

January 6, 2006

Anastasia Duarte-Wilkinson
Tesoro Refining and Marketing Company
3450 South 344th Way, Suite 201
Auburn, WA 98001-5931

1850904.050201/14.1

**RE: Corrective Action Work Plan for 2006
Former Unocal #5785 (Mike's Airport Express),
9190 Glacier Highway, Juneau, Alaska
ADEC UST Facility #816; ADEC Reckey #97110023701**

Dear Ms. Duarte-Wilkinson:

This letter presents the 2006 (calendar year) Corrective Action Work Plan for the investigation and/or remediation of contamination at the above referenced site. This 2006 Corrective Action Work Plan was presented at the annual Alaska Department of Environmental Conservation (ADEC)/Tesoro Alaska Company (Tesoro) work session on November 15, 2005, at the Anchorage office of MWH.

This letter also provides a summary of the tasks that were completed under the ADEC-approved 2005 Corrective Action Work Plan in the following section. A site plan and historical data tables presented during the November 2005 annual work session are attached.

Work Plan Tasks for 2005

- Task 1 – Ground Water Monitoring
Ground water monitoring has been completed for 2005.
- Task 2 – Remediation System Operation and Maintenance
The operation of the soil vapor extraction (SVE) system was checked on a quarterly basis (including measurement of vacuum, flow, and SVE exhaust), and maintenance provided as needed. A SVE exhaust vapor sample was collected and analyzed on a quarterly basis.

The following section presents the proposed tasks for the 2006 Corrective Action Work Plan. The scope of these tasks is based on the results and findings of the monitoring and remediation completed to date at this site.

Work Plan Tasks for 2006

- Task 1 – Ground Water Monitoring
Sampling locations and analyses are shown on the 2006 Work Plan Schedule below.
- Task 2 – Remediation System Operation and Maintenance

The operation of the SVE system will be checked on a quarterly basis (including measurement of vacuum and flow, and SVE exhaust with a photoionization detector), and maintenance provided as needed. A SVE exhaust vapor sample may be collected on a quarterly basis and analyzed for the compounds listed in the schedule below, based upon field screening results.

2006 Work Plan Schedule

	Work Plan Task	1st Quarter	2nd Quarter	3rd Quarter	4th Quarter
Task 1	G-1, G-4, G-9, G-11, G-13, G-14, and G-16		B, G, I		B, G, I
Task 2	Remediation System O&M		V		V

Key:

AK – Alaska Test Method

B – Benzene, toluene, ethylbenzene, and total xylenes by EPA Method 8021B

EPA – U.S. Environmental Protection Agency

G – Gasoline range organics by AK101

I – Indicators, parameters tested include: dissolved oxygen, ferrous iron, oxygen-reduction potential, pH, and temperature

O&M – operation and maintenance

V – Soil vapor extraction system vapors by EPA Methods 8020/8015M

The Corrective Action Work Plan activities for the year 2006 will be completed by MWH on behalf of Tesoro. Ground water monitoring will be conducted to track migration and trends of contaminants that are present. All sampling activities will be completed in accordance with ADEC's *Underground Storage Tanks Procedures Manual – Standard Sampling Procedures* (November 7, 2002). The methods that will be used for conducting a monitoring event, unless otherwise noted in the monitoring report, will include:

- The static water levels in the monitoring wells will be measured with respect to the top of each well casing. The elevation of the static water level will be based on an arbitrary datum established during a vertical control survey completed by MWH.
- The monitoring wells will not be purged prior to sampling. A new, disposable, Teflon[®] bailer will be used to sample each well. The first bail of water removed from each well will be examined for petroleum odor, sheen, and any other unique physical features.
- Water and vapor samples will be collected in laboratory-supplied sample containers. The samples will be delivered to an ADEC-approved laboratory in accordance with standard chain-of-custody procedures.
- Vapors will be measured with a calibrated photoionization detector.
- Additional water samples will be collected from the monitoring wells and tested in the field for chemical and physical parameters.

If you have any questions or need additional information concerning this 2006 Corrective Action Work Plan, please contact me at (907) 248-8883.

Sincerely,

Michael A. Zidek, PMP
Environmental Scientist

MAZ/klr

Attachments: Site Plans
Graphs of Contaminant Concentrations and Ground Water Elevations
Historical Data Tables

FILE: \\usmact01\server\cad\proj\Tesoro\Juneau\5785\MonEvent\Oct2005\Final\Fig01.dgn
 TIME: 30-DEC-2005 10:24
 JOB NO.: 1850904.050201

G-1	
BENZENE	0.0313
GRO	0.555
GW ELEV.	90.17

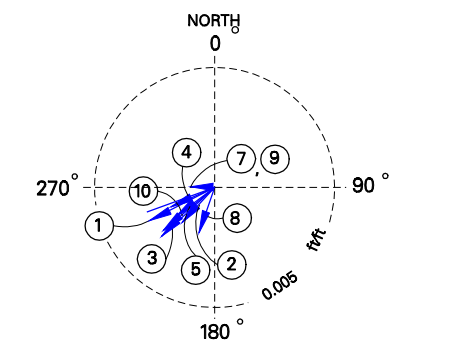
G-11	
BENZENE	U (0.0005)
GRO	U (0.05)
GW ELEV.	90.34

G-9	
BENZENE	U (0.0005)
GRO	U (0.05)
GW ELEV.	90.21

G-13	
BENZENE	U (0.0005)
GRO	U (0.05)
GW ELEV.	89.82

G-14	
BENZENE	U (0.0005)
GRO	U (0.05)
GW ELEV.	90.04

G-16	
BENZENE	U (0.0005)
GRO	U (0.05)
GW ELEV.	NM



GROUND WATER FLOW SUMMARY

DATE	BEARING	GRADIENT (ft/ft)
① MAR. 12, 2002	243°	0.003
② JUNE 27, 2002	223°	0.002
③ NOV. 12, 2002	230°	0.0028
④ JUNE 4, 2003	246°	0.002
⑤ OCT. 29, 2003	237°	0.0021
⑥ FEB. 18, 2004	NC	NC
⑦ JUNE 28, 2004	272°	0.0011
⑧ NOV. 22, 2004	199°	0.0027
⑨ JUNE 21, 2005	272°	0.001
⑩ OCT. 27, 2005	256°	0.0035

NOTES:

- RESULTS SHOWN ARE FOR WELLS SAMPLED ON OCTOBER 27, 2005.
- RESULTS ARE IN MILLIGRAMS PER LITER (mg/L)
- BOLD /RED TEXT INDICATES CONTAMINANT CONCENTRATIONS ABOVE CLEANUP LEVELS FOR THIS SITE

LEGEND:

- — — — — PROPERTY LINE
- ▲ MONITORING WELL LOCATION
- DRO DIESEL RANGE ORGANICS
- GRO GASOLINE RANGE ORGANICS
- GW ELEV GROUND WATER ELEVATION IN FEET
- NC NOT CALCULATED
- NM NOT MEASURED
- U UNDETECTED ABOVE THE VALUES SHOWN IN PARENTHESES

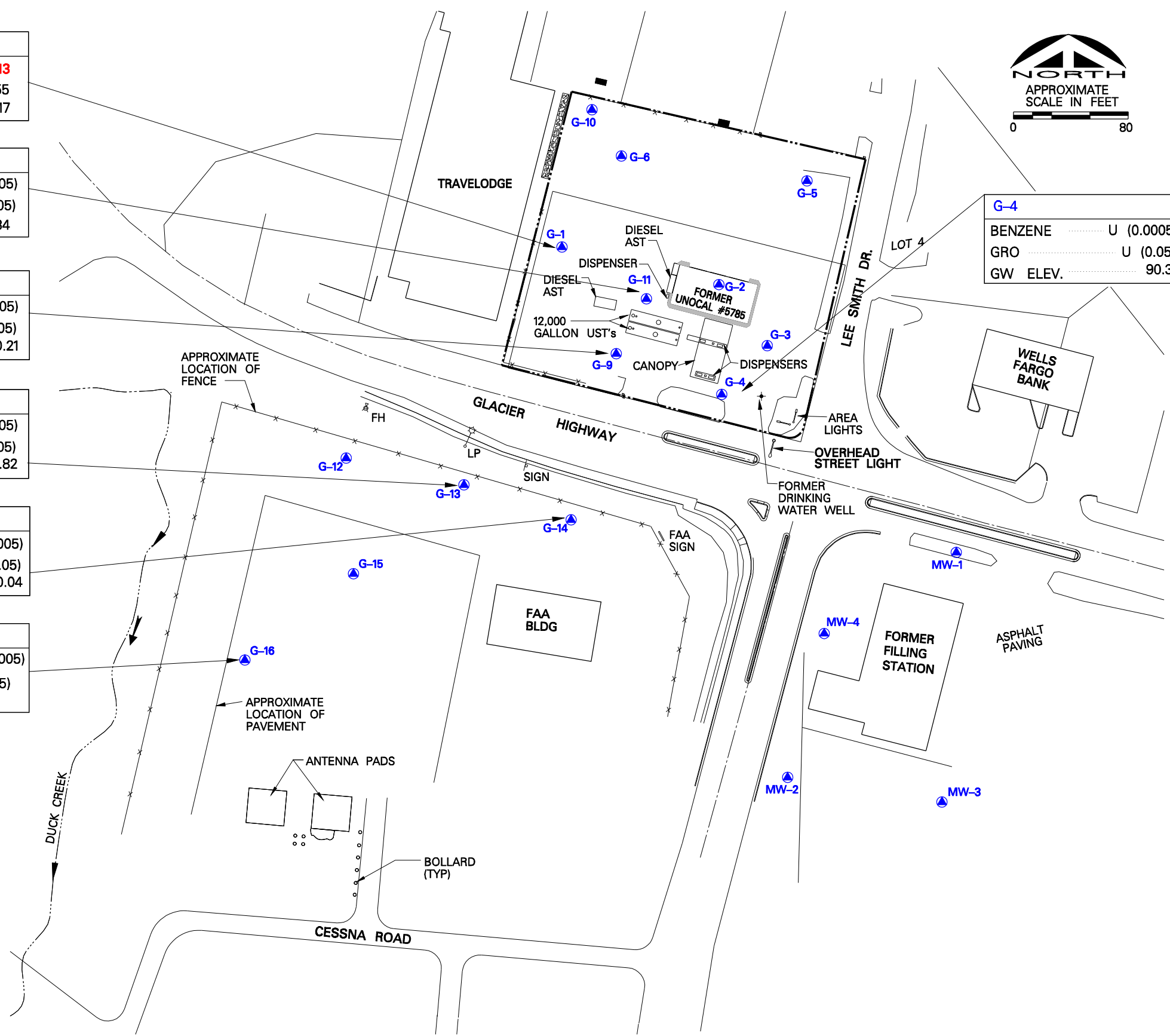
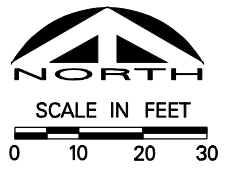


FIGURE 1

TESORO ALASKA COMPANY – FORMER UNOCAL #5785 JUNEAU
 OCTOBER 2005 MONITORING EVENT REPORT
SITE PLAN WITH GROUND WATER ANALYTICAL RESULTS



FILE: \\usancs01\server\Cad\Proj\Tesoro\Juneau\5785\MonEvent\Oct2005\final\Fig02.dgn
 TIME: 30-DEC-2005 10:25
 JOB NO.: 1850904.050201



LEGEND	
---	PROPERTY LINE
▲	MONITORING WELL
●	SOIL VAPOR EXTRACTION WELL
---	SOIL VAPOR EXTRACTION LINE
---	2" DIA. PVC SOLID PIPE
○	AST ABOVEGROUND STORAGE TANK
○	UST UNDERGROUND STORAGE TANK
---	PROPOSED TRENCH
▲	AIR SPARGE WELL

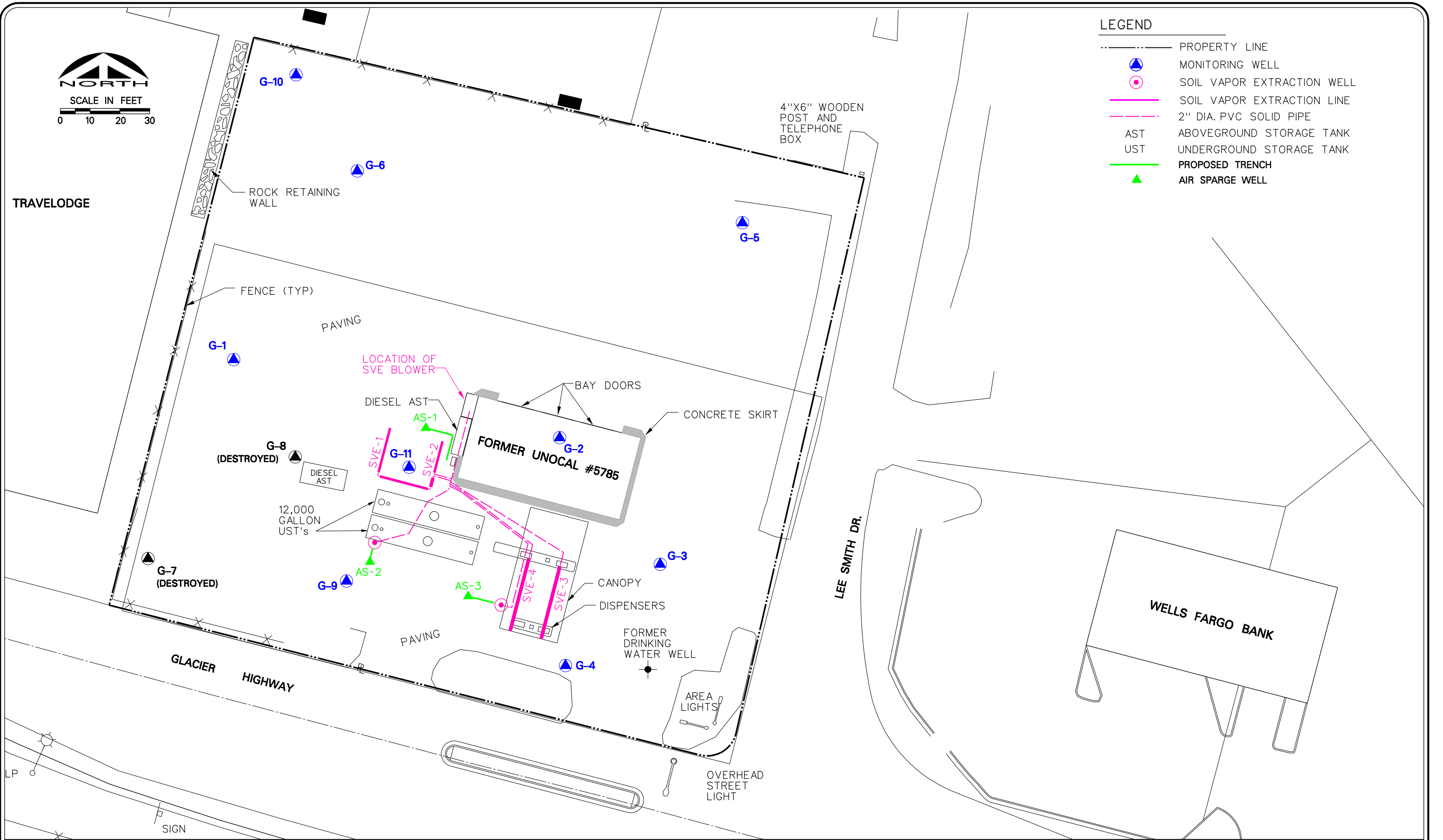


FIGURE 2
 TESORO ALASKA COMPANY – FORMER UNOCAL #5785 JUNEAU
 OCTOBER 2005 MONITORING EVENT REPORT
REMEDIATION SYSTEM LAYOUT

Figure 3
Graphs of Contaminant Concentrations and Ground Water Elevations

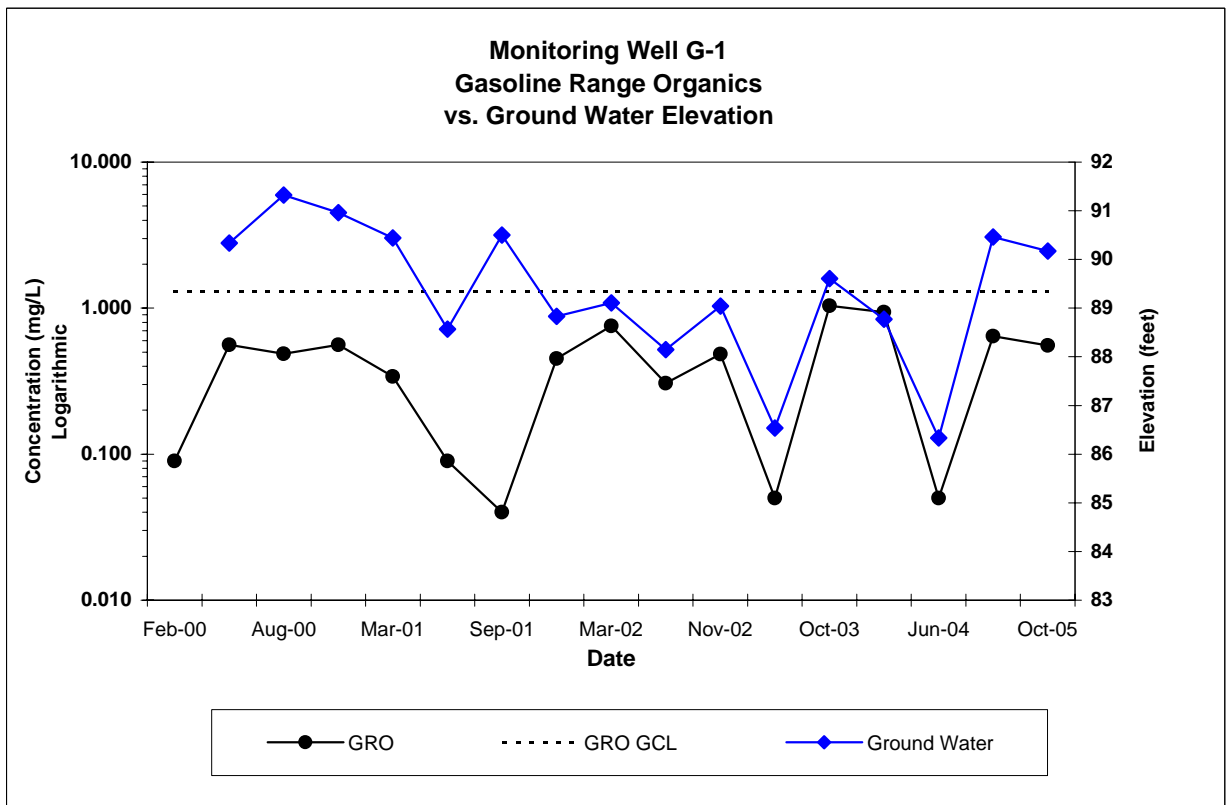
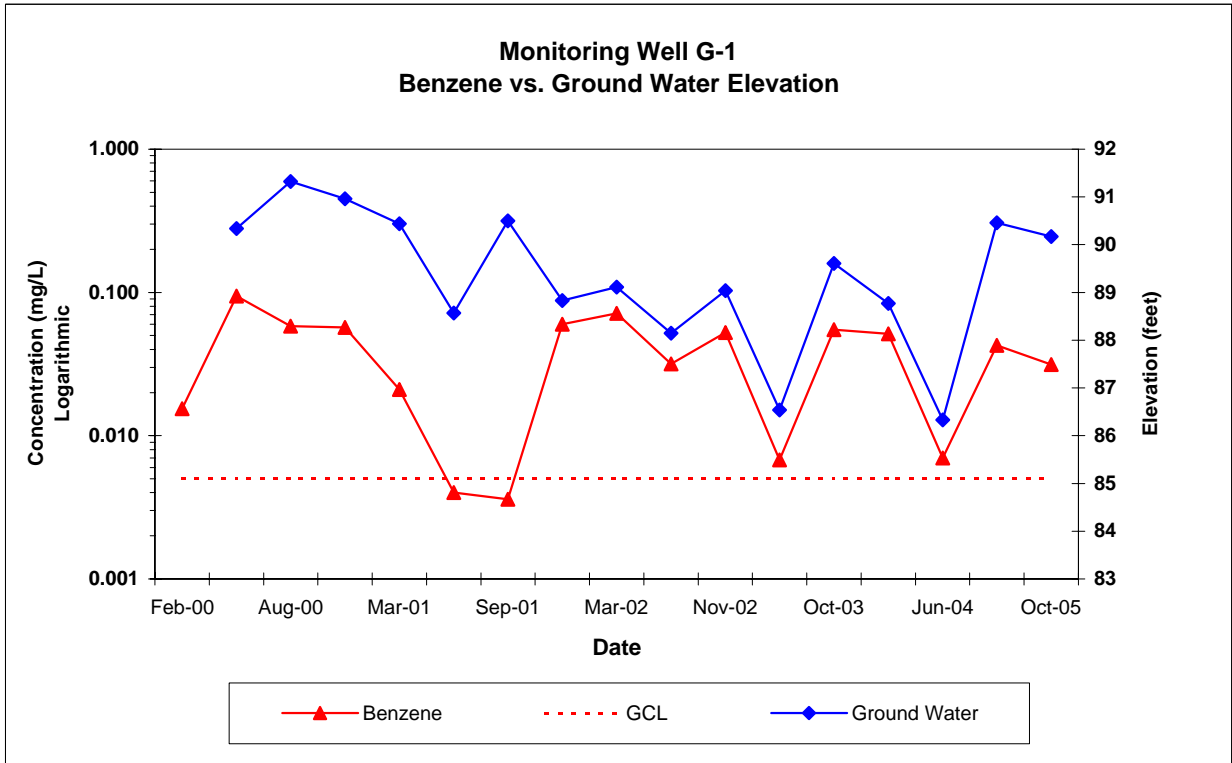


Figure 3
Graphs of Contaminant Concentrations and Ground Water Elevations

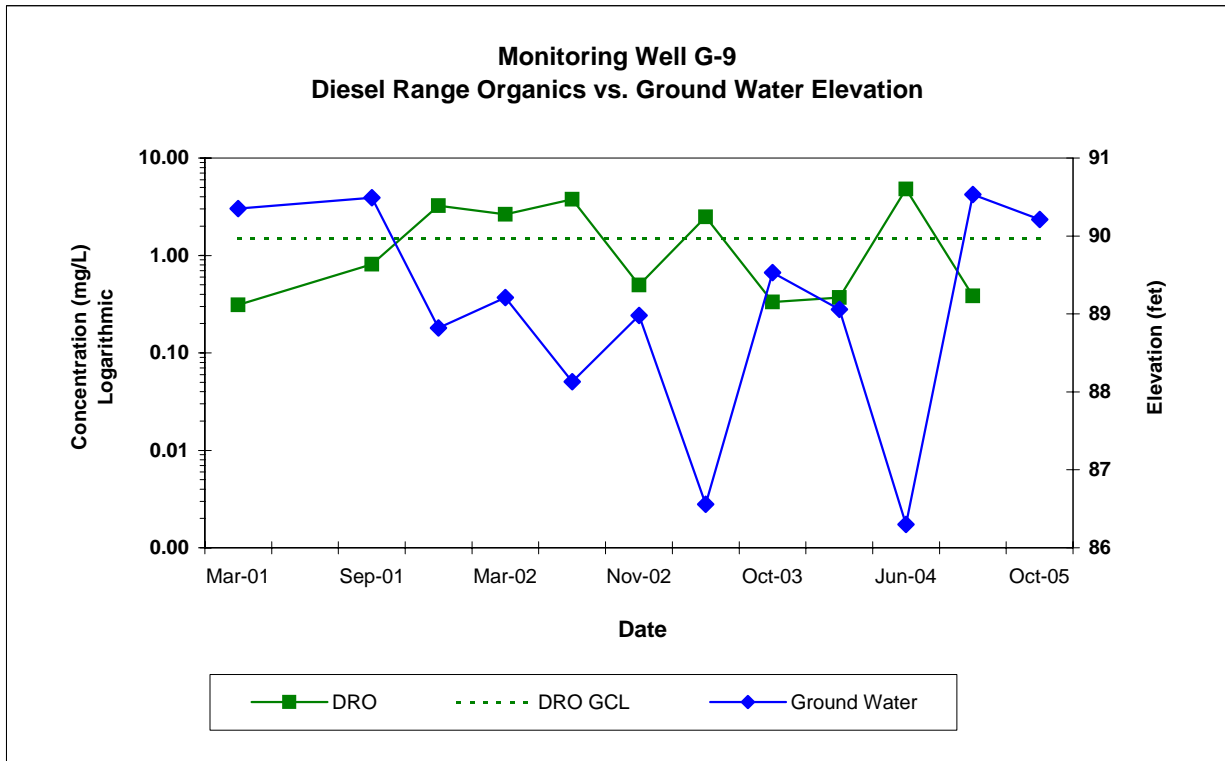
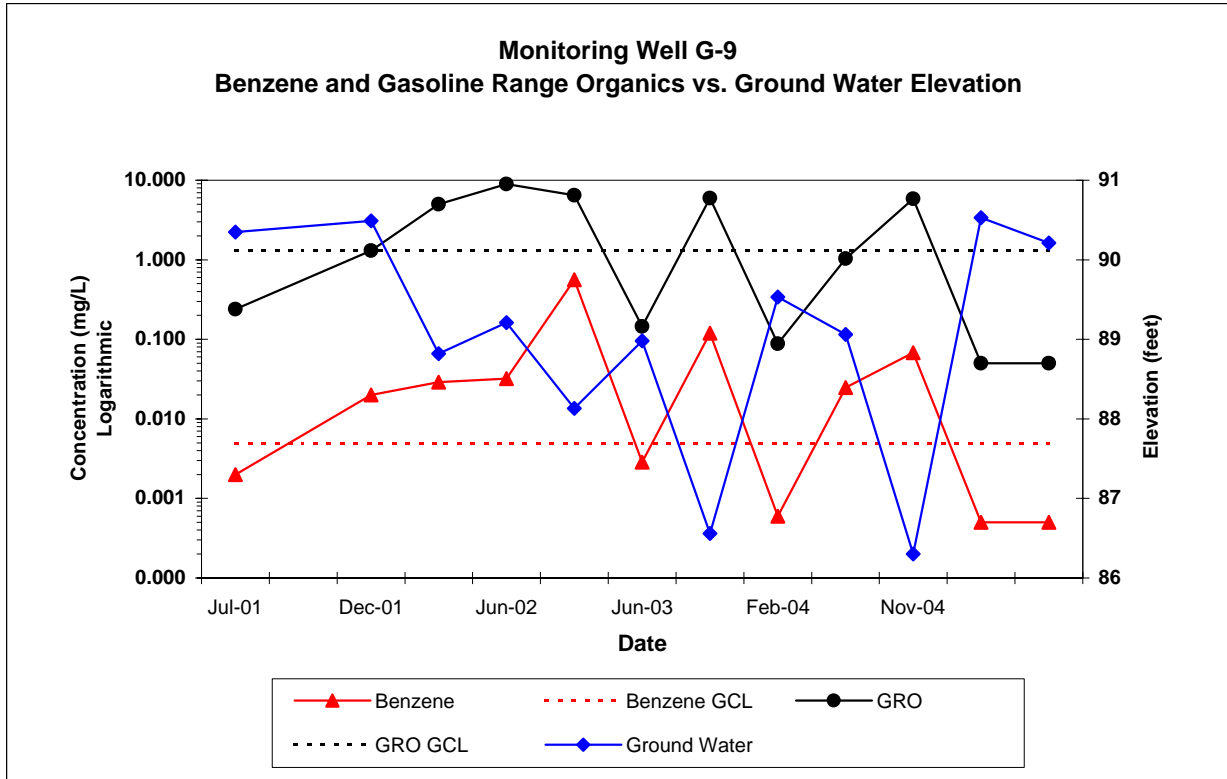


Figure 3
Graphs of Contaminant Concentrations and Ground Water Elevations

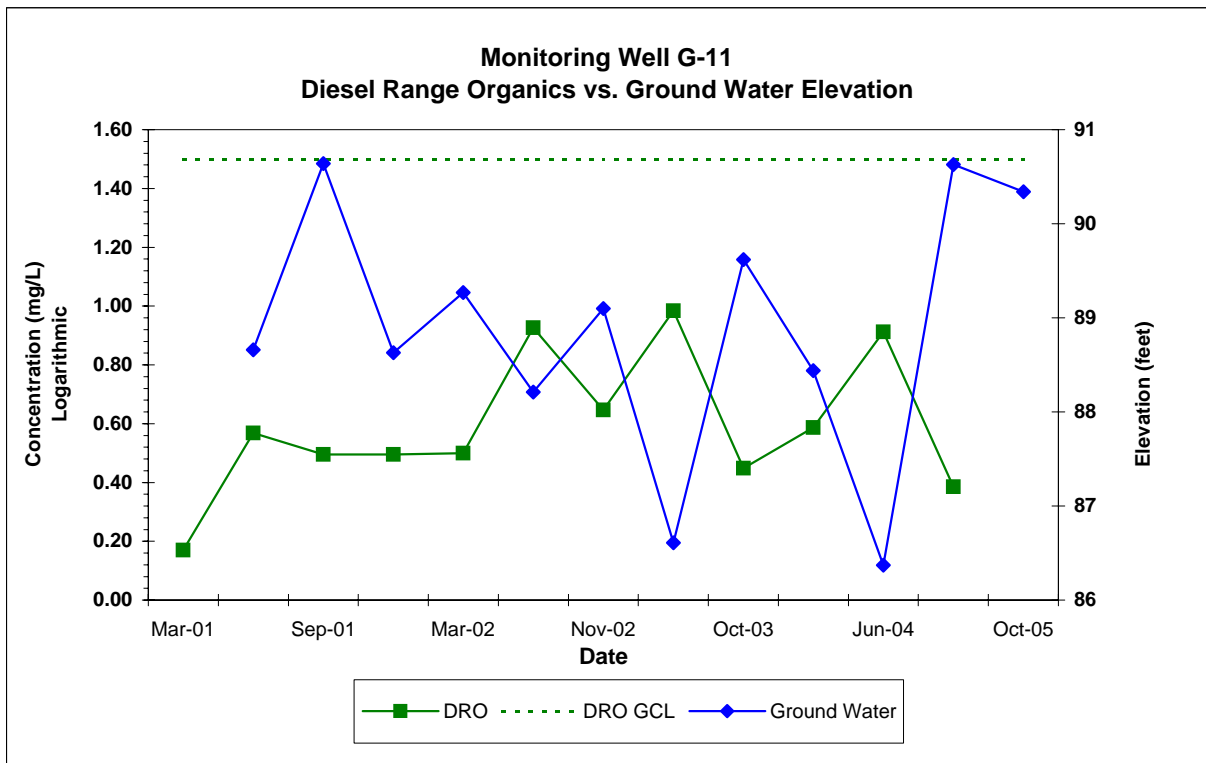
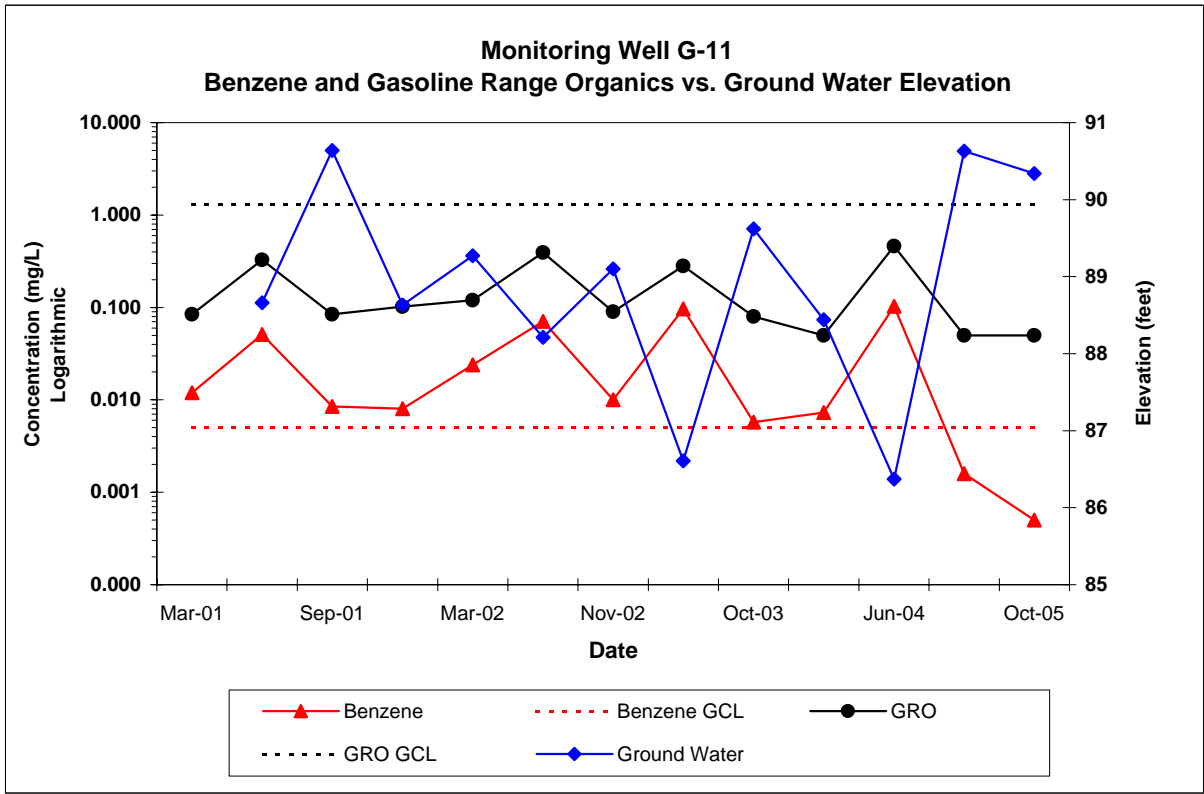


Figure 3
Graphs of Contaminant Concentrations and Ground Water Elevations

