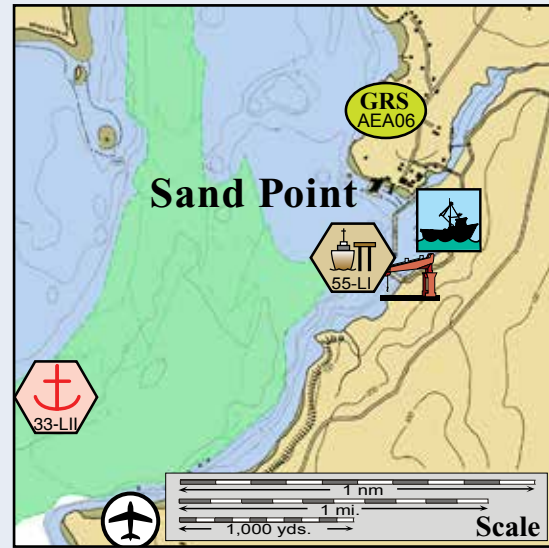
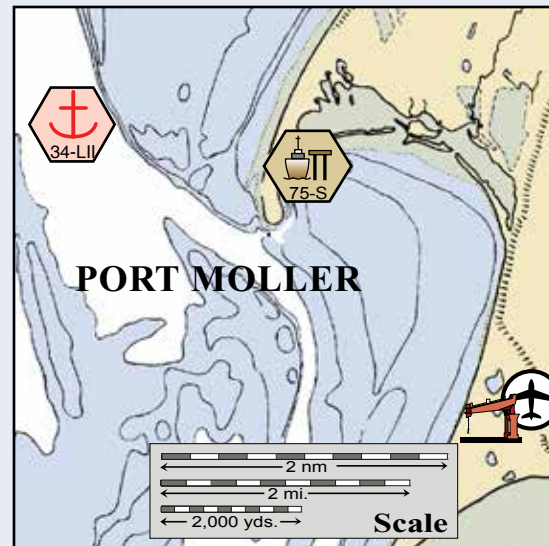


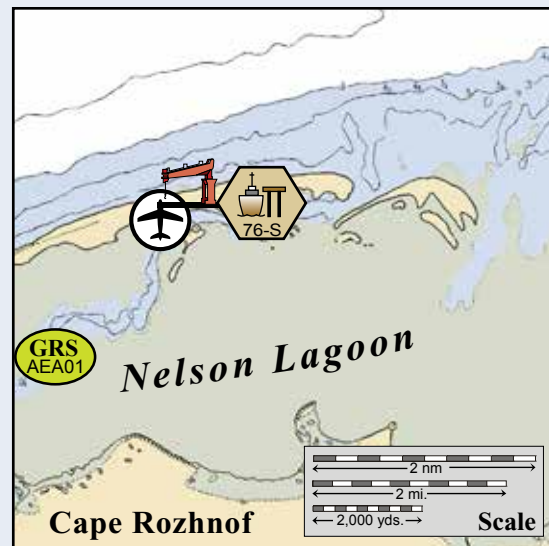
Stepovak Bay.



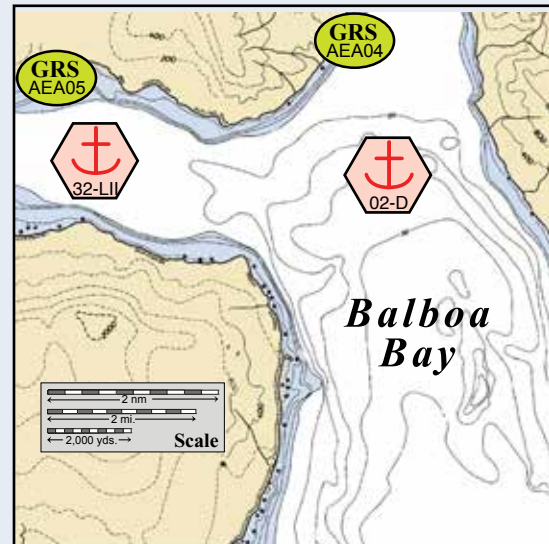
Sand Point.



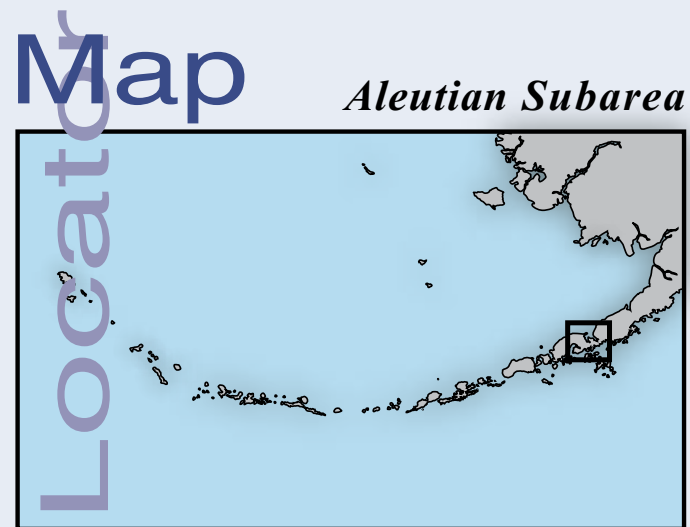
Port Moller.



Nelson Lagoon.



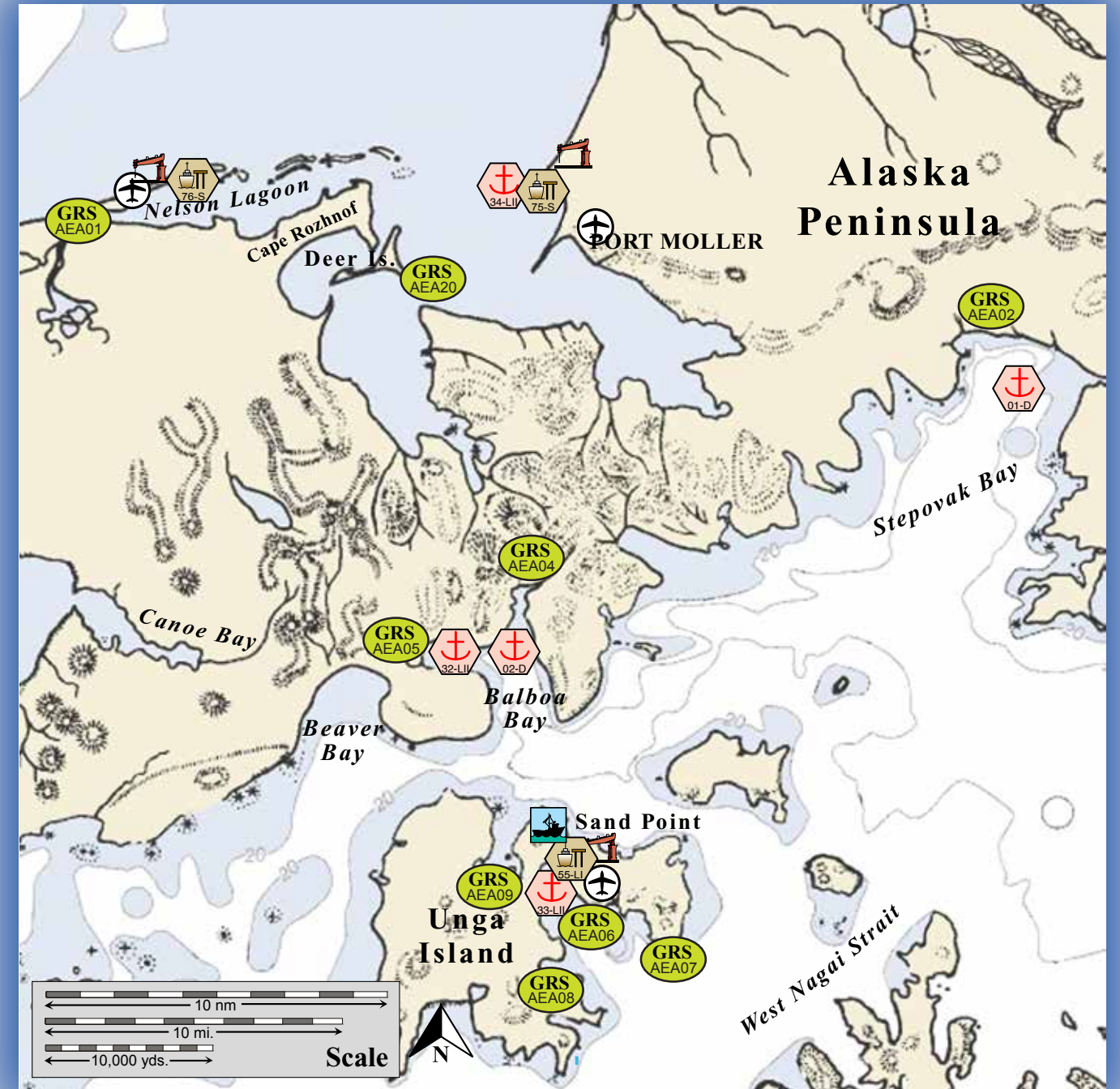
Balboa Bay.



Locator Map

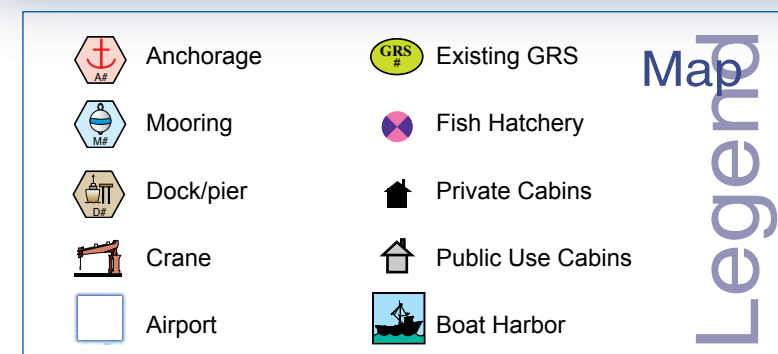
Aleutian Subarea

Center of map at 55° 37.41' N Lat., 160° 33.73' W Lon.



This is not intended for navigational use.

Soundings in fathoms



Map Legend

# Aleutian PPOR Map 01

Site Considerations for PPOR Map 01 of the Aleutian Subarea								
	Stepovak Bay	Balboa Bay	Lefthand Bay-Balboa Bay	Popof Strait-Sand Point	Entrance Point Anchorage	Sand Point Dock	Port Moller-Cannery Dock	Nelson Lagoon
ID Number	01-D	02-D	32-LII	33-LII	34-LII	55-LI	75-S	76-S
<b>Human Health &amp; Safety</b>								
Communities – distances-nm	Sand Point-42	Sand Point-15	Sand Point-16	Sand Point-0.5	Nelson Lagoon-19	Sand Point-0.0	Nelson Lagoon-20	Nelson Lagoon-0.0
<b>Natural Resource Considerations</b>								
Fish & Wildlife	Spawning salmon, seals, sea otters, waterfowl concentrations, seabird and eagle nesting				Spawning salmon, seals, sea otters walrus, seabird & eagle nesting, waterfowl & shorebird concentration	Spawning salmon, seals, sea otters, waterfowl concentrations, seabird and eagle nesting	Spawning salmon, seals, sea otters walrus, seabird & eagle nesting, waterfowl & shorebird concentration	
Threatened & Endangered Species	Steller's Eider and sea otters are present							
Sensitive Areas	Not Designated			Designated as a Most Environmentally Sensitive Area (MESA 25b- ADFG)				
Invasive Species-Rats	Area is free of rats							
<b>Other Stakeholder Considerations</b>								
Fisheries	Groundfish, herring, salmon, crab				Salmon	Groundfish, herring, salmon, crab	Salmon	
Historic Properties	If suspected cultural artifacts are encountered, notify the State Historic Preservation Office and the land managers. Review adjacent GRS (if applicable) for information on historic properties.							
Mariculture	None							
Subsistence	Salmon, marine mammals				Salmon, marine mammals	Salmon, marine mammals, intertidal		
Tourism/Recreation	Minimal recreational use				Local recreational use			
Waterfront Public Facilities/Parks	Alaska Peninsula National Wildlife Refuge-no facilities			Alaska Maritime National Wildlife Refuge, Small Boat Harbor, boat launch	Port Moller Critical Habitat Area	Alaska Maritime National Wildlife Refuge, Small Boat Harbor, boat launch	Port Moller Critical Habitat Area	
Waterfront Private Facilities	None			Cannery cranes and dock				
<b>Response and Salvage Resource Considerations</b>								
Ability to Boom Vessel	No			Weather dependent				Yes
Emergency Tow System	An emergency tow system is available to assist disabled vessels in Unalaska and Aleutian Subarea. Contact the USCG MSD-Unalaska-907.581.3466 and the Unalaska Harbor Master 907.581.1254 for additional information.							
Geographic Response Strategies	GRS AEA-02 Stepovak Bay	GRS AEA-04 & GRS AEA-05 Balboa Bay		GRS AEA-06 Sand Point		GRS AEA-20 Point Moller	GRS AEA-01 Nelson Lagoon	
Closest Alternative Places of Refuge (same sized vessel)	42 nm. to 02-D Balboa Bay	42 nm. to 01-D Stepovak Bay	15 nm. to 33-LII Popof Strait	15nm. to 32-LII Lefthand Bay	145 nm. to 05-D Slime Bank	2nm. to 32-LII Popof Strait	19nm to 76-S Nelson Lagoon	19nm. to 75-S Port Moller

Site ID Number and Vessel Class Classification
D = A deep draft vessel that exceeds 20,000 Gross Tons, has drafts of 25-60 ft. and ranges from 450 ft.-1000 ft. LOA, typical of Tankers/ Cruiseships
LII= A light draft vessel of 10,000 to 19,999 Gross Tons, has drafts up to 25 ft., LOA up to 450 ft., typical of Ferrys/Trampers
LI= A light draft vessel of 300 to 9,999 Gross Tons, has drafts up to 25 ft., LOA up to 450 ft., typical of Ferrys/ Trampers
S = A shallow draft vessel less than 300 Gross Tons, has a draft less than 15 ft., LOA less than 200 ft., typical of Excursion/Fishing vessels

Stakeholders for PPOR Map 01 of the Aleutian Subarea	
Year-2007	Contact
Aleutians East Borough	Mayor
Alaska Dept of Fish & Game	Resource Manager
Alaska Department of Natural Resources	Natural Resource Manager
Alaska Peninsula National Wildlife Refuge	Dept of the Interior- Regional Environmental Officer
Alaska Maritime National Wildlife Refuge	Dept of the Interior- Regional Environmental Officer
Aleut Marine Mammal Commission	Director
City of Sand Point	Mayor
Bristol Bay Native Corporation	President
Native Allotments	Dept of the Interior- Regional Environmental Officer
Shumagin Corporation	President

Physical and Operational Characteristics for PPOR Map 01 of the Aleutian Subarea									
	Stepovak Bay	Balboa Bay	Lefthand Bay-Balboa Bay	Popof Strait-Sand Point	Entrance Point Anchorage	Sand Point Dock	Port Moller-Cannery Dock	Nelson Lagoon	
ID Number	01-D	02-D	32-LII	33-LII	34-LII	55-LI	75-S	76-S	
Location	55°47.57'N 159°45.26'W	55°32.08'N 160°36.75'W	55°32.37'N 160°42.80'W	55°18.77'N 160°32.88'W	55°59.42'N 160°37.52'W	55°19.93'N 160°30.06'W	55°59.28'N 160°34.50'W	56°00.23'N 161°09.49'W	
Maximum Vessel Size	Deep draft, greater than 20,000 Gross Tons		Light draft-II, 10,000 to 20,000 Gross Tons				Light draft-I, 300 to 9,999 Gross Tons	Shallow draft, 300 Gross Tons and less	
Type of Berthing	Anchorage								Dock
Contact	N/A						Harbormaster-907.383.2331	Plant Manager-907.375.2702	Native Village President-907.989.2204
Navigational Approach	Approach from SW	Approach from S	Approach from SE	Approach from the S or N	Approach from the N	Approach from the NW	Approach from the S	Approach from the SE	
Minimum Water Depth	18 Fathoms in swing area	21 Fathoms in swing area	13 Fathoms in swing area	18 Fathoms in the swing area	48 Feet in the swing area	32 Feet at the dock face	6 Feet at the dock face	12 Feet at the dock face	
Maximum Water Depth	37 Fathoms in swing area	38 Fathoms in swing area	33 Fathoms in the swing area	27 Fathoms in the swing area	11 Fathoms in the swing area	45 Feet on approach	12 Feet at the dock face	9 Feet on approach	
Maximum Vessel Draft	60 ft.		50 ft.		40 ft.	30 ft.	6 ft. tidal dependent approach	10 ft. tidal dependent approach	
Swing Room/Dock Face	6000 ft.		3000 ft.		2300 ft.	350 ft.	300 ft.	200 ft.	
Bottom Type	Mud/Sand	Mud/Shells		Sand-sticky	Sand	N/A			
Docks/Piers	Nearest Alt. Dock 06-D Dutch Harbor APL Dock			Nearest Alt. Dock- 35-LII Cold Bay Dock			Nearest Alt. Dock 75-S Nelson Lagoon	Nearest Alt. Dock 76-S Port Moller Cannery	
Moorings	Nearest Mooring - Wide Bay 06-D								
Anchorage	Nearest Alt. Anchorage-02-D Balboa Bay	Nearest Alt. Anchorage-01-D Stepovak Bay	Nearest Alt. Anchorage- 33-LII Popof Strait	Nearest Anchorage-32-LII Lefthand Bay	Nearest Anchorage-36-LII Volcano Bay	Nearest Alt. Anchorage- 33-LII Popof Strait	Nearest Alt. Anchorage- 34-LII Entrance Pt.		
Prevailing Winds	Winter-Northerly, Southeasterly Summer-Westerly, Southwesterly								
Currents	Alaska Coastal Current runs west offshore at 1 kt. Local currents are light and tidally influenced.				Tidal Currents 1-2 kts.	Alaska Coastal Current runs west offshore at 1 kt. Local currents are light and tidally influenced.	Tidal Currents 1-2 kts.		
Tides	Mean High Water- 6.8 (Higher- 7.6) , Mean Low Water- 1.3 (Lower- -3.5)	Mean High Water- 7.6 (Higher- 8.9) , Mean Low Water- 1.4 (Lower- -3.5)		Mean High Water- 6.6 (Higher- 7.8) , Mean Low Water- 1.2 (Lower- -3.5)	Mean High Water- 10 (Higher- 10.8) , Mean Low Water- 2.4 (Lower- -4.0)	Mean High Water- 6.6 (Higher- 7.8) , Mean Low Water- 1.2 (Lower- -3.5)	Mean High Water- 10 (Higher- 10.8) , Mean Low Water- 2.4 (Lower- -4.0)		
Sea Conditions	Exposed to seas from the SW	Exposed to seas from the S	Exposed to seas from the W	Exposed to seas from the SE-S	Exposed to seas from NW-NE	Exposed to seas from the SW	Exposed to seas from the SE	Protected	
Shelter from Severe Storms	Sheltered W-SE	Sheltered SW-SE	Exposed to strong W winds	Sheltered W-E	Minimal protection	Sheltered W-E, Winds from the south may be strong	Sheltered W-E	Protected	
Fog	Fog can occur during all seasons								
Sea ice	Sea ice maybe present December-March								

NOTE: Sensitive resource information can be found on other maps which can be accessed through the sensitive area section of the Aleutian Subarea Contingency Plan: <http://www.akrrt.org/AIPlan/aitoc.shtml>