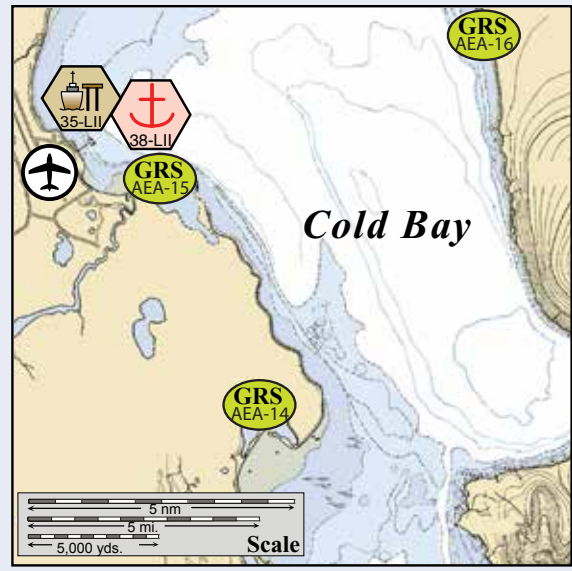
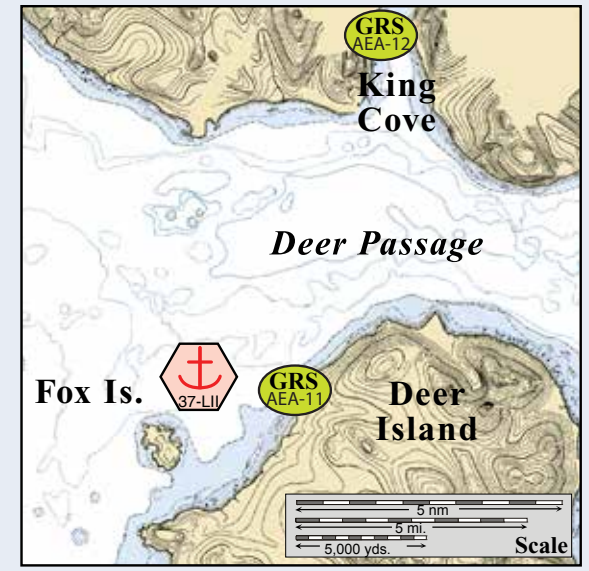


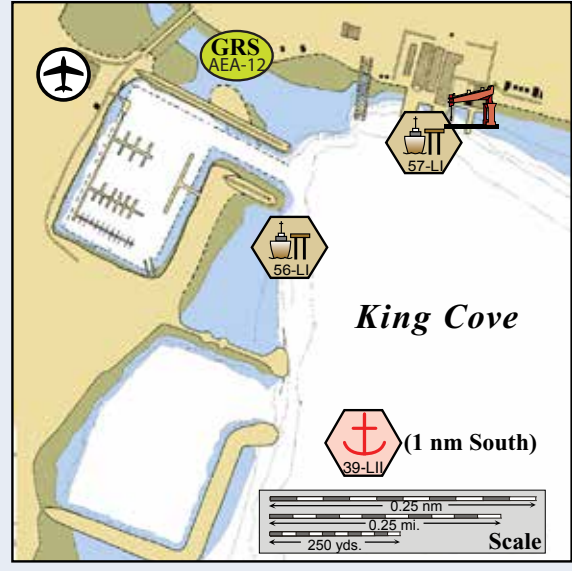
Center of map at 54° 11.10' N Lat., 162° 59.63' W Lon.



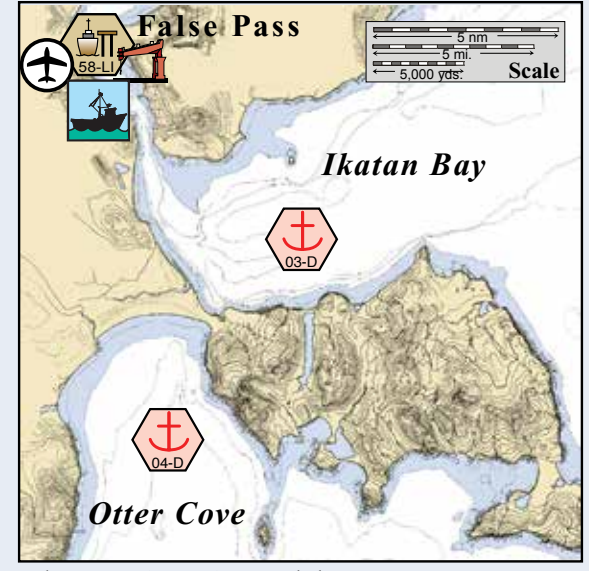
Cold Bay.



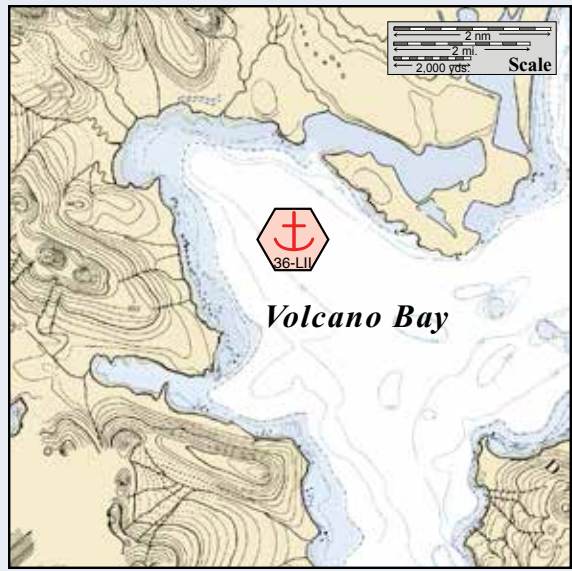
Fox Island.



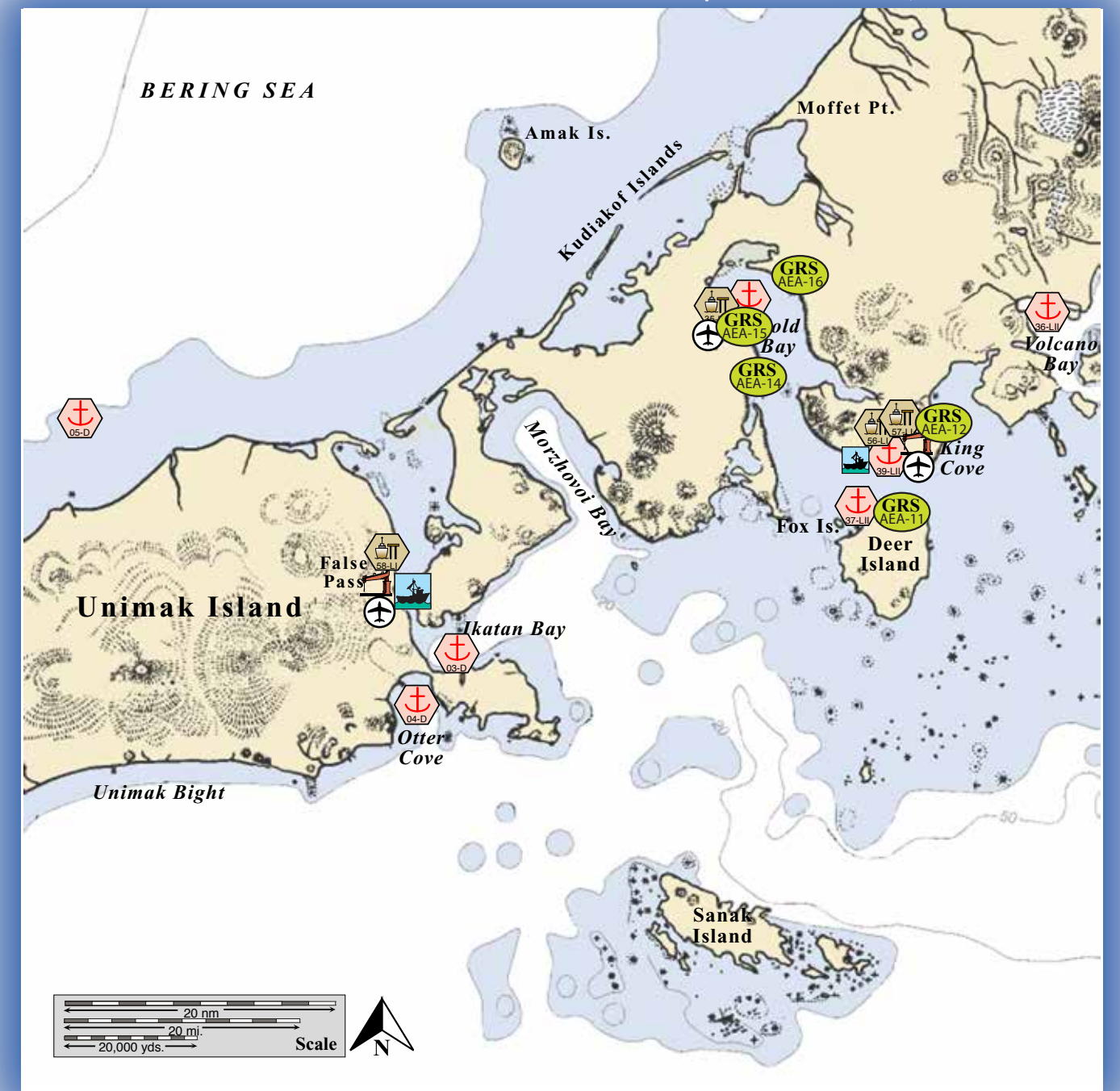
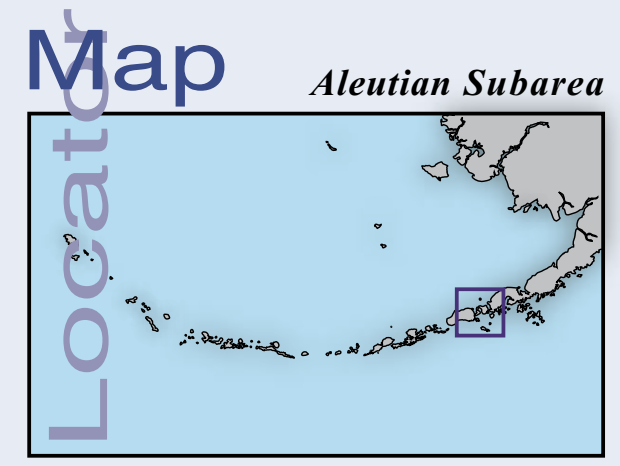
King Cove.



False Pass, Otter Cove and Iktan Bay.



Volcano Bay.



This is not intended for navigational use.

Soundings in fathoms

	Anchorage		Existing GRS
	Mooring		Fish Hatchery
	Dock/pier		Private Cabins
	Crane		Public Use Cabins
	Airport		Boat Harbor

Potential Places of Refuge for Aleutians Subarea

Aleutian PPOR Map 02

Site Considerations for PPOR Map 02 of the Aleutian Subarea												
	Ikatan Bay	Otter Cove	Slime Bank/Urilia Bay Anchorage	Cold Bay Dock	Volcano Bay	Fox Island Anchorage	Cold Bay Anchorage	King Cove Anchorage	King Cove City Dock	King Cove Cannery	False Pass Ferry Dock	
ID Number	03-D	04-D	05-D	35-LII	36-LII	37-LII	38-LII	39-LII	56-LI	57-LI	58-LI	
Human Health & Safety												
Communities – distances-nm	False Pass-8	False Pass-34	False Pass-44	Cold Bay- 0.0	King Cove- 20	King Cove- 7.5	Cold Bay- 1	King Cove- 0.5	King Cove-0.0	King Cove-0.0	False Pass-0.0	
Natural Resource Considerations												
Fish & Wildlife	Spawning salmon, seals, sea otters waterfowl concentrations, seabird and eagle nesting	Spawning salmon, seals, sea otters, sea lions, seabird & eagle nesting, waterfowl concentration	Spawning salmon, waterfowl concentration, sea otters, sea lions	Spawning salmon, waterfowl concentration, sea otters, sea lions, seals, shorebird concentrations, intertidal	Spawning salmon, seals, sea otters seabird & eagle nesting, waterfowl concentration	Spawning salmon, seals, sea otters, waterfowl concentrations, seabird and eagle nesting	Spawning salmon, waterfowl concentration, sea otters, sea lions, seals, shorebird concentrations, intertidal	Spawning Salmon, seabird nesting		Spawning salmon, seals, sea otters, waterfowl concentrations, seabird and eagle nesting		
Threatened & Endangered Species	Steller's Eider and sea otter are present	Steller's Eider, Steller's Sea Lions and sea otters are present	Steller's Eider and sea otters are present									
Sensitive Areas	Not Designated			Designated as a Most Environmentally Sensitive Area (MESA 26a,b ADFG)	Not Designated	Designated as a Most Environmentally Sensitive Area (MESA 35 ADFG)	Designated as a Most Environmentally Sensitive Area (MESA 26a,b ADFG)	Designated as Highly Sensitive		Designated as Highly Sensitive		
Invasive Species-Rats	These areas are rat-free											
Other Stakeholder Considerations												
Fisheries	Groundfish, herring, salmon, crab											
Historic Properties	If suspected cultural artifacts are encountered, notify the State Historic Preservation Office and the land managers. Review adjacent GRS (if applicable) for information on historic properties.											
Mariculture	None											
Subsistence	Salmon, marine mammals, waterfowl			Salmon, marine mammals, intertidal, waterfowl					Salmon, marine mammals, waterfowl			
Tourism/Recreation	Local recreational use		None	Local recreational use								
Waterfront Public Facilities/Parks	Alaska Maritime National Wildlife Refuge-no facilities available			Izembek National Wildlife Refuge, boat launch	Alaska Maritime National Wildlife Refuge and Alaska Peninsula National Wildlife Refuge-no facilities available		Izembek National Wildlife Refuge	King Cove Small Boat Harbor and Alaska Peninsula National Wildlife Refuge-no facilities available		Alaska Peninsula National Wildlife Refuge-no facilities available, Ferry Dock has a small crane		
Waterfront Private Facilities	None			Dock crane	None		Dock crane	Cannery cranes and dock		Old cannery Dock is present but unmaintained		
Response and Salvage Resource Considerations												
Ability to Boom Vessel	Weather dependent											
Emergency Tow System	An emergency tow system is available to assist disabled vessels in Unalaska and Aleutian Subarea. Contact the USCG MSD-Unalaska-907.581.3466 and the Unalaska Harbor Master 907.581.1254 for additional information.											
Geographic Response Strategies	None			GRS AEA-14, 15, 16	None	GRS AEA-11 Deer Island	GRS AEA-14, 15, 16	GRS AEA-12 King Cove		None		
Closest Alternative Places of Refuge (same sized vessel)	26 nm. to 04-D Otter Cove	26 nm. to 03-D Ikatan Bay	105 nm. to 06-D Wide Bay	1 nm. to 38-LII Cold Bay Anchorage	20 nm. to 39-LII King Cove Anchorage	5 nm. to 39-LII King Cove Anchorage	1 nm. to 35-LII Cold Bay Dock	5 nm. to 37-LII Fox Island Anchorage	1 nm. to 57-LI King Cove Cannery	1 nm. to 56-LI King Cove City Dock	7nm. to 03-D Ikatan Bay	

Site ID Number and Vessel Class Classification

D = A deep draft vessel that exceeds 20,000 Gross Tons, has drafts of 25-60 ft. and ranges from 450 ft.-1000 ft. LOA, typical of Tankers/ Cruiseships

LII= A light draft vessel of 10,000 to 19,999 Gross Tons, has drafts up to 25 ft., LOA up to 450 ft., typical of Ferrys/Trampers

LI= A light draft vessel of 300 to 9,999 Gross Tons, has drafts up to 25 ft., LOA up to 450 ft., typical of Ferrys/ Trampers

S = A shallow draft vessel less than 300 Gross Tons, has a draft less than 15 ft., LOA less than 200 ft., typical of Excursion/Fishing vessels

Stakeholders for PPOR Map 02 of the Aleutian Subarea	
Year-2007	Contact
Aleut Corporation	President
Aleutians East Borough	Mayor
Alaska Dept of Fish & Game	Resource Manager
Alaska Department of Natural Resources	Natural Resource Manager
Alaska Maritime National Wildlife Refuge	Dept of the Interior-Regional Environmental Officer
Alaska Peninsula National Wildlife Refuge	Dept of the Interior-Regional Environmental Officer
Aleut Marine Mammal Commission	Director
City of Cold Bay	Mayor
City of False Pass	Mayor
City of King Cove	City Manager
Izembek National Wildlife Refuge	Dept of the Interior-Regional Environmental Officer
Native Allotments	Dept of the Interior-Regional Environmental Officer

Physical and Operational Characteristics for PPOR Map 02 of the Aleutian Subarea												
	Ikatan Bay	Otter Cove	Slime Bank/Urilia Bay Anchorage	Cold Bay Dock	Volcano Bay	Fox Island Anchorage	Cold Bay Anchorage	King Cove Anchorage	King Cove City Dock	King Cove Cannery	False Pass Ferry Dock	
ID Number	03-D	04-D	05-D	35-LII	36-LII	37-LII	38-LII	39-LII	56-LI	57-LI	58-LI	
Location	54°46.38'N 163°16.06'W	54°42.13'N 163°21.48'W	54°58.76'N 164°18.12'W	55°12.47'N 162°41.70'W	55°12.84'N 161°59.05'W	54°57.42'N 162°23.96'W	55°12.74'N 162°40.90'W	55°02.27'N 162°19.19'W	55°03.38'N 162°19.36'W	55°03.57'N 162°19.14'W	54°51.34'N 163°24.37'W	
Maximum Vessel Size	Deep draft, greater than 20,000 Gross Tons			Light draft-II, 10,000 to 20,000 Gross Tons					Light draft-I, 300 to 9,999 Gross Tons			
Type of Berthing	Anchorage			Dock	Anchorage					Dock		
Contact	N/A			Mayor 907.532.2401	N/A					Harbormaster-907.497.2237	Plant Manager 907.497.2234	Mayor 907.548.2319
Navigational Approach	Approach from E	Approach from S	Approach from W-NE	Approach from the SE	Approach from the S	Approach from the N	Approach from the S, SE	Approach from the S	Approach from the S		Approach from the SE	
Minimum Water Depth	25 Fathoms in swing area	26 Fathoms in swing area	16 Fathoms in swing area	28 Feet on Approach	48 Feet in the swing area	13 Fathoms in the swing area	13 Fathoms in the swing area	13 Fathoms in the swing area	32 Feet at the dock face		28 Feet at the dock face	
Maximum Water Depth	33 Fathoms in swing area	33 Fathoms in swing area	18 Fathoms in the swing area	32 Feet at the dock face	11 Fathoms in the swing area	15 Fathoms in the swing area	18 Fathoms in the swing area	16 Fathoms in the swing area	32 Feet at the dock face		28 Feet at the dock face	
Maximum Vessel Draft	60 ft.		60 ft.	32 ft.	40 ft.	30 ft.	6 ft. tidal dependant approach	10 ft. tidal dependant approach	27 ft.	29 ft.	20 ft.	
Swing Room/Dock Face	Ikatan - 5400; Otter - 6200; Slime - 6000	3000 ft.		450 ft.	3000 ft.	3000 ft.	3000 ft.	1800 ft.	150 ft. Dock Face 330 ft. w/ dolphins	400 ft.	175 ft.	
Bottom Type	Sand, Mud	Mud/Shells	Shells	N/A	Sand	Sticky	Sand	Mud	N/A			
Docks/Piers	Nearest Alt. Dock 06-D Dutch Harbor APL Dock			Nearest Alt. Dock 56-LI King Cove City Dock			Nearest Alt. Dock 35-LII Cold Bay Dock	Nearest Alt. Dock 56-LI King Cove City Dock	Nearest Alt. Dock 57-LI King Cove Cannery Dock	Nearest Alt. Dock 56-LI King Cove City Dock	Nearest Alt. Dock 56-LI King Cove City Dock	
Moorings	Nearest Mooring - Wide Bay 06-D											
Anchorage	Nearest Alt. Anchorage-04-D Otter Cove	Nearest Alt. Anchorage-03-D Ikatan Bay	Nearest Alt. Anchorage-03-D Ikatan Bay	Nearest Alt. Anchorage 37-LII Fox Island	Nearest Alt. Anchorage 39-LII King Cove		Nearest Alt. Anchorage 37-LII Fox Island		Nearest Alt. Anchorage 39-LII King Cove		Nearest Alt. Anchorage 03-D Ikatan	
Prevailing Winds	Winter-Northerly, Southeasterly Summer-Westerly, Southwesterly- Strong winds are frequent from bays and passes											
Currents	Alaska Coastal Current runs west offshore at 1 kt. Local currents are tidally influenced. All passes in the subarea have significant currents	Local currents are tidally influenced. All passes in the subarea have significant currents		Currents are tidal influenced and are strong in the bay entrance	Currents are tidal influenced			Currents are tidal influenced and are strong in the bay entrance	Currents are tidal influenced		Current can attain 7 knts in the Isanotski Strait	
Tides	Mean High Water-5.9 (Higher- 6.5) , Mean Low Water- 1.3 (Lower- -3.5)			Mean High Water-3.5 (Higher- 4.1) , Mean Low Water- 1.4 (Lower- -3.0)		Mean High Water- 6.0 (Higher- 6.7) , Mean Low Water- 1.3 (Lower- -3.5)					Mean High Water-5.9 (Higher- 6.5) , Mean Low Water- 1.3 (Lower- -3.5)	
Sea Conditions	Exposed to seas from the E	Exposed to seas from the S	Exposed to seas from the W-NE	Exposed to seas from the E	Exposed to seas from the S	03-D	04-D	05-D	35-LII	36-LII	37-LII	
Shelter from Severe Storms	Sheltered S and W	Sheltered W-E	Sheltered E-S	Sheltered S-N	Sheltered W-E	Sheltered W-E	Sheltered W-E	Sheltered W-E		Sheltered from the E and W		
Fog	Fog can occur during all seasons.											
Sea ice	Sea ice maybe present December-March											

NOTE: Sensitive resource information can be found on other maps which can be accessed through the sensitive area section of the Aleutian Subarea Contingency Plan: <http://www.akrrt.org/AIPlan/aitoc.shtml>