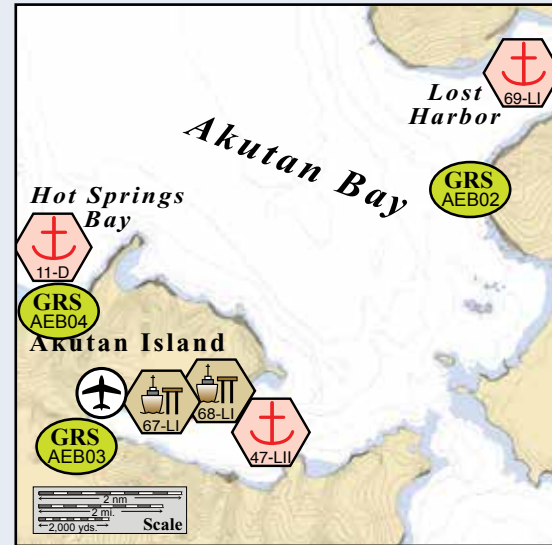
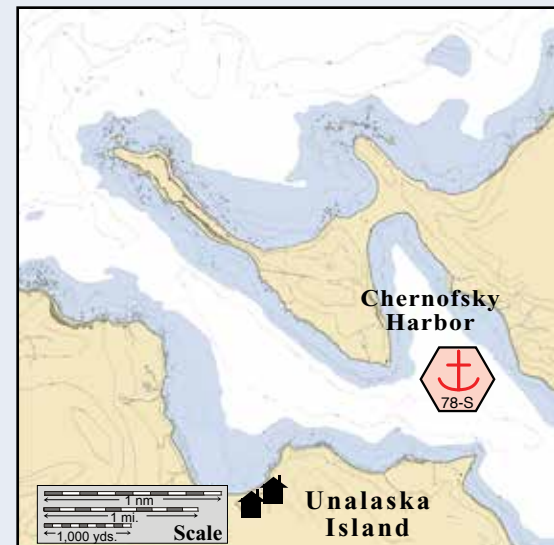


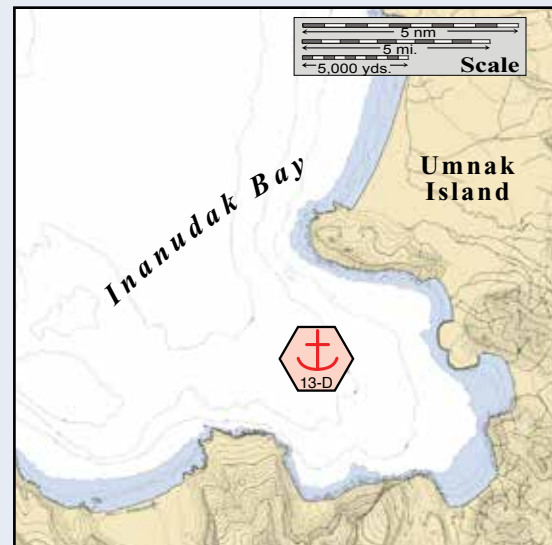
Akutan Harbor.



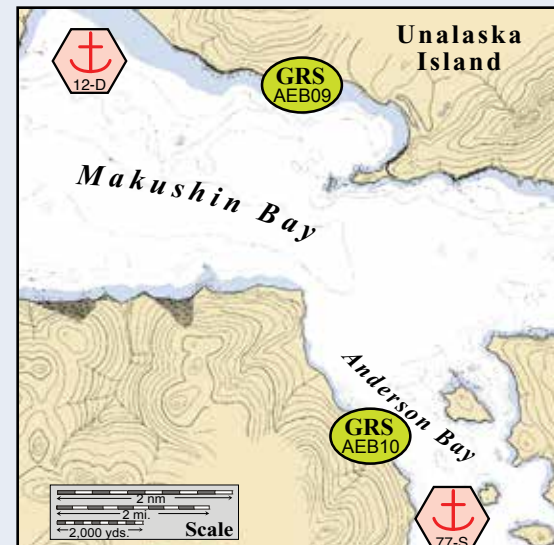
Akutan Bay, Hot Springs Bay, and Lost Harbor.



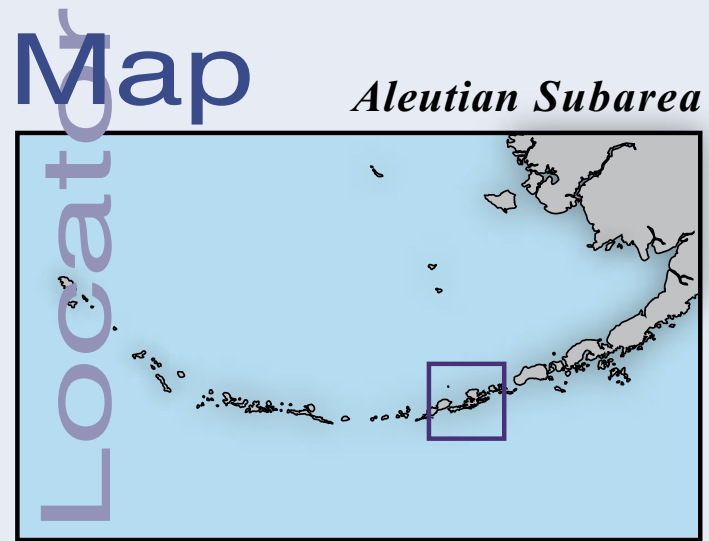
Chernofsky Harbor.



Inanudak Bay.

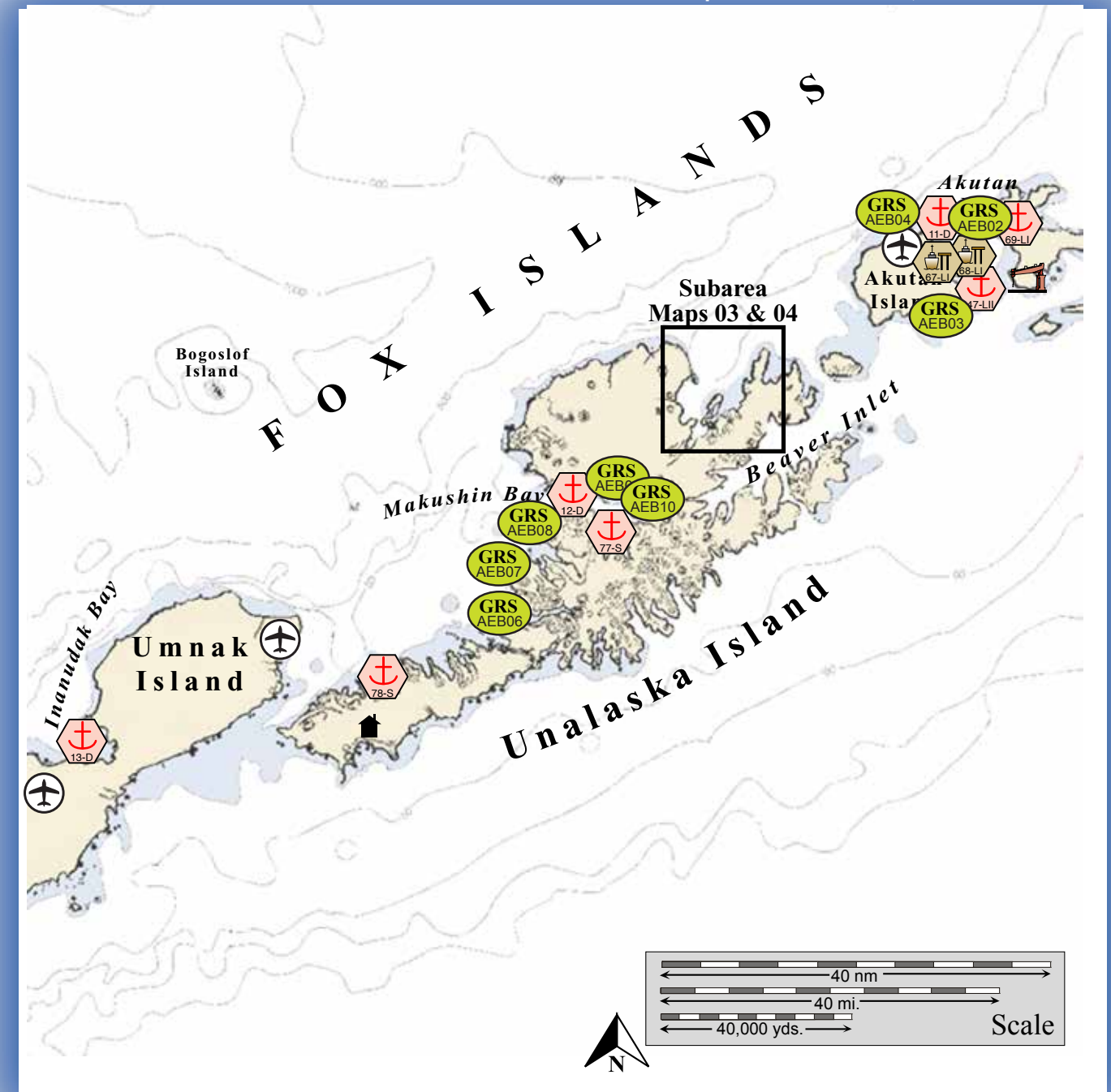


Makushin Bay.



Map Aleutian Subarea

Center of map at 53° 41.58' N Lat., 166° 58.23' W Lon.



This is not intended for navigational use.

Soundings in fathoms

	Anchorage		Existing GRS
	Mooring		Fish Hatchery
	Dock/pier		Private Cabins
	Crane		Public Use Cabins
	Airport		Boat Harbor

Map Legend

Aleutian PPOR Map 05

Site Considerations for PPOR Map 05 of the Aleutian Subarea										Site ID Number and Vessel Class Classification		
	Hot Springs Bay	Makushin Bay	Inanudak Bay	Akutan Harbor	Akutan City Dock	Akutan Cannery	Lost Harbor	Anderson Bay	Chernofsky Harbor			
ID Number	11-D	12-D	13-D	47-LII	67-LI	68-LI	69-LI	77-S	78-S			
Human Health & Safety												
Communities – distances-nm	Akutan-8	Unalaska-52	Nikolski-1	Akutan-4.5	Akutan-0.0	Akutan-0.0	Akutan-4.5	Unalaska-53	Unalaska-73			
Natural Resource Considerations												
Fish & Wildlife	Spawning salmon, Steller's sea lions, seals, sea otters, waterfowl concentrations, seabird and eagle nesting, shorebird concentration			Spawning salmon, seals, sea otters, waterfowl concentrations, seabird and eagle nesting				Spawning salmon, Steller's sea lions, seals, sea otters, waterfowl concentrations, seabird and eagle nesting, shorebird concentration				
Threatened & Endangered Species	Steller's Eider, sea otters and short-tailed albatross are present	Steller's sea lion, sea otters and short-tailed albatross are present	Steller's Eider, sea otters and short-tailed albatross are present				Stellers Eiders, Steller's sea lions, sea otters and short-tailed albatross are present	Steller's Eider, sea otters and short-tailed albatross are present				
Sensitive Areas	Designated as a Most Environmentally Sensitive Area (MESA 28b-ADF&G)	Not Designated		Designated as a Most Environmentally Sensitive Area (MESA 28b-ADF&G)	Designated as a Most Environmentally Sensitive Area (MESA 28b-ADF&G)			Not Designated				
Invasive Species-Rats	This area is rat-free	Rats are present	These areas are rat-free	Rats are present			These areas are rat-free	Rats are present				
Other Stakeholder Considerations												
Fisheries	Groundfish, herring, salmon, crab											
Historic Properties	If suspected cultural artifacts are encountered, notify the State Historic Preservation Office and the land managers. Review adjacent GRS (if applicable) for information on historic properties.											
Mariculture	None											
Subsistence	Salmon, marine mammals, waterfowl, crab, intertidal	None	Salmon, marine mammals, waterfowl, crab, intertidal	Salmon, marine mammals, waterfowl, crab, groundfish, intertidal				None				
Tourism/Recreation	Recreational use area- sport fishing, kayaking, excursion boats, wildlife viewing											
Waterfront Public Facilities/Parks	Alaska Maritime National Wildlife Refuge-no facilities immediately available			Alaska Maritime National Wildlife Refuge-no facilities immediately available, Small Boat Basin			Alaska Maritime National Wildlife Refuge-no facilities immediately available					
Waterfront Private Facilities	None			Cannery facilities nearby				None				
Response and Salvage Resource Considerations												
Ability to Boom Vessel	Weather dependent											
Emergency Towing System	An emergency tow system is available to assist disabled vessels in Unalaska and Aleutian Subarea. Contact the USCG MSD-Unalaska-907.581.3466 and the Unalaska Harbor Master 907.581.1254 for additional information.											
Geographic Response Strategies	AEB-04 Hot Springs Bay/Open Bight	AEB-09 Mouth of Makushin Bay	AEB-20 Nikolski Bay	AEB-03 Akutan Harbor	AEB-03 Akutan Harbor		AEB-02- Lost Hbr & Surf Bay, AEB-04 Hot Springs Bay/Open Bight	AEB-10 Head of Makushin Bay	None			
Closest Alternative Places of Refuge (same sized vessel)	38 nm. to 06-D Wide Bay	47 nm. to 06-D Wide Bay	60 nm. to 15-D Applegate Cove	7 nm to 12-D Hot Springs Bay	.5 nm. to 66-LI Akutan Cannery	.5 nm to 65-LI Akutan City Dock	7.5 nm to 65-LI Akutan City Dock	43 nm to 77-S Chernofsky Harbor	43 nm to 76-S Anderson Bay			
Stakeholders for PPOR Map 05 of the Aleutian Subarea												
Year-2007	Contact											
Akutan Corporation	Director											
Aleut Corporation	President											
Aleutians East Borough	Mayor											
Alaska Dept of Fish & Game	Resource Manager											
Alaska Department of Natural Resources	Natural Resource Manager											
Alaska Maritime National Wildlife Refuge	Dept of the Interior-Regional Environmental Officer											
Aleut Marine Mammal Commission	Director											
City of Akutan	Mayor											
Ounalashka Corporation	CEO											
Native Allotments	Dept of the Interior-Regional Environmental Officer											
Physical and Operational Characteristics for PPOR Map 05 of the Aleutian Subarea												
	Hot Springs Bay	Makushin Bay	Inanudak Bay	Akutan Harbor	Akutan City Dock	Akutan Cannery	Lost Harbor	Anderson Bay	Chernofsky Harbor			
ID Number	11-D	12-D	13-D	47-LII	67-LI	68-LI	69-LI	77-S	78-S			
Location	54°10.84'N 165°51.04'W	53°45.43'N 166°57.68'W	53°17.68'N 168°25.87'W	54°07.74'N 165°44.03'W	54°07.99'N 165°46.70'W	54°08.00'N 165°46.43'W	54°13.55'N 165°36.78'W	53°40.03'N 166°50.61'W	53°23.92'N 167°30.89'W			
Maximum Vessel Size	Deep draft, greater than 20,000 Gross Tons				Light draft-II, 10,000 to 19,999 Gross Tons		Light draft-I, 300 to 9,999 Gross Tons			Shallow draft, 300 Gross Tons or less		
Type of Berthing	Anchorage				Dock			Anchorage				
Contact	N/A				Mayor 907.274.7555		Facility Manager 907.698.2211		N/A			
Navigational Approach	Approach from NE	Approach from W	Approach from the NW	Approach from the E	Approach from the E		Approach from the W	Approach from the NW	Approach from the NE			
Minimum Water Depth	20 Fathoms in swing area	36 Fathoms in swing area	30 Fathoms in the swing area	20 Fathoms in the swing area	30 Feet at the dock face	30 Feet at the dock face	60 Feet in the swing area	53 Fathoms in the swing area	60 Feet in the swing area			
Maximum Water Depth	22 Fathoms in swing area	38 Fathoms in swing area	20 Fathoms in the swing area	32 Fathoms in the swing area	30 Feet at the dock face	30 Feet at the dock face	22 Fathoms in the swing area	58 Fathoms in the swing area	13 Fathoms in the swing area			
Maximum Vessel Draft	60 ft.			35 ft.	28 ft.	25 ft.						
Swing Room/Dock Face	3000 ft.	2800 ft.	6000 ft.	2500 ft.	350 ft.	450 ft.	1200 ft.	2800 ft.	1200 ft.			
Bottom Type	Mud, Sand	Mud, Hard	Sand	Mud	N/A			Mud, Sand	Mud	Mud		
Docks/Piers	Nearest Alt. Dock 09-D Dutch Harbor APL Dock					Nearest Alt. Dock 68-L Akutan Cannery	Nearest Alt. Dock 67-L Akutan City Dock	Nearest Alt. Dock 67-L Akutan City Dock	Nearest Alt. Dock 61-LI Light Cargo Dock			
Moorings	Nearest Mooring - Wide Bay 06-D											
Anchorage	Nearest Alt. Anchorage-06-D Wide Bay			Nearest Alt. Anchorage-14-D Applegate Cove	Nearest Alt. Anchorage-11-D Hot Springs Bay	Nearest Alt. Anchorage 69-LI Lost Harbor		Nearest Alt. Anchorage 47-LII Akutan Harbor	Nearest Alt. Anchorage- 78-S Chernofsky Harbor	Nearest Alt. Anchorage- 77-S Anderson Bay		
Prevailing Winds	Summer-southwest through northwest winds are common. Winter- winds occur from all directions.											
Currents	Local currents are tidally influenced. All passes in the subarea have significant currents											
Tides	Mean High Water-3.6 (Higher- 4.0) , Mean Low Water- 1.3 (Lower- -2.5)	Mean High Water-3.6 (Higher- 4.0) , Mean Low Water- 1.3 (Lower- -2.5)	Mean High Water-3.3 (Higher- 3.7) , Mean Low Water- 1.1 (Lower- -2.5)	Mean High Water-3.7 (Higher- 3.9) , Mean Low Water- 1.3 (Lower- -2.5)	Mean High Water-3.7 (Higher- 3.9) , Mean Low Water- 1.3 (Lower- -2.5)			Mean High Water-3.6 (Higher- 4.0) , Mean Low Water- 1.3 (Lower- -2.5)	Mean High Water-3.5 (Higher- 3.8) , Mean Low Water- ---- (Lower- -2.5)			
Sea Conditions	Exposed to seas from N-S	Exposed to seas from S-W	Exposed to seas from N-W	Exposed to seas from SE-SW				Exposed to seas from the SW-W		Sheltered from extreme sea states		
Shelter from Severe Storms	Sheltered from storms from S-NW	Sheltered from storms from NW-S	Sheltered from storms from N-SW	Sheltered from storms from S-N				Sheltered from storms from NW-SW		Sheltered from all but extreme storms		
Fog	Fog is common during all seasons											
Sea ice	Sea ice unlikely											

NOTE: Sensitive resource information can be found on other maps which can be accessed through the sensitive area section of the Aleutian Subarea Contingency Plan: <http://www.akrrt.org/AIPlan/aitoc.shtml>