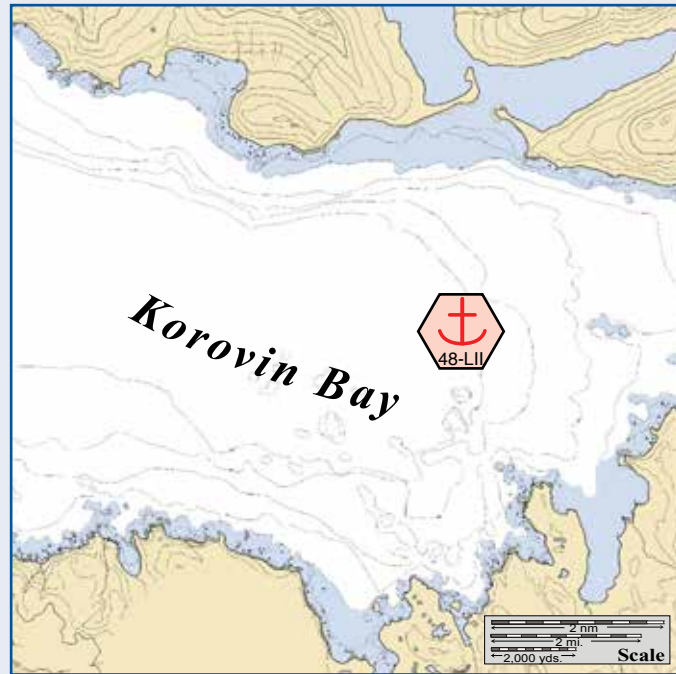
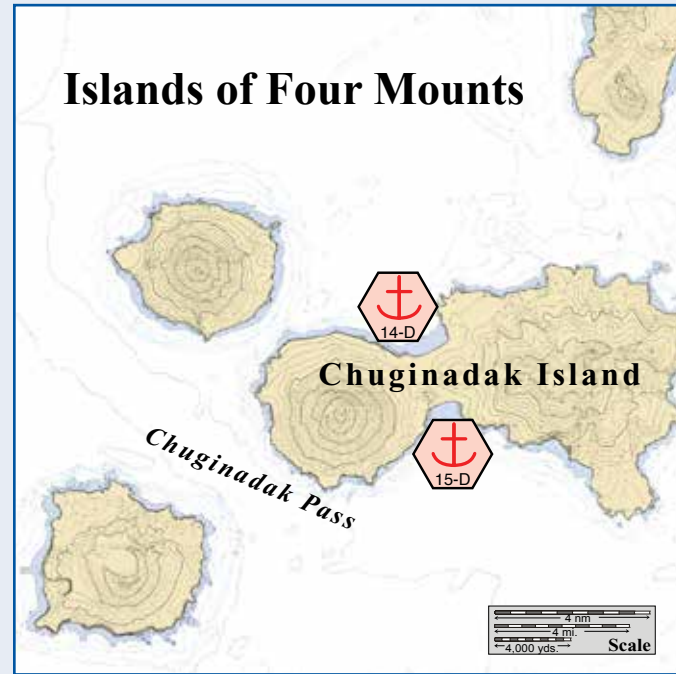


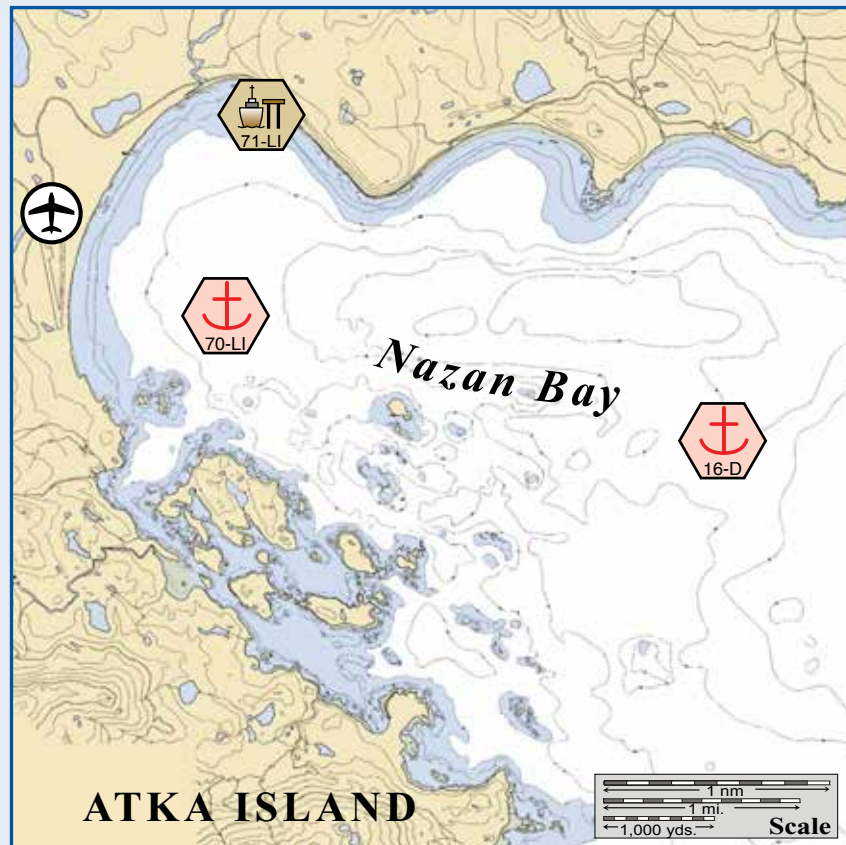
Center of Map 52° 13.07' N Lat., 174° 11.73' W Lon.



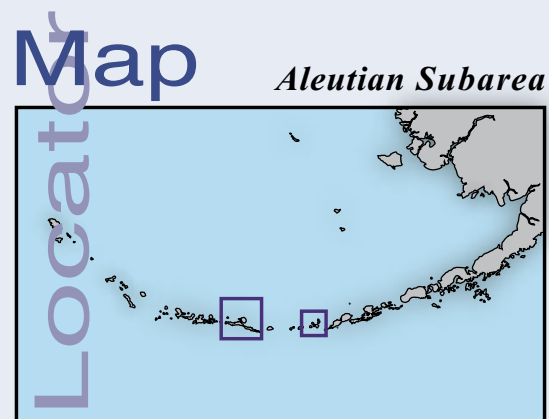
Korovin Bay.



Applegate Cove.



Nazan Bay.



Map Location

Aleutian Subarea



This is not intended for navigational use.

Soundings in fathoms

	Anchorage		Existing GRS
	Mooring		Fish Hatchery
	Dock/pier		Private Cabins
	Crane		Public Use Cabins
	Airport		Boat Harbor

Map Legend

Aleutian PPOR Map 06

Site Considerations for PPOR Map 06 of the Aleutian Subarea							Site ID Number and Vessel Class Classification
	Applegate Cove	South Cove	Nazan Bay-1	Korovin Bay	Nazan Bay-2	Atka	
ID Number	14-D	15-D	16-D	48-LII	70-LI	71-LI	
Human Health & Safety							
Communities – distances-nm	Nikolski-39	Nikolski-40	Atka-3.5	Atka-35	Atka-1	Atka-1.5	
Natural Resource Considerations							
Fish & Wildlife	Steller's sea lions, seals, sea otters, waterfowl concentrations, seabird nesting		Spawning salmon, seals, sea otters, waterfowl concentrations, seabird nesting, intertidal	Spawning salmon, Steller's sea lions, seals, sea otters, waterfowl concentrations, seabird nesting, intertidal	Spawning salmon, seals, sea otters, waterfowl concentrations, seabird nesting, intertidal		
Threatened & Endangered Species	Stellers sea lions, sea otters and short-tailed albatross are present						
Sensitive Areas	Designated as a Most Environmentally Sensitive Area (MESA 29-ADF&G)			Not Designated			
Invasive Species-Rats	This area is rat-free			Rats are present			
Other Stakeholder Considerations							
Fisheries	Groundfish, crab						
Historic Properties	If suspected cultural artifacts are encountered, notify the State Historic Preservation Office and the land managers. Review adjacent GRS (if applicable) for information on historic properties.						
Mariculture	None						
Subsistence	Salmon, marine mammals, waterfowl, crab, intertidal						
Tourism/Recreation	Local recreation, occasional tourism						
Waterfront Public Facilities/Parks	Alaska Maritime National Wildlife Refuge- no facilities available						
Waterfront Private Facilities	None						
Response and Salvage Resource Considerations							
Ability to Boom Vessel	No				Weather dependent	No	
Emergency Tow System	An emergency tow system is available to assist disabled vessels in Unalaska and Aleutian Subarea. Contact the USCG MSD-Unalaska-907.581.3466 and the Unalaska Harbor Master 907.581.1254 for additional information.						
Geographic Response Strategies	None						
Closest Alternative Places of Refuge (same sized vessel)	17 nm. to 16-D South Cove	17 nm. to 15-D Applegate Cove	125 nm. to 15-D Applegate Cove	33 nm. to 17-D to Nazan Bay	1 nm to 69-LI Atka	1 nm to 68-LI Nazan Bay-2	

Site ID Number and Vessel Class Classification

D = A deep draft vessel that exceeds 20,000 Gross Tons, has drafts of 25-60 ft. and ranges from 450 ft.-1000 ft. LOA, typical of Tankers/ Cruiseships

LII= A light draft vessel of 10,000 to 19,999 Gross Tons, has drafts up to 25 ft., LOA up to 450 ft., typical of Ferrys/Trampers

LI= A light draft vessel of 300 to 9,999 Gross Tons, has drafts up to 25 ft., LOA up to 450 ft., typical of Ferrys/ Trampers

S = A shallow draft vessel less than 300 Gross Tons, has a draft less than 15 ft., LOA less than 200 ft., typical of Excursion/Fishing vessels

Stakeholders for PPOR Map 06 of the Aleutian Subarea		Physical and Operational Characteristics for PPOR Map 06 of the Aleutian Subarea						
Year-2007	Contact	Applegate Cove	South Cove	Nazan Bay-1	Korovin Bay	Nazan Bay-2	Atka	
Aleut Corporation	President	ID Number	14-D	15-D	16-D	48-LII	70-LI	71-LI
Aleutians East Borough	Mayor	Location	52°52.24'N 169°53.62'W	52°48.28'N 169°51.10'W	52°12.12'N 174°06.35'W	52°14.95'N 174°19.14'W	52°12.73'N 174°10.47'W	52°13.88'N 174°10.51'W
Aleutians West CRSA Coastal District	Coordinator	Maximum Vessel Size	Deep draft, greater than 20,000 Gross Tons			Light draft-II, 10,000 to 19,999 Gross Tons	Light draft-I, 300 to 9,999 Gross Tons	
Alaska Dept of Fish & Game	Resource Manager	Type of Berthing	Anchorage					Dock
Alaska Department of Natural Resources	Natural Resource Manager	Contact	N/A					City Administrator 907.893.2233
Aleut Marine Mammal Commission	Director	Navigational Approach	Approach from N	Approach from S	Approach from E	Approach from the W	Approach from E	
Alaska Maritime National Wildlife Refuge	Dept of the Interior- Regional Environmental Officer	Minimum Water Depth	17 Fathoms in swing area	34 Fathoms in swing area	38 Fathoms in the swing area	40 Fathoms in the swing area	20 Fathoms in swing area	5 Fathoms at the Dock face
Atxam Corporation	President	Maximum Water Depth	48 Fathoms in swing area	54 Fathoms in swing area	50 Fathoms in the swing area	67 Fathoms in the swing area	40 Fathoms in the swing area	5 Fathoms at the Dock face
City of Atka	Mayor	Maximum Vessel Draft	60 ft.					25 ft.
Native Allotments	Dept of the Interior- Regional Environmental Officer	Swing Room/Dock Face	4200 ft.	3000 ft.	6000 ft.	6000 ft.	5600 ft.	100 ft.
		Bottom Type	Sand	Rocky	Mud, Sand	Mud		N/A
		Docks/Piers	Nearest Alt. Dock 06-D Dutch Harbor APL Dock			Nearest Alt. Dock 50-II Adak Fuel Pier	Nearest Alt. Dock 71-LI Atka Dock	Nearest Alt. Dock 50-II Adak Fuel Pier
		Moorings	Nearest Mooring - Wide Bay 06-D					
		Anchorage	Nearest Alt. Anchorage-15-D South Cove	Nearest Alt. Anchorage-14-D Applegate Cove	Nearest Alt. Anchorage-14-D Applegate Cove	Nearest Alt. Anchorage-16-D Nazan Bay	Nearest Alt. Anchorage-72-LI Tanaga Island	Nearest Alt. 70-LI Nazan Bay-2
		Prevailing Winds	Northwest winds are common year round					
		Currents	Local currents in the passes are strong and complex. Currents are generally weak outside of the passes.		Local currents in the passes are strong and complex. Amlia Pass should be avoided. Currents are generally weak outside of the passes.			
		Tides	Mean High Water- 3.7 (Higher- 4.2) , Mean Low Water- --- (Lower- 2.5)		Mean High Water- ---- (Higher- 3.3) , Mean Low Water- ---- (Lower- -3.0)			
		Sea Conditions	Exposed to seas from NW-NE	Exposed to seas from E-W	Exposed to seas from NE-SE	Exposed to seas from SW-NW	Exposed to seas from NE-SE	Exposed to seas from the E
		Shelter from Severe Storms	Sheltered SE-SW	Sheltered E-W	Sheltered S-N	Sheltered N-S	Sheltered S-N	Sheltered S-N
		Fog	Fog is frequent and severe in all seasons					
		Sea ice	Sea ice unlikely					

NOTE: Sensitive resource information can be found on other maps which can be accessed through the sensitive area section of the Aleutian Subarea Contingency Plan: <http://www.akrrt.org/AIPlan/aitoc.shtml>