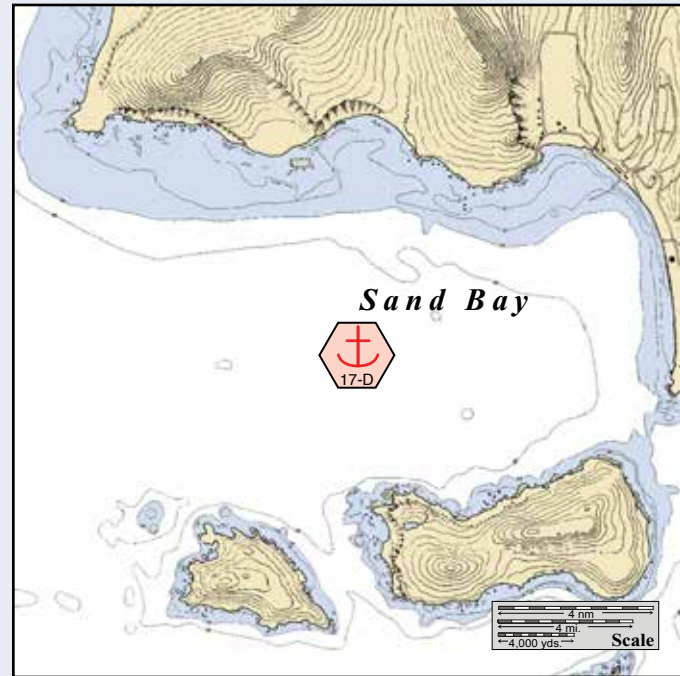
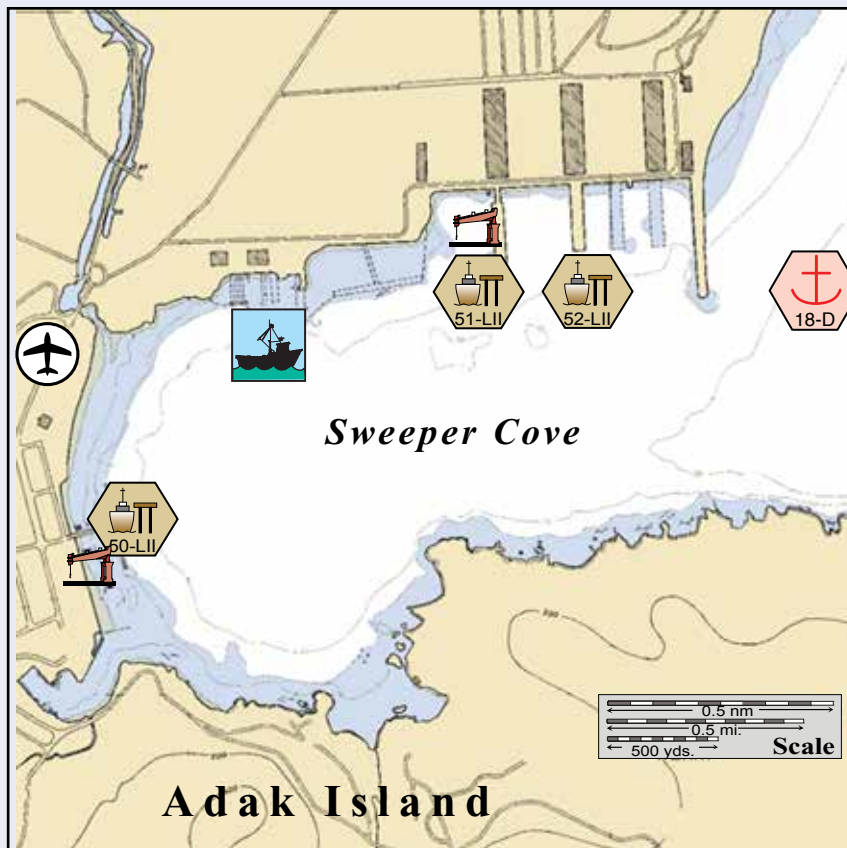


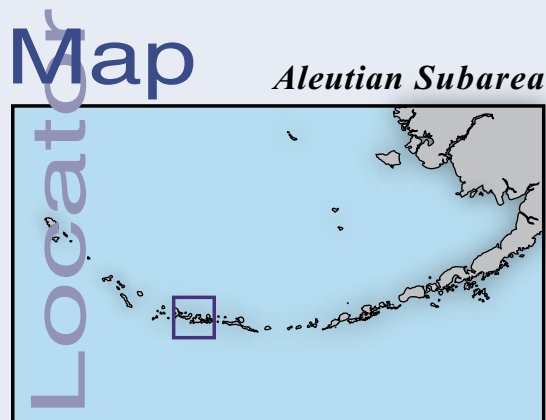
Tanaga Bay.



Sand Bay.

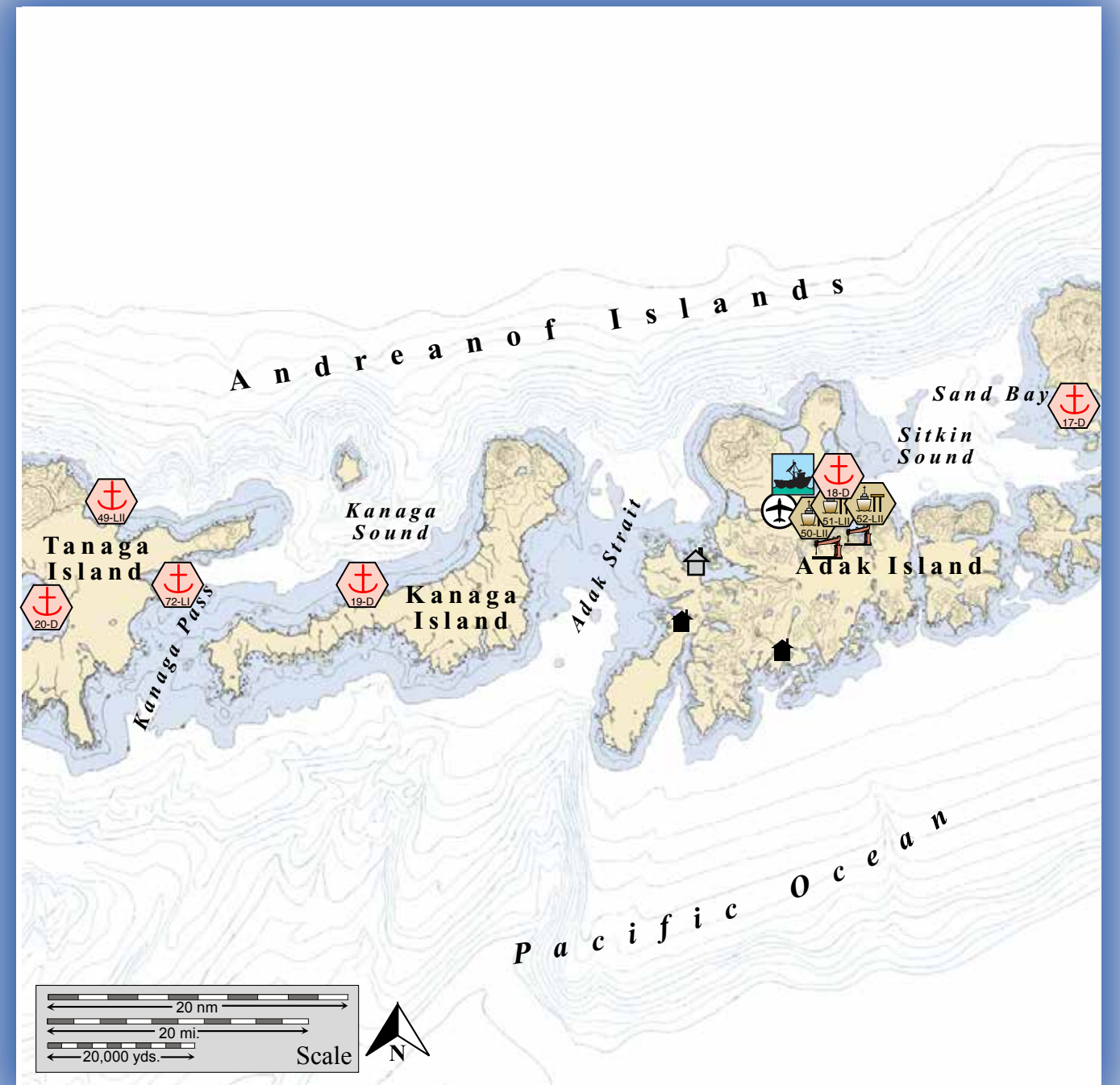


Sweeper Cove.



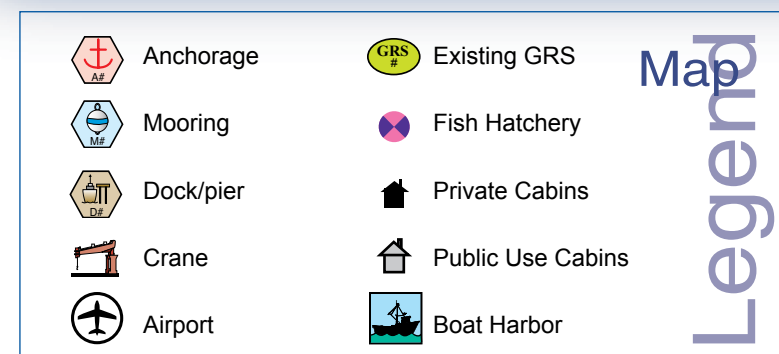
Map Location

Aleutian Subarea



This is not intended for navigational use.

Soundings in fathoms



Map Legend

# Aleutian PPOR Map 07

Site Considerations for PPOR Map 07 of the Aleutian Subarea									
	Sand Bay	Kuluk Bay	North Kanaga Island	Tanaga Bay	Tanaga Island-Gusty Bay	Adak Fuel Pier 10	Adak Supply Pier #5	Adak Berthing Pier #3	Tanaga Island-Hotsprings Bay
<b>ID Number</b>	<b>17-D</b>	<b>18-D</b>	<b>19-D</b>	<b>20-D</b>	<b>49-LII</b>	<b>50-LII</b>	<b>51-LII</b>	<b>52-LII</b>	<b>72-LI</b>
<b>Human Health &amp; Safety</b>									
Communities – distances-nm	Adak-20	Adak-3	Adak-50	Adak-112	Adak-98	Adak-0.0	Adak-0.5	Adak-0.5	Adak- 96
<b>Natural Resource Considerations</b>									
Fish & Wildlife	Spawning salmon, seals, sea otters, seabird nesting			Spawning salmon, seals, sea otters, waterfowl concentrations, seabird nesting		Spawning salmon, seals, sea otters, seabird nesting			Spawning salmon, seals, sea otters, waterfowl concentrations, seabird nesting
Threatened & Endangered Species	Stellar's Eider, Steller's sea lions, sea otters and short-tailed albatross are present throughout								
Sensitive Areas	Not Designated								
Invasive Species-Rats	Rats are present			These areas are rat-free			Rats are present		These areas are rat-free
<b>Other Stakeholder Considerations</b>									
Fisheries	Groundfish, crab								
Historic Properties	If suspected cultural artifacts are encountered, notify the State Historic Preservation Office and the land managers. Review adjacent GRS (if applicable) for information on historic properties.								
Mariculture	None								
Subsistence	Salmon, marine mammals, waterfowl, crab								
Tourism/Recreation	Local recreation, occasional tourism			None			Local recreation, occasional tourism		None
Waterfront Public Facilities/Parks	Alaska Maritime National Wildlife Refuge- no facilities available	Alaska Maritime National Wildlife Refuge. Adak Harbor nearby	Alaska Maritime National Wildlife Refuge- no facilities available			Alaska Maritime National Wildlife Refuge, Port of Adak Harbor Facilities			Alaska Maritime National Wildlife Refuge
Waterfront Private Facilities	None								
<b>Response and Salvage Resource Considerations</b>									
Ability to Boom Vessel	Weather dependent				No		Weather dependent		No
Emergency Tow System	An emergency tow system is available in Adak. Contact the City office for access information.								
Geographic Response Strategies	None								
Closest Alternative Places of Refuge (same sized vessel)	17 nm. to 18-D Kuluk Bay	17 nm. to 17-D Sand Bay	53 nm. to 20-D Tanaga Bay	53 nm. to 19-D North Kanaga Island	98 nm. To 50-LII Adak Fuel Pier 10	0.5 nm. to 51-LII Adak Berthing #3	0.1 nm. to 52-LII Adak berthing Pier #3	0.1 nm. to 51-LII Adak Supply Pier #5	22 nm 49-LII Tanaga Island-Gusty Bay

Site ID Number and Vessel Class Classification
D = A deep draft vessel that exceeds 20,000 Gross Tons, has drafts of 25-60 ft. and ranges from 450 ft.-1000 ft. LOA, typical of Tankers/ Cruiseships
LII= A light draft vessel of 10,000 to 19,999 Gross Tons, has drafts up to 25 ft., LOA up to 450 ft., typical of Ferrys/Trampers
LI= A light draft vessel of 300 to 9,999 Gross Tons, has drafts up to 25 ft., LOA up to 450 ft., typical of Ferrys/ Trampers
S = A shallow draft vessel less than 300 Gross Tons, has a draft less than 15 ft., LOA less than 200 ft., typical of Excursion/Fishing vessels

Physical and Operational Characteristics for PPOR Map 07 of the Aleutian Subarea										
	Sand Bay	Kuluk Bay	North Kanaga Island	Tanaga Bay	Tanaga Island-Gusty Bay	Adak Fuel Pier 10	Adak Supply Pier #5	Adak Berthing Pier #3	Tanaga Island-Hotsprings Bay	
<b>ID Number</b>	<b>17-D</b>	<b>18-D</b>	<b>19-D</b>	<b>20-D</b>	<b>49-LII</b>	<b>50-LII</b>	<b>51-LII</b>	<b>52-LII</b>	<b>72-LI</b>	
Location	51°58.58'N 176°07.97'W	51°53.10'N 176°34.51'W	51°46.46'N 177°25.05'W	51°44.50'N 178°01.83'W	51°51.94'N 177°52.31'W	51°51.24'N 176°39.16'W	51°51.67'N 176°38.25'W	51°51.68'N 176°38.06'W	51°46.94'N 177°45.85'W	
Maximum Vessel Size	Deep draft, greater than 20,000 Gross Tons				Light draft-II, 10,000 to 19,999 Gross Tons				Light draft-I, 300 to 9,999 Gross Tons	
Type of Berthing	Anchorage				Dock				Anchorage	
Contact	N/A				Port Administrator 907.592.0185				N/A	
Navigational Approach	Approach from W	Approach from E	Approach from N	Approach from the W	Approach from N	Approach from E				
Minimum Water Depth	20 Fathoms in swing area	34 Fathoms in swing area	20 Fathoms in the swing area	30 Fathoms in the swing area	70 Fathoms in swing area	30 Feet at the Dock face	30 Feet at the Dock face	30 Feet at the Dock face	38 Fathoms in the swing area	
Maximum Water Depth	25 Fathoms in swing area	54 Fathoms in swing area	40 Fathoms in the swing area	50 Fathoms in the swing area	30 Fathoms in the swing area	30 Feet at the Dock face	30 Feet at the Dock face	30 Feet at the Dock face	80 Fathoms in the swing area	
Maximum Vessel Draft	60 ft.									
Swing Room/Dock Face	4200 ft.	6000 ft.	3000 ft.	6000 ft.	3600 ft.	280ft. w dolphins-760 ft.	600 ft.	500 ft.	2800 ft.	
Bottom Type	Rocky, Sand, Gravel	Sand	Sand	Gravel	Rocky	N/A				
Docks/Piers	Nearest Alt. Dock 06-D Dutch Harbor APL Dock				Nearest Alt. Dock 52-LII Adak Berth #3		Nearest Alt. Dock 52-LII Adak Berth #3	Nearest Alt. Dock 51-LII Adak Berth #5		
Moorings	Nearest Mooring - Wide Bay 06-D									
Anchorage	Nearest Alt. Anchorage-18-D Kuluk Bay	Nearest Alt. Anchorage-17-D Sand Bay	Nearest Alt. Anchorage-20-D Tanaga Bay	Nearest Alt. Anchorage-19-D North Kanaga Island	Nearest Alt. Anchorage-72-LI Tanaga Island	Nearest Alt. Anchorage-18-D Kuluk Bay			Nearest Alt. Anchorage-17-D Sand Bay	
Prevailing Winds	Northwest winds are common year round									
Currents	Local currents in the passes are strong and complex. Currents are generally weak outside of the passes.									
Tides	Mean High Water- (Higher- 3.7), Mean Low Water- (Lower- -2.5)	Mean High Water- 3.6 (Higher- 3.7), Mean Low Water- 0.7 (Lower- -3.5)	Mean High Water-(Higher- 5.8) , Mean Low Water- (Lower - 0) Tide is chiefly diurnal	Mean High Water- (Higher- 7.3) , Mean Low Water- (Lower - 0) Tide is chiefly diurnal	Mean High Water- (Higher- 6.0) , Mean Low Water- (Lower - 0) Tide is chiefly diurnal	Mean High Water- 3.6 (Higher- 3.7), Mean Low Water- 0.7 (Lower- -3.5)			Mean High Water- (Higher- 3.1) , Mean Low Water- (Lower- -3.0) Tide is chiefly diurnal	
Sea Conditions	Exposed to seas from the W	Exposed to seas from NE-SE	Exposed to seas from the SW-NW	Exposed to seas from the W	Exposed to seas from the N	Strong surging seas on winds from the NE-SE			Exposed to seas from the E-S	
Shelter from Severe Storms	Sheltered N-S	Sheltered NE-SE	Sheltered E-S	Sheltered N-S	Sheltered SE-W	Sheltered S-N			Sheltered SW-N	
Fog	Fog is frequent and severe in all seasons									
Sea ice	Sea ice unlikely									

Stakeholders for PPOR Map 07 of the Aleutian Subarea	
Year-2007	Contact
Aleut Corporation	President
Alaska Dept of Fish & Game	Resource Manager
Alaska Department of Natural Resources	Natural Resource Manager
Alaska Maritime National Wildlife Refuge	Dept of the Interior-Regional Environmental Officer
Aleut Marine Mammal Commission	Director
City of Adak	Mayor
Native Allotments	Dept of the Interior-Regional Environmental Officer

NOTE: Sensitive resource information can be found on other maps which can be accessed through the sensitive area section of the Aleutian Subarea Contingency Plan: <http://www.akrrt.org/AIPlan/aitoc.shtml>