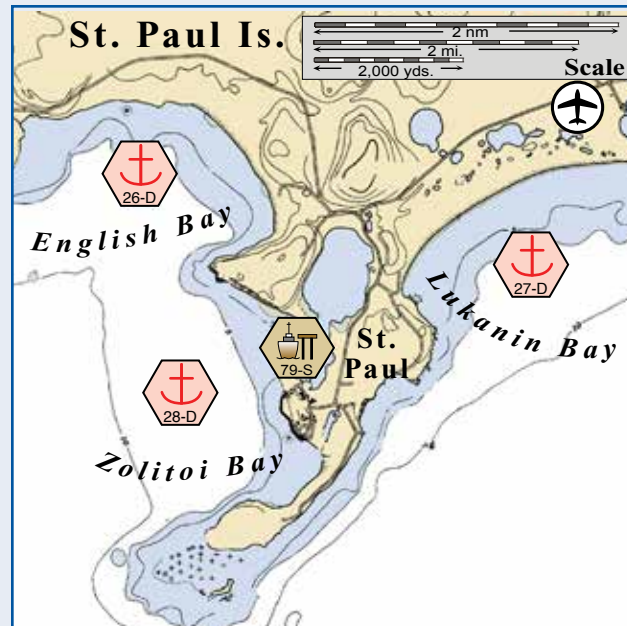
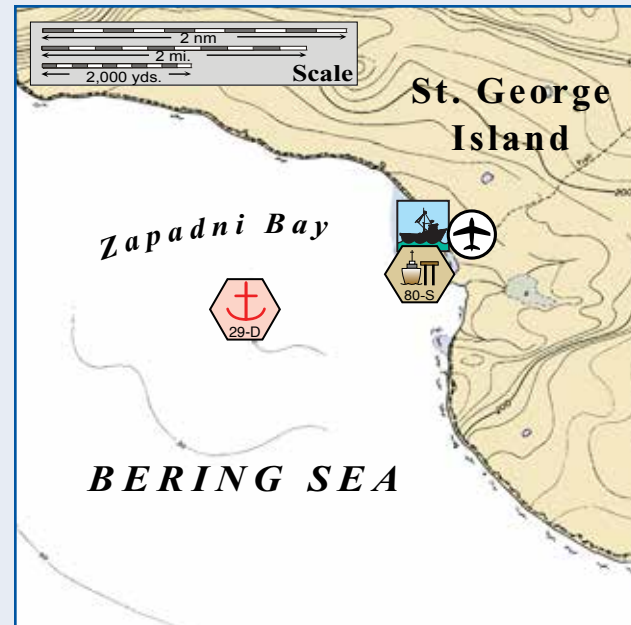




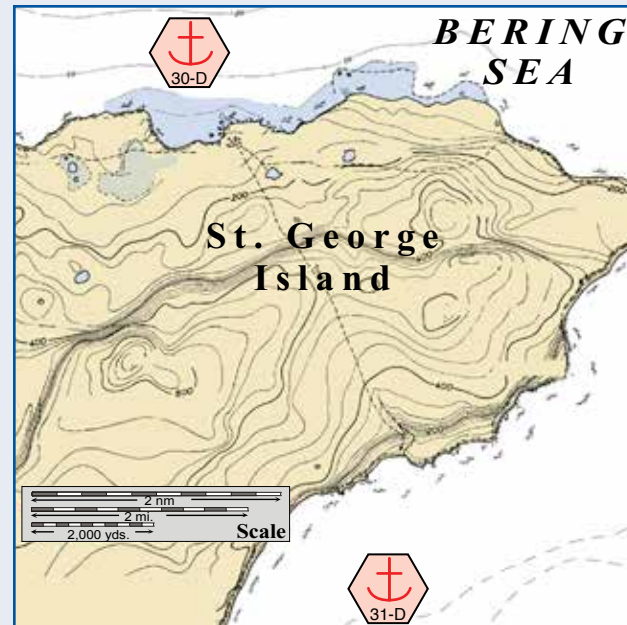
North Anchorage, St. Paul Island.



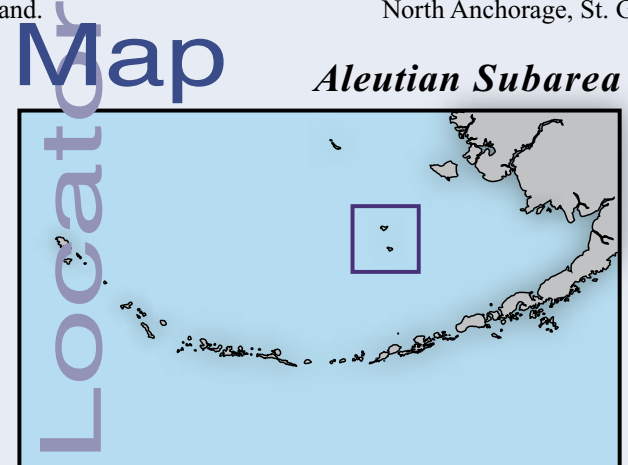
English Bay and Lukanin Bay - St. Paul Island.



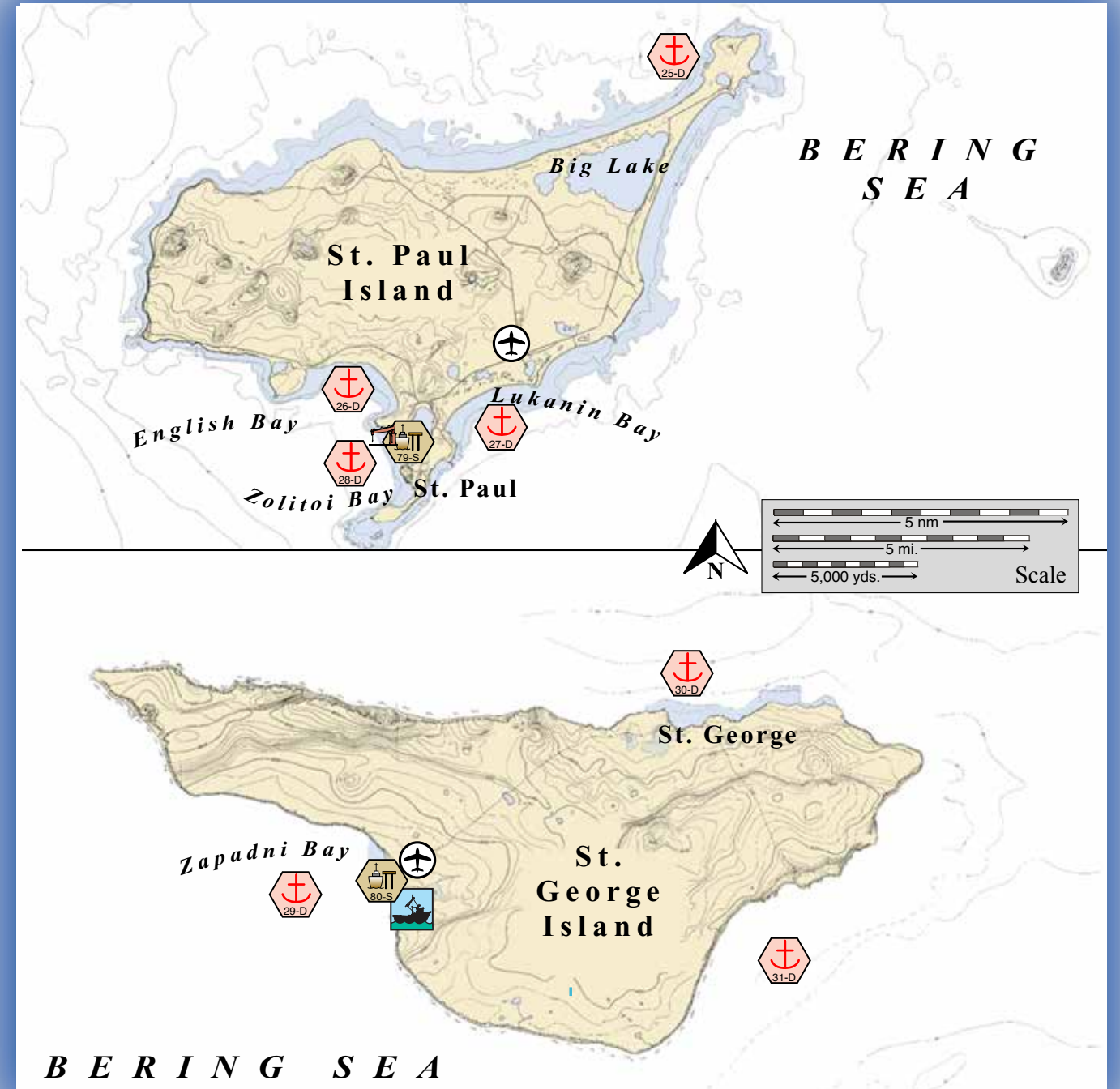
Zapadni Bay, St. George Island.



North Anchorage, St. George Island.

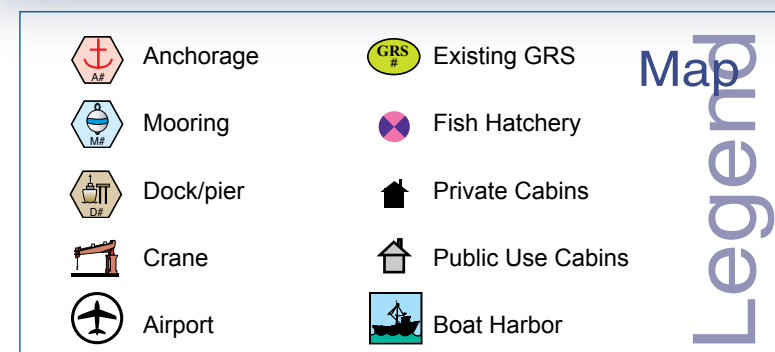


Center of Map 1: 57° 11.08' N Lat., 170° 11.53' W Lon.; Map 2: 56° 35.08' N Lat., 169° 34.42' W Lon.



This is not intended for navigational use.

Soundings in fathoms



Aleutian PPOR Map 10

Potential Places of Refuge for Aleutians Subarea

Site Considerations for PPOR Map 10 of the Aleutian Subarea										Site ID Number and Vessel Class Classification	
	North Point- St. Paul	English Bay-St. Paul	Lukanin Bay-St. Paul	Zolitoi Bay-St Paul	Zapadni Bay- St George	North Anchorage-St. George Is	Garden Cove- St.George	Village Cove Harbor-St Paul	St. George Harbor		
ID Number	25-D	26-D	27-D	28-D	29-D	30-D	31-D	79-S	80-S	D = A deep draft vessel that exceeds 20,000 Gross Tons, has drafts of 25-60 ft. and ranges from 450 ft.-1000 ft. LOA, typical of Tankers/ Cruiseships LII= A light draft vessel of 10,000 to 19,999 Gross Tons, has drafts up to 25 ft., LOA up to 450 ft., typical of Ferrys/Trampers LI= A light draft vessel of 300 to 9,999 Gross Tons, has drafts up to 25 ft., LOA up to 450 ft., typical of Ferrys/ Trampers S = A shallow draft vessel less than 300 Gross Tons, has a draft less than 15 ft., LOA less than 200 ft., typical of Excursion/Fishing vessels	
Human Health & Safety											
Communities – distances-nm	St. Paul- 18	St. Paul-1	St. Paul-2	St. Paul-1	St. George- 13	St. George-.05	St. George- 7	St. Paul-4.5	St. George- 14		
Natural Resource Considerations											
Fish & Wildlife	Northern fur seals, Stellers sea lions, seals, sea otters waterfowl concentrations, seabird and eagle nesting.										
Threatened & Endangered Species	Stellers sea lions, Northern fur seals, Stellers Eiders and sea otters are present										
Sensitive Areas	Designated as a Most Environmentally Sensitive Area (MESA 27-ADF&G)										
Other Stakeholder Considerations											
Fisheries	Groundfish, crab										
Historic Properties	Historic Properties are present throughout this area.										
Mariculture	None										
Subsistence	Marine mammals, waterfowl, crab, intertidal										
Tourism/Recreation	Seasonal Tourism and local recreational activities										
Waterfront Public Facilities/Parks	Alaska Maritime National Wildlife Refuge- no facilities available	Alaska Maritime National Wildlife Refuge- no facilities available-	Alaska Maritime National Wildlife Refuge-Village Cove Harbor Nearby	St. George Harbor-cannery facilities nearby	Alaska Maritime National Wildlife Refuge-no facilities immediately available	Village Cove Harbor-	St. George Harbor-				
Waterfront Private Facilities	None	Cannery and Fuel Dock facilities nearby	None	None	Cannery and Fuel Dock facilities nearby						
Response and Salvage Resource Considerations											
Ability to Boom Vessel	Weather Dependant							Yes			
Geographic Response Strategies	None										
Closest Alternative Places of Refuge (same sized vessel)	13 nm. to 27-D Sea Lion Point St. Paul	1.3 nm. to 30-D Zolitoi Bay	6 nm. to 30-D Zolitoi Bay	1.3 nm. to 28-D English Bay	9 nm. to 34-D Garden Cove	1 nm. to 31-D North Anchorage	8.5nm. to 32-D Zapadni Bay	40 nm to 79-S St. George Harbor	40 nm to 78-S Village Cove Harbor		

Physical and Operational Characteristics for PPOR Map 10 of the Aleutian Subarea										
	North Point- St. Paul	English Bay-St. Paul	Lukanin Bay-St. Paul	Zolitoi Bay-St Paul	Zapadni Bay- St George	North Anchorage-St. George Is	Garden Cove- St.George	Village Cove Harbor-St Paul	St. George Harbor	
Year-2007	Contact									
Aleut Corporation	President									
Alaska Dept of Fish & Game	Resource Manager									
Alaska Department of Natural Resources	Natural Resource Manager									
Alaska Maritime National Wildlife Refuge	Dept of the Interior-Regional Environmental Officer									
Tanadgusix Corporation	President									
St. George Tanaq Corporation	President									
City of St. Paul	Mayor									
City of St. George	Mayor									
Native Allotments	Dept of the Interior-Regional Environmental Officer									
ID Number	25-D	26-D	27-D	28-D	29-D	30-D	31-D	79-S	80-S	
Location	57°14.84'N 170°10.88'W	57°08.46'N 170°18.74'W	57°08.05'N 170°13.58'W	57°07.32'N 170°17.64'W	56°34.10'N 169°42.40'W	56°37.11'N 169°33.61'W	56°33.10'N 169°30.83'W	57°07.63'N 170°16.95'W	56°34.21'N 169°39.92'W	
Maximum Vessel Size	Deep draft, greater than 20,000 Gross Tons							Shallow draft- 300 Gross Tons and less		
Type of Berthing	Anchorage							Dock		
Contact	N/A							Harbor Master 907.859.2711	Harbor Master 907.859.2263	
Navigational Approach	Approach from N	Approach from SW	Approach from the SE, E	Approach from the W	Approach from the S, SE	Approach from the N,E,W	Approach from the S, E, NE	Approach from the W	Approach from the W	
Minimum Water Depths	60 Feet in the swing area	33 Feet in swing area	30 Feet in the swing area	30 Feet in the swing area	60 Feet in the swing area	12 Fathoms in the swing area	60 Feet in the swing area	18 Feet at the Dock Face		
Maximum Water Depth	12 Fathoms in swing area	42 Feet in the swing area	42 Feet in the swing area	42 Feet in the swing area	25 Fathoms in the swing area	22 Fathoms in the swing area	27 Fathoms in the swing area	18 Feet at the Dock Face		
Maximum Vessel Draft	50 ft.	30 ft.	25 ft.			60 ft.	60 ft.	12 ft.		
Swing Room/Dock Face	3600 ft.	1800 ft.	2100 ft.	1200 ft.	3000 ft.	2400 ft.	3600 ft.	200 ft. Dock Face	75 ft. Dock Face	
Bottom Type	Sand, Rocky	Sand, Rocky	Mud, Sand	Sand						N/A
Docks/Piers	Nearest Alt. Dock 06-D Dutch Harbor APL Dock							Nearest Alt. 80-S St. George Harbor	Nearest Alt. 79-S St. Village Cove Harbor	
Anchorage	Nearest Alt. Anchorage-26-D English Bay	Nearest Alt. Anchorage-28-D Zolitoi Bay		Nearest Alt. Anchorage-26-D English Bay	Nearest Alt. Anchorage--31-D Garden Cove	Nearest Alt. Anchorage--31-D Garden Cove	Nearest Alt. Anchorage 30-D North Anchorage	Nearest Alt. Anchorage-28-D English Bay	Nearest Alt. Anchorage 31-D North Anchorage	
Prevailing Winds	Winter-North, Northeast, Summer-Northeast. Winds are highly variable and frequent gales occur in the area.									
Currents	Currents are tidal influenced and drift in a circular motion around both islands. Currents are no more than 1.5 kts. max									
Tides	Mean High Water-3.0 (Higher- 3.2) , Mean Low Water- 1.0 (Lower- -2.5)									
Sea Conditions	Exposed to swell from the N, E, W	Exposed to swell from the S	Exposed to swell from the E, S	Exposed to swell from the W, S	Exposed to SE swell	Exposed to swell from the S,W	Exposed to swell from the S, E	Sheltered		
Shelter from Severe Storms	Sheltered from S storms	Sheltered from SE,E,N storms	Sheltered from N, W storms	Sheltered from N,E storms	Exposed to SE storms	Sheltered from storms from the N, E	Sheltered from storms from the N, W	Sheltered		
Fog	Fog is frequent and severe in all seasons.									
Sea ice	Sea ice occurs in large detached fields and November-March. It may present hazards to vessels navigation.									

NOTE: Sensitive resource information can be found on other maps which can be accessed through the sensitive area section of the Aleutian Subarea Contingency Plan: <http://www.akrrt.org/AIPlan/aitoc.shtml>