



Location of NE-18



Rob and Lowe Rivers, View east

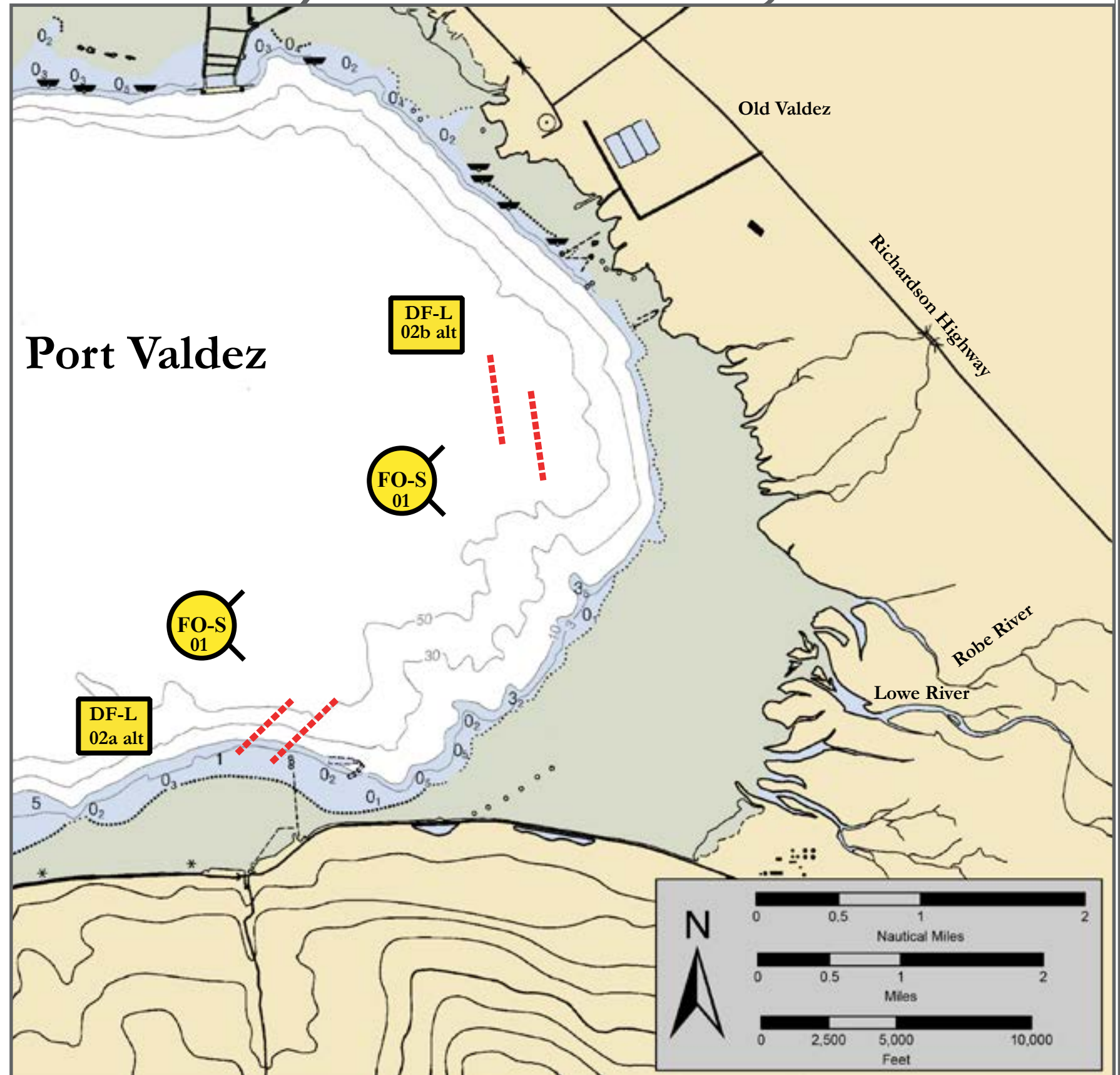
Map  
& Photo

# Legend

	Free-oil Skimming and Recovery, Shallow water
	Deflection Booming, Live
	Protected-water Boom

## Geographic Response Strategies for Prince William Sound Subarea, Northeast Zone



# Robe/Lowe Rivers, NE-18



Map is not intended for navigational use.

Lat. 61° 5' 34.3" N  
Lon. 146° 14' 54.6" W

Depths in Fathoms

ID	Location and Description	Response Strategy	Implementation	Response Resources	Staging Area	Site Access	Resources Protected (months)	Special Considerations
NE-18-01 	<b>Lowe and Robe Rivers</b>  Nearshore waters in the general area of:  Lat. 61° 07.49' N Lon. 146° 28.67' W	<b>Free-oil Recovery</b>  Maximize free-oil recovery in the offshore & nearshore environment Lowe and Robe Rivers depending on spill location and trajectory.	Deploy free-oil recovery strike teams upwind and up current of Lowe and Robe Rivers.  Use aerial surveillance to locate incoming slicks.	Deploy multiple free-oil recovery strike teams as required to maximize interception of oil before it impacts sensitive areas.	Valdez	Via marine waters  Chart 16707-1	Same as NE-18-02	Vessel master should have local knowledge.  REPORT any cultural resources found during operations to FOSC Historic Properties Specialist.
NE-18-02 	<b>Lowe and Robe Rivers</b>  a. Lat. 61° 06.57' N Lon. 146° 16.89' W  Or  b. Lat. 61° 05.50 N Lon. 146° 17.81 W	<b>Deflection-Live</b>  Deflect oil from the shoreline near the Lowe and Robe Rivers and back into the channel for collection using live deflection.	Transport equipment to site by marine vessel (class 3/4).  Position the arrays depending on oil trajectory (a) or (b) are displayed for demonstration. Hold in place using fishing vessels and skiffs (3/4/6).  Place two 300ft. protected-water booms cascaded arrays at adequate angle to deflect oil from Lowe and Robe Rivers and nearby shoreline and set up for near shore free oil recovery.  Tend throughout the tide.	<b>Deployment Equipment</b> 600 ft. protected-water boom <b>Vessels</b> 4 ea. Class 3/4/6  <b>Personnel/Shift</b> 12 ea. Vessel crew  <b>Tending Vessels</b> 4 ea. Class 3/4  <b>Personnel/Shift</b> 12 ea. Vessel crew	Vessel platform	Via marine waters  Chart 16707-1	<b>Fish-</b> intertidal spawning-salmon  <b>Birds-</b> seabird nesting  <b>Human use-</b> high recreational use	Vessel master should have local knowledge.  Tested: 11 October 2015 SERVS deployment