



Location of NE-38

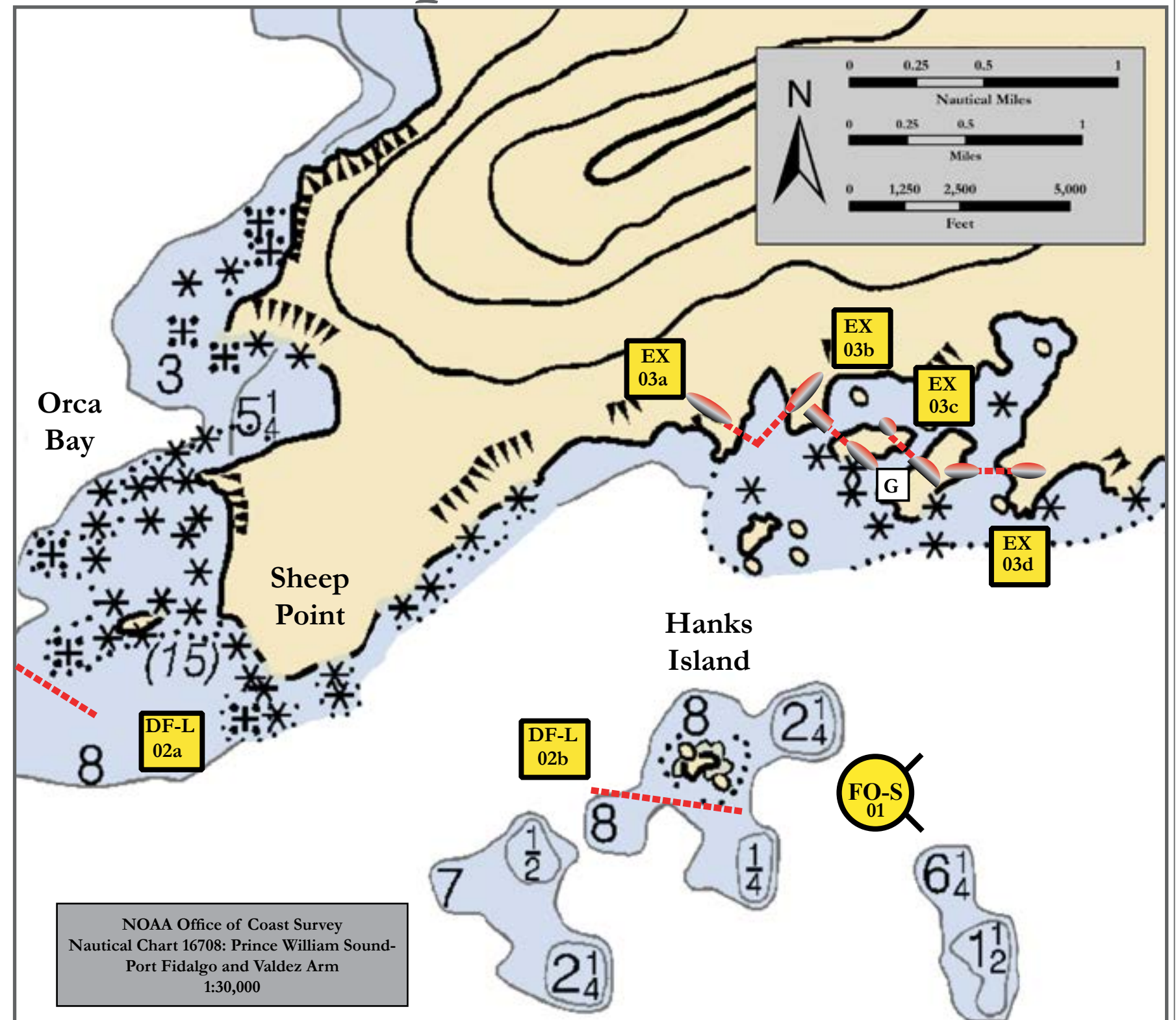


Sheep Point, View northeast

- | | | | |
|--|---|--|----------------------|
| | Free-oil Skimming and Recovery, Shallow Water | | Protected-water Boom |
| | Exclusion Booming | | Shore-seal Boom |
| | Deflection Booming, Live | | Gate System |

Map & Photo Legend

Sheep Point, NE-38






NOAA Office of Coast Survey
Nautical Chart 16708: Prince William Sound-
Port Fidalgo and Valdez Arm
1:30,000

Map is not intended for navigational use.

Lat. 60° 36' 34.9" N
Lon. 146° 0' 15.7" W

Depths in Fathoms

Geographic Response Strategies for Prince William Sound Subarea, Northeast Zone

ID	Location and Description	Response Strategy	Implementation	Response Resources	Staging Area	Site Access	Resources Protected (months)	Special Considerations
NE-38-01 	Sheep Point Nearshore waters in the general area of: Lat. 60° 36.57' N Lon. 146° 00.57' W	Free-oil Recovery Maximize free-oil recovery in the offshore & nearshore environment of Sheep Point depending on spill location and trajectory.	Deploy free-oil recovery strike teams upwind and up current of Sheep Point. Use aerial surveillance to locate incoming slicks.	Deploy multiple free-oil recovery strike teams as required to maximize interception of oil before it impacts sensitive areas.	Cordova Harbor	Via marine waters Chart 16708-1	Same as NE-38-02	Vessel master should have local knowledge. Use extreme caution, shoal waters with numerous reefs and rocks.
NE-38-02 	Sheep Point a. Lat. 60° 36.97' N Lon. 146° 01.31' W Or b. Lat. 60° 36.78' N Lon. 145° 58.97' W	Deflection-Live Deflect oil from Sheep Point and Hank's Island and back into the channel for collection.	For both arrays use 600 ft. protected water boom held in a chevron pattern with fishing vessel (Class 3/4). Position boom at adequate angle to deflect oil from the islands and set up for free oil recovery.	Deployment Equipment 1800 ft. protected-water boom 1 ea. Gate system 18 ea. Medium anchor systems 4 ea. Anchor stakes Vessels 6 ea. Class 3 1 ea. Class 6 Personnel/Shift 14 ea. Vessel crew Tending Vessels 6 ea. Class 3 1 ea. Class 6 Personnel/Shift 14 ea. Vessel crew	Vessel platform	Via marine waters Chart 16708-1	Fish- intertidal spawning-salmon (May-Sept) Habitat- sheltered tidal flats, gravel beaches Birds- waterfowl concentration Marine mammals- seals, otters Human Use- high recreational use, commercial fishing	Vessel master should have local knowledge. Title 41 permitting required from ADNR. Tested: 02 (b) tested 08 October 2014 SERV S GRS deployment. Surveyed: 03(a) and 03(c) surveyed by vessel 08 October 2014.
NE-38-03 	Alice Cove a. Lat. 60° 37.39' N Lon. 145° 58.52' W b. Lat. 60° 37.40' N Lon. 145° 58.33' W c. Lat. 60° 37.32' N Lon. 145° 58.16' W d. Lat. 60° 37.30' N Lon. 145° 57.75' W	Exclusion Exclude oil from impacting the intertidal areas and salmon stream.	Deploy anchors and boom with skiff (class 6). For arrays (a), (b), and (c) place 50 ft. sections of tidal seal boom on each shore. For array (d) replace tidal seal boom with 100 feet of protected water boom on the east end shore. For (a) place a 500 ft. section of protected-water boom in a chevron pattern in the small cove adjacent to Alice Cove. The remaining arrays are deployed directly across the openings to Alice Cove. Tend throughout the tide. Place gate system in one array to facilitate access to the cove. <u>Boom Lengths:</u> a. 500 ft. b. 400 ft. c. 300 ft. d. 600 ft.	Deployment Equipment 1800 ft. protected-water boom 400 ft. tidal-seal boom 10 ea. Small anchor systems 16 ea. Anchor stakes Vessels/Personnel/Shift Same as NE-38-02 Tending Vessels/Personnel/Shift Same as NE-38-02	Vessel platform	Via marine waters Chart 16708-1	Same as NE-38-02	Vessel master should have local knowledge. Title 41 permitting required from ADNR. Tested: 03(b) and 03 (d) deployed 08 October 2014 SERV S deployment.