

Location of NE-11

Map
& Photo
Legend

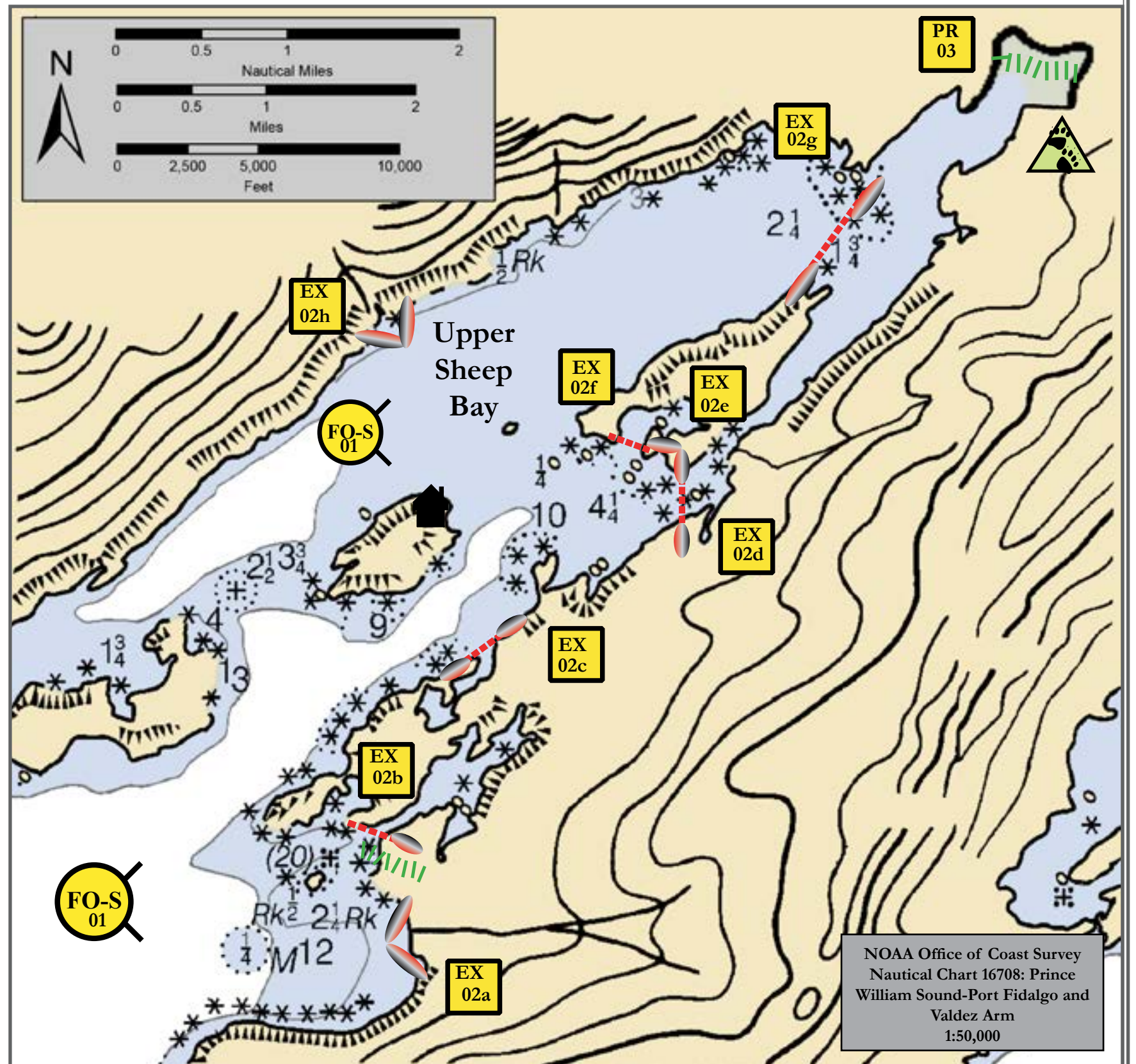


Upper Sheep Bay, View northeast

- | | |
|---|----------------------|
| Free-oil Skimming and Recovery, Shallow Water | Snare Boom |
| Exclusion Booming | Protected-water Boom |
| Passive Recovery | Shore-seal Boom |
| Bears in Area, Guards Needed | Cabin |

Geographic Response Strategies for Prince William Sound Subarea, Northeast Zone

Upper Sheep Bay, NE-11




NOAA Office of Coast Survey
Nautical Chart 16708: Prince
William Sound-Port Fidalgo and
Valdez Arm
1:50,000


Map is not intended for navigational use.

Lat. 60° 41' 8.9" N
Lon. 145° 57' 37.9" W

Depths in Fathoms

ID	Location and Description	Response Strategy	Implementation	Response Resources	Staging Area	Site Access	Resources Protected (months)	Special Considerations
NE-11-01 	Upper Sheep Bay Nearshore waters in the general area of: Lat. 60° 39.91' N Lon. 145° 59.48' W	Free-oil Recovery Maximize free-oil recovery in the offshore & nearshore environment of Upper Sheep Bay depending on spill location and trajectory.	Deploy free-oil recovery strike teams upwind and up current of Upper Sheep Bay. Use aerial surveillance to locate incoming slicks.	Deploy multiple free-oil recovery strike teams as required to maximize interception of oil before it impacts sensitive areas.	Valdez or Cordova	Via marine waters Chart 16708-1	Same as NE-11-02	Vessel master should have local knowledge.

ID	Location and Description	Response Strategy	Implementation	Response Resources	Staging Area	Site Access	Resources Protected (months)	Special Considerations
NE-11-02 <div style="border: 1px solid black; background-color: yellow; padding: 2px; display: inline-block; margin-bottom: 5px;">EX</div>	Upper Sheep Bay a. Lat. 60° 39.85' N Lon. 145° 57.84' W b. Lat. 60° 40.08' N Lon. 145° 58.02' W c. Lat. 60° 40.57' N Lon. 145° 57.41' W d. Lat. 60° 40.97' N Lon. 145° 56.28' W e. Lat. 60° 41.15' N Lon. 145° 56.46' W f. Lat. 60° 41.19' N Lon. 145° 56.56' W g. Lat. 60° 41.87' N Lon. 145° 55.21' W h. Lat. 60° 41.52' N Lon. 145° 57.95' W	Exclusion Exclude oil from impacting the intertidal areas, marsh and streams in Upper Sheep Bay.	Transport equipment by vessel (class 2/3/4). Deploy anchors and boom with fishing vessels and skiffs (class 3/4/6). Use tidal-seal boom exclusively for array (a). Use protected-water boom exclusively on arrays (d) and (h). Use tidal-seal and protected-water boom on the remaining arrays as indicated. Place 50 ft. snare line or sorbent boom on the beach at (b). Deploy array (h) at high tide. Tend throughout the tide. <u>Boom Length:</u> a. 2x 150 ft. tidal seal b. 100 ft. tidal seal, 400 ft. protected-water boom, 50 ft. snare line or sorbent boom. *Several rock patches are visible only at low tide. Response teams cannot safely enter area without significant local knowledge. c. 2x 100 ft. tidal seal, 300 ft. protected-water boom d. 2x 50 ft. tidal seal, 900 ft. protected-water boom *There are several submerged rocks in this area and response vessel must use extreme caution. One rock in particular is in the immediate proximity of the boom and should be marked with a temporary buoy. Response vessel must exercise extreme caution. e. 100 ft. tidal seal f. 50 ft. intertidal boom, 600 ft. protected-water boom *Intertidal boom should be placed on west end. g. 250 ft. tidal seal, 1700 ft. protected-water boom *Rocky and challenging to access, particularly on northeast shore. h. 100 ft. protected-water boom	Deployment Equipment 3900 ft. protected-water boom 1150 ft. tidal-seal boom 50 ft. snare line or sorbent boom 30 ea. Anchor systems (~20 lbs.) 27 ea. Anchor stakes Vessels 1 ea. Class 2 1 ea. Class 3/4 2 ea. Class 6 Personnel/Shift 10 ea. Vessel crew Tending Vessels 1 ea. Class 3/4 1 ea. Class 6 Personnel/Shift 3 ea. Vessel crew	Vessel platform	Via marine waters Chart 16708-1 Title 41 permitting required from AKDNR.	Fish- intertidal spawning-salmon, herring Birds- eagle nest (May-Sept.), waterfowl nesting Habitat- marsh, sheltered rocky shoreline Marine Mammals- sea otters, seals Human use- Subsistence	Vessel master should have local knowledge. FOSC Historic Properties Specialist should MONITOR site during operations. Site surveyed: 02h, 02g, 02b surveyed 10 October 2014 SERVS deployment. Tested: 02f, 02d deployed 10 October 2014 SERVS deployment.

ID	Location and Description	Response Strategy	Implementation	Response Resources	Staging Area	Site Access	Resources Protected (months)	Special Considerations
NE-11-03 	Upper Sheep Bay Lat. 60° 42.32' N Lon. 145° 54.16' W	Passive Recovery At high tide, place passive recovery on the tidal flats.	Transport equipment by vessel class 2/3/4). At or near high tide place and anchor snare line or sorbent boom across the tidal flats using skiffs (class 6). Replace as necessary to maximize the recovery.	Deployment Equipment 1200 ft. snareline or sorbent boom 8 ea. Anchor stakes Vessels/Personnel/Shift Same as NE 11-02 Tending Vessels/Personnel/Shift Same as NE 11-02	Vessel platform	Via marine waters Chart 16708-1 Title 41 permitting required from AKDNR.	Same as NE-11-02	Use snare line for persistent oils and sorbent boom for non-persistent oils.