

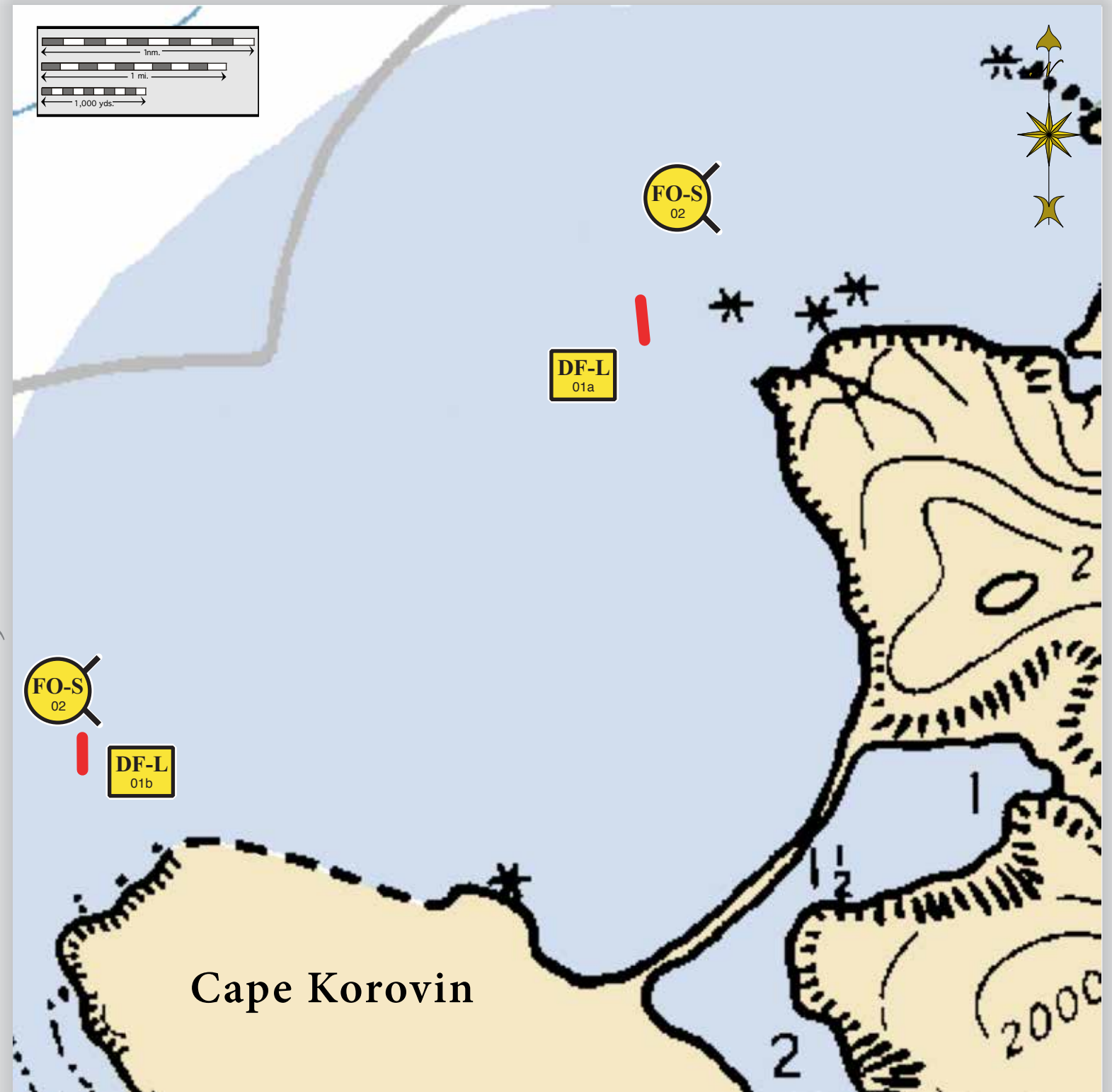
**Map Legend**

- Free-oil Recovery
- Deflection Booming, Live
- Open-water Boom

**Geographic Response Strategies for Aleutian Subarea, West A Zone**

**North Cape to Cape Korovin, AWA-05**

Center of map at 52° 23.00' N Lat., 174° 21.24' W Lon.



This is not intended for navigational use.

ID	Location and Description	Response Strategy	Implementation	Response Resources	Staging Area	Site Access	Resources Protected (months)	Special Considerations
AWA-05-01 <b>DF</b>	<b>North Cape to Cape Korovin-Atka</b> a. Lat. 52° 24.019'N Lon. 174° 18.384'W b. Lat. 52° 19.370'N Lon. 174° 27.698'W  Placement of the boom array is dependant on oil trajectory. Aerial survey is recommended.	<b>Deflection-Live</b> Using vessels to position and hold boom in place to deflect oil coming towards North Cape and Cape Korovin-Atka to open water for free-oil recovery.	Position and hold boom using suitable vessels (class 3-4).  Position 2 x 300 ft. of open-water boom at a proper angle to deflect oil from North Cape and Cape Korovin-Atka to free-oil recovery strike teams.	<b>Deployment Equipment</b> 600 ft. open-water boom <b>Vessels</b> 4 ea. class 3/4 <b>Personnel/Shift</b> 12 ea. vessel crew <b>Tending Vessels</b> 4 ea. class 3 <b>Personnel/Shift</b> 12 ea. vessel crew	Vessel Platform	Via marine waters Chart 16480_1	Marine mammals: sea lion, sea otter, seal  Birds: waterfowl concentrations, seabird nesting area  Habitat: exposed rocky shore, gravel beach	Vessel master should have local knowledge.  Site surveyed- Not surveyed.  Tested- Not yet.
AWA-05-02 <b>FO-S</b>	<b>North Cape to Cape Korovin-Atka</b> Nearshore waters in the general area of:  Lat. 52° 24.472'N Lon. 174° 18.393'W	<b>Free-oil Recovery</b> Maximize free-oil recovery in the offshore & nearshore environment of North Cape to Cape Korovin-Atka depending on spill location and trajectory.	Deploy free-oil recovery strike teams upwind and up current of North Cape to Cape Korovin-Atka.  Use aerial surveillance to locate incoming slicks.	Deploy multiple free-oil recovery strike teams as required to maximize interception of oil before it impacts sensitive areas.	Atka- 24 nm	Via marine waters Chart 16480_1	Same as AWA-05-01	Vessel master should have local knowledge.