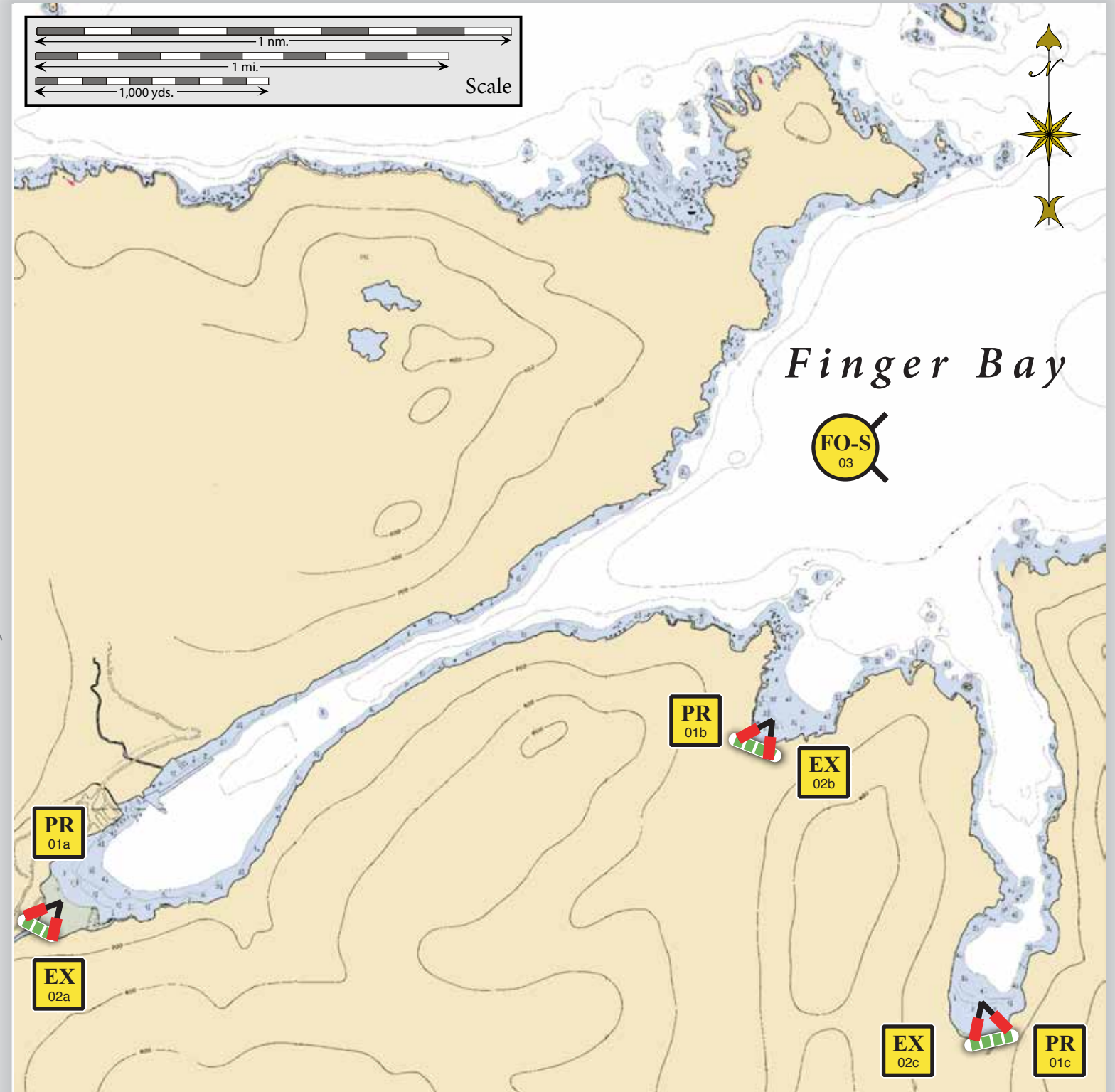
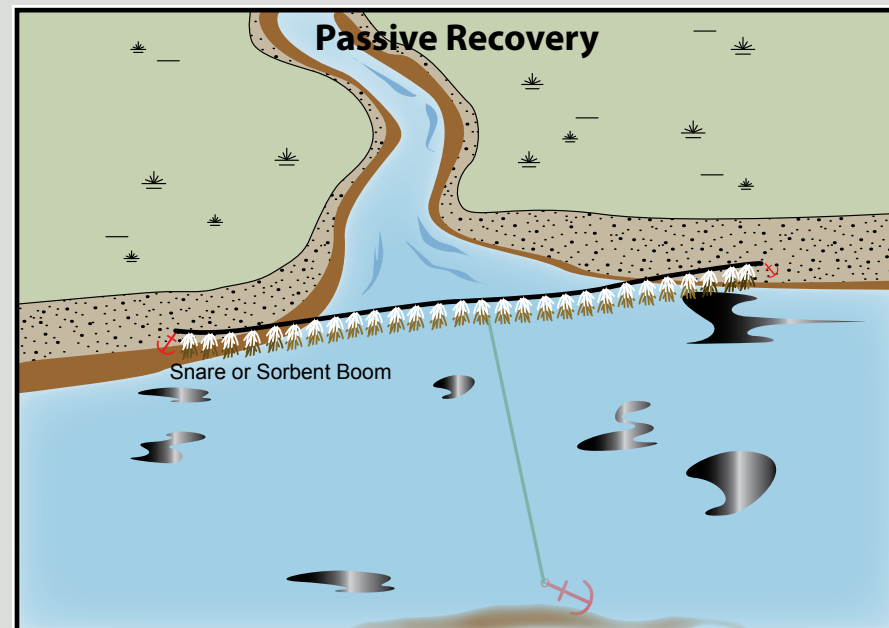
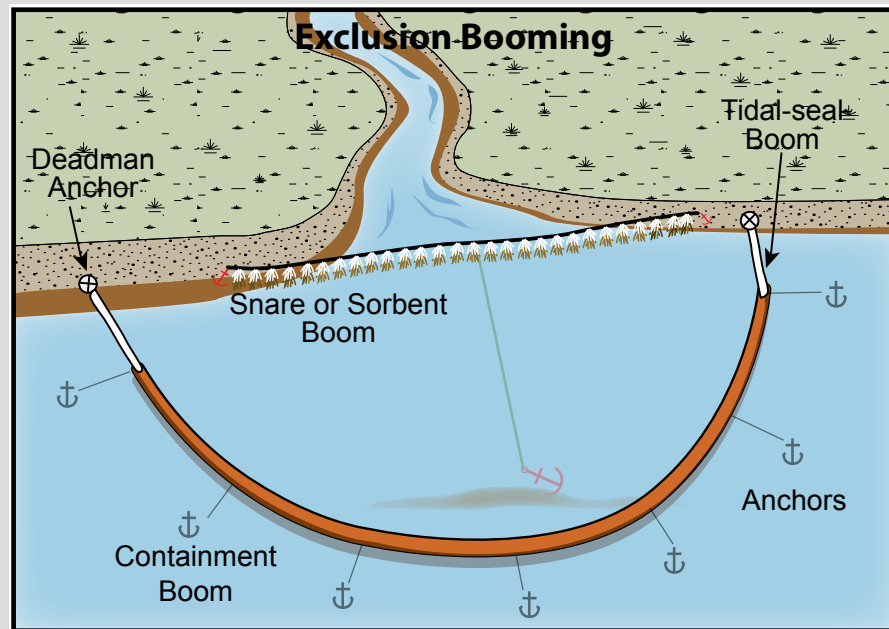


Finger Bay, AWA-13

Center of map at 51° 50.63' N Lat., 176° 35.16' W Lon.



This is not intended for navigational use.



Map Legend

- Free-oil Recovery
- Exclusion Booming
- Passive Recovery
- Fast-water/Harbor Boom
- Snare or Sorbent Boom

Geographic Response Strategies for Aleutian Subarea, West A Zone

ID	Location and Description	Response Strategy	Implementation	Response Resources	Staging Area	Site Access	Resources Protected (months)	Special Considerations
AWA-13-01 PR	Finger Bay Same locations as AWA-13-02	Passive Recovery Use passive recovery for rapid deployment prior to oil impacts and the arrival of hard boom. Place passive recovery boom across the entrance to the salmon streams in Finger Bay. Move the boom to maximize the protection of the salmon streams.	Place and anchor snare line or sorbent boom across the identified creek mouths. Move to arrays further back into the streams if the sea state precludes deployment. Replace as necessary to maximize the recovery. <u>Boom Lengths:</u> a. 150 ft. b. 150 ft. c. 100 ft.	Deployment Equipment 400 ft. snare line or sorbent boom 3 ea. small anchor systems 12 ea. anchor stakes Vessels 1 ea. class 3 2 ea. class 6 Personnel/Shift 4 ea. vessel crew Tending Vessels 2 ea. class 6 Personnel/Shift 4 ea. vessel crew	Vessel Platform	Via marine waters Chart 16476	Same as AWA-13-02	Vessel master should have local knowledge. Title 16 permitting required from ADFG. Title 41 permitting required from ADNR
AWA-13-02 EX	Finger Bay a. Lat. 51° 49.774'N Lon. 176° 37.821'W b. Lat. 51° 50.129'N Lon. 176° 35.525'W c. Lat. 51° 49.521'N Lon. 176° 34.758'W	Exclusion Exclude oil from impacting the streams in Finger Bay.	Deploy anchors and boom with skiffs (class 6). Exclude the entrance to the streams with fast-water/calm-water boom. Place the boom in front of passive recovery boom in a chevron pattern extending into the ocean. If the sea state precludes this location, deploy further back in the stream. Tend throughout the tide.	Deployment Equipment 400 ft. fast-water/calm-water boom 3 ea. small anchor systems 12 ea. anchor stakes Vessels/Personnel/Shift Same as AWA-13-01 Tending Vessels/Personnel/Shift Same as AWA-13-01	Vessel Platform	Via marine waters Chart 16476	Marine mammals-sea otter Fish – chum salmon, coho salmon, pink salmon, sockeye salmon Habitat- Exposed Rocky Shoreline, Gravel Beach	Vessel master should have local knowledge. Fast-water boom is specified for logistical consideration. Larger boom may be used if available. Site Survey- Surveyed 7/21/2015 Tested- Not yet
AWA-13-03 FO-S	Finger Bay Nearshore waters in the general area of: Lat. 51° 50.675'N Lon. 176° 35.116'W	Free-oil Recovery Maximize free-oil recovery in the offshore & nearshore environment of Finger Bay depending on spill location and trajectory.	Deploy free-oil recovery strike teams upwind and up current of Finger Bay. Use aerial surveillance to locate incoming slicks.	Deploy multiple free-oil recovery strike teams as required to maximize interception of oil before it impacts sensitive areas.	Vessel Platform	Via marine waters Chart 16476	Same as AWA-13-02	Vessel master should have local knowledge.