

Yukon Island West, KB-08 as viewed from the West.

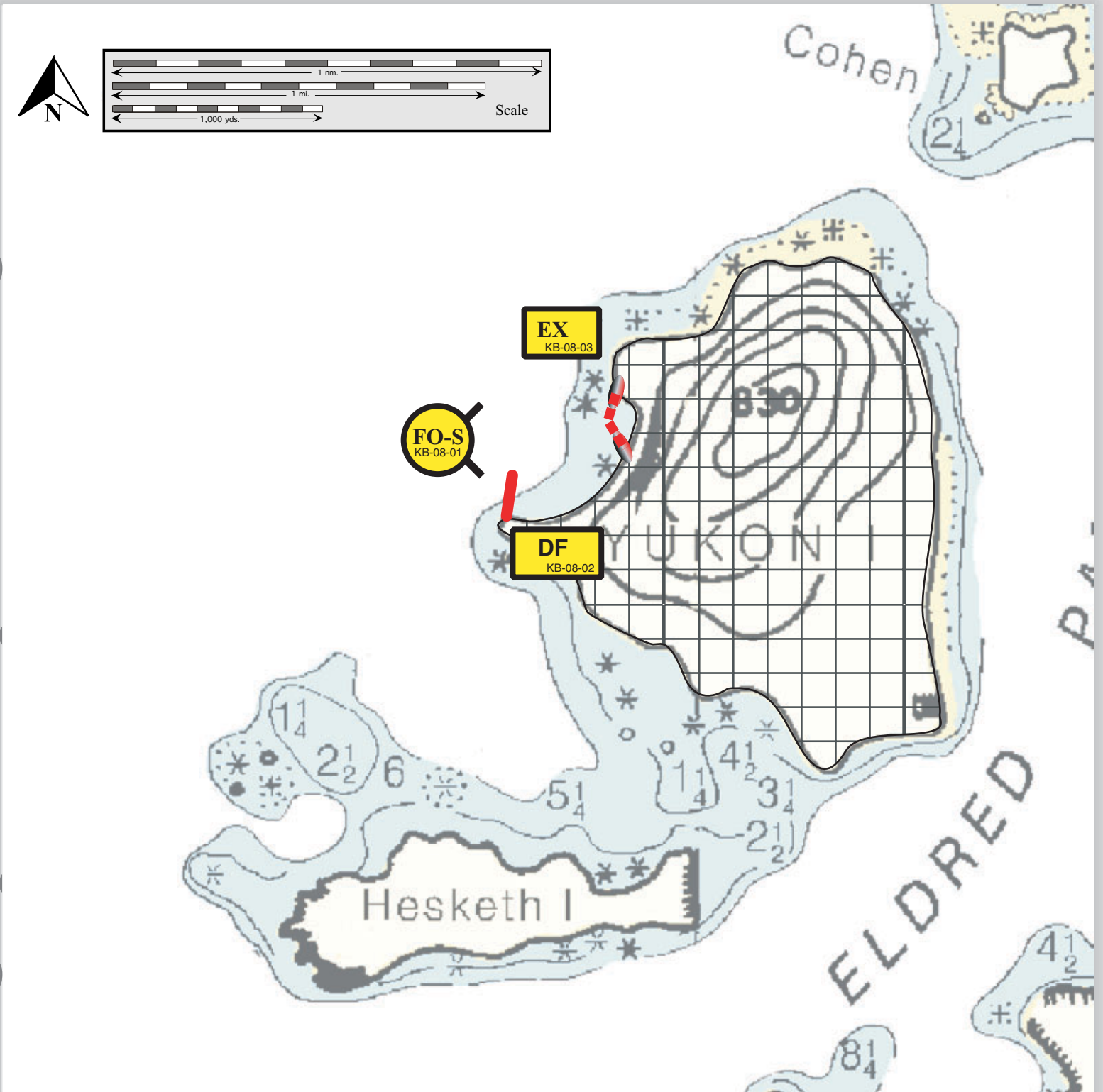
Map & Photo  
Legend

	Free-oil Containment and Recovery, Shallow Water
	Exclusion Booming
	Deflection Booming, Fixed
	Protected-water Boom
	Open-water Boom
	Shore-seal Boom
	Responders Restricted from this Area

Geographic Response Strategies for

# Yukon Island West, KB-08

Center of map at 59° 31.3' N Lat., 151° 30.6' W Lon.



This map is not intended to be used for navigation.

Soundings in fathoms

	Location and Description	Response Strategy	Implementation	Response Resources	Staging Area	Site Access	Resources Protected (months)	Special Considerations
KB-08-01	<b>Yukon Island West</b> Nearshore waters in the general area of: Lat. 59° 31.3 N Lon. 151° 30.6 W	<b>Nearshore Free-oil Recovery</b> Maximize free-oil recovery in the offshore & nearshore environment outside the cove on the west side of Yukon Island. Concentrate on oil deflected by KB-08-02.	Deploy nearshore free-oil recovery strike teams upwind and up current of the cove on the west side of Yukon Island. Use aerial surveillance to locate incoming slicks.	Multiple nearshore free-oil recovery strike teams as required to maximize interception of oil before it impacts sensitive areas.	Homer Harbor or vessel platform	Via marine waters. See NOAA chart 16645-1.	Same as KB-08-02	FOSC Historic Properties Specialist should MONITOR on-site operations.
KB-08-02	<b>Yukon Island West Point</b> Yukon Island is the largest of three islands on the south side of Kachemak Bay, including Cohen and Hesketh Islands. The passage between Yukon and Hesketh Islands has a 2 fathom shoal in mid channel at both ends. Lat. 59 31.4 N Lon. 151° 30.9 W	<b>Deflection</b> Deflect oil from Western point of Yukon Island into current away from shore.	Use class 2 and class 4 vessels with deck space to transport equipment to site, and class 6 setnet or seine skiffs to deploy boom and anchors. Place 600 ft. of open water boom north from the Western point of Yukon Island with large anchor at offshore end.	<b>Deployment Equipment</b> 600 ft. open water boom 1 ea. anchor system (≥60 lbs.) 8 ea. anchor systems (≤40 lbs.)  <b>Vessels</b> 1 ea. class 2 1 ea. class 4 2 ea. class 6  <b>Personnel / Shift</b> 8 ea. vessel crew  <b>Tending Vessels</b> 1 ea. class 4 2 ea. class 6  <b>Personnel/Shift</b> 5 ea. vessel crew	Homer Harbor or vessel platform	Via marine waters. See NOAA chart 16645-1.	Seabird feeding (year-round) Waterfowl concentration area (winter) Seabird nesting (spring, summer) Sea Otters (year-round) Herring spawning (Spring) Harbor seals (year-round)	Vessel captains should have local knowledge. Archaeological site. FOSC Historic Properties Specialist should MONITOR on-site operations.  Tested: No
KB-08-03	<b>Yukon Island West Cove</b> Lat. 59° 31.6 N Lon. 151° 30.3 W	<b>Exclusion</b> Exclude oil from entering cove on west side of Yukon Island.	Place 600 ft. protected-water boom, with shore seal on each end, and a large anchor at apex.	<b>Deployment Equipment</b> 600 ft. protected-water boom 8 ea. anchor systems (≤40 lbs.) 1 ea. anchor system (≥60 lbs.) 100 ft. shore seal boom units 4 ea. anchor stakes  <b>Vessels, Personnel, Tending</b> Use same as KB-08-02	Homer Harbor or vessel platform	Via marine waters. See NOAA chart 16645-1.	Same as KB-08-02	Vessel captains should have local knowledge. FOSC Historic Properties Specialist should MONITOR on-site operations.  Tested: No