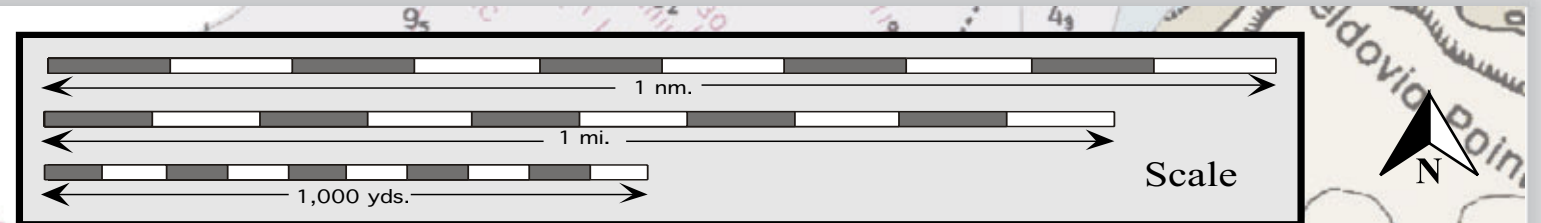




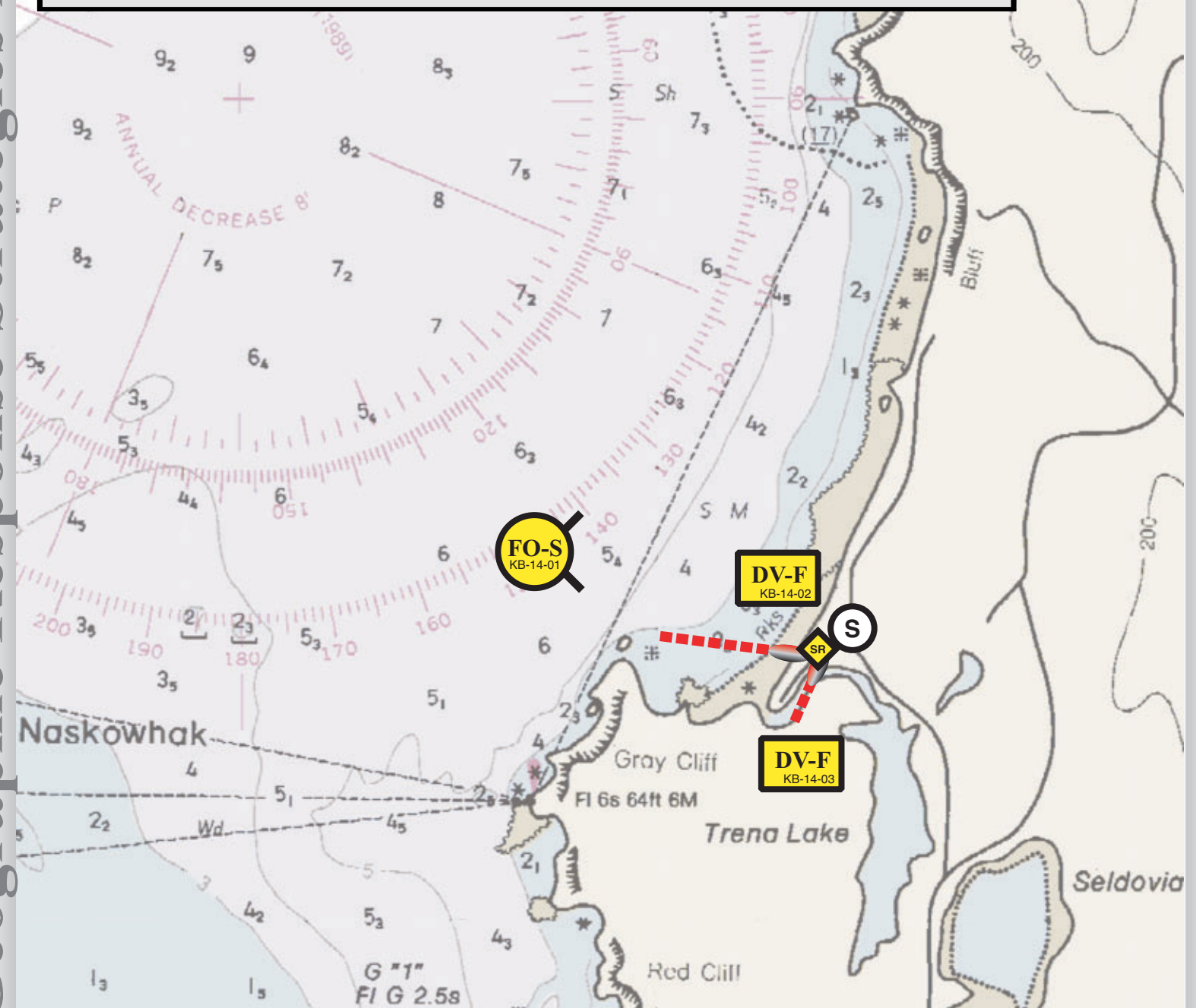
Seldovia Outside Beach, KB-14 as viewed from the North.

Seldovia Outside Beach, KB-14

Center of map at 59° 27.7' N Lat., 151° 43.2' W Lon.



Geographic Response Strategies for



This map is not intended to be used for navigation.

Soundings in fathoms

Map & Photo Legend

- Free-oil Containment and Recovery, Shallow Water
- Diversion Booming
- Shoreside Recovery
- Protected-water Boom
- Shore-seal Boom
- Staging Area

| | Location and Description | Response Strategy | Implementation | Response Resources | Staging Area | Site Access | Resources Protected (months) | Special Considerations |
|----------|--|---|--|---|-------------------------------------|--|--|---|
| KB-14-01 | Seldovia Outside Beach Nearshore waters in the general area of: Lat. 59° 27.7 N Lon. 151° 43.2 W | Nearshore Free-oil Recovery Maximize free-oil recovery in the offshore & nearshore environment outside of Trina Lake. | Deploy nearshore free-oil recovery strike teams upwind and up current of the entrance to Trina Lake Lagoon. Use aerial surveillance to locate incoming slicks. | Multiple nearshore free-oil recovery strike teams as required to maximize interception of oil before it impacts sensitive areas. | Homer Harbor or vessel platform | Via marine waters. See NOAA chart 16645-1. | Same as KB-14-02 | REPORT any cultural resources found during operations to the FOSC Historic Properties Specialist. |
| KB-14-02 | Entrance to Trina Lake Lagoon Outside beach is a gravel beach located on the east side of Seldovia Bay, south of Seldovia Point. The entrance to Trina Lake Lagoon is at the South end of the beach. The channel is dry at most stages of tide and is navigable only by small skiffs at extreme high water. Lat. 59° 27.3 N Lon. 151° 42.9 W | Divert and Collect Divert oil entering Trina Lake Lagoon entrance to recovery site on Outside Beach. | Place 1000 ft. of protected-water boom from White Rocks to shoreside recovery site at Outside Beach. | Deployment Equipment 1000 ft. protected-water boom 12 ea. anchor systems (≤40 lbs.) 1 ea. shoreside recovery unit 1 ea. ATV with trailer Vessels 2 ea. class 6 Personnel / Shift 4 ea. vessel crew Tending Vessels 1 ea. class 6 Personnel / Shift 2 ea. vessel crew | Seldovia City Dock Outside Beach | 1 Mile from Seldovia on Jakolof Bay Road. Turn left on Outside Beach Road. | Marsh Intertidal herring spawning High recreational use Seabird feeding area (year-round) | REPORT any cultural resources found during operations to the FOSC Historic Properties Specialist. Tested: No |
| KB-14-03 | Trina Lake Lagoon Channel Lat. 59° 27.3 N Lon. 151° 42.7 W | Divert and Collect Divert oil entering channel to Trina Lake Lagoon to recovery site on north side of channel. | Place 200 ft. of protected-water boom with shore seal on south end across channel to recovery site on north side of channel. | Deployment Equipment 200 ft. protected-water boom 4 ea. anchor packages (≤40 lbs.) 50 ft. shore seal boom 2 ea. anchor stakes 1 ea. shoreside recovery unit Vessels, Personnel, Tending Same as KB-14-02 | Seldovia City Dock Outside Beach | 1 Mile from Seldovia on Jakolof Bay Road. Turn left on Outside Beach Road. | Same as KB-14-02 | Tested: No |