


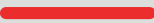




Hoen's Lagoon, KB-17 as viewed from the Southeast.

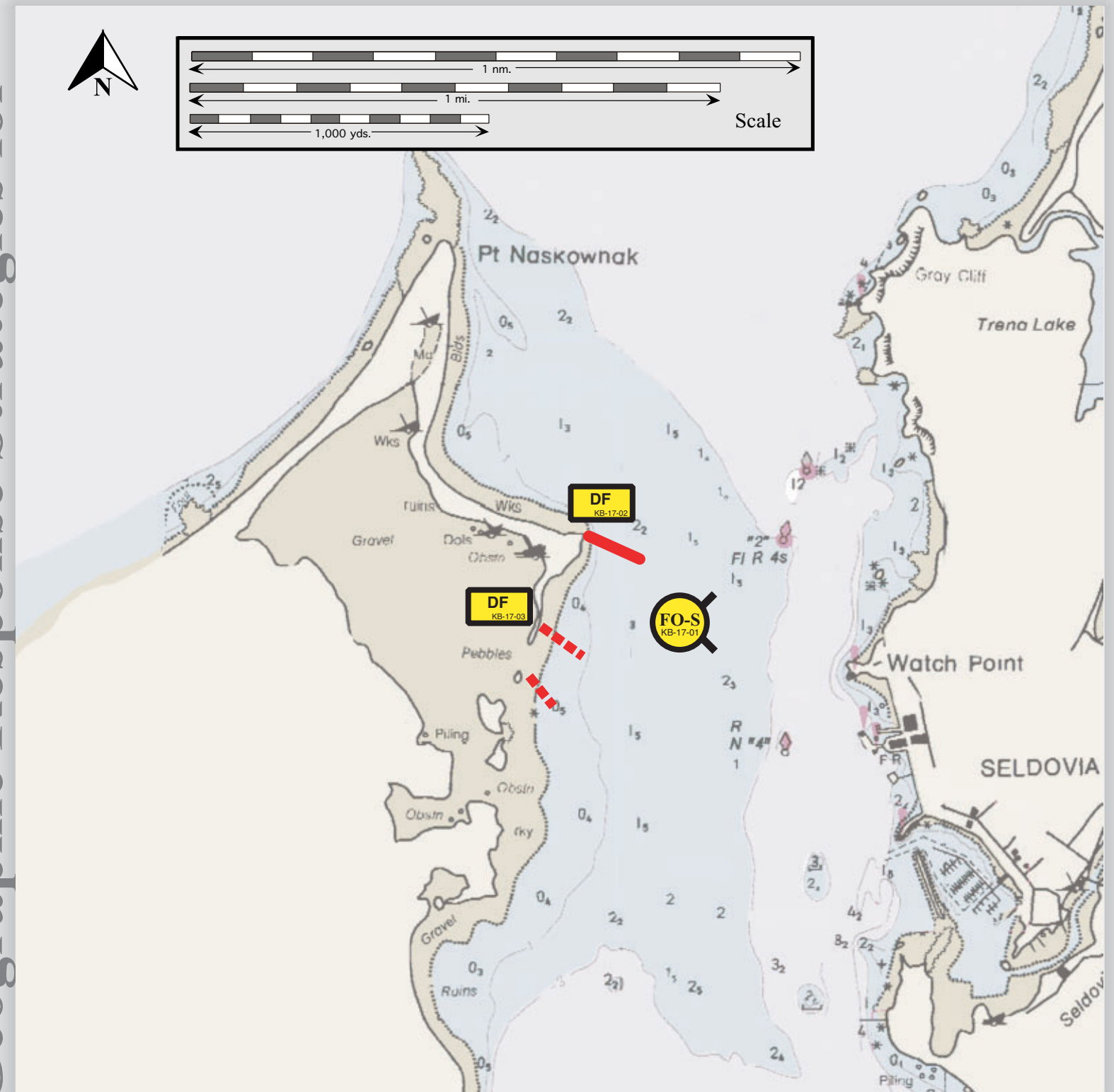
Map
& Photo
Legend

	Free-oil Containment and Recovery, Shallow Water
	Deflection Booming, Fixed
	Protected-water Boom
	Open-water Boom

Hoen's Lagoon, KB-17

Center of map at 59° 26.6' N Lat., 151° 44.0' W Lon.

Geographic Response Strategies for



This map is not intended to be used for navigation.

Soundings in fathoms

	Location and Description	Response Strategy	Implementation	Response Resources	Staging Area	Site Access	Resources Protected (months)	Special Considerations
KB-17-01	Hoen's Lagoon Nearshore waters in the general area of: Lat. 59° 26.6 N Lon. 151° 44.0 W	Nearshore Free-oil Recovery Maximize free-oil recovery in the offshore & nearshore environment outside Hoen's Lagoon. Concentrate on oil deflected by KB-17-02.	Deploy nearshore free-oil recovery strike teams upwind and up current of entrance to Hoen's Lagoon. Use aerial surveillance to locate incoming slicks.	Multiple nearshore free-oil recovery strike teams as required to maximize interception of oil before it impacts sensitive areas.	Seldovia Harbor or vessel platform	Via marine waters. See NOAA chart 16645-1.	Same as KB-17-02	FOSC Historic Properties Specialist should INSPECT site prior to operations.
KB-17-02	Hoen's Lagoon Hoen's Lagoon is located on the west side of Seldovia Bay across from Watch Point. The entrance is narrow, with strong current, and navigable only by skiffs. Lat. 59° 26.7 W Lon. 151° 44.0 W	Deflection Deflect oil into current away from shore.	Use class 2 and class 4 vessels with deck space to transport equipment, and class 6 seine or setnet skiffs to deploy boom and anchors. Place 600 ft. open water boom to deflect oil away from entrance to Hoen's lagoon.	Deployment Equipment 600 ft. protected-water boom 12 ea. anchor systems (≥60 lbs.) Vessels 1 ea. vessel class 2 2 ea. vessel class 4 2 ea. vessel class 6 Personnel / Shift 12 ea. vessel crew Tending Vessels 2 ea. class 6 Personnel 4 ea. vessel crew	Seldovia Harbor or vessel platform	Via marine waters. See NOAA chart 16645-1.	Sea Otters (year-round) Seabird feeding area (year-round) Waterfowl concentration area (winter) Shorebird concentration area (April-May) Sheltered rocky shore Marsh	Private land FOSC Historic Properties Specialist should INSPECT site prior to operations. Tested: No
KB-17-03	Hoen's Lagoon Lat. 59° 26.6 N Lon. 151° 44.2 W	Deflection Deflect oil into current away from shore.	Place 2 ea. 400 ft. protected-water booms in a cascade pattern to deflect oil away from entrance to Hoen's lagoon.	Deployment Equipment 800 ft. protected-water boom 16 ea. anchor systems (≤40 lbs.) Vessels, Personnel, Tending Same as KB-17-02	Seldovia Harbor or vessel platform	Via marine waters. See NOAA chart 16645-1.	Same as KB-17-02	Private land FOSC Historic Properties Specialist should INSPECT site prior to operations. Tested: No