



EX01c & EX01d viewed from the south.



◀ EX01 viewed from the east.



EX01c & EX01d viewed from the northwest.

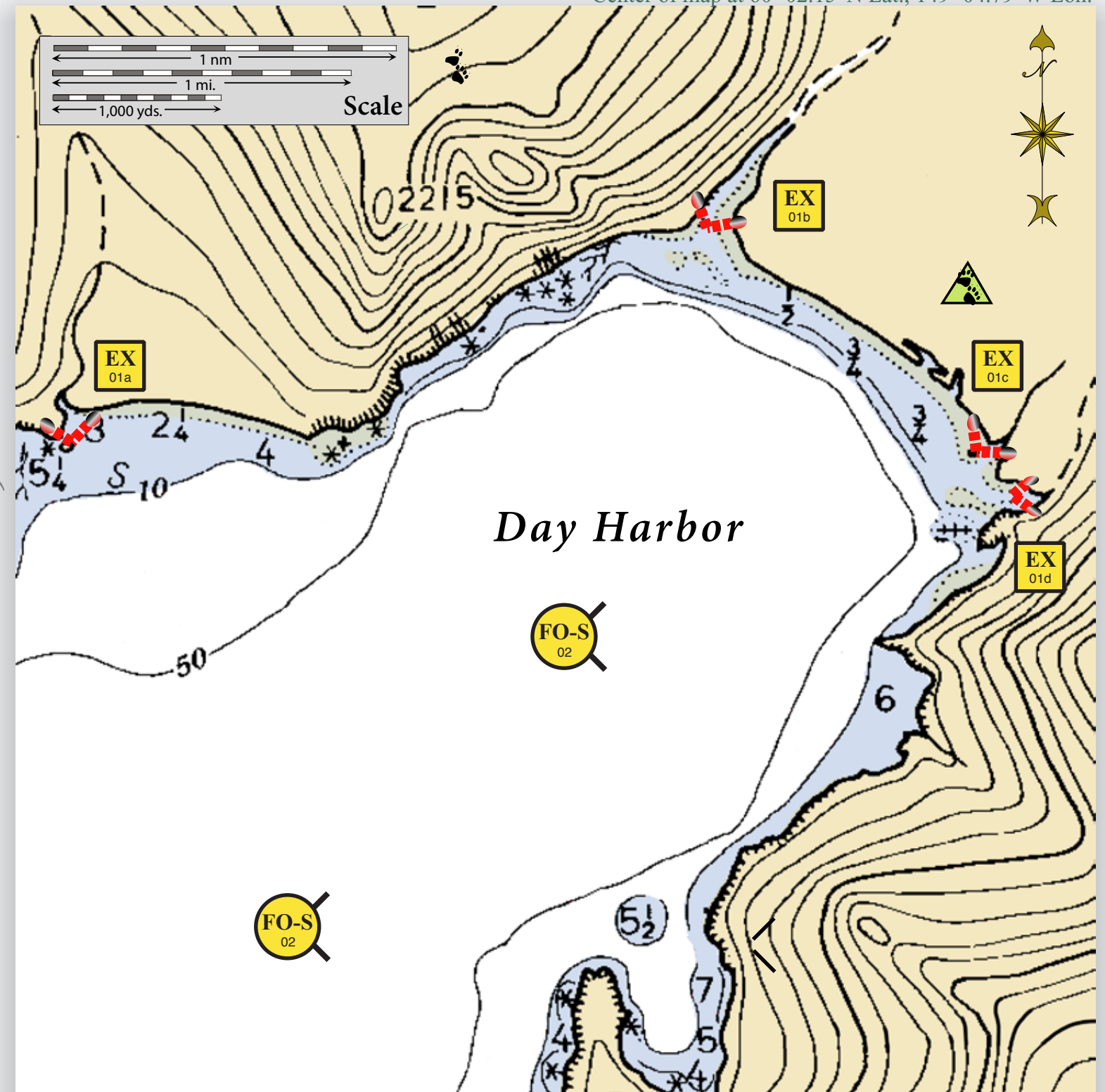


◀ EX01 viewed from the southeast.

Geographic Response Strategies for
COOK INLET Subarea, Seward Zone

Head of Day Harbor, SZ-33



Center of map at 60° 02.15' N Lat., 149° 04.79' W Lon.



This is not intended for navigational use.

Map
Legend

- EX Exclusion Booming
- FO-S Free-oil Recovery
- Protected-water Boom
- Tidal-seal Boom
- Bears in Area, Guards Recommended

time	Location and Description	Response Strategy	Implementation	Response Resources	Staging Area	Site Access	Resources Protected (months)	Special Considerations
SZ-33-01 	Head of Day Harbor a. Lat. 59° 02.74 N Lon. 149°07.46 W b. Lat. 59° 03.36 N Lon. 149°03.53 W c. Lat. 59° 02.54 N Lon. 149°02.07 W d. Lat. 59° 02.49 N Lon. 149°01.94 W	Exclusion Exclude oil from impacting the streams located at the back Day Harbor.	Deploy anchors and boom with skiffs (class 6). Place tidal-seal boom on each shore across the intertidal zone. Complete with protected-water boom in chevron pattern across the stream entrances. Tend throughout the tide. <u>Boom Lengths:</u> a. 300 ft. b. 600 ft. c. 400 ft. d. 350 ft.	Deployment Equipment 1650 ft. protected-water boom 8 section 60 ft. tidal-seal boom 8 ea. anchor systems 16 ea. anchor stakes Vessels 1 ea. class 3 2 ea. class 6 Personnel/Shift 7 ea. vessel crew/general techs Tending Vessels 1 ea. class 3 1 ea. class 6 Personnel/Shift 3 ea. vessel crew	Vessel platform	Via marine waters Chart 16681-1	Fish- intertidal spawning-salmon, herring Habitat-shelter rocky shores, gravel beach Marine mammals- otters Human use- commercial fishing, high recreational use	Vessel master should have local knowledge. Title 16 permitting required from ADFG. Title 41 permitting required from ADNR. A large population of bears are in the area. Bear guard required. Site surveyed: not yet Tested: not yet
SZ-33-02 	Head of Day Harbor Nearshore waters in the general area of: Lat. 59° 02.41 N Lon. 149°04.06 W	Free-oil Recovery Maximize free-oil recovery in the offshore & nearshore environment of Head of Day Harbor depending on spill location and trajectory.	Deploy free-oil recovery strike teams upwind and up current of Day Harbor. Use aerial surveillance to locate incoming slicks.	Deploy multiple free-oil recovery strike teams as required to maximize interception of oil before it impacts sensitive areas.	Seward	Via marine waters Chart 16681-1	Same as SZ-33-01	Vessel master should have local knowledge.