



The Head of Resurrection Bay viewed from the south.



EX01a viewed from the south.



EX01b, PR03e, DV02b, PR03d – all viewed from the south.

Map

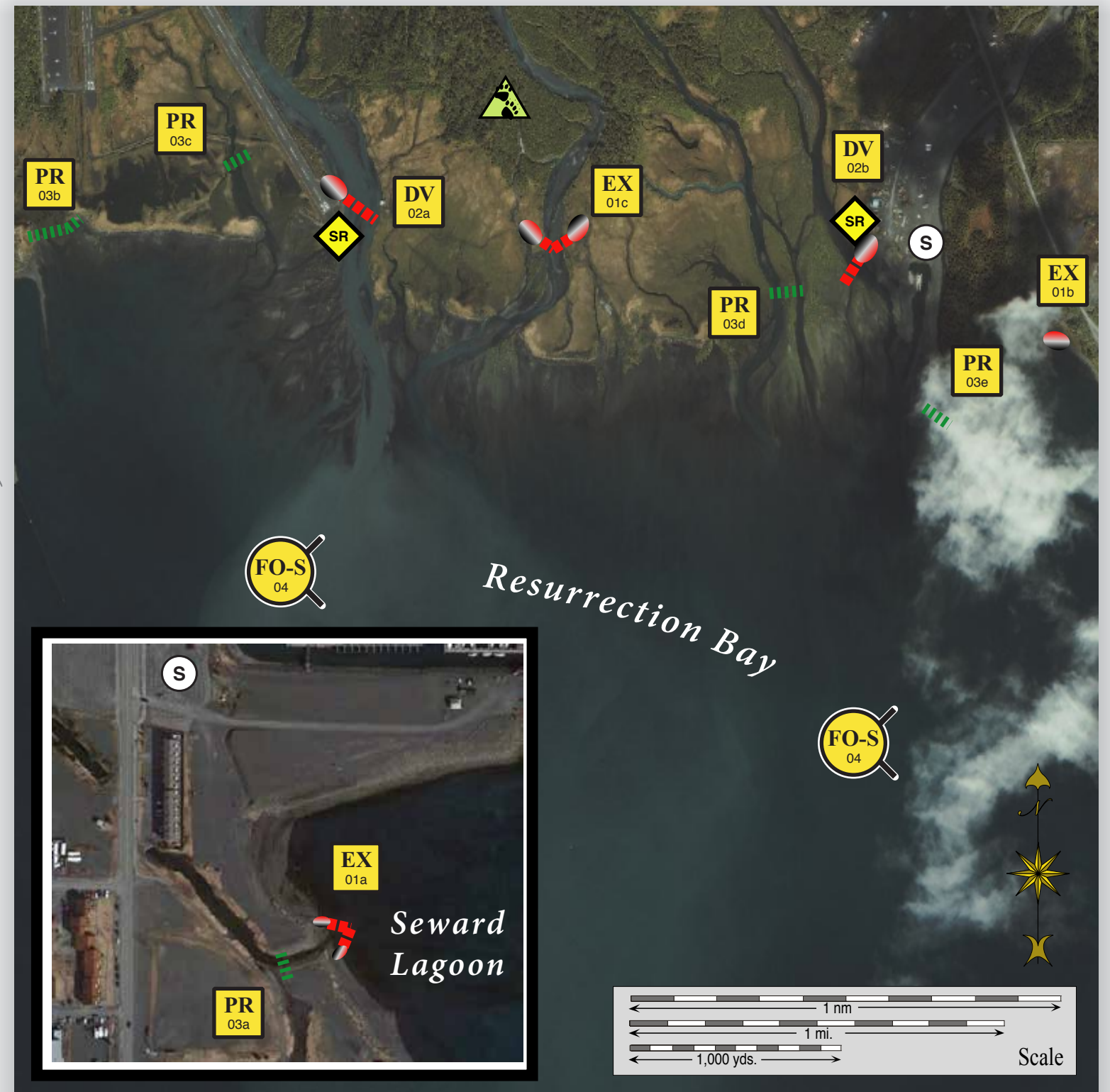
Legend

- EX Exclusion Booming
- PR Passive Recovery
- SR Shoreside Recovery
- DV Diversion Booming
- FO-S Free-oil Recovery
- Tidal-seal Boom
- Snare or Sorbent Boom
- Protected-water Boom
- S Staging Area
- Bears in Area, Guards Recommended

Geographic Response Strategies for COOK INLET Subarea, Seward Zone

Resurrection Bay/Seward Lagoon, SZ-35

Center of map at 60° 06.40' N Lat., 149° 23.95' W Lon.



This is not intended for navigational use.

ID	Location and Description	Response Strategy	Implementation	Response Resources	Staging Area	Site Access	Resources Protected (months)	Special Considerations
SZ-35-01 EX	Head of Resurrection Bay a. Lat. 60° 06.81 N Lon. 149°26.27 W b. Lat. 60° 07.36 N Lon. 149°22.37 W c. Lat. 60° 07.35 N Lon. 149°23.87 W	Exclusion Exclude oil from impacting the streams/river and intertidal area at the Head of Resurrection Bay.	Deploy anchors and boom with inflatable raft or a skiff. For (a) and (c) place 60 ft. of tidal seal boom on each shore. Complete the array with protected water boom in a chevron pattern in front of the entrance to the river and streams. For (b) place 120 ft. of tidal seal boom across the entrance to the creek. Tend throughout the tide. <u>Booms Length:</u> a. 250 ft b. 120 ft. tidal seal boom c. 300 ft.	Deployment Equipment 550 ft. fast-water boom 240 ft. tidal seal boom 4 ea. anchor systems 12 ea. anchor stakes Vessels 1 ea. inflatable raft 2 ea. class 6 Personnel/Shift 4 ea. vessel crew 4 ea. skilled techs Tending Vessels 1 ea. inflatable raft 2 ea. class 6 Personnel/Shift 4 ea. vessel crew 4 ea. skilled techs	Seward Harbor	Via marine waters Chart 16682-1	Fish- intertidal spawning-salmon (May-Sept.) Birds-waterfowl, seabird and shorebird nesting Habitat- Gravel beach, marsh, exposed tidal flats Human use-subsistence, commercial fishing, high recreational use	Vessel master should have local knowledge. Title 16 permitting required from ADFG. Title 41 permitting required from ADNR. Bears are present during fish runs. Bear guard required. Surveyed: 6/29/12 Tested: not yet
SZ-35-02 DV	Head of Resurrection Bay a. Lat. 60° 07.44 N Lon. 149°24.39 W b. Lat. 60° 07.52 N Lon. 149°22.99 W	Divert and Collect Divert oil to shore side collection sites at the specified locations at the Head of Resurrection Bay.	Deploy anchors and boom with skiffs or raft (class 6). Place tidal-seal boom at the shore side collection areas. Complete the array with protected-water boom at the proper angle to divert incoming oil to the collection site. Set up shoreside collection unit and tend throughout the tide. <u>Booms Length:</u> a. 400 ft b. 200 ft	Deployment Equipment 600 ft. protected-water boom 3 ea. anchor systems 4 ea. anchor stakes 2 ea. shore-side recovery system Vessels/Personnel/Shift Same as SZ-35-01 Tending Vessels/Personnel/Shift Same as SZ-35-01	Seward Harbor	Via marine waters Chart 16682-1	Same as SZ-35-01	Vessel master should have local knowledge. Consult the ADEC STAR Manual for tactics to protect the shoreline.
SZ-35-03 PR	Head of Resurrection Bay a. Lat. 60° 06.80 N Lon. 149°26.30 W b. Lat. 60° 07.44 N Lon. 149°25.29 W c. Lat. 60° 07.46 N Lon. 149°24.65 W d. Lat. 60° 07.49 N Lon. 149°23.19 W e. Lat. 60° 07.37 N Lon. 149°22.63 W	Passive Recovery Place passive recovery across entrances to the identified streams at the Head of Resurrection Bay.	For (a) place and anchor snare line or sorbent boom behind the exclusion tactic to capture any oil. For the remaining arrays place and anchor snare line or sorbent boom across the channels of streams at the head of the bay. Replace as necessary to maximize the recovery. <u>Boom Lengths:</u> a. 100 ft b. 350 ft c. 300 ft d. 150 ft e. 200 ft	Deployment Equipment 1100 ft. snare line or sorbent boom 8 ea. small anchor systems 20ea. anchor stakes (Adjust equipment to reflect survey findings) Vessels/Personnel/Shift Same as SZ-35-01 Tending Vessels/Personnel/Shift Same as SZ-35-01	Seward Harbor	Via marine waters Chart 16682-1	Same as SZ-35-01	Vessel master should have local knowledge.
Sz-35-04 FO-S	Head of Resurrection Bay Nearshore waters in the general area of: Lat. 60° 06.89 N Lon. 149°23.96 W	Free-oil Recovery Maximize free-oil recovery in the offshore & nearshore environment of Head of Resurrection Bay depending on spill location and trajectory.	Deploy free-oil recovery strike teams upwind and up current of the Head of Resurrection Bay. Use aerial surveillance to locate incoming slicks.	Deploy multiple free-oil recovery strike teams as required to maximize interception of oil before it impacts sensitive areas.	Seward Harbor	Via marine waters Chart 16682-1	Same as SZ-35-01	Vessel master should have local knowledge. Use extreme caution, shallow waters with shifting channels and bars.

NOTE: Sensitive resource information can be found on other maps which can be accessed through the sensitive area section of the Cook Inlet Sub-Area Contingency Plan: http://dec.alaska.gov/spar/perp/plans/scp_ci.htm.