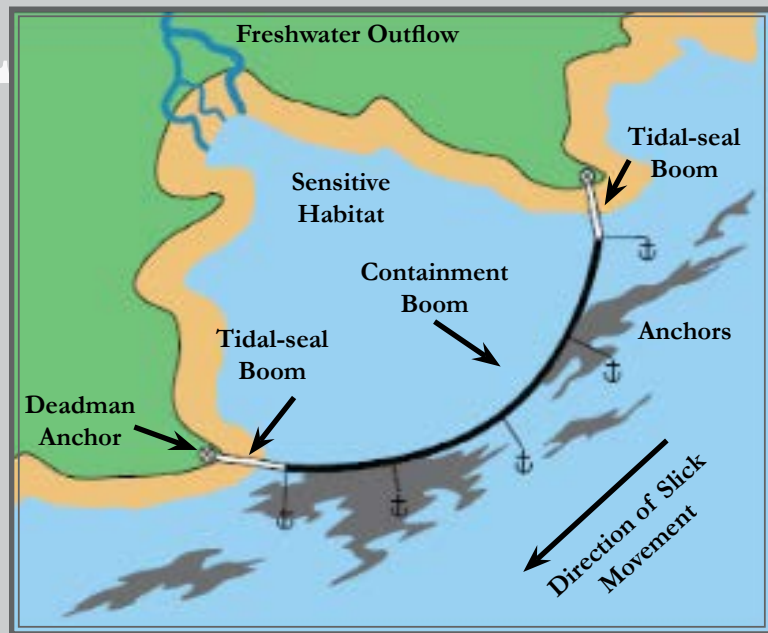




Location of St. Paul Harbor, KE-71

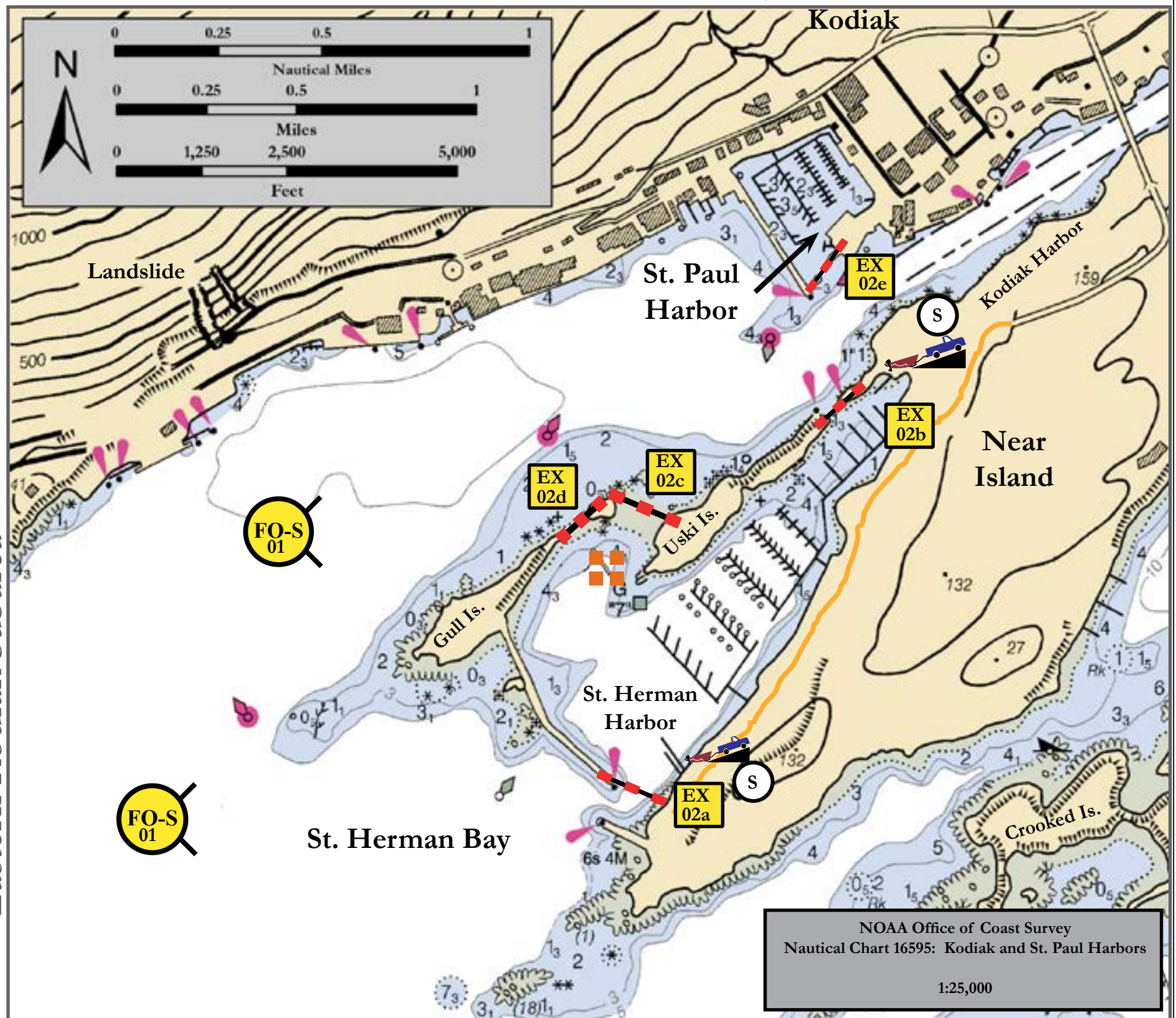


Exclusion Booming Configuration

	Free-oil Recovery, Shallow Water		Stellar Sea Lion Haulout
	Staging Area		Swift-water Boom
	Exclusion Booming		Road
			Boat Ramp

Geographic Response Strategies for Eastern Kodiak Subarea

St. Paul Harbor, KE-71





NOAA Office of Coast Survey
Nautical Chart 16595: Kodiak and St. Paul Harbors
1:25,000

Map is not intended for navigational use.

Lat. 57° 46' 47.9" N
Lon. 152° 25' 20.3" W

Depths in Fathoms

ID	Location and Description	Response Strategy	Implementation	Response Resources	Staging Area	Site Access	Resources Protected (months)	Special Considerations
K-71-01 	St. Paul Harbor Nearshore waters in the general area of: Lat. 57° 46.71' N Lon. 152° 25.82' W	Free-oil Recovery Maximize free-oil recovery in the offshore & nearshore environment of St. Paul Harbor depending on spill location and trajectory.	Deploy free-oil recovery strike teams upwind and up current of St. Paul Harbor. Use aerial surveillance to locate incoming slicks.	Deploy multiple free-oil recovery strike teams as required to maximize interception of oil before it impacts the sensitive areas in St. Paul Harbor.	Vessel Platform	Via marine waters Chart 16595-1	Same as K-71-02	Vessel master should have local knowledge. Use extreme caution, shoal waters with numerous reefs and rocks.
K-71-02 	St. Herman Harbor a. Lat. 57° 46.46' N Lon. 152° 25.02' W b. Lat. 57° 46.94' N Lon. 152° 24.53' W c. Lat. 57° 46.81' N Lon. 152° 24.99' W d. Lat. 57° 46.80' N Lon. 152° 25.13' W St. Paul Harbor e. Lat. 57° 47.11' N Lon. 152° 24.57' W	Exclusion Exclude oil from entering or leaving St. Paul Harbor and St. Herman Harbor.	Using skiffs, place calm-water or harbor boom across the entrances to the harbors. Place boom across the other breaks in the breakwaters. Tend throughout the tide. <u>Boom Lengths:</u> a. 500 ft. b. 250 ft. c. 450 ft. d. 250 ft. e. 350 ft.	Deployment Equipment 1800 ft. calm-water or harbor boom 9 ea. Small anchor systems Vessels 2 ea. Skiffs Personnel/Shift 4 ea. Vessel crew/general tech Tending Vessels 1 ea. Skiff Personnel/Shift 2 ea. Vessel crew/general tech	St. Herman Boat Launch	Via Dog Bay Road Chart 16595-1	Fish- intertidal spawning salmon (May-Sept.), herring (April-May) Birds-waterfowl concentration, seabird nesting Marine mammals- seals, otters, sea lions Habitat-sheltered rocky shoreline Human uses- Commercial fishing, recreation	Vessel master should have local knowledge. Site Surveyed 05/23/08 Tested: No 2b. Anchor chain should be wrapped under large rock and connected with a shackle. Notify harbormaster and MSD about harbor deployments (654-4069) MSD will issue a notice to mariners REPORT cultural resources found during operations to the FOSC Historic Properties Specialist.