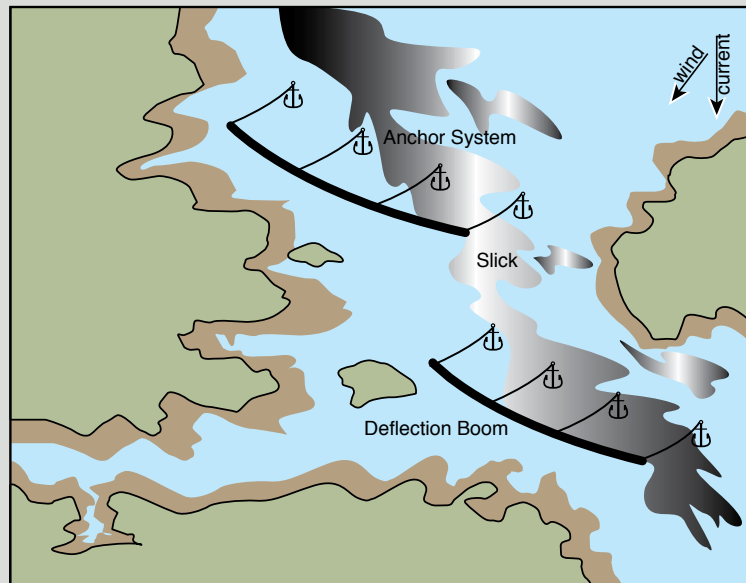


An example of the *Diversion Booming Tactic*. Actual deployment should be adjusted for local conditions.



An example of the *Deflection Booming Tactic*. Actual deployment should be adjusted for local conditions.

Map
Legend

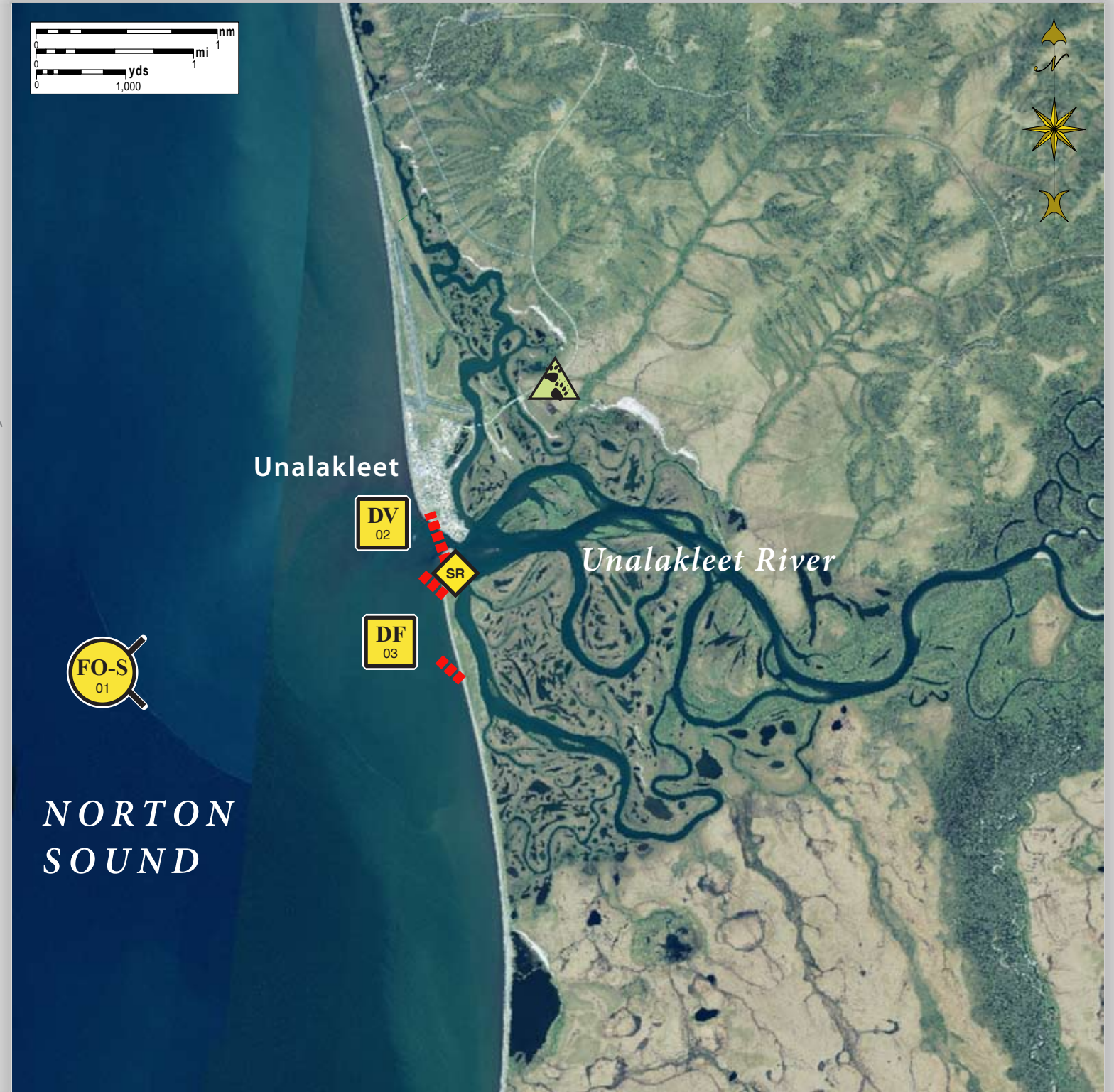
- | | | | |
|--|--------------------|--|-----------------------------------|
| | Free-oil Recovery | | Protected-water Boom |
| | Diversion Booming | | Shoreside Recovery |
| | Deflection Booming | | Bears in Area, Guards Recommended |

Aerial photography of this area is unavailable at this time, but may be included as it becomes available.




Geographic Response Strategies for
Northwest Arctic Subarea, Southern Zone

Unalakleet, NWA-S27

Center of map at 63° 53'15" N Lat., 160° 47'1" W Lon.



This is not intended for navigational use.

ID	Location and Description	Response Strategy	Implementation	Response Resources	Staging Area	Site Access	Resources Protected (months)	Special Considerations
S-27-01 	Unalakleet River Nearshore waters in the general area of: Lat. 63° 51.38 N Lon. 160°52.05 W	Free-oil Recovery Maximize free-oil recovery in the offshore & nearshore environment of Unalakleet River River depending on spill location and trajectory.	Deploy free-oil recovery strike teams upwind and up current of Unalakleet River River. Use aerial surveillance to locate incoming slicks.	Deploy multiple free-oil recovery strike teams as required to maximize interception of oil before it impacts sensitive areas.	Unalakleet	Via marine waters Chart 16200	Same as S-27-02	Vessel master should have local knowledge. Use extreme caution, shoal waters with numerous reefs and rocks.
N-27-02 	Unalakleet River Lat. 63° 52.33'N Lon. 160°47.63'W	Divert and Collect Divert and collect oil and keep it from entering Unalakleet River.	Deploy anchors and boom with skiffs (class 6). Place protected-water boom at proper angle to divert incoming oil to the collection site. Set-up collection site using shore-side collection units or if oil volume is minimal, use sorbent boom or snare line to provide collection of oil. Tend throughout the tide.	Deployment Equipment 1600 ft. protected-water boom 8 ea. small anchor systems 4 ea. anchor stakes 1 ea. shore-side collection units Vessels 2 ea. class 6 Personnel/Shift 4 ea. vessel crew 2 ea. response techs Tending Vessels 2 ea. class 6 Personnel/Shift 4 ea. vessel crew 1 ea. response tech	Unalakleet	Via marine waters Chart 16200	Fish- herring, chinook, chum, coho, pink, sockeye salmon, dolly varden, white fish Birds-seabird nesting Habitat-exposed rocky shoreline, marsh Human use-subsistence, commercial fishing	Vessel master should have local knowledge. Title 41 permitting required from ADNR. FOSC Historic properties specialist should INSPECT site prior to operations. Take appropriate measures as outlined in the STAR Manual to protect the beach at the collection site. Site survey: not surveyed Tested: not yet
S-27-03 	Unalakleet Beach a. Lat. 63° 51.79 N Lon. 160°47.24 W b. Lat. 63° 51.97 N Lon. 160°47.32 W	Deflection Deflect oil moving down the beach out into the ocean back into the channel for free-oil recovery. If natural deflection is sufficient for Free-oil Recovery, or if the array will not be effective, deployment is not necessary.	Deploy boom and anchor system with skiffs (class 6). Position 2 x 600 ft. booms from the beach at a proper angle to deflect oil from Unalakleet Beach. Tend throughout the tide.	Deployment Equipment 1200 ft. protected-water boom 6 ea. anchor systems 4 ea. anchor stakes Vessels/Personnel/Shift Same as S-27-02 Tending Vessels/Personnel/Shift Same as S-27-02	Unalakleet	Via marine waters Chart 16200	Same as S-27-02	A population of bears may be present in the area. A bear guard is required during shore operations. Threatened or endangered species/habitat is present or possible in the area. Consult with NOAA and DOI prior to deployment.

NOTE: Sensitive resource information can be found on other maps which can be accessed through the sensitive area section of the NWA Sub-Area Contingency Plan: http://dec.alaska.gov/spar/perp/plans/scp_nwa.htm.