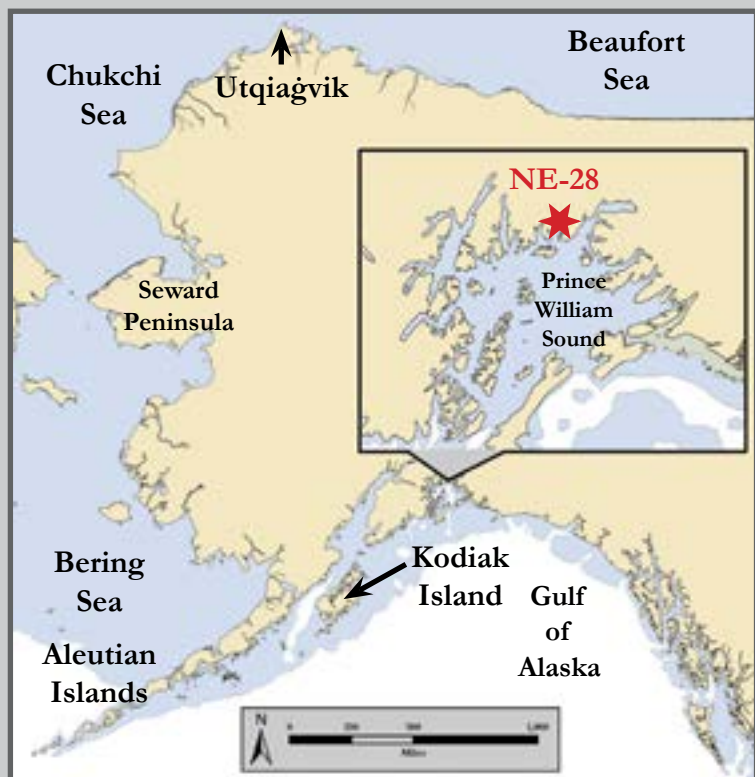


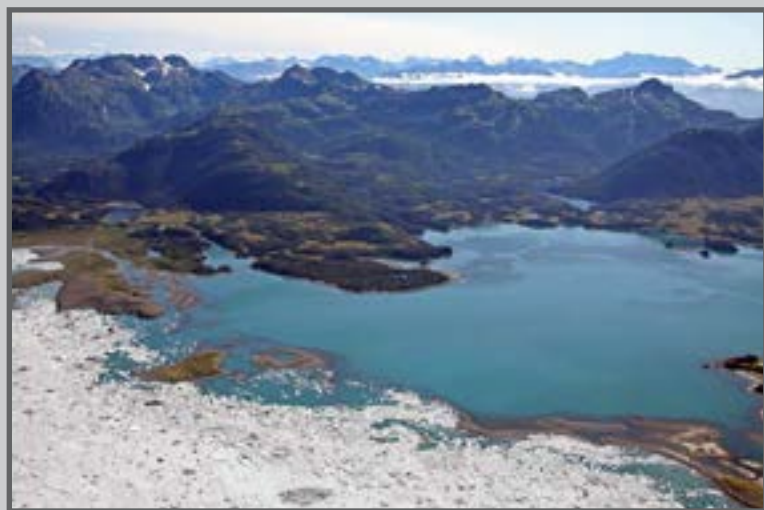
Columbia Bay Island, PWS-NE28






Location of NE-28

Map
& Photo

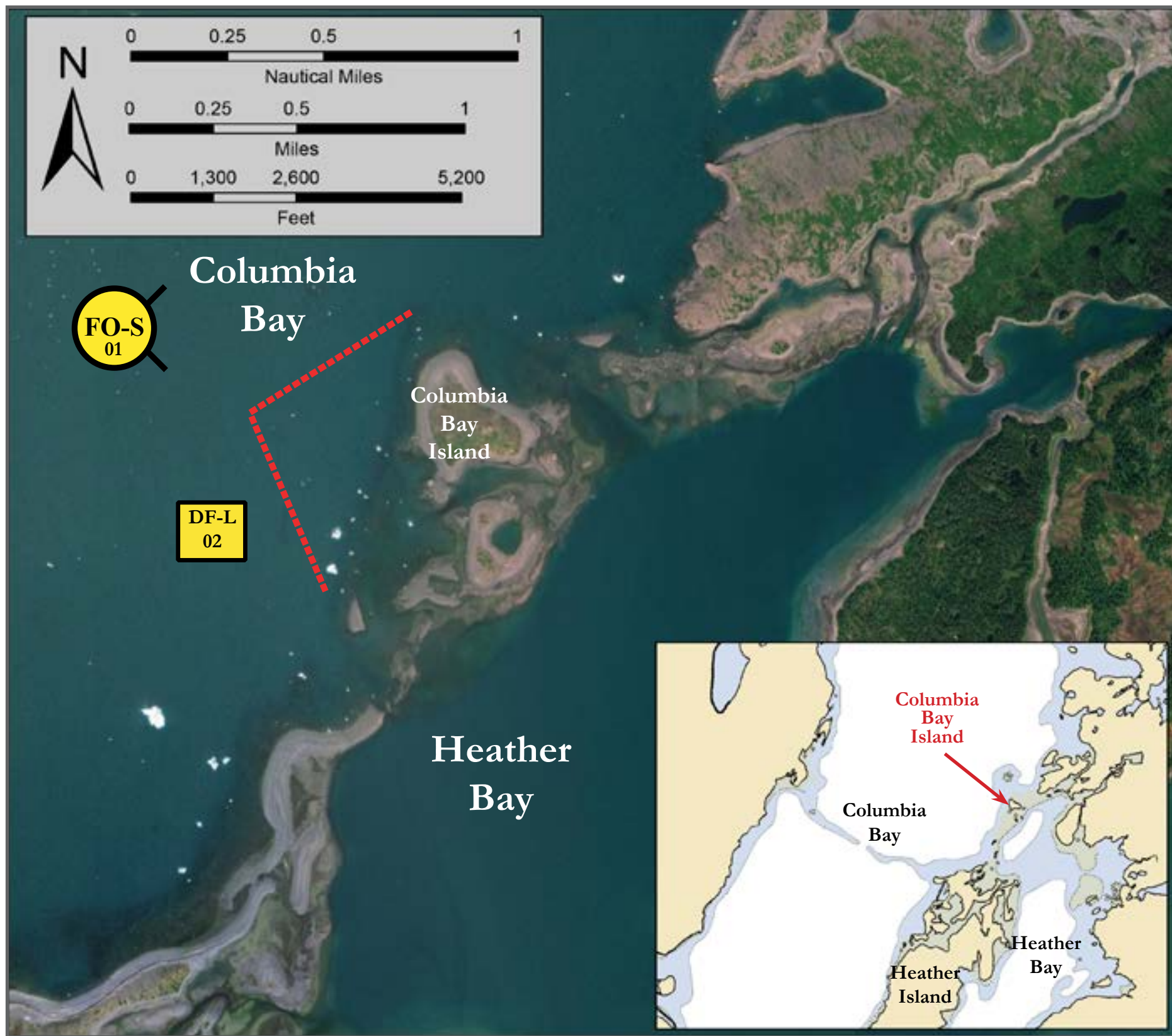
Legend



Columbia Bay Island; View South

-  Free-oil Skimming and Recovery, Shallow Water
-  Deflection Booming-Live
-  Protected-water Boom



Geographic Response Strategies for Northeast Prince William Sound Subarea



Map is not intended for navigational use.

Lat. 61° 01.270' N
Lon. 146° 59.060' W

Depths in Fathoms

ID	Location and Description	Response Strategy	Implementation	Response Resources	Staging Area	Site Access	Resources Protected (months)	Special Considerations
NE-28-01 	Columbia Bay Island Nearshore waters in the general area of: Lat. 61° 02.33' N Lon. 147° 01.016' W	Free-oil Recovery Maximize free-oil recovery in the offshore & nearshore environment of Columbia Bay Island depending on spill location and trajectory.	Deploy free-oil recovery strike teams upwind and up current of Columbia Bay Island. Use aerial surveillance to locate incoming slicks.	Deploy multiple free-oil recovery strike teams as required to maximize interception of oil before it impacts sensitive areas.	Valdez Harbor	Via marine waters Chart 16708-1	Same as NE-28-02	Vessel master should have local knowledge. Use extreme caution, shoal waters with numerous reefs and rocks.
NE-28-02 	Columbia Bay Island a. Lat. 60° 00.219' N Lon. 147° 01.006' W	Deflection-Live Using fishing vessels to hold the boom in place, deflect oil from Columbia Bay Island and back into the channel for free-oil recovery.	Place boom and hold in place with fishing vessel (Class 3/4). Position boom at a proper angle to deflect oil from the island creates by the terminal moraine in Columbia Bay and the nearby rocks. Tend throughout the tide.	Deployment Equipment 1500 ft. protected-water boom Vessels 3 ea. class 3/4 Personnel/Shift 9 ea. vessel crew Tending Vessels 3 ea. class 3/4 Personnel/Shift 9 ea. vessel crew	Vessel platform	Via marine waters Chart 16708-1	Marine mammals- seals, otters Birds- waterfowl concentration, seabird nesting Habitat- sheltered rocky shoreline, gravel beaches	Vessel master should have local knowledge. Vessel master should have local knowledge. This strategy can only be used in calm or moderate conditions and when the glacier ice is in the back of the bay. This island does not appear on current charts. Highly active seabird rookery with thousands of seabirds in the area. Surveyed: 09/07/2017 Tested: 09/07/2017 SERVS deployment