


	Free-oil Recovery		Tidal Seal Boom
	Exclusion Booming		Protected-water Boom

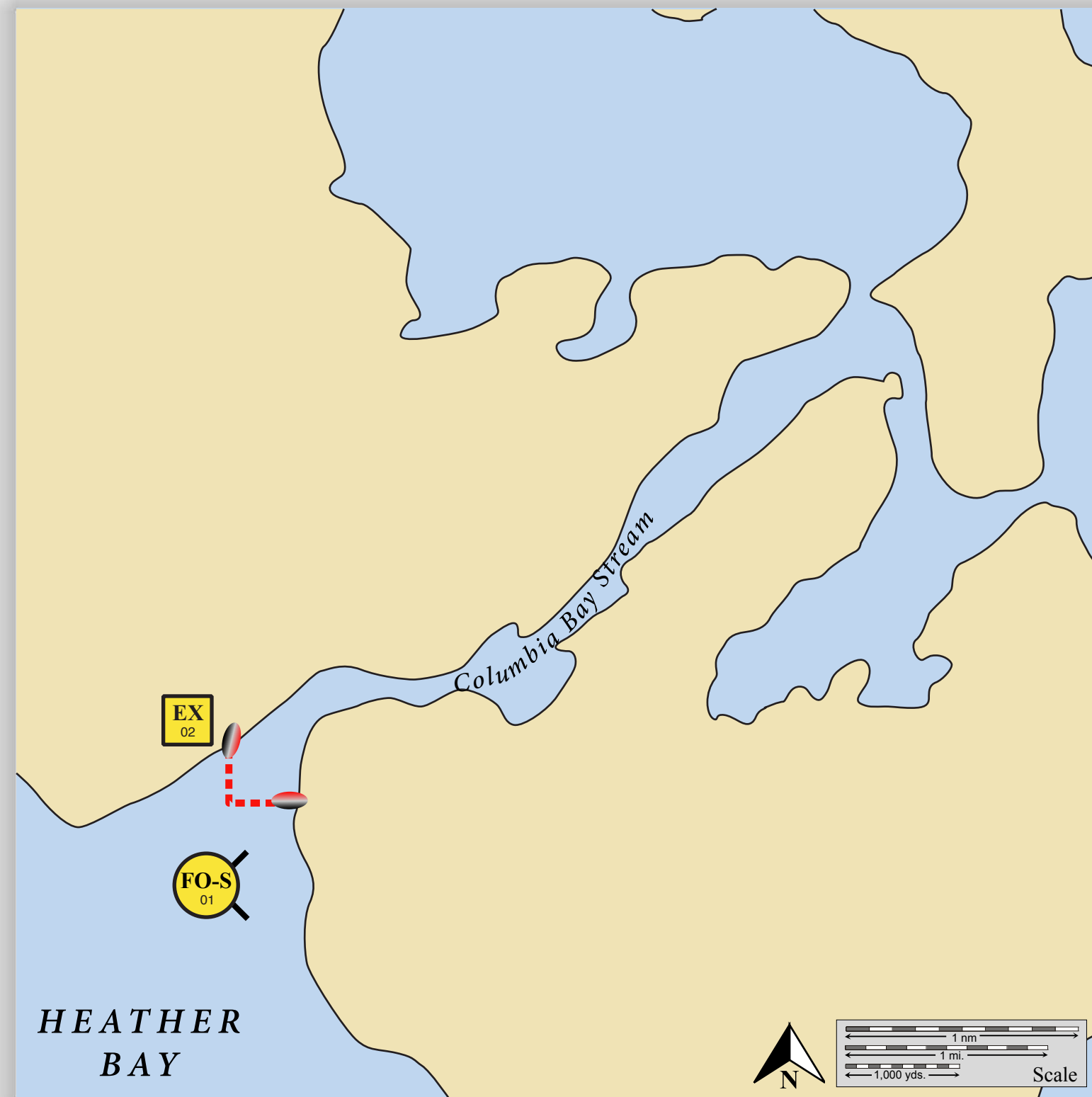


Salmon stream in Columbia Bay viewed from the west.



Geographic Response Strategies for
Northeast Prince William Sound Subarea

Columbia Bay Stream, PWS-NE26

Center of map at 60° 01.2' N Lat., 146° 00.3' W Lon.



This is not intended for navigational use.

ID	Location and Description	Response Strategy	Implementation	Response Resources	Staging Area	Site Access	Resources Protected (months)	Special Considerations
NE-26-01 	Columbia Bay Stream Nearshore waters in the general area of: Lat. 61° 01.2 N Lon. 147°01.5 W	Free-oil Recovery Maximize free-oil recovery in the offshore & nearshore environment of Columbia Bay Stream depending on spill location and trajectory.	Deploy free-oil recovery strike teams upwind and up current of Columbia Bay. Use aerial surveillance to locate incoming slicks.	Deploy multiple free-oil recovery strike teams as required to maximize interception of oil before it impacts sensitive areas.	Valdez Harbor	Via marine waters Chart 16708-1	Same as NE-26-02	Vessel master should have local knowledge. Use extreme caution, glacial ice present navigational hazard. In addition to the shoal waters with numerous reefs and rocks.
NE-26-02 	Columbia Bay Stream Lat. 60° 01.27 N Lon. 146°59.06 W	Exclusion Exclude oil from impacting the stream in Columbia Bay Stream.	If ice conditions prohibit approaching this site via water, transport equipment and personnel by helicopter. Deploy anchors and boom with skiffs (class 6) at high tide. Place the boom far enough back in the channel that ice will not impact the array. Place 50 ft. sections of tidal-seal boom on each shore and complete with 400 ft. section protected-water boom. Place in a chevron formation across the stream. Tend throughout the tide.	Deployment Equipment 600 ft. protected-water or ice boom 100 ft. tidal-seal boom 2 ea. small anchor systems 8 ea. anchor stakes Vessels 1 ea. class 3/4 1 ea. class 6 If ice prevents access 1 ea. helicopter 1 ea. inflatable raft Personnel/Shift 5 ea. vessel crew For helicopter deployment- 2 ea. response techs Tending Vessels 1 ea. class 3/4 1 ea. class 6 Personnel/Shift 3 ea. vessel crew	Vessel platform	Via marine waters Chart 16708-1	Fish- intertidal spawning- salmon (May-Sept.) Birds-waterfowl concentration Marine mammals-otters Habitat- tidal flats, gravel beach	Vessel master should have local knowledge. If ice conditions prevent access, deploy via helicopter. Site Surveyed: Site not accessible during survey Aerial survey required prior to deployment to ensure accessibility. Tested: not yet