






Map & Photo Legend



The entrance to Shelter bay viewed from the west.

-  Free-oil Recovery
-  Shoreside Recovery
-  Tidal-seal Boom
-  Diversion Booming
-  Protected-water Boom

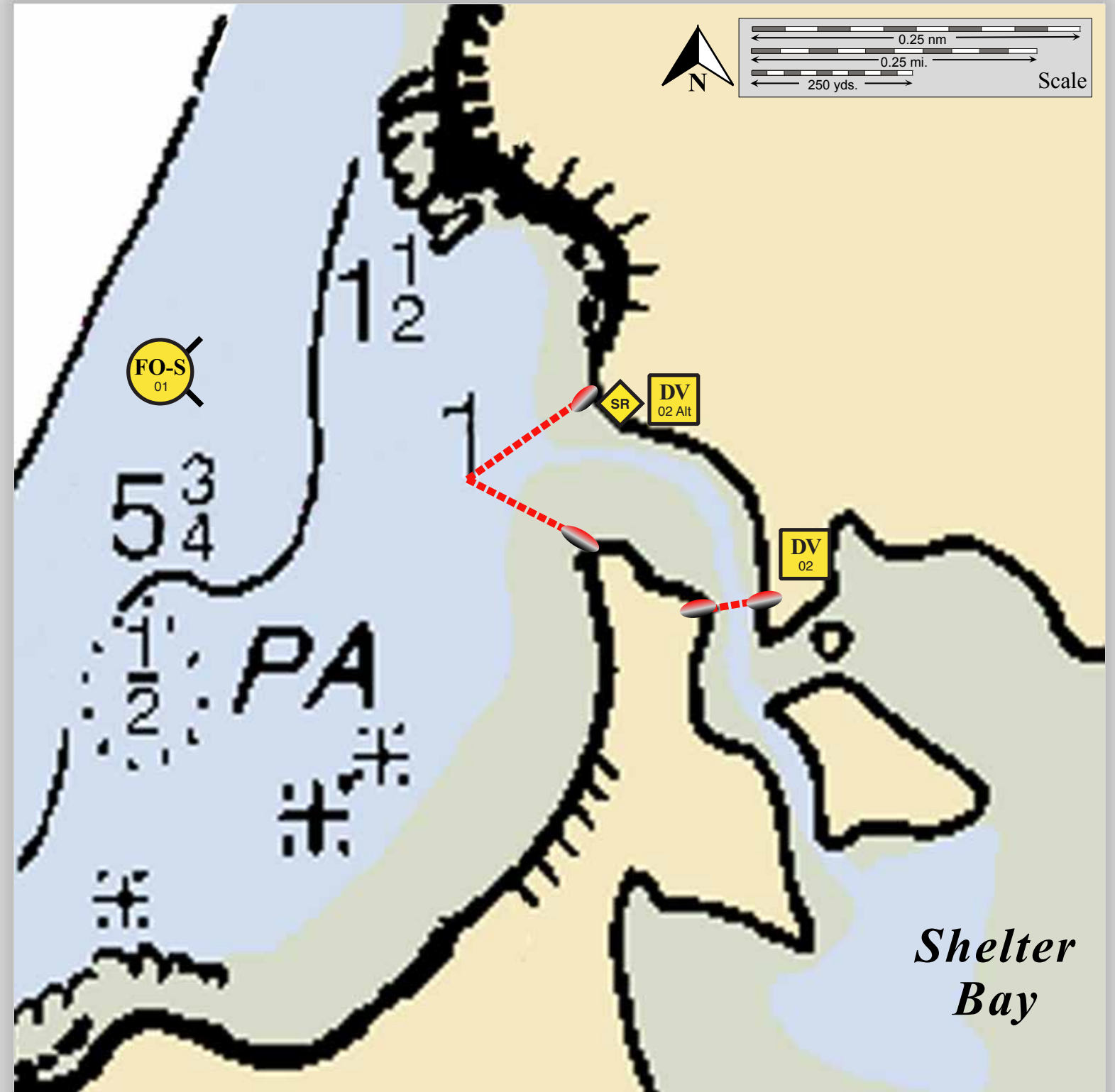


Shelter Bay viewed from the west.



Geographic Response Strategies for Southeast Prince William Sound Subarea

Shelter Bay, PWS-SE13

Center of map at 60° 25.8' N Lat., 146° 39.4' W Lon.



This is not intended for navigational use.

ID	Location and Description	Response Strategy	Implementation	Response Resources	Staging Area	Site Access	Resources Protected (months)	Special Considerations
PWS SE-13-01 	Shelter Bay Nearshore waters in the general area of: Lat. 60° 25.8 N Lon. 146°39.4 W	Free-oil Recovery Maximize free-oil recovery in the offshore & nearshore environment of Shelter Bay depending on spill location and trajectory.	Deploy free-oil recovery strike teams upwind and up current of Shelter Bay. Use aerial surveillance to locate incoming slicks.	Deploy multiple free-oil recovery strike teams as required to maximize interception of oil before it impacts sensitive areas.	Cordova Harbor	Via marine waters Chart 16709-1	Same as SE-13-02	Vessel master should have local knowledge. Use extreme caution, shoal waters with numerous reefs and rocks.
PWS SE-13-02 	Shelter Bay a. Lat. 60° 26.02 N Lon. 146°39.87 W Alternative b. Lat. 60° 25.91 N Lon. 146°39.62 W	Divert and Collect Divert oil to shoreside collection location leading into Shelter Bay. If current is too strong, move the array outside the mouth of the stream if conditions permit.	Deploy anchors and boom with skiffs (class 6). Place 100 ft. sections of tidal-seal boom on each shore. Complete with 1200 ft. protected-water boom at the proper angle to divert incoming oil to the Shoreside collection site. Set up collection site and tend throughout the tide.	Deployment Equipment 1200 ft. protected-water boom 200 ft. tidal-seal boom 6 ea. anchor systems 4 ea. anchor stakes 1 ea. marine collection system/harbor buster Vessels 1 ea. class 3/4 1 ea. class 6 2 ea. response techs Personnel/Shift 5 ea. vessel crew Tending Vessels 1 ea. class 3/4 1 ea. class 6 Personnel/Shift 3 ea. vessel crews 2 ea. response techs	Vessel platform	Via marine waters Chart 16709-1	Fish- intertidal spawning- salmon (May-Sept.) Birds-waterfowl concentration, Marine mammals-otters Human Use- high recreational use, commercial fishing Habitat- marsh, sheltered tidal flats	Vessel master should have local knowledge. Title 41 permitting required from ADNR. A USFS cabin is present in the bay and may provide logistical support. Site Surveyed: 9/04/10 Tested: not yet