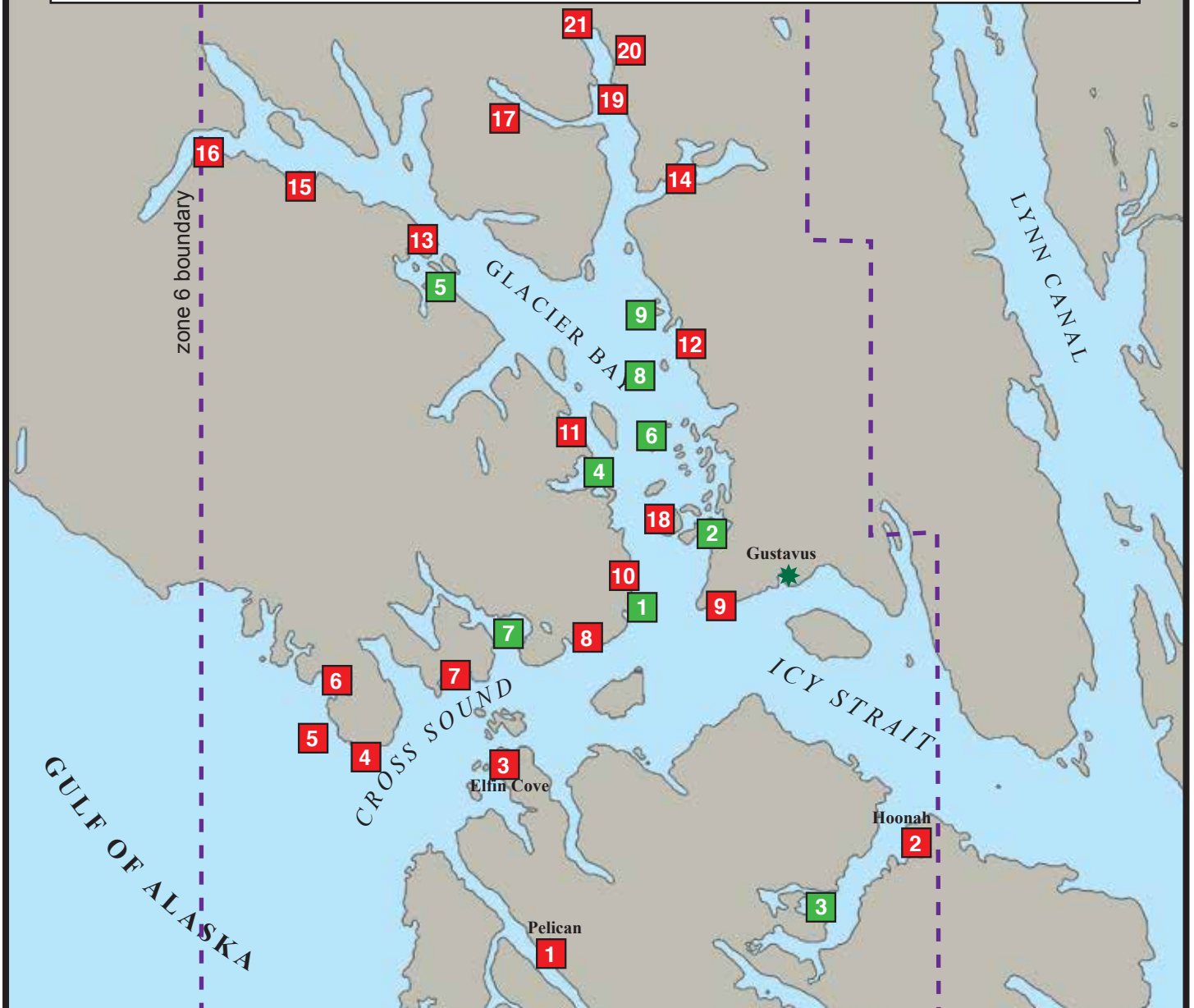


SOUTHEAST ALASKA - ZONE 6

October 2012

CANDIDATE SITES for GEOGRAPHIC RESPONSE STRATEGIES

1 – Pelican	7 – Fern Harbor	13 – Blue Mouse Cove	19 – Wolf Point Creek
2 – Hoonah	8 – Salt Chuck River (Icy Str)	14 – Adams Inlet	20 – McBride Inlet
3 – Elfin Cove	9 – Pt. Gustavus	15 – Reid Inlet	21 – Muir Inlet
4 – Cape Spe	10 – Pt. Carolus	16 – Johns Hopkins Inlet	
5 – Graves Roc	11 – Fingers Bay	17 – Gull Lake Stream	
6 – Murphy Cove	12 – S. Marble Is	18 – Sitakaday Narrows	



Established GEOGRAPHIC RESPONSE STRATEGIES

SE06-01 – Pt. Carolus	SE06-04 – Berg Bay	SE06-07 – Dundas Bay
SE06-02 – Bartlett Cove	SE06-05 – Hugh Miller Inlet	SE06-08 – S. Marble Island
SE06-03 – Neka Bay	SE06-06 – N. Beardslee Islands	SE06-09 – Spokane/Sandy Cove