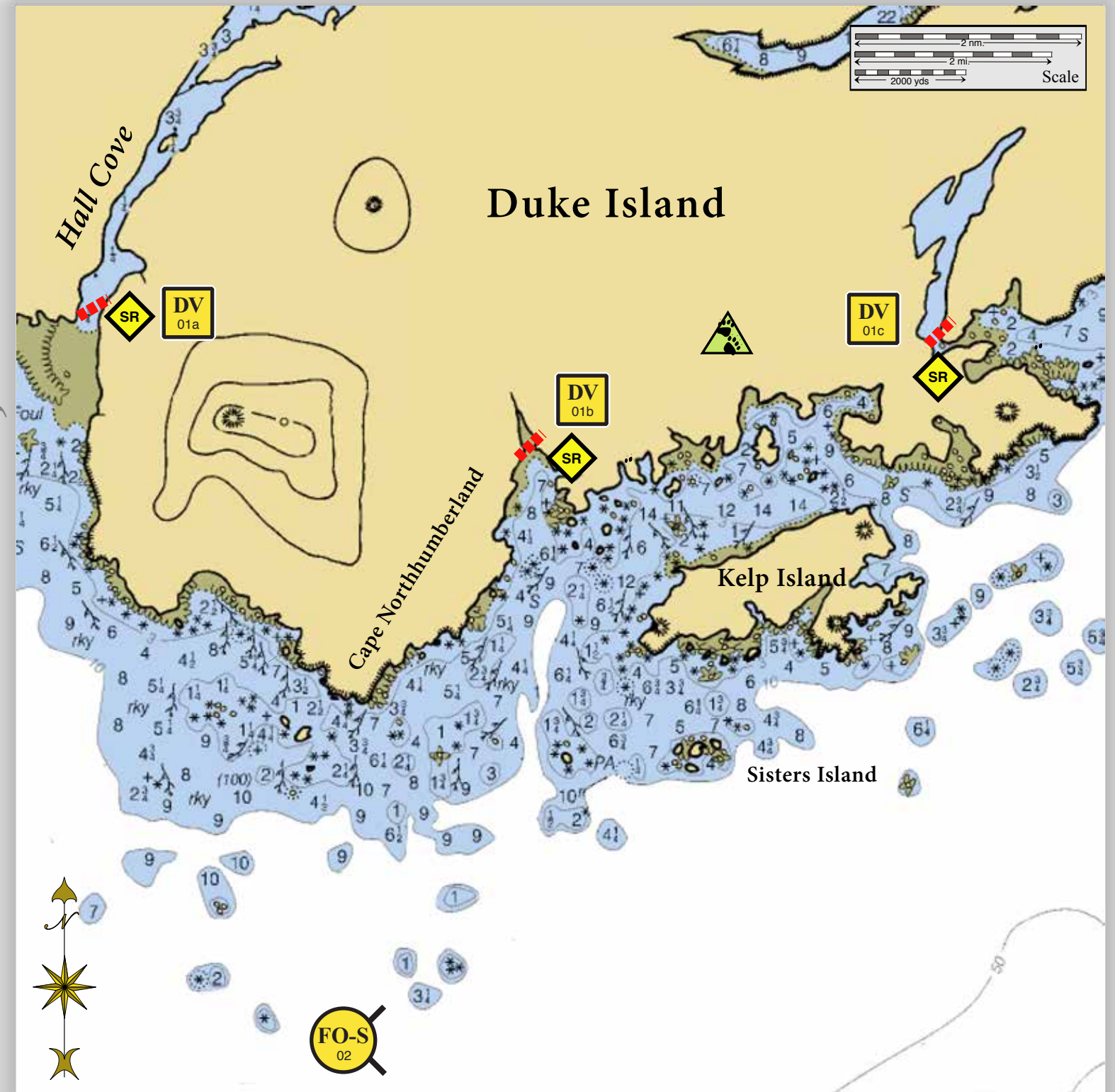


Geographic Response Strategies for Southeast Alaska Subarea, Zone 1

Southern Duke Island, SE01-11

Center of map at 54° 50.39' N Lat., 131° 20.51' W Lon.



This is not intended for navigational use.



DV01a viewed from the south.










DV01b viewed from the south.



DV01c viewed from the southeast.

Map
Legend

-  Free-oil Recovery
-  Diversion Booming
-  Shoreside Recovery
-  Protected-water Boom
-  Bears in Area, Guards Recommended

| ID | Location and Description | Response Strategy | Implementation | Response Resources | Staging Area | Site Access | Resources Protected | Special Considerations |
|---|---|---|---|--|---------------------------|--|---|--|
| SE01-11-01  | South Duke Island Hall Cove a. Lat. 59° 13.27'N Lon. 135°24.29'W b. Lat. 54° 52.91'N Lon. 131°19.03'W c. Lat. 54° 53.98'N Lon. 131°23.24'W | Divert and Collect Divert oil to shore-side collection points determined by spill source and trajectory. | Deploy anchors and boom with skiffs (class 6). At each location place protected-water boom at the proper angle to divert incoming oil to the collection site. Set-up collection site using shore-side collection units or if oil volume is minimal, use sorbent boom or snare line to provide collection of oil. Tend throughout the tide. <u>Boom Lengths:</u> a. 600 ft. b. 500 ft. c. 350 ft. | Deployment Equipment 1450 ft. protected-water boom 7 ea. anchor systems 12 ea. anchor stakes 3 ea. shore-side collection units Vessels 3 ea. class 6 2 ea. class 3 Personnel/Shift 13 ea. vessel crew 3 ea. response techs Tending Vessels 3 ea. class 6 2 ea. class 3 Personnel/Shift 10 ea. vessel crew 3 ea. response tech | Vessel Platform | Via marine waters Chart 16434_1 | Fish: coho, chum, cutthroat, dolly varden Birds: seabird nesting Marine mammals: harbor seals, sea lions Habitat: exposed rocky shores | Vessel master should have local knowledge. A population of bears may be present in the area. A bear guard is required during shore operations. Consult with Incident Command to ensure ADFG-Title 16 and ADNR-Title 41 permits have been obtained. Consult the Site Selection Matrix for cultural resources designation. Consult the ADEC "Spill Tactics for Alaska Responders" manual for additional information on the deployment of these tactics. Site: not surveyed Tested: not yet |
| SE01-11-02  | South Duke Island Nearshore waters in the general area of: Lat. 54° 50.44'N Lon. 131°15.27'W | Free-oil Recovery Maximize free-oil recovery in the offshore & nearshore environment of Duke Island depending on spill location and trajectory. | Deploy free-oil recovery strike teams upwind and up current of Duke Island. Use aerial surveillance to locate incoming slicks. | Deploy multiple free-oil recovery strike teams as required to maximize interception of oil before it impacts sensitive areas. | Melakatka 35-nm to the NW | Via marine waters Chart 16434_1 | Same as SE01-11-01 | Vessel master should have local knowledge. Use extreme caution, shoal waters with numerous reefs and rocks, shallow mud flats and channels. |

NOTE: Sensitive resource information can be found on other maps which can be accessed through the sensitive area section of the SE AK Sub-Area Contingency Plan: http://www.dec.state.ak.us/spar/perp/plans/scp_se.htm.