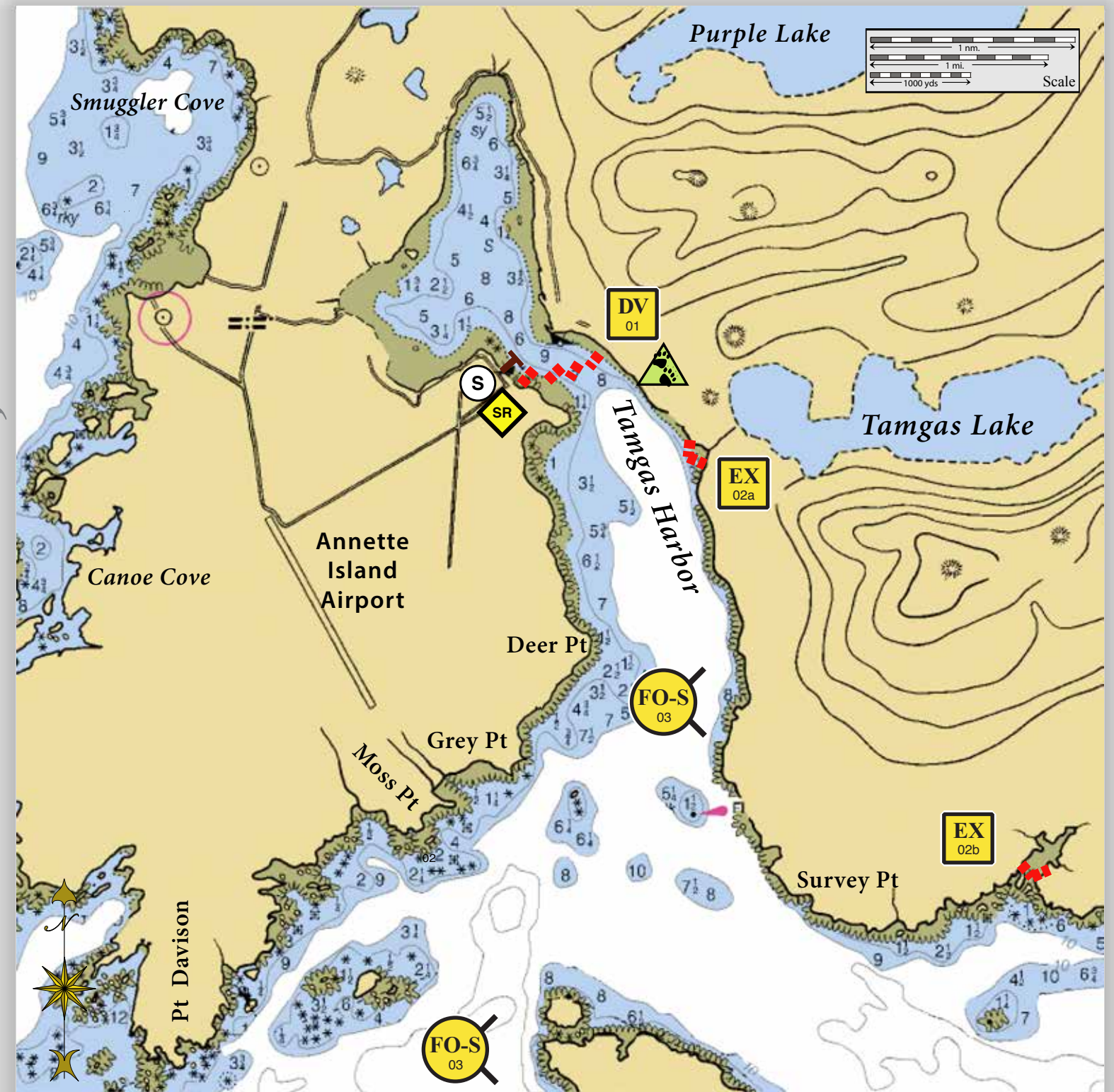


# Geographic Response Strategies for Southeast Alaska Subarea, Zone 1

## Tamgas Harbor, SE01-12

Center of map at 55° 04.11' N Lat., 131° 33.37' W Lon.



This is not intended for navigational use.



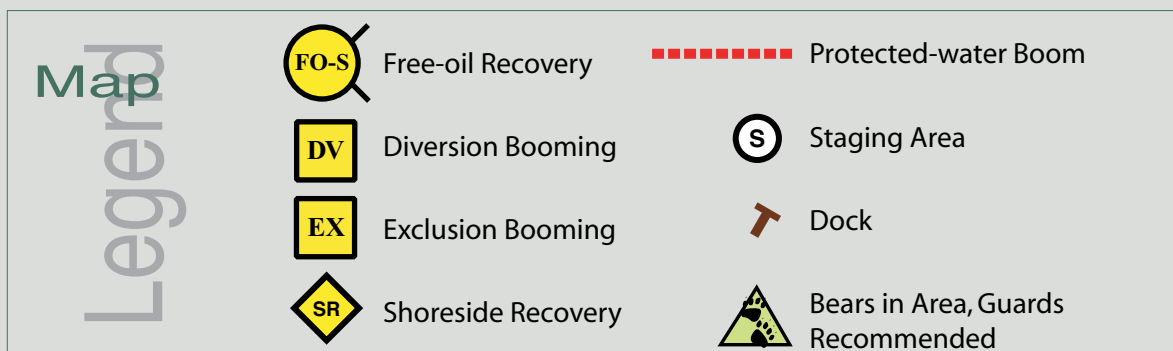
Site for DV01 viewed from the east.






EX02a viewed from the east.



EX02b viewed from the northwest.



ID	Location and Description	Response Strategy	Implementation	Response Resources	Staging Area	Site Access	Resources Protected	Special Considerations
SE01-12-01 	<b>Tamgas Harbor</b> Lat. 55° 04.11'N Lon. 131°32.38'W	<b>Divert and Collect</b> Divert oil to shore-side collection point determined by spill source and trajectory.	Deploy anchors and boom with skiffs (class 6).  Cascade 4 500 ft. sections of protected-water boom at proper angle to divert incoming oil to the collection site.  Set-up collection site using shore-side collection units or if oil volume is minimal, use sorbent boom or snare line to provide collection of oil.  Tend throughout the tide.	<b>Deployment Equipment</b> 2000 ft. protected-water boom 10 ea. small anchor systems 8 ea. anchor stakes 1 ea. shore-side collection units <b>Vessels</b> 1 ea. class 3 2 ea. class 6 <b>Personnel/Shift</b> 7 ea. vessel crew 2 ea. response techs <b>Tending Vessels</b> 1 ea. class 3 1 ea. class 6 <b>Personnel/Shift</b> 3 ea. vessel crew 1 ea. response tech	Tamgass Harbor Seaplane Dock Parking Lot	Site accessible via road from Metlakatla  Chart 17435_3	Fish- coho ,chum, pink, dolly varden  Birds- waterfowl concentration  Habitat- gravel beach, sheltered rocky shore, exposed tidal flats  Human uses- subsistence, commercial fishing, high recreational use, hatchery operation	Vessel master should have local knowledge.  Hatchery operation may provide support with logistics and equipment.  A population of bears may be present in the area. A bear guard is required during shore operations.  Consult with Incident Command to ensure ADFG-Title 16 and ADNR-Title 41 permits have been obtained.  Consult the Site Selection Matrix for cultural resources designation.  Consult the ADEC "Spill Tactics for Alaska Responders" manual for additional information on the deployment of these tactics.  Site surveyed: aerial survey May 2013  Tested: not yet
SE01-12-02 	<b>Tamgas Harbor</b> a. Lat. 55° 3.452'N Lon. 131° 30.70'W b. Lat. 55° 00.91'N Lon. 131°27.33'W	<b>Exclusion</b> Exclude oil from entering the Tamgas Lakes Creek and the creek outside the harbor.	Deploy anchors and boom with skiffs (class 6).  Place protected-water boom in a chevron pattern in front of the entrance to the streams.  Tend throughout the tide.  <u>Boom Lengths:</u> a. 800 ft. b. 600 ft.	<b>Deployment Equipment</b> 1400 ft. protected-water boom 7 ea. anchor systems 8 ea. anchor stakes <b>Vessels/Personnel/Shift</b> Same as SE01-12-01 <b>Tending Vessels/Personnel/Shift</b> Same as SE01-12-01	Tamgass Harbor Seaplane Dock Parking Lot	Site accessible via road from Metlakatla  Via marine waters  Chart 17435_3	Same as SE01-12-01	Vessel master should have local knowledge.
SE01-12-03 	<b>Tamgas Harbor</b> Nearshore waters in the general area of:  Lat. 55° 02.18'N Lon. 131°31.30'W	<b>Free-oil Recovery</b> Maximize free-oil recovery in the offshore & nearshore environment of Tamgas Harbor depending on spill location and trajectory.	Deploy free-oil recovery strike teams upwind and up current of Tamgas Harbor.  Use aerial surveillance to locate incoming slicks.	Deploy multiple free-oil recovery strike teams as required to maximize interception of oil before it impacts sensitive areas.	Metlakatla - marine access - 16 nm.	Via marine waters  Chart 17435_3	Same as SE01-12-01	Vessel master should have local knowledge.  Use extreme caution, shoal waters with numerous reefs and rocks.

NOTE: Sensitive resource information can be found on other maps which can be accessed through the sensitive area section of the SE AK Sub-Area Contingency Plan: [http://www.dec.state.ak.us/spar/perp/plans/scp\\_se.htm](http://www.dec.state.ak.us/spar/perp/plans/scp_se.htm).