



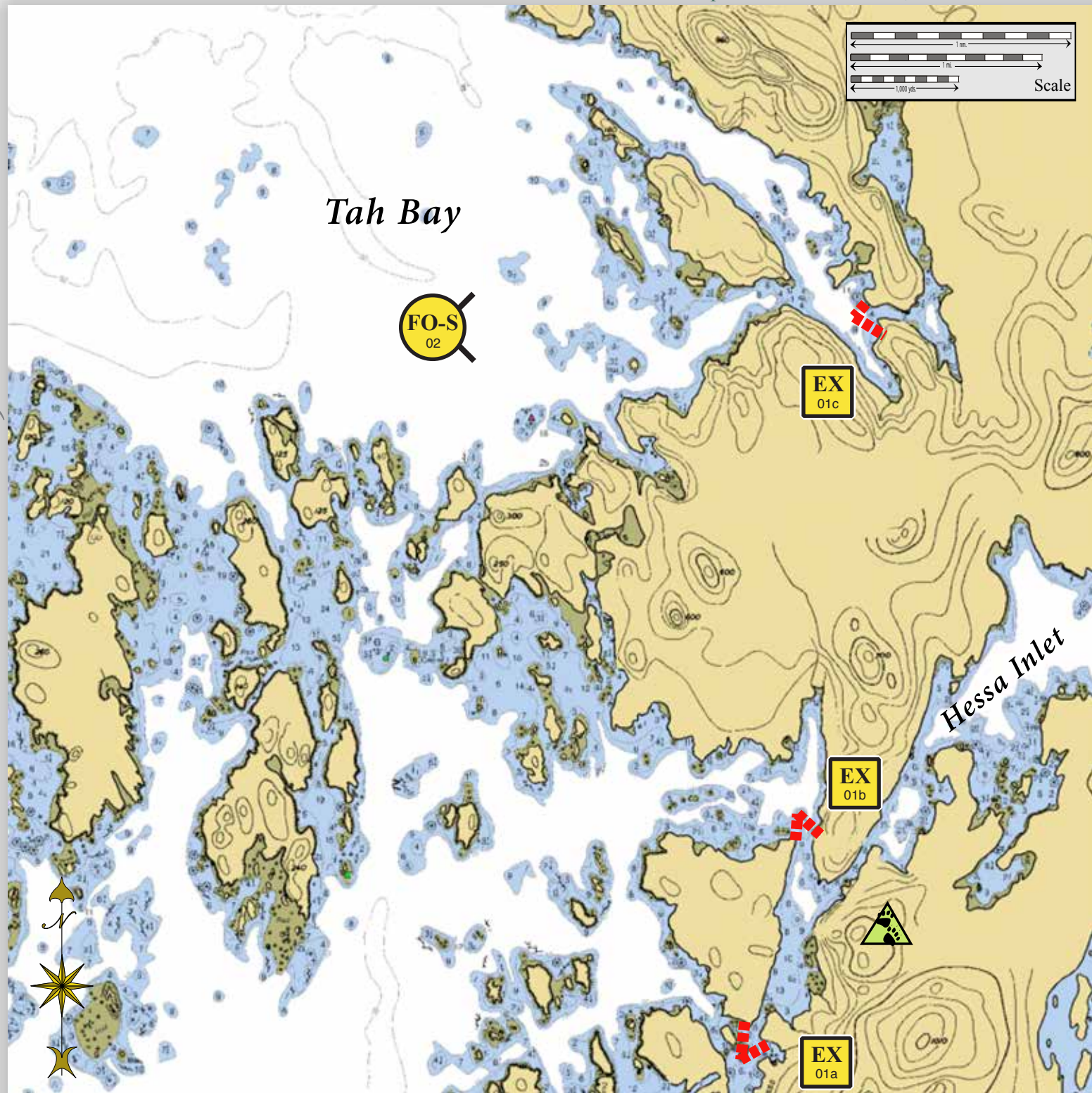
Approach to Tah Bay viewed from the west.



Hessa Island viewed from the southwest.

Tah Bay & Hessa Inlet, SE01-16

Center of map at 54° 49.34' N Lat., 132° 21.71' W Lon.





Geographic Response Strategies for Southeast Alaska Subarea, Zone 1

Map Legend

	Free-oil Recovery		Protected-water Boom
	Exclusion Booming		Bears in Area, Guards Recommended

This is not intended for navigational use.

ID	Location and Description	Response Strategy	Implementation	Response Resources	Staging Area	Site Access	Resources Protected	Special Considerations
SE01-16-01 	Tah Bay & Hessa Inlet a. Lat. 54° 46.03'N Lon. 132°19.14'W b. Lat. 54° 47.11'N Lon. 132°18.72'W c. Lat. 54° 50.19'N Lon. 132°17.97'W	Exclusion Exclude oil from impacting the intertidal areas in Tah Bay & Hessa Inlet.	Deploy anchors and boom with skiffs (class 6). Place protected-water boom in a chevron pattern in front of the entrance to Tah Bay and Hessa Inlet. For (a) & (b) use Hessa Island as an anchor point. Tend throughout the tide. <u>Boom Lengths:</u> a. 250 ft. b. 600 ft. c. 350 ft.	Deployment Equipment 1200 ft. protected-water boom 6 ea. anchor systems 12 ea. anchor stakes Vessels 1 ea. class 3 2 ea. class 6 Personnel/Shift 7 ea. vessel crew Tending Vessels 1 ea. class 3 1 ea. class 6 Personnel/Shift 3 ea. vessel crew	Vessel Platform	Via marine waters Chart 17433	Fish- chum, sockeye, coho, pink, dolly varden Birds- waterfowl concentration Habitat- sheltered rocky shore, gravel beach, sheltered tidal flats, marsh Human Uses – high recreational use, subsistence, commercial fishing, sport fishing	Vessel master should have local knowledge. Bear are present in the area. Bear guards required. Consult with Incident Command to ensure ADFG-Title 16 and ADNR-Title 41 permits have been obtained. Consult the Site Selection Matrix for cultural resources designation. Consult the ADEC “Spill Tactics for Alaska Responders” manual for additional information on the deployment of these tactics. Survey: Aerial surveyed May 2013 Tested: not yet
SE01-16-02 	Tah Bay & Hessa Inlet Nearshore waters in the general area of: Lat. 54° 46.24'N Lon. 132°22.79'W	Free-oil Recovery Maximize free-oil recovery in the offshore & nearshore environment of Tah Bay & Hessa Inlet depending on spill location and trajectory.	Deploy free-oil recovery strike teams upwind and up current of Tah Bay & Hessa Inlet. Use aerial surveillance to locate incoming slicks.	Deploy multiple free-oil recovery strike teams as required to maximize interception of oil before it impacts sensitive areas.	Hydaburg-16 nm- via marine access	Via marine waters Chart 17433	Same as SE01-16-01	Vessel master should have local knowledge. Use extreme caution, shoal waters with numerous reefs and rocks, shallow mud flats and channels.

NOTE: Sensitive resource information can be found on other maps which can be accessed through the sensitive area section of the SE AK Sub-Area Contingency Plan: http://www.dec.state.ak.us/spar/perp/plans/scp_se.htm.