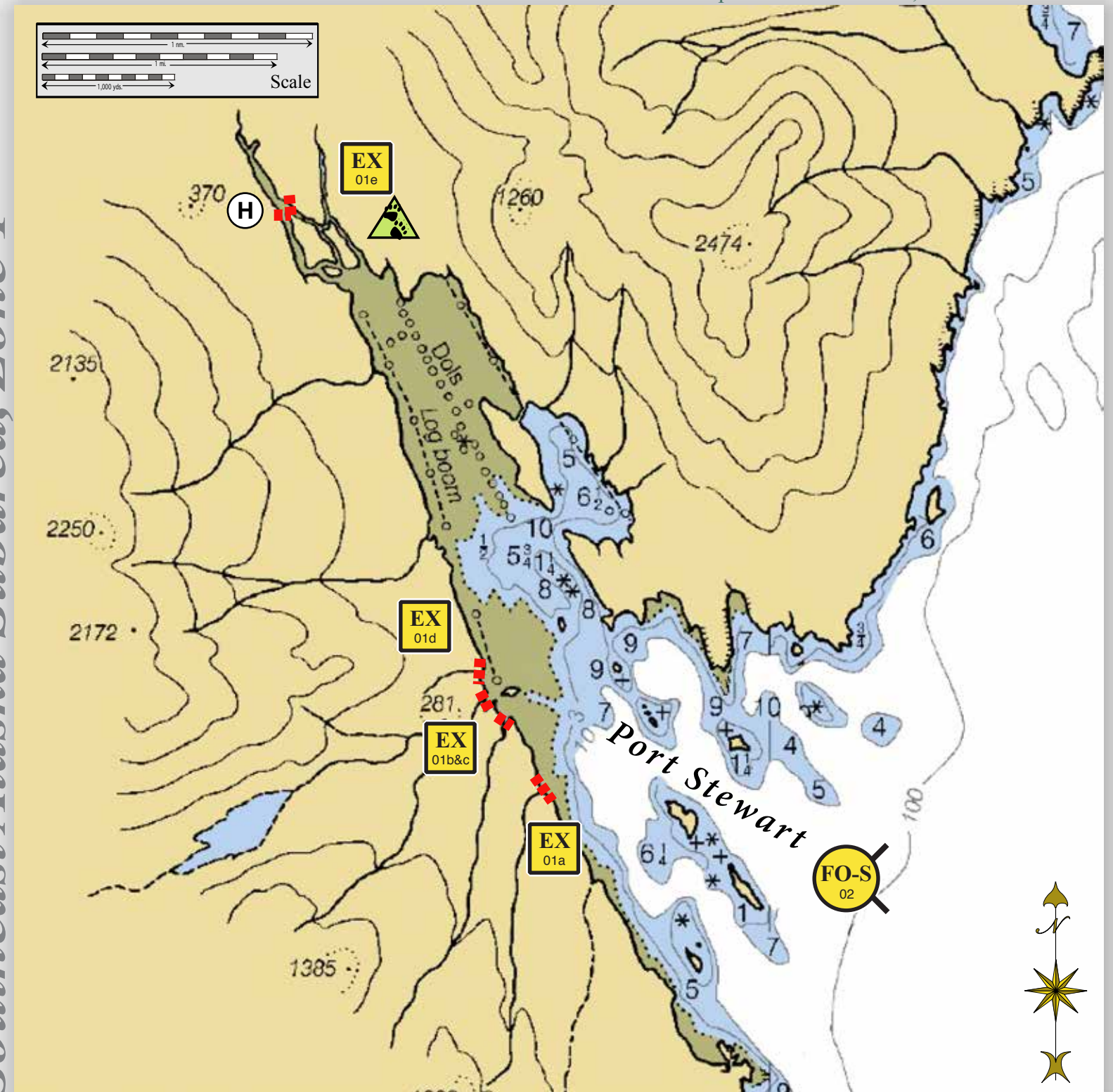


Port Stewart, SE01-23

Center of map at 55° 44.20' N Lat., 131° 52.03' W Lon.

Geographic Response Strategies for Southeast Alaska Subarea, Zone 1



This is not intended for navigational use.





EX01b&c viewed from the east.



EX01e viewed from the north.

Legend

- Free-oil Recovery
- Exclusion Booming
- Protected-water Boom
- Helicopter Pad
- Bears in Area, Guards Recommended

ID	Location and Description	Response Strategy	Implementation	Response Resources	Staging Area	Site Access	Resources Protected	Special Considerations
SE01-23-01 	<p>Port Stewart</p> <p>a. Lat. 55° 42.60'N Lon. 131°51.43'W</p> <p>b. Lat. 55° 42.74'N Lon. 131°51.75'W</p> <p>Deanna Creek</p> <p>c. Lat. 55° 42.90'N Lon. 131°51.78'W</p> <p>d. Lat. 55° 42.95'N Lon. 131°51.92'W</p> <p>Stewart Creek</p> <p>e. Lat. 55° 44.51'N Lon. 131°52.69'W</p>	<p>Exclusion</p> <p>Exclude oil from entering the identified streams.</p>	<p>Deploy anchors and boom with skiffs (class 6).</p> <p>Place protected-water boom in front of the entrance to designated creeks/rivers.</p> <p>Stewart Creek (e) is only approachable from the water at extreme high tides. If oil threatens the creek, helicopter deployment using a raft is recommended.</p> <p>Tend throughout the tide.</p> <p><u>Boom Lengths:</u></p> <p>a. 200 ft. b. 200 ft. c. 200 ft. d. 100 ft. e. 400 ft.</p>	<p>Deployment Equipment</p> <p>1100 ft. protected-water boom 6 ea. anchor systems 20 ea. anchor stakes</p> <p>Vessels</p> <p>1 ea. class 3 2 ea. class 6 or Helicopter 2 ea inflatable raft</p> <p>Personnel/Shift</p> <p>7 ea. vessel crew</p> <p>Tending Vessels</p> <p>1 ea. class 3 1 ea. class 6</p> <p>Personnel/Shift</p> <p>5 ea. vessel crew</p>	Vessel Platform	Via marine waters Chart 17422	<p>Fish: chum, coho, pink, dolly varden</p> <p>Birds: waterfowl concentrations</p> <p>Habitat: sheltered rocky shore, gravel beaches, sheltered tidal flats</p> <p>Marine mammals: otters, seals</p> <p>Human Uses: commercial fishing, high recreational use</p>	<p>Vessel master should have local knowledge.</p> <p>Bears are present in the area. Bear guard required.</p> <p>Consult the Site Selection Matrix for cultural resources designation.</p> <p>Consult the ADEC "Spill Tactics for Alaska Responders" manual for additional information on the deployment of these tactics.</p> <p>Surveyed: May 2013</p> <p>Tested: Not yet</p>
SE01-23-02 	<p>Port Stewart</p> <p>Nearshore waters in the general area of:</p> <p>Lat. 55° 42.27'N Lon. 131°49.41'W</p>	<p>Free-oil Recovery</p> <p>Maximize free-oil recovery in the offshore & nearshore environment of Port Stewart depending on spill location and trajectory.</p>	<p>Deploy free-oil recovery strike teams upwind and up current of Port Stewart areas.</p> <p>Use aerial surveillance to locate incoming slicks.</p>	<p>Deploy multiple free-oil recovery strike teams as required to maximize interception of oil before it impacts sensitive areas.</p>	Ketchikan- 23 nm- via marine access	Via marine waters Chart 17422	Same as SE01-23-01	<p>Vessel master should have local knowledge.</p> <p>Use extreme caution, shoal waters with numerous reefs and rocks, shallow mud flats and channels.</p>

NOTE: Sensitive resource information can be found on other maps which can be accessed through the sensitive area section of the SE AK Sub-Area Contingency Plan: http://www.dec.state.ak.us/spar/perp/plans/scp_se.htm.