

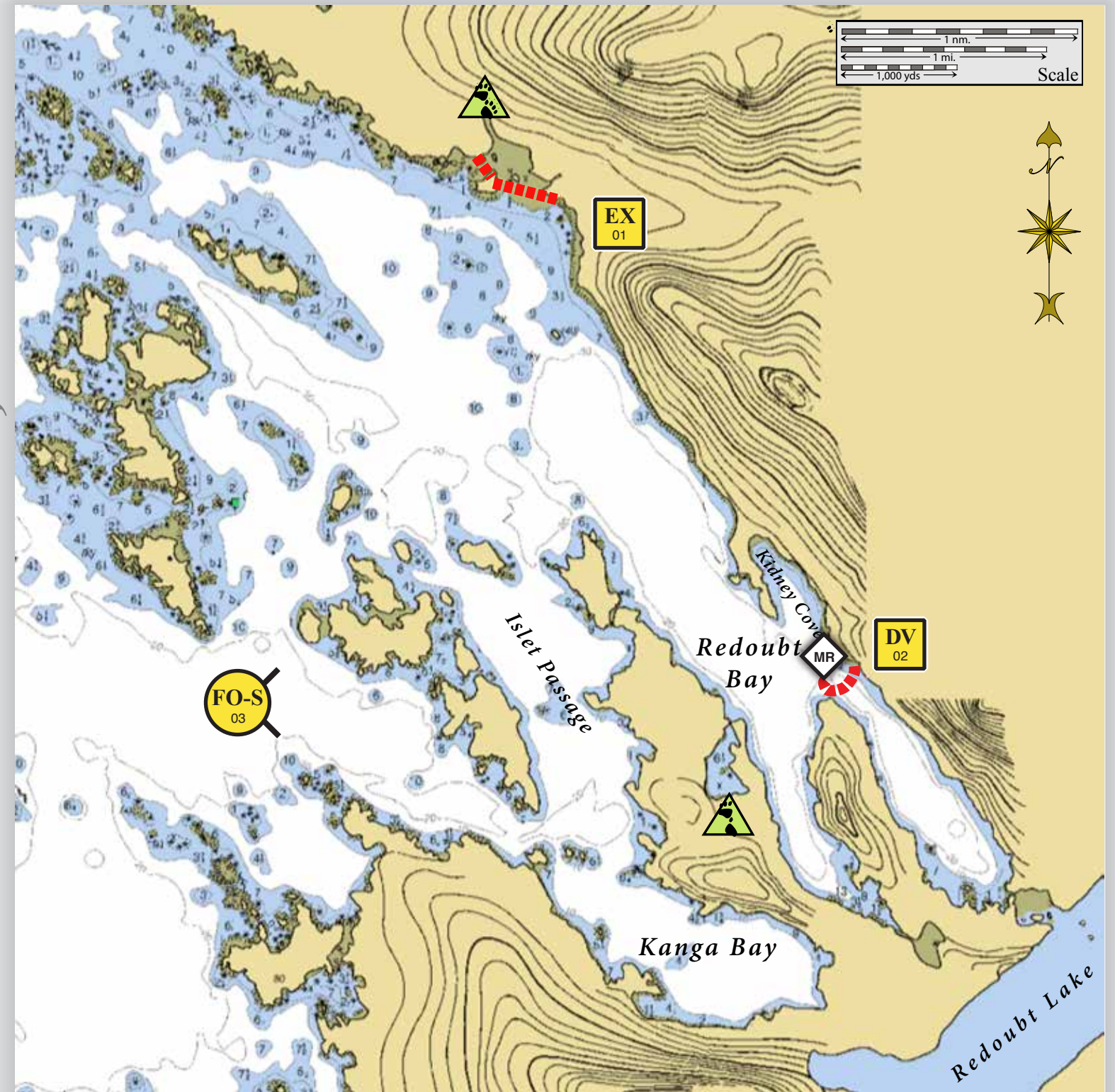
Redoubt Bay/Kanga Bay/Tiagud Is., SE05-17

Center of map at 56° 55.30' N Lat., 135° 21.56' W Lon.



EX01 viewed from the west.




Geographic Response Strategies for Southeast Alaska Subarea, Zone 5



This is not intended for navigational use.

Map
Legend

- | | | | |
|--|-------------------|--|-----------------------------------|
| | Free-oil Recovery | | Protected-water Boom |
| | Diversion Booming | | Marine Recovery |
| | Exclusion Booming | | Bears in Area, Guards Recommended |

ID	Location and Description	Response Strategy	Implementation	Response Resources	Staging Area	Site Access	Resources Protected	Special Considerations
SE05-17-01 	Redoubt Bay/Kanga Bay/Tiagud Island Lat. 56° 56.15'N Lon. 135°21.42'W	Exclusion Exclude oil from entering the Redoubt Bay/ Kanga Bay/Tiagud Island area. Aerial survey prior to deployment.	Deploy anchors and boom with skiffs (class 6). Using Caution Is. as an anchor point, place 1750 ft. of protected-water boom in a chevron pattern in front of the entrance to Kizhuchia Creek and intertidal area. Tend throughout the tide.	Deployment Equipment 1750 ft. protected-water boom 7 ea. anchor systems 8 ea. anchor stakes Vessels 1 ea. class 3 2 ea. class 6 Personnel/Shift 7 ea. vessel crew Tending Vessels 1 ea. class 3 1 ea. class 6 Personnel/Shift 3 ea. vessel crew	Vessel Platform	Via marine waters Chart 17326-1	Fish: chum, sockeye, dolly varden, coho, pink Birds: seabird nesting Marine mammals- seals Habitat- sheltered rocky shore, gravel beach Human Uses – log storage, high recreational use, subsistence, commercial fishing	Vessel master should have local knowledge. Bear are present in the area. Bear guard required. Consult with Incident Command to ensure ADFG-Title 16 and ADNR-Title 41 permits have been obtained. Consult the Site Selection Matrix for cultural resources designation. Consult the ADEC “Spill Tactics for Alaska Responders” manual for additional information on the deployment of these tactics. Survey: not yet Tested: not yet
SE05-17-02 	Redoubt Bay/Kanga Bay/Tiagud Island Lat. 56° 53.55'N Lon. 135°18.52'W	Divert and Collect- Marine Recovery Divert oil to marine recovery determined by spill source and trajectory. Aerial survey recommended prior to deployment.	Deploy anchors and boom with skiffs (class 6). Place protected-water boom at proper angle to divert incoming oil to the collection site. At a collection site near shore, on the incoming tide form the boom into a “J” shape to trap the oil. Set-up collection using a marine collection units or if oil volume is minimal, use sorbent boom or snare line to provide collection of oil. Tend throughout the tide.	Deployment Equipment 1400 ft. protected-water boom 7 ea. small anchor systems 8 ea. anchor stakes 1 ea. shore-side collection units Vessels/Personnel/Shift Same as SE05-17-01 Tending Vessels/Personnel/Shift Same as SE05-17-01	Vessel Platform	Via marine waters Chart 17326-1	Same as SE05-17-01	Vessel master should have local knowledge.
SE05-17-03 	Redoubt Bay Nearshore waters in the general area of: Lat. 56° 55.15'N Lon. 135°22.11'W	Free-oil Recovery Maximize free-oil recovery in the offshore & nearshore environment Redoubt Bay/Kanga Bay/Tiagud Island areas depending on spill location and trajectory.	Deploy free-oil recovery strike teams upwind and up current of Redoubt Bay/Kanga Bay/Tiagud Island areas. Use aerial surveillance to locate incoming slicks.	Deploy multiple free-oil recovery strike teams as required to maximize interception of oil before it impacts sensitive areas.	Sitka- 9nm-via marine access	Via marine waters Chart 17326-1	Same as SE05-17-01	Vessel master should have local knowledge. Use extreme caution, shoal waters with numerous reefs and rocks, shallow mud flats and channels.

NOTE: Sensitive resource information can be found on other maps which can be accessed through the sensitive area section of the SE AK Sub-Area Contingency Plan: http://www.dec.state.ak.us/spar/perp/plans/scp_se.htm.