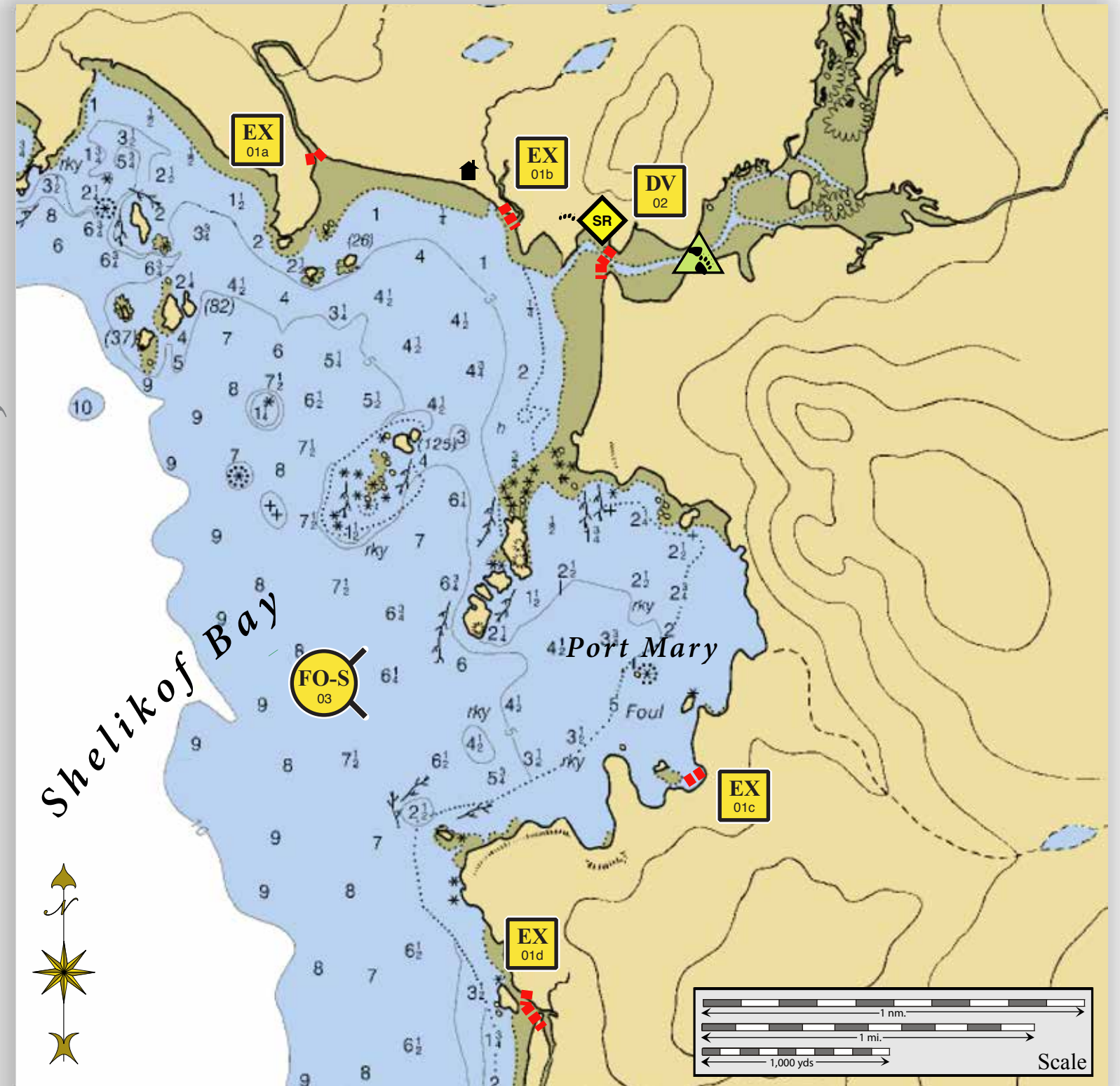


Shelikof Bay, SE05-21

Center of map at 57° 08.96' N Lat., 135° 46.95' W Lon.

Geographic Response Strategies for Southeast Alaska Subarea, Zone 5



This is not intended for navigational use.



EX01a viewed from the east.



EX01b viewed from the south.

Map Legend

	Free-oil Recovery		Protected-water Boom
	Diversion Booming		Shoreside Recovery
	Exclusion Booming		Bears in Area, Guards Recommended

ID	Location and Description	Response Strategy	Implementation	Response Resources	Staging Area	Site Access	Resources Protected	Special Considerations
SE05-21-01 EX	Shelikof Bay a. Lat. 57° 10.13'N Lon. 135°46.10'W b. Lat. 57° 10.08'N Lon. 135°45.19'W c. Lat. 57° 08.33'N Lon. 135°44.26'W d. Lat. 57° 08.03'N Lon. 135°45.17'W	Exclusion Exclude oil from entering the creeks and intertidal areas in Shelikof Bay.	Place protected-water boom in a chevron pattern in front of the entrance to designated creeks/rivers and intertidal areas. Tend throughout the tide. <u>Boom Lengths:</u> a. 300 ft. b. 200 ft. c. 200 ft. d. 400 ft.	Deployment Equipment 1100 ft. protected-water boom 5 ea. anchor systems 16 ea. anchor stakes Vessels 1 ea. class 3 2 ea. class 6 Personnel/Shift 7 ea. vessel crew Tending Vessels 1 ea. class 6 1 ea. class 3 Personnel/Shift 5 ea. vessel crew	Vessel Platform	Via marine waters Chart 17325_1	Fish: chum, sockeye, dolly varden, coho, pink Birds: seabird nesting Habitat: sheltered rocky shore, gravel beach Human Uses: high recreational use, subsistence, commercial fishing	Vessel master should have local knowledge. Bears are present in the area. Bear guard required. This area is extremely exposed and subject to significant sea swell. Deployment should only be considered under optimal conditions. Helicopter deployment may be considered. Consult with Incident Command to ensure ADFG-Title 16 and ADNR-Title 41 permits have been obtained. Consult the Site Selection Matrix for cultural resources designation. Consult the ADEC "Spill Tactics for Alaska Responders" manual for additional information on the deployment of these tactics. Survey: May 24, 2013 Tested: not yet
SE05-21-02 DV	Shelikof Bay Lat. 57° 09.57'N Lon. 135°44.55'W	Divert and Collect Divert oil to shore-side collection points determined by spill source and trajectory.	Deploy anchors and boom with skiffs (class 6). Place protected-water boom at proper angle to divert incoming oil to the collection site. Set-up collection site using shore-side collection units or if oil volume is minimal, use sorbent boom or snare line to provide collection of oil. Tend throughout the tide.	Deployment Equipment 500 ft. protected-water boom 3 ea. anchor systems 4 ea. anchor stakes 1 ea. shore-side collection units Vessels/Personnel/Shift Same as SE05-21-01 Tending Vessels/Personnel/Shift Same as SE05-21-01	Vessel Platform	Via marine waters Chart 17325_1	Same as SE05-21-01	Vessel master should have local knowledge. USFS Cabin in the area may provide support.
SE05-21-03 FO-S	Shelikof Bay Nearshore waters in the general area of: Lat. 57° 07.40'N Lon. 135°46.02'W	Free-oil Recovery Maximize free-oil recovery in the offshore & nearshore environment Shelikof Bay depending on spill location and trajectory.	Deploy free-oil recovery strike teams upwind and up current of Shelikof Bay areas. Use aerial surveillance to locate incoming slicks.	Deploy multiple free-oil recovery strike teams as required to maximize interception of oil before it impacts sensitive areas.	Vessel Platform	Via marine waters Chart 17325_1	Same as SE05-21-01	Vessel master should have local knowledge. Use extreme caution, shoal waters with numerous reefs and rocks, shallow mud flats and channels.

NOTE: Sensitive resource information can be found on other maps which can be accessed through the sensitive area section of the SE AK Sub-Area Contingency Plan: http://www.dec.state.ak.us/spar/perp/plans/scp_se.htm.