



PR02 viewed from the northwest.

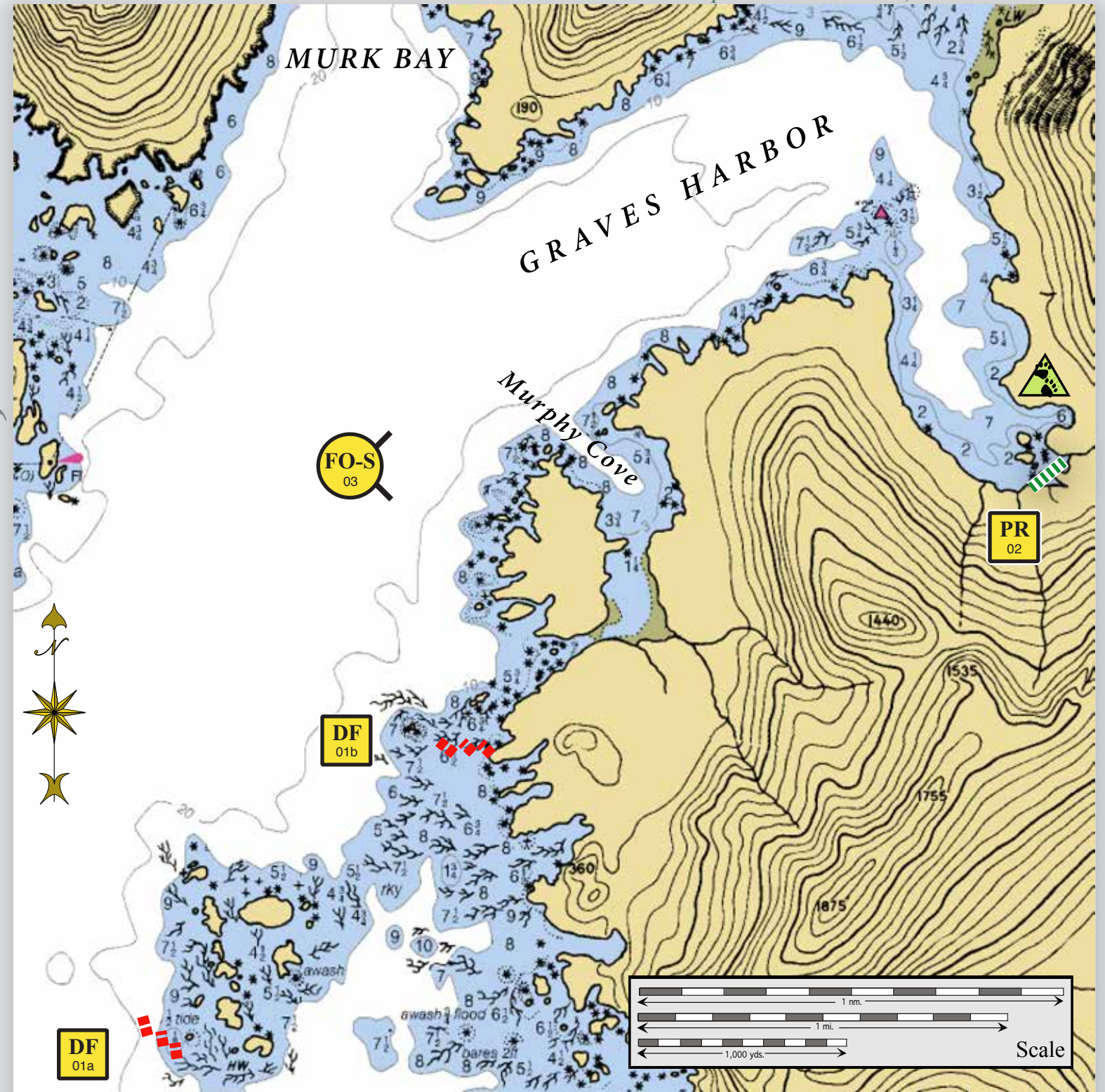


Graves Rock as viewed from the northeast.

# Geographic Response Strategies for Southeast Alaska Subarea, Zone 6

## Graves Rock/Murphy Cove, SE06-12

Center of map at 58° 14.93' N Lat., 136° 45.38' W Lon.



**Map Legend**

Free-oil Recovery	Snare or Sorbent Boom
Deflection Booming	Shoreside Recovery
Passive Recovery	Bears in Area, Guards Recommended
Protected-water Boom	

This is not intended for navigational use.



ID	Location and Description	Response Strategy	Implementation	Response Resources	Staging Area	Site Access	Resources Protected	Special Considerations
SE06-12-01 <b>DF</b>	<b>Graves Rocks / Murphy Cove</b> a. Lat. 57° 14.34 N Lon. 136°49.19 W  b. Lat. 57° 15.47 N Lon. 136°44.01 W	<b>Deflection</b> Deflect oil coming towards Graves Rocks into the channel for free-oil recovery.  This area is extremely exposed and subject to large ocean swell. Conditions should be constantly monitored to ensure responder safety.	Deploy boom and anchor system with skiffs (class 6).  Survey the area prior to deployment to determine oil trajectory.  At each location, position in a cascaded fashion 3 x 600 ft. of protected-water boom at a proper angle to deflect oil from Graves Rocks  Tend throughout the tide.	<b>Deployment</b> <b>Equipment</b> 3600 ft. protected-water boom 18 ea. anchor systems <b>Vessels</b> 1 ea. class 3 2 ea. class 6 <b>Personnel/Shift</b> 7 ea. vessel crew <b>Tending</b> <b>Vessels</b> 1 ea. class 3 2 ea. class 6 <b>Personnel/Shift</b> 5 ea. vessel crew	Vessel Platform	Via marine waters  Chart 17301	Fish: chum  Birds: waterfowl concentration  Marine mammals: harbor seals, sea lions  Habitat: gravel beach, marsh, sheltered rocky shore, exposed tidal flats, exposed rocky shore	Vessel master should have local knowledge.  Consult with Incident Command to ensure ADFG-Title 16 and ADNDR-Title 41 permits have been obtained.  Consult the Site Selection Matrix for cultural resources designation.  Consult the ADEC "Spill Tactics for Alaska Responders" manual for additional information on the deployment of these tactics.  Site surveyed: not surveyed.  Tested: not yet
SE06-12-02 <b>PR</b>	<b>Graves Rocks / Murphy Cove</b> Lat. 58° 16.42'N Lon. 136° 40.85'W	<b>Passive Recovery</b> Deploy passive recovery across designated channels in Murphy Cove.	Place and anchor snare line or sorbent boom across the channels of streams in Murphy Cove.  Replace as necessary to maximize the recovery.	<b>Deployment</b> <b>Equipment</b> 200 ft. snare line or sorbent boom 1 ea. anchor systems 4 ea. anchor stakes <b>Tending</b> <b>Vessels/Personnel/Shift</b> Same as SE06-12-01 <b>Tending</b> <b>Vessels/Personnel/Shift</b> Same as SE06-12-01	Vessel Platform	Via marine waters  Chart 17301	Same as SE06-12-01	Vessel master should have local knowledge.  Bears are in the area. Bear guard required.
SE06-12-03 <b>FO-S</b>	<b>Graves Rocks / Murphy Cove</b> Nearshore waters in the general area of:  Lat. 58° 20.33'N Lon. 136°11.35'W	<b>Free-oil Recovery</b> Maximize free-oil recovery in the offshore & nearshore environment Hoonah depending on spill location and trajectory.	Deploy free-oil recovery strike teams upwind and up current of Lagoon Creek.  Use aerial surveillance to locate incoming slicks.	Deploy multiple free-oil recovery strike teams as required to maximize interception of oil before it impacts sensitive areas.	Hoonah-54nm via marine waters.	Via marine waters  Chart 17301	Same as SE06-12-01	Vessel master should have local knowledge.

NOTE: Sensitive resource information can be found on other maps which can be accessed through the sensitive area section of the SE AK Sub-Area Contingency Plan: [http://www.dec.state.ak.us/spar/perp/plans/scp\\_se.htm](http://www.dec.state.ak.us/spar/perp/plans/scp_se.htm).