



# Angoon, AK

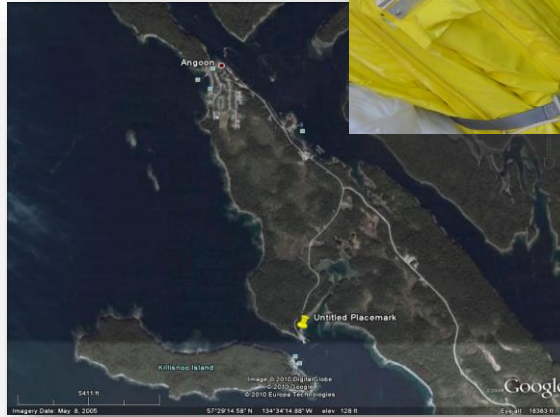
Local Response Conex



The Angoon response conex is located 2.5 miles out of town by the Ferry Dock.

### Conex Access Contacts:

Vacant (Harbormaster)	(907) 788-3653
Allison Natcher	(907) 465-5367
Southeast Responders (ADEC)	(907) 465-5340
After Hours call	(800) 478-9300



### LOCATION MAP



## ANGOON RESPONSE CONEX

QTY	UNIT	DESCRIPTION	USED DATE	QTY
<b>CONTAINMENT</b>				
900	ft	Harbor Boom 8"X 12" X 100 foot sections ( Note: 9 Sections Marked ADEC)		
2	ea	Tow bridles with floats, marked ADEC		
10	ea	22 lb. Danforth anchors		
10	ea	10' X 3/8" Galvanized chain		
32	ea	5/8" X 100' Anchor and/or tow ropes		
20	ea	A-1 Flo. Orange buoys, with 10' of 5/8" rope thru eye		
200	ft	Swift / Fast Water Boom 4" X 2" X 25 foot Sections (Note: 8 Sections Marked ADEC)		
2	ea	Tow bridles for small boom		
1	roll	3/8" line, 600' length		
6	ea	1 & 1/4 " O.D. X 5' Galv. Ground stakes		
<b>RECOVERY</b>				
25	bag	Sorbent boom, (4 each 5" X 10' lengths per bag)		
30	bag	Sorbent pads, type 56 HP, 17" X 19", (100 count)		
2	roll	Sorbent roll, type 100, 36" X 100"		
1	ea	Sorbent pad hand wringer		
10	bags	Oil snares, (Pom-poms on a rope), 50' Length		
<b>STORAGE</b>				
4	ea	85 Gallon over-pack drums, Yellow		
2	ea	85 Gallon over-pack drums, packed with response supplies		
1	roll	Over-pack drum liners, 6-mil		
<b>TREATMENT/DISPOSAL</b>				
3	box	Oily waste clean-up bags, 4-mil		
2	roll	Poly sheeting, 6-mil, 12' X 100' (Visquine)		
4	ea	Bulk lift bags (Super sacks)		
2	box	Lift bag liners, 50 bags/box		
<b>TOOLS</b>				
1	ea	Sledge hammer, 8 lb., 36" fiberglass handle		
1	ea	Tool box, 20" Yellow poly		
1	ea	Socket wrench breaker bar, flex head, 1/2" drive		
1	ea	Socket wrench ratchet, 1/2" drive		
1	ea	15/16" - 1/2" drive, 12 point deep socket		
1	ea	15/16" - 1/2" drive, 12 point shallow drive socket		
1	ea	8" Slip joint adjustable pliers, HD, rubber grip		
1	ea	15/16" Open end wrench		
1	ea	12" Channel lock pliers		
1	ea	16 oz. Steel claw hammer		
1	ea	16 oz. Steel ball point hammer		
1	ea	10" Rubber grip hacksaw		
1	ea	10" Hacksaw blades, 10 pack		
1	ea	American padlock, heavy duty w/ 2 keys		

# ANGOON RESPONSE CONEX

QTY	UNIT	DESCRIPTION	USED DATE	QTY
1	ea	20' X 8' X 8' Steel container, painted outside " Marine Highway Blue", painted inside light gray or white		
2	ea	8" X 8" X 8" AWW treated timbers for blocking		

If any of the items in the conex were used, please mark "X" in the USED column and indicate the quantity used.  
 In addition, please fill out the portion below and send the modified form to the following address or fax:

ADEC/SPAR/PERP  
 Attention: Robert Blea  
 555 Cordova Street, 2nd Flr  
 Anchorage, AK 99501 or Fax: 907-269-7648

---

Conex Accessed By: (please print neatly)

---

Association (Business, Agency, etc.)

**ADEC Contact Information:**

Allison Natcher	(907) 465-5367
Bob Mattson (ADEC Logistics)	(907) 465-5349
ADEC Juneau Office	(907) 465-5340
ADEC After Hours	(800) 478-9300

---

Signature and Date