



# Galena, AK

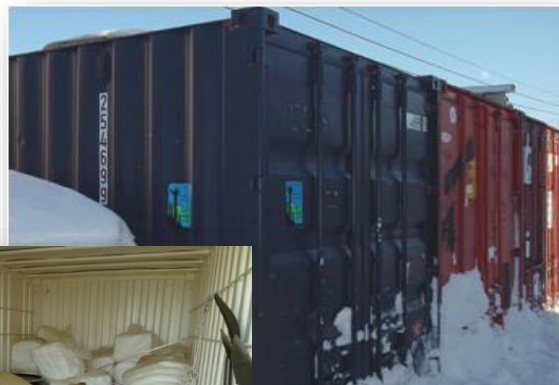
Local Response Conex



The Response Conex is located at the Galena airport.

### Contacts for access to this conex:

Wes Ghormley (ADEC)	(907) 451-2164
Russ Sweetsir (Mayor)	(907) 656-1301
Fairbanks Responders (ADEC)	(907) 451-2121
After Hour Call	(800) 478-9300



## LOCATION MAP



# GALENA RESPONSE CONEX

QTY	UNIT	DESCRIPTION	USED DATE	QTY
<b>PPE (PERSONAL PROTECTION EQUIPMENT)</b>				
8	ea	Hardhats		
10	ea	Safety eyewear		
12	pr	Nitrile gloves - size 9		
12	pr	Nitrile gloves - size 10		
1	box	Latex disposable gloves		
3	ea	Rainsuits (size M)		
6	ea	Rainsuits (size L)		
3	ea	Rainsuits (size XL)		
5	pr	Black latex overboots (size M)		
5	pr	Black latex overboots (size L)		
<b>SECURITY/LIGHTING</b>				
1	ea	Padlock		
<b>CONTAINMENT</b>				
1	ea	Boom 25 ft sections		
2	ea	Boom 50 ft sections		
1	ea	Towing bridle assy		
6	ea	22 lb Danforth anchors		
3	ea	4' X 3/8" Chains		
1	ea	50 ft poly dacron blend rope assemblies		
25	ea	Snap hooks		
1	spl	500' 3/8 Twisted nylon rope		
<b>RECOVERY</b>				
10	ea	Rebar, 1/2" - 5/8" Diameter, 4'-5' Long, Steel, ribbed		
<b>RECOVERY Other:</b>				
2	bdl	Static resistant sorbent pads (bundles)		
10	bdl	Oil sorbent sheets (bundles)		
4	bdl	Oil sorbent boom (bundles)		
2	ea	Bags loose absorbent material		
1	ea	Sorbent pad hand wringer, rustproof, steel frame		
<b>STORAGE</b>				
2	ea	85 gallon overpack drums		
30	ea	85 gallon drum liners		
1	ea	Standard drum plug wrench (min. 15" in length)		
1	ea	100' X 100' 20 mil plastic liner		
1	ea	500 gallon storage tank, polyethylene, skid mounted		
<b>TREATMENT/DISPOSAL</b>				
1	ea	Carton- 6 mil trashbags		
<b>SMALL TOOLS</b>				
1	ea	Flat nose shovel, non sparking		
1	ea	39" Response shovel		
1	ea	Round nose shovel		
1	ea	Sledge hammer, 10-15 lb head		
<b>CONEX CARGO STORAGE</b>				
4	ea	Ratchet assembly cargo straps		

# GALENA RESPONSE CONEX

QTY	UNIT	DESCRIPTION	USED DATE	QTY
-----	------	-------------	-----------	-----

If any of the items in the conex were used, please mark "X" in the USED column and indicate the quantity used.  
In addition, please fill out the portion below and send the modified form to the following address:

ADEC/SPAR/PERP  
Attention: Robert Blea  
555 Cordova Street, 2nd Flr  
Anchorage, AK 99501 or Fax: 907-269-7648

---

Conex Accessed By: (please print neatly)

---

Association (Business, Agency, etc.)

**ADEC Contact Information:**

Wes Ghormley (ADEC Fairbanks) (907) 451-2164

ADEC Warehouse: Robert Blea (907) 344-7380

ADEC Fairbanks (907) 451-2121

ADEC After Hours (800) 478-9300

---

Signature and Date