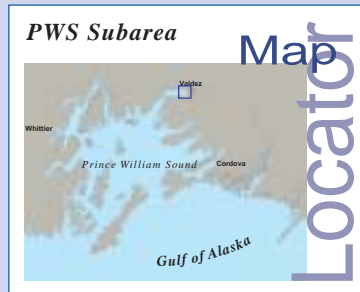


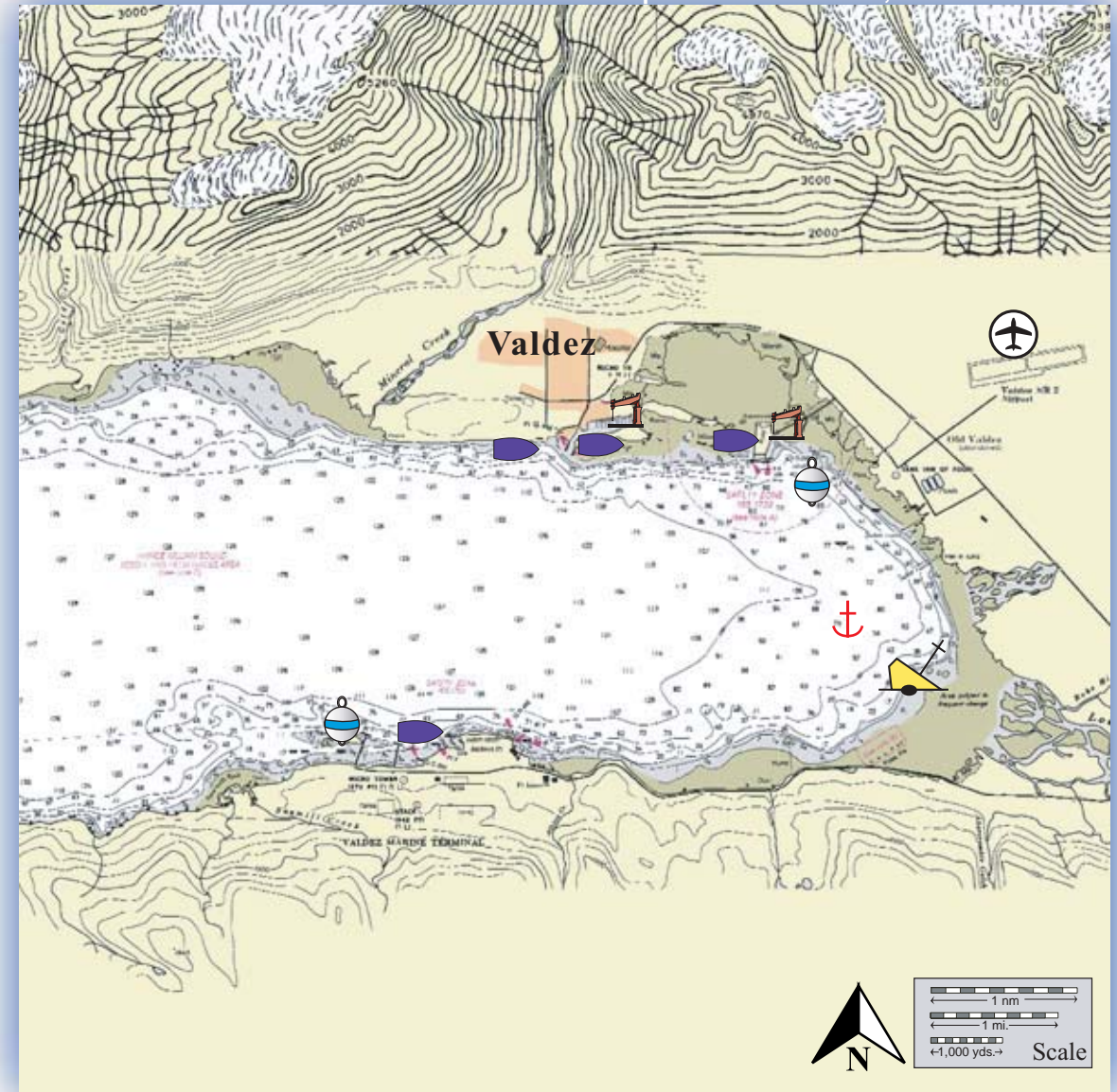
# Places of Refuge



Port Valdez looking towards

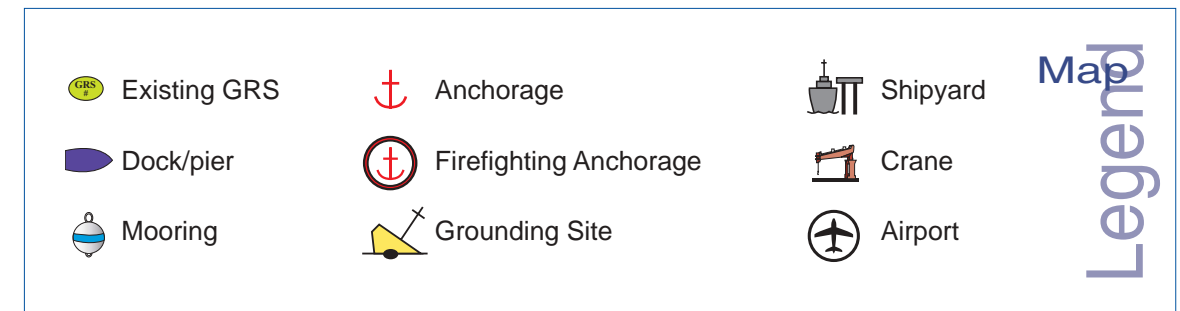
# Port Valdez

Center of map at 61° 07.27' N Lat., 146° 20.99' W Lon.



This is not intended for navigational use.

## Places of Refuge for Prince William Sound Subarea



Port Valdez Safety of Life				
	Contact	Location	Radio	Telephone
Search and Rescue	State Troopers	Valdez		907-835-4359
	Valdez Police/Fire	212 Chenega Ave., Valdez		907-835-4560
Medical/Hospital	Valdez Community Hospital	Valdez		907-835-2249
Evacuation	USCG	Valdez	Marine VHF Ch 16, 22a	907-835-7210
Law Enforcement	State Troopers	Valdez		907-835-4359
	Valdez Police	Valdez		907-835-4560
Dangerous Cargo	Port Authority	Valdez		907-835-4981
Public Notification	KCHU radio	Valdez		907-835-4665
	KVAK radio	Valdez		907-835-5825
	Anchorage Daily News	Anchorage		907-257-4200

Port Valdez Services and Contacts	
Description	
<b>Response</b>	
Oil Spill Response Organizations	Alyeska/SERVS: 907-835-6620; Alaska Chadux Corp.: Anchorage, 278-3365
Tugs/Tow Boats	Alyeska Service Co. (SERVS): Valdez, 835-6620; Wel-Aska Corp.: Valdez, 835-2424
Salvors	Crowley: 835-8807; Titan (Florida): 954-929-5200
Firefighting	Valdez Fire Dept.: 911 available, 835-4500
Lightering/Fulid Transfers	USN SUPSALV: Anchorage, 384-2968; Alyeska/SERVS: 907-835-6620
Command Posts	Initially the SERVS facility: Valdez, 835-6620. Auxiliary posts to be determined depending on spill size. Potential posts include Valdez Civic Center, MSO Valdez, ADEC Office and Warehouse, Schools, Community College
<b>Logistical</b>	
Docks/Piers	Valdez City Dock, Valdez Container Dock, Valdez Small Boat Harbor, Alyeska Marine Terminal
Shipyards	Seward dry dock
Cranes	Valdez Small Boat Harbor, Valdez Container Dock
Airports	Valdez Airport: 6,500 ft. Asphalt
Aircraft/Helicopter Charter	Alyeska (SERVS): Valdez, 835-6620; ERA Aviation: Valdez, 835-2595; Alaska Airlines: Anchorage, 243-3322; Civil Air Patrol: Valdez, 835-5007
Crew/Freight Boats	Stan Stephens Tours; <i>need to determine others</i>
Reception Facilities for Harmful and Dangerous Cargoes	Alyeska Pipeline Terminal
Divers	R&R Diving Services: Valdez, 835-4375;
Welders	?
Staging Areas	Airport, AKNG Armory, ADEC Warehouse, Harbor, Schools
Communications	Marine VHF, single side band radio, telephone, cellular phone, satellite radio.
Lodging/Shelter	Many commercial lodging facilities are available in Valdez, but in summer may be booked to capacity. Alyeska maintains two man-camps, but alternatives such as RVs, school gyms, Alaska National Guard Armories, etc. may be needed.
Food	Pipeline Club: Valdez, 835-2750; Totem Inn: Valdez, 835-4443; Mike's Palace: Valdez, 835-2365; <i>need to determine others</i>
<b>Other</b>	
Marine Pilots	Southwest Pilots Assn.: Valdez, 835-2134
US Coast Guard MSO	Valdez: 835-7205

Port Valdez Particulars	
	Description
Navigational Approach	Approach using Prince William Sound Vessel Traffic System.
Minimum Water Depths	6 Fathoms (minimum at identified POR-Valdez City Dock)
Maximum Water Depths	133 Fathoms (max. in the Port), 25 Fathoms (max. at identified POR- Valdez Marine Terminal)
Maximum Vessel Draft	60 ft.
Maneuvering/Swing Room	Greater than .5 nm
Docks/Piers	SERVS Dock, Valdez Marine Terminal, Valdez Container Terminal, Valdez City Dock, Unocal Dock
Moorings	SERVS Buoys #1, SERVS Buoys #2
Anchorage	Anderson Bay, Mineral Creek, Gold Creek, West Sawmill Spit
Firefighting Anchorages	Anderson Bay, Mineral Creek, Gold Creek, West Sawmill Spit, SERVS buoys
Grounding Sites	Lowe River mud flats, Gold Creek, Sawmill Spit, Weaver Dock site
Bottom Type	Mud
Prevailing Winds	NE (Oct-April), SW (May-Sept.)
Currents	Currents in the port are negligible except for the entrance through the Valdez Narrows. Current there can reach ? Knots.
Tides	Mean High Water- 11.1 (Higher- 12.1) , Mean Low Water- 1.5 (Lower- -6.0)
Sea Conditions	Port Valdez is sheltered from extreme sea states. Wind in the Port can build seas to a 3 to 4 ft. chop.
Shelter from Severe Storms	Port Valdez is sheltered from storms.
Fog	Fog can occur during all seasons.
Ice	Southern entrance to Valdez Arm can experience ice flow from the Columbia Glacier.

Port Valdez Site Considerations	
	Description
<b>Human Factors</b>	
Communities – distances/population	Valdez is located in Port Valdez- pop. 4,155 (summer population typically can double with the infusion of commercial and sport fishers and tourists)
Cultural Resources	??
Historic Property	Old town site
<b>Environmental Factors</b>	
Wildlife	Waterfowl, sea ducks, sea otters, intertidal spawning salmon, seals, sea lions
Threatened & Endangered Species	Steller's sea lion occur in Port Valdez, but there are no haul outs or rookeries there.
Environmentally Sensitive Areas	Lowe River, Valdez Duck Flats, Shoup Bay, Gold Creek, Mineral Creek, Allison Creek, Sawmill Creek, Anderson Bay
<b>Economic Factors</b>	
Fisheries	Three fish processing plants operate in Valdez. Port Valdez is an important location for both commercial and sport fishing. The local streams and hatchery generate large numbers of pink, chum, and coho salmon. Commercial sein fisheries occur June through August. A large sport fishery for pink and coho salmon occurs in July and August.
Mariculture	Solomon Gulch Hatchery is a major producer of pink, chum, and silver salmon.
Tourism/Recreation	Cruise ships, excursion boats, fishing charters
Public Facilities/Parks	Valdez small boat harbor, City dock, container dock
Private Facilities	6 private RV parks
<b>Response Factors</b>	
Ability to Boom Vessel	Vessels can be boomed at the APSC and City docks.
Geographic Response Strategies	10 GRS in Port Valdez: PWS-NE-13 through PWS-NE-22
Closest Alternative Places of Refuge	Jack Bay, Two Moon Bay, Knowles Head