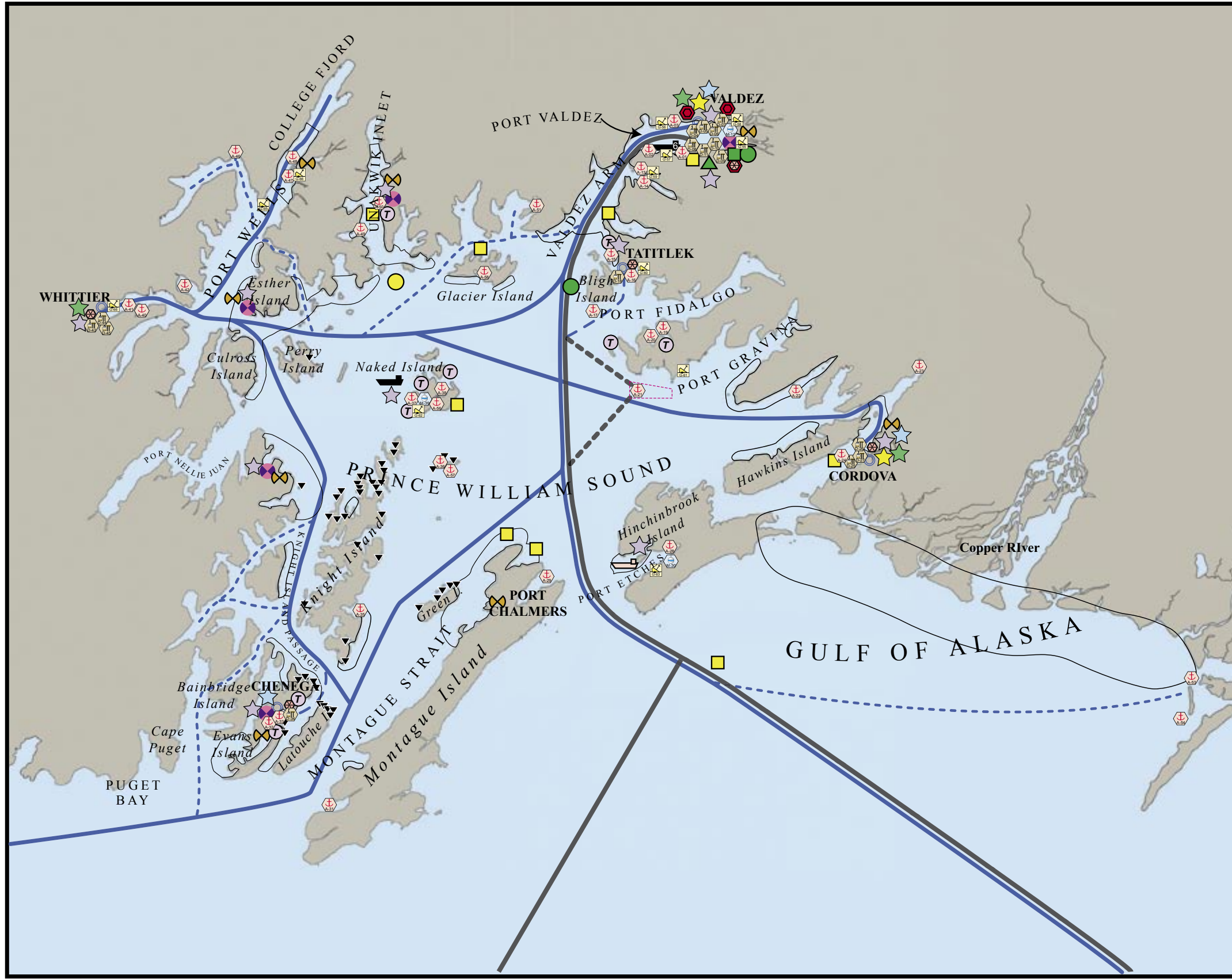


Prince William Sound Alaska

POTENTIAL PLACES OF REFUGE and RISK FACTORS

RISK SYMBOLS

- Anchorage
- Dock
- Mooring
- Grounding
- Potential Places of Refuge
- SERVS
- Chadwick
- USCG
- ADEC
- Response Equipment Depot
- Response Barge
- Seasonal Response Barge
- Tanker Route
- Secondary Tanker Route
- Cruise and AMHS Ship Traffic
- Small Cruise Ship Traffic
- Secondary Ferry Route
- Cruise and AMHS Ship Ports of Call
- BULK FUEL STORAGE SITES**
- .5k-10,000 bbl.
- 10k-39,999 bbl.
- 40k-99,999 bbl.
- 100k-299,999 bbl.
- 300K-500,000 bbl.
- more than 500,000 bbl.
- PWS SUBAREA SPILLS >999 gallons 1989-2004**
- = Persistent
- = Non-Persistent
- 1K-2,999 gal.
- 3K-5,999 gal.
- 6K-8,999 gal.
- 9K-11,999 gal.
- 12K-14,999 gal.
- 15K-17,999 gal.
- 18K+ gal.
- Lingerin Oil from 1989 Exxon Valdez Oil Spill
- Frequent Fishing Vessel/Tramper Offload Activities
- Key Nearshore Fishing Grounds
- Hatchery
- Remote Release Site



Produced by: nuka
 P.O. Box 175
 Seldovia, Alaska 99663
 tel 907.234.7821 • fax 509.278.4406

DRAFT: This map is a draft work product of the PWS Places of Refuge Workgroup. The information represented here has not been approved by the Workgroup and should not be considered final. If you have questions or comments please contact us by email at contact@nukaresearch.com.

Figure H-10. Potential Places of Refuge and all Risk Factors Combined.