

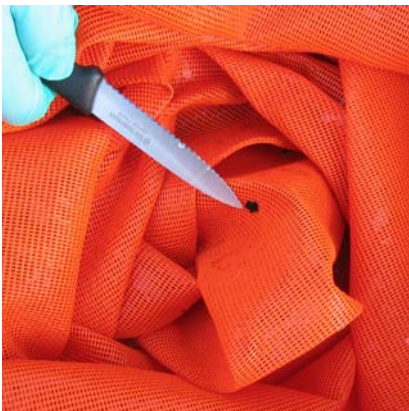
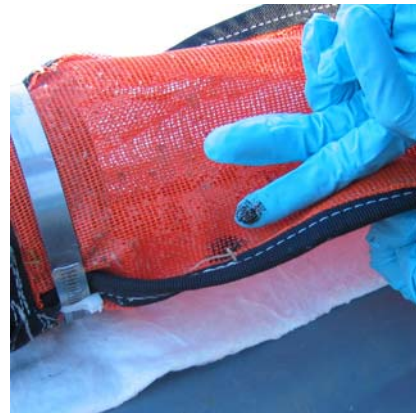
Terminology used in describing oil encountered in tow nets during *Selendang Ayu* fisheries water quality sampling program

In describing results from tow net sampling in Unalaska Bay and other areas, three terms have been used to describe the oil observed on the tow net: stain, smear, and tarball.



Stain = spot of oil that fluoresces under UV light observed on net, but not enough to wipe off with glove or sample.

Smear = oil adhered to net in sufficient quantity to wipe off with a glove but not enough oil to sample for lab analysis.



Tarball = anything larger than a smear, sufficient size to sample for lab analysis.

Please note that the difference between these three types of oil evidence are not necessarily indicative of the total amount of oil encountered in the net, but may in fact have more to do with the length of retention in the tow net. For example, if a tarball is encountered early in a thirty-minute tow, by the time the net is pulled, all that remains as evidence of the encounter may be a smear or stain.