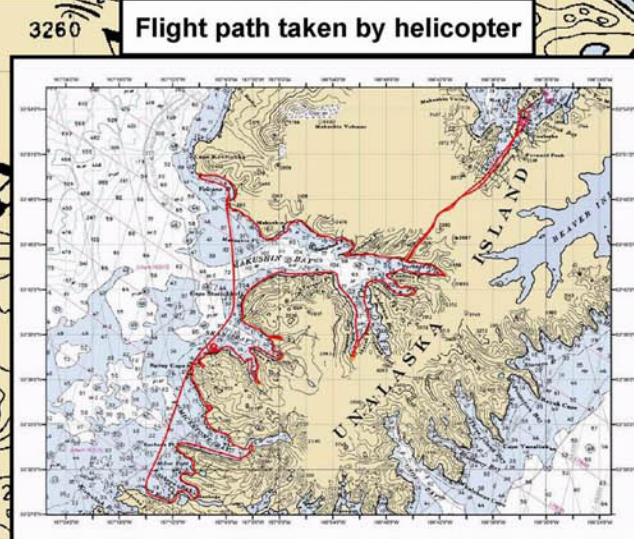
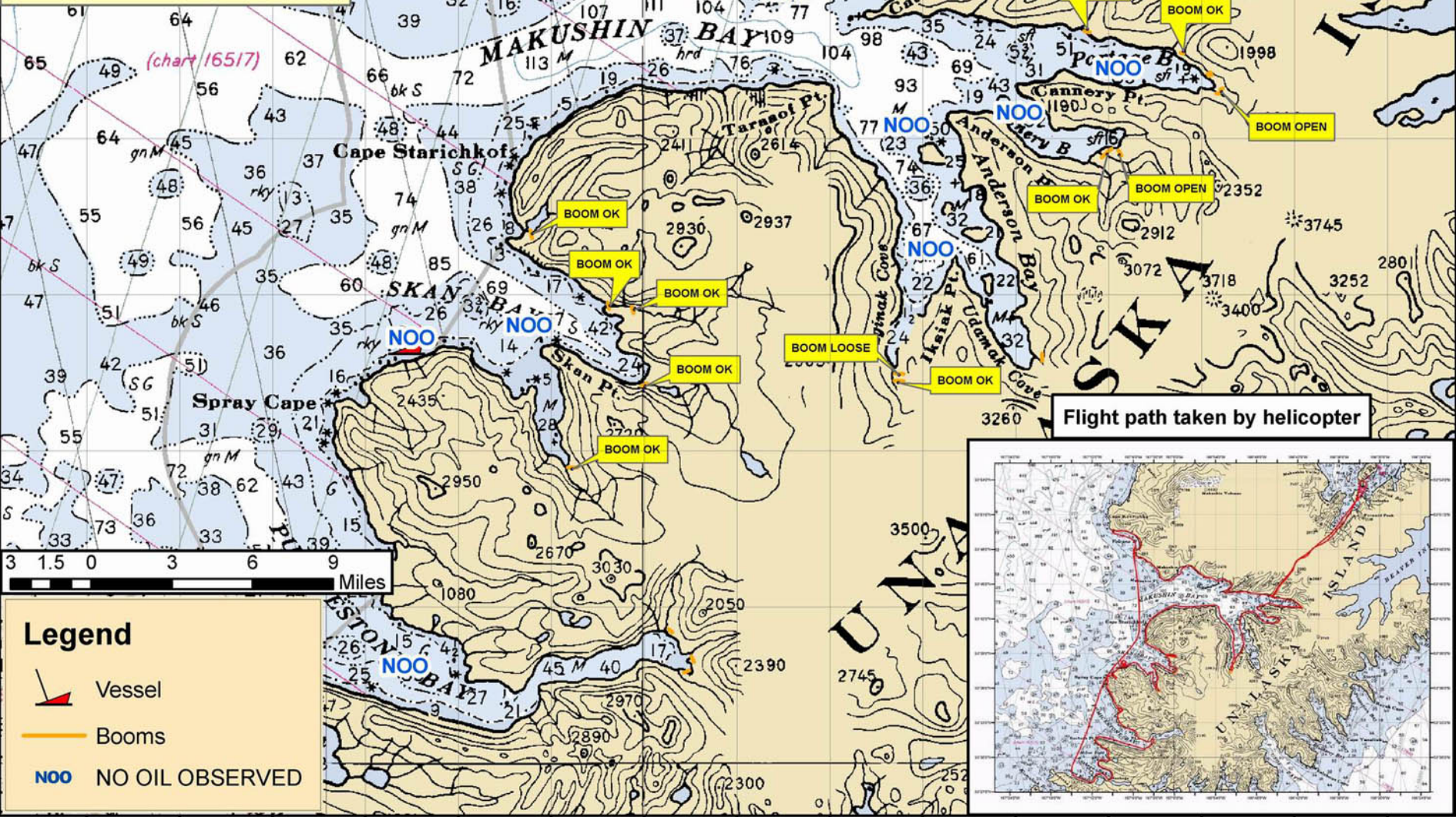


167°18'0"W 167°15'0"W 167°12'0"W 167°9'0"W 167°6'0"W 167°3'0"W 167°0'0"W 166°57'0"W 166°54'0"W 166°51'0"W 166°48'0"W 166°45'0"W 166°42'0"W 166°39'0"W 166°36'0"W

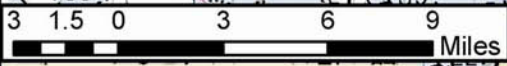


# 15 FEBRUARY 2005 OVERFLIGHT

15 FEBRUARY 2005 1142 - 1333  
PLATFORM: Bell 407 Helicopter  
  
Gary Mauseth - Polaris  
Bob Mattson - ADEC  
LT. Jerome - USCG



Flight path taken by helicopter



**Legend**

-  Vessel
-  Booms
- NOO** NO OIL OBSERVED

167°18'0"W 167°15'0"W 167°12'0"W 167°9'0"W 167°6'0"W 167°3'0"W 167°0'0"W 166°57'0"W 166°54'0"W 166°51'0"W 166°48'0"W 166°45'0"W 166°42'0"W 166°39'0"W 166°36'0"W