

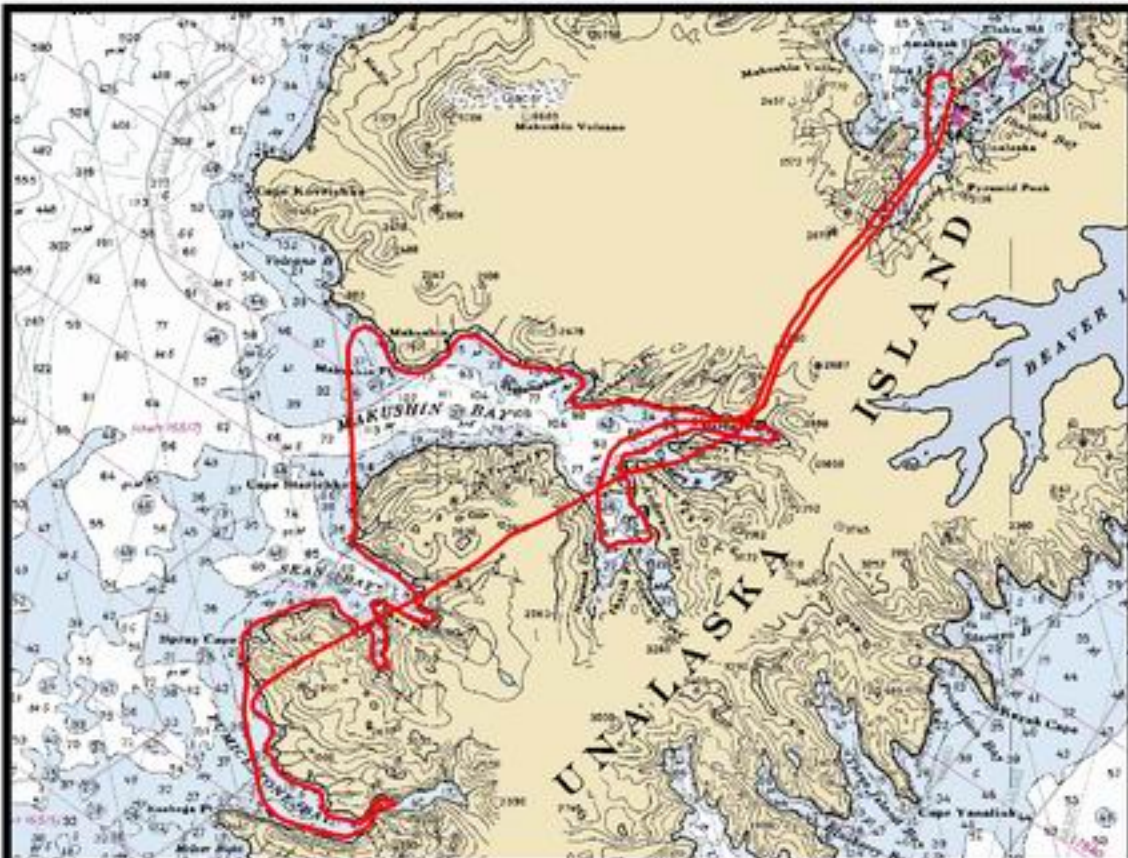
31 MARCH 2005 OVERFLIGHT



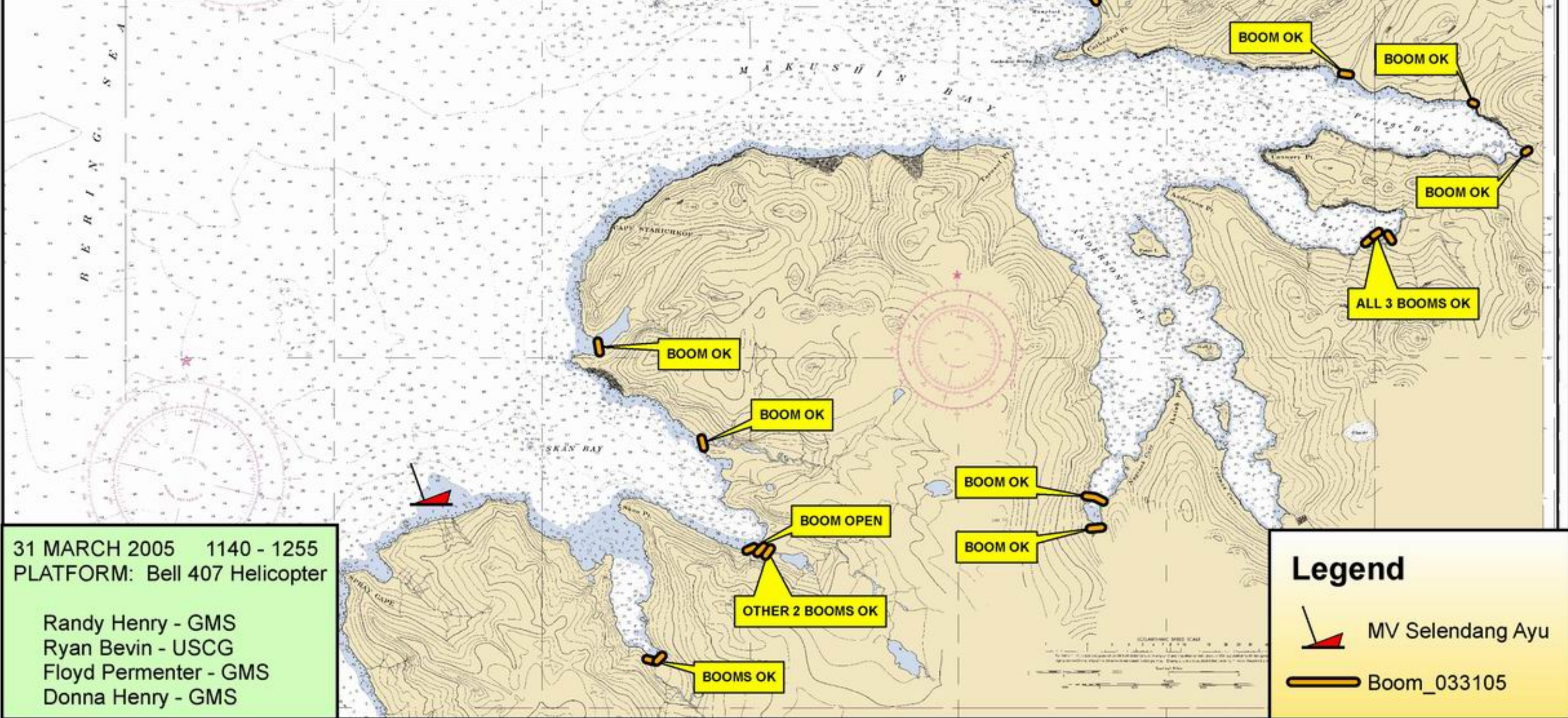
UNITED STATES
ALASKA - ALUTTIK ISLANDS
UNALASKA ISLAND
MAKUSHIN BAY



Note: Back Bays were iced over.
All shorelines were covered in snow.



Flight path taken by helicopter



31 MARCH 2005 1140 - 1255
PLATFORM: Bell 407 Helicopter

Randy Henry - GMS
Ryan Bevin - USCG
Floyd Permenter - GMS
Donna Henry - GMS

Legend

- MV Selendang Ayu
- Boom_033105

