

**M/V SELENDANG AYU INCIDENT
WEEKLY WINTER OPERATIONS REPORT
Report # 7**

For the Week ending: Sunday, April 3, 2005

Prepared by: Planning Section

Date Submitted: April 3, 2005

Special Weather conditions (if any): N/A

1. OVERFLIGHT RESULTS:

(a) Overflight: 31 MAR 2005 (1140-1255)

Observers: R Henry, D. Henry, F. Permenter (GMS), R. Bevin (USCG)

OBSERVATIONS:

Flew the pass both out and back (refer to attached overflight map for detailed flight path and other information). Weather was good; VFR with excellent visibility for majority of flight. Weather turned to cloudy during the flight.

Wreck Site:

M/V SELENDANG AYU wreck site not visibly changed. No sheens were visible in the vicinity of the wreck.

Beach Observations:

(1) Soybean beach at SPR-011 has changed dramatically from the last overflight. The amount of soybean concentration has decreased significantly with only a 90-foot length of shoreline (approximately 20% of the original length) still containing a concentration of soybeans.

(2) Pumicestone Bay contained concentrations of ice in the backside of the bay. The shorelines appeared extremely icy and covered with snow.

(3) A light sheen was observed originating in Skan Bay from SKN-011 and extending approximately ½ mile. All shorelines were icy and covered with snow. No other sheen was observed. Surface ice was observed in the back areas of the bay.

(4) In Anderson Bay, from Makushin Point to Humpback Bay, the shorelines were heavily covered with ice and snow. No sheen was observed. One installed boom at HMP-009 has broken loose at one end.

(5) The shorelines in Portage Bay were heavily covered with ice and snow.

(b) Overflight: 3 APR 2005 (1230-1415)

Observers: L. Johnson, D. Jensen (GMS); G. Folley (ADEC); M Teachout (USCG)

WX: Wind light; VFR weather; partly cloudy with occasional snow squalls.

OBSERVATIONS:

Departed Dutch Harbor and flew the pass both out and back. Conducted shoreline survey beginning at Humpback Bay west to Pumicestone Bay.

Wreck Site:

The wreck remains in same position and attitude. Several minor silver sheens were visible in the vicinity of the submerged bow section.

Beach Observations:

(1) Soybean beach at SPR-011 remained the same as reported in 31 MAR overflight. A minimal soybean plume was observed just offshore the shoreline soybean concentration.

(2) The booms identified during previous overflights in locations at HMP-009, SKN-004 and KSB-007 still need maintenance. Also, the section of boom deployed across the entrance to Naginak Cove (NGE-001) has broken loose from the east shore connection point

(3) Skan Bay showed no sign of visible oil on the shoreline. The marsh area in Skan Bay (SKN-014) has visible oiled vegetation but is not sheening.

(4) The shoreline areas in SKS-001 contain small concentrations of soybeans.

(5) All other installed booms not identified above were positioned properly and in good condition.

2. OTHER REPORTS RECEIVED DURING THE WEEK:

Reports of oil:

No reports were received during the past week.

3. OPERATIONS CONDUCTED DURING THE WEEK:

(a) Protective Boom Maintenance: The booms in SKN-004, KSB-007, HMP-009 and NGE-001, reported as broken loose in last week's report, the 31 MAR and 3 APR overflights have not been reattached due to inclement weather throughout the past week. Maintenance crews will be dispatched to re-attach these three sections as soon as weather and/or helicopter flights allow.

(b) Shoreline Response to reported oil: N/A

(c) Equipment Maintenance: N/A

4. WATER QUALITY MONITORING:

The sampling, inspection and survey work being conducted as part of the winter operations plan concluded on March 25th when the last Unalaska pollock processor completed the seasons catch. The processors will continue to monitor their water intakes as they process cod, halibut, and other fish species during future fish processing activities.

5. SUBSISTENCE WORKING GROUP:

A community subsistence forum will be held at the Unalaska High School April 8-9 to discuss the impacts of the M/V SELENDANG AYU oil spill to local subsistence resources. The community subsistence forum will bring together Unalaska residents, scientists, spill responders, and state/federal agencies to discuss the need for research and sampling to reduce the impacts of the SELENDANG AYU oil spill to traditional use of the shoreline and waters of Unalaska. Owners of the M/V SELENDANG AYU are assisting the group by helping defray the costs involved in holding the event. A meeting is scheduled for Monday, April 4th, to finalize arrangements.

6. PROGRESS ON PREPARATIONS FOR SPRING OPERATIONS:

(A) Vessels: Arrangements (either contracts or charter terms) have been completed for twelve berthing vessels with a total capacity of 236 berths). Negotiations continue for six additional vessels that collectively have an additional 53 berths.

Charter negotiations on barges and other support craft remain in progress.

(B) Communications: The installation of antennae to improve cell service between and to the western bays will be delayed until near the end of April by late arrival of equipment. The FCC permit has been granted. A permit application for land use has been filed with USFWS.

(C) HAZWOPER Training: The first course concluded on 1 April; 29 trainees successfully completed the course. A second course is scheduled for the period 4-8 April; 26 trainees are enrolled.

(D) Other Equipment: N/A

5. PERSONNEL DEVELOPMENTS/CHANGES:

Gary Folley relieved Tom DeRuyter as SOSOC.

Becky Marjerison (ADEC) reported in and assumed duties of Deputy LSC.

Howard Hile is scheduled to return on 4 April and relieve Jack Gallagher as RPIC.

The following GMS Spill Management Team personnel reported in during this past week:

Don Jensen- Planning Section Chief

Nancy Gudonis- Finance Section Chief

Paul Gebert- Resource Unit Leader
Mike Rentel- Air Operations Branch Director

6. OTHER ITEMS TO REPORT: None

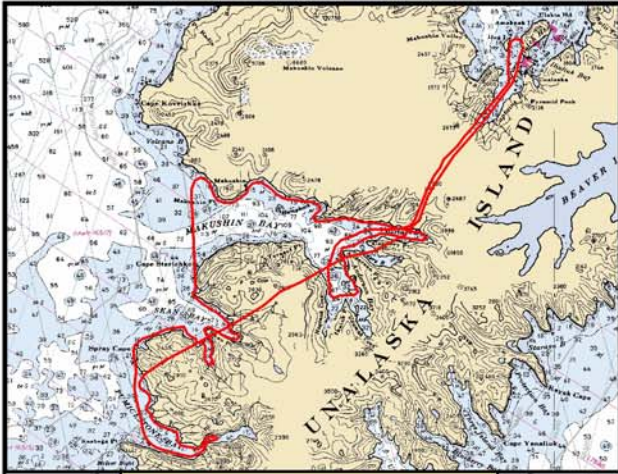
Submitted by:

Jack Gallagher, RPIC/Gary Folley, SOSC

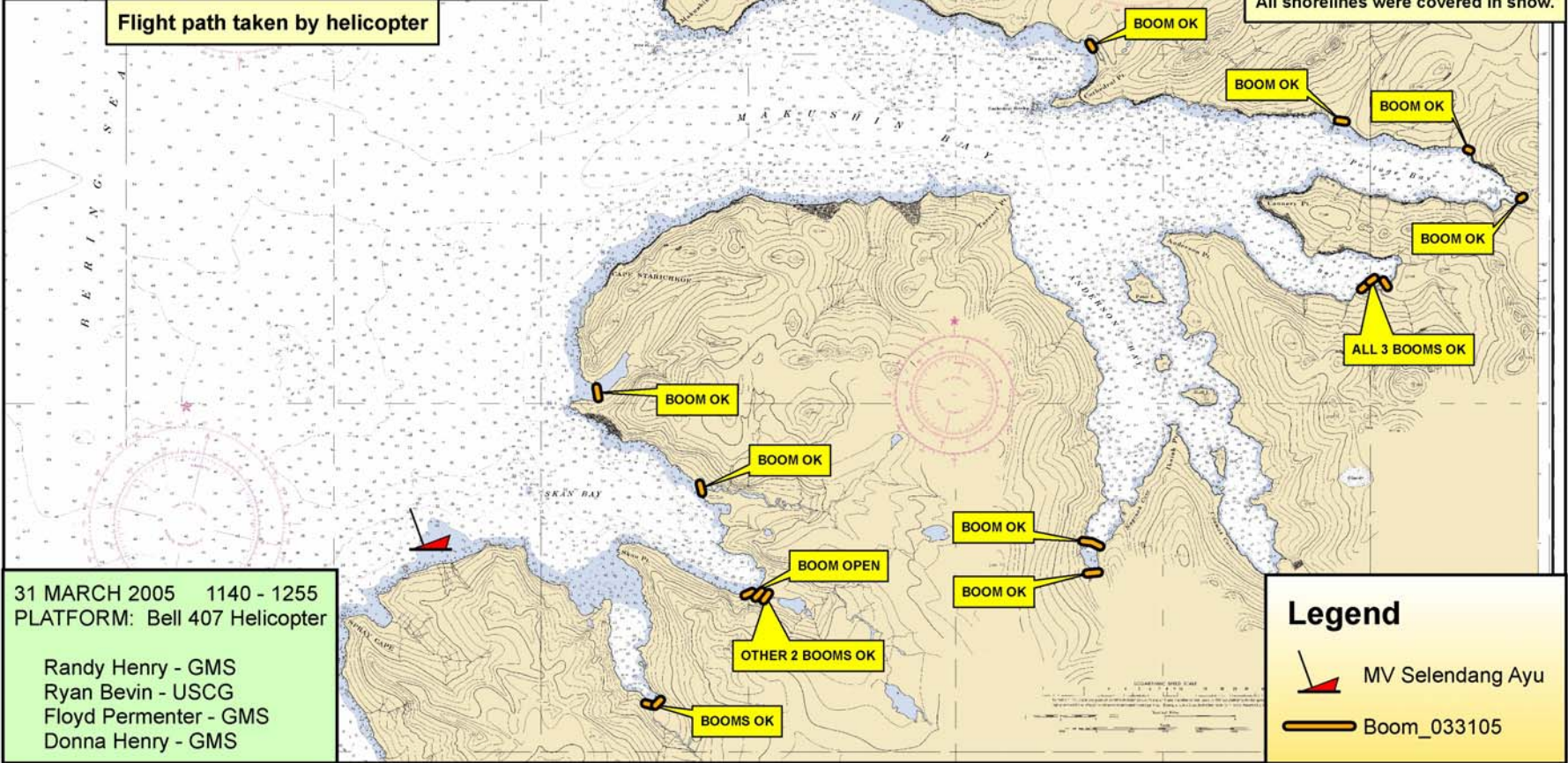
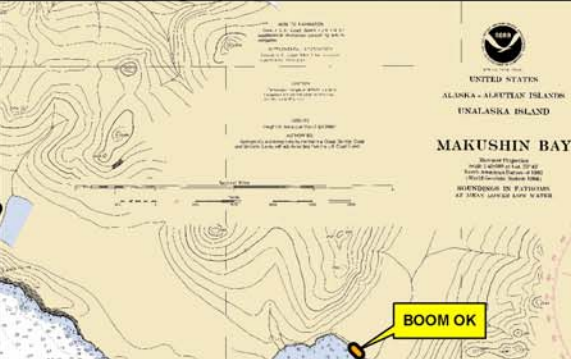
31 MARCH 2005 OVERFLIGHT



Note: Back Bays were iced over. All shorelines were covered in snow.



Flight path taken by helicopter



31 MARCH 2005 1140 - 1255
PLATFORM: Bell 407 Helicopter

Randy Henry - GMS
Ryan Bevin - USCG
Floyd Permenter - GMS
Donna Henry - GMS

Legend

- MV Selendang Ayu
- Boom_033105

