

IAP Cover Sheet

Incident Name:

Drift River Terminal Flooding

Operational Period to be covered by IAP:

Period 1 (3/26/2009 16:00 - 3/27/2009 16:00)

Approved by:

FOSC : _____

Gary Folley

SOSC : *for* _____

RPIC : _____

Incident Action Plan

Volcanic eruption/flooding. Mount Redoubt initially erupted at 10:38 PM on March 22, 2009, followed by several other eruptions. The resultant lahars (or volcanic mudflows) caused extensive flooding at the Drift River Terminal. However, no oil or hazardous substance releases have been reported at this time.



Prepared By:

Prepared Date/Time:

3/26/2009 14:53

IAP Cover Sheet

Printed: 3/26/2009 15:54

© 1997-2009 dbSoft, Inc.

Incident Details

Incident: Drift River Terminal Flooding	Prepared By: Kalyan, Mala	at 3/26/2009 12:55
Period: Period 1 (3/26/2009 16:00 - 3/27/2009 16:00)	Version Name: Default	

Incident Name: Drift River Terminal Flooding

Incident Number: 09239908201

Drill:

Incident Date/Time: 3/22/2009 22:38

Time Zone: Alaska-Hawaii Daylight Time

Organizational Structure Type: Oil Spill

Affected Asset Type: Facility

Affected Asset:

Location: Drift River Terminal, West Side Cook Inlet

Latitude: 60.60000000

Longitude: -152.18333333

Person Reporting Incident: None

Person Contact Number(s):

Incident Description: Mt. Redoubt initially erupted on March 22, 2009 at 10:38 PM, followed by several other eruptions. The lahars or volcanic mud-flows caused extensive flooding at the Drift River Terminal Tank farm. The mud-flows are to a depth of six feet in the area of the runway and ballast tank. Slight overflow was observed into the tertiary containment. Pump houses were observed to be flooded. Numerous drums of petroleum products were scattered west of the ballast tank.

ICS 201-3 - Current Organization

Incident: Drift River Terminal Flooding	Prepared By: Kalyan, Mala	at 3/26/2009 15:30
Period: Period 1 (3/26/2009 16:00 - 3/27/2009 16:00)	Version Name: March26, 2009	

Federal CDR J. Losciuto

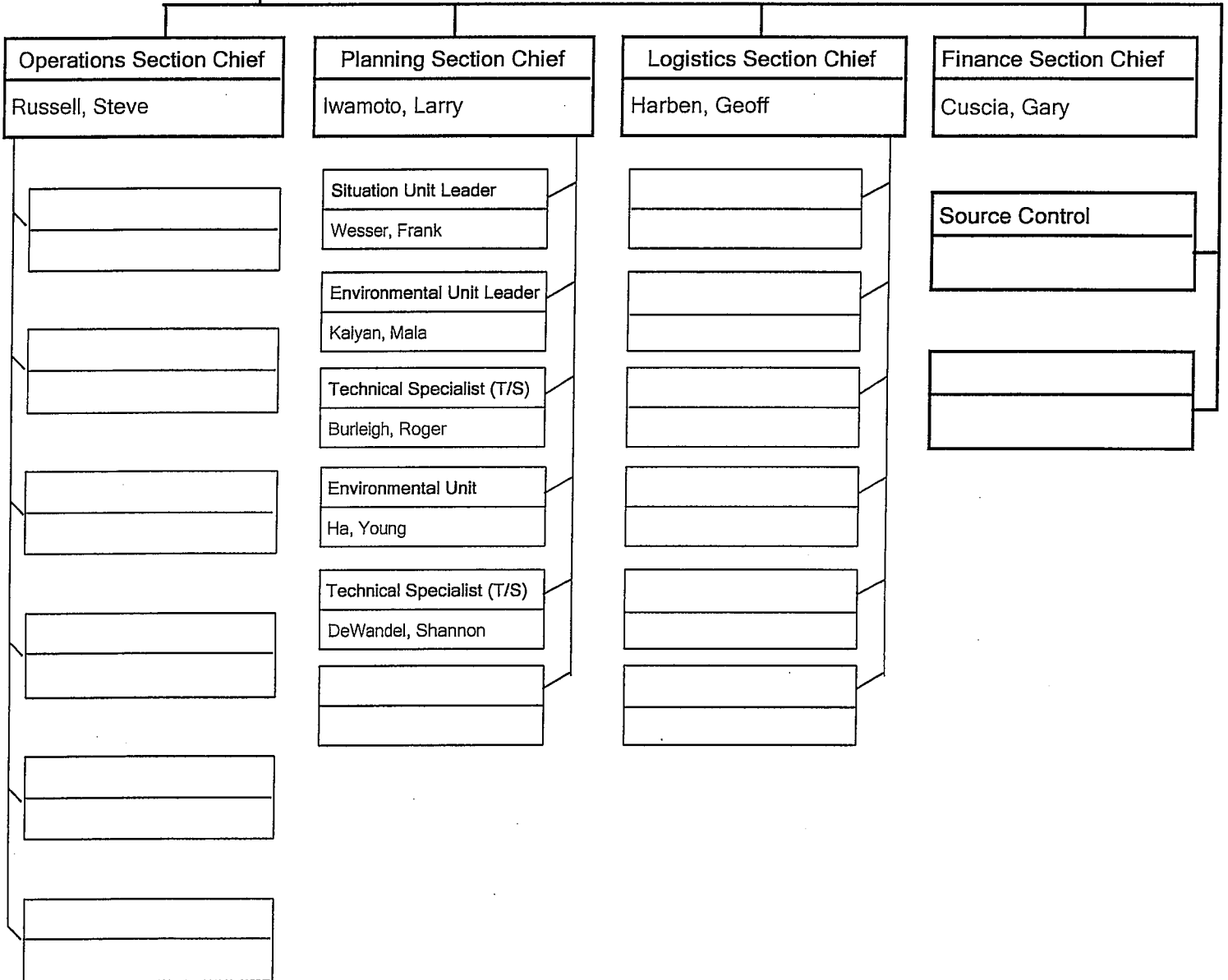
State Folley, Gary

Incident Commander _____

Safety Officer _____

Liaison Officer Gardner, Dale

Information Officer _____



ICS 202 - General Response Objectives

Incident: Drift River Terminal Flooding **Prepared By:** Brown, John **at** 3/26/2009 16:15

Period: Period 1 (3/26/2009 16:00 - 3/27/2009 16:00) **Version Name:** 3/26/2009 13:09

Overall and Strategic Objectives

Assigned To

Status

Ensure the Safety of Citizens and Response Personnel

Monitor Damage Assessment of Drift River Terminal, Tanks, Pipelines, and Cargo Transfer Facility and Pipelines Going to Granite Point

Participate in Overflights

Conduct Bottom Soundings at Tanker Loading Facility for Inbound and Outbound Transits and moorage at the Facility

Coordinate with Alaska Volcano Observatory for Notification of Volcanic Eruptions , and Flood Warnings

Identify Regulatory Requirements, for Facility Restart of Operations

Identify Oil Storage Capacity and Inventory Management of Facilities

Determine Resources at Risk

Monitor Plans and Timeframe for Effecting Repairs Necessary for Resumption of Operations

Identify and Maintain Stakeholder Communications & Engagement

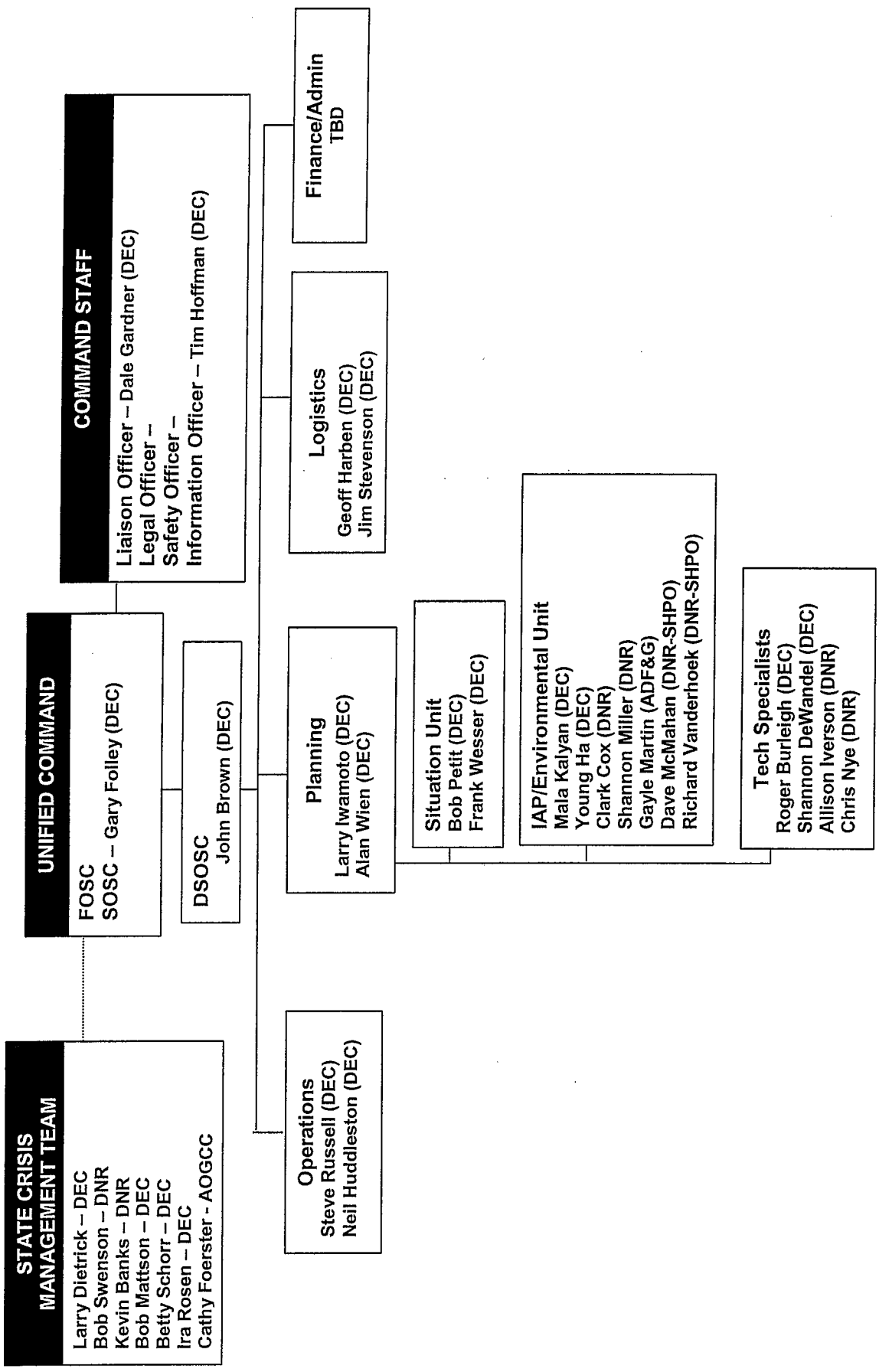
Operational Period Command Emphasis (Safety Message, Priorities, Key Decisions/Directions)

Until a Unified Safety Plan is developed each organization should follow procedures outlined in their own command Safety Manual / Procedures.
Staff need to maintain their ICS 214

Approved By

: _____

Drift River Terminal – Potential Spill Incident State Incident Management Team/Crisis Management Team



RESOURCES AT RISK SUMMARY

Substitute ICS 232-OS form

1. Incident Name: Drift River Facility Flooding
2. Operational Period: from March 26, 2009, 5:00 pm, until revised
3. Environmentally-Sensitive Areas and Wildlife Issues

Site No.	Priority	Site Name / Physical Location	Site Issues
1	HIGH	Redoubt Bay Critical Habitat Area, located north of the Drift River Facility (see attached map)	<ul style="list-style-type: none"> • Waterfowl concentrations in spring and fall, throughout the critical habitat area, and south to Harriet Point, inclusive of the Drift River Facility. • Waterfowl molting concentrations, throughout the critical habitat area, and south to Katchin Creek, inclusive of the Drift River Facility. • Anadromous fish in streams and lakes, including in Drift River • Shorebird concentrations in spring and fall, throughout the critical habitat area, and south, inclusive of the Drift River Facility. • Harbor seal haulout concentrations, at least 1 site within the critical habitat area. • Brown bear concentrations in summer and fall, throughout the critical habitat area, and south, inclusive of the Drift River Facility. • Black bear concentrations in spring, throughout the critical habitat area, and south, inclusive of the Drift River Facility. • Beluga whale feeding in nearshore waters.
2	HIGH	Kalgin Island and Kalgin Island Critical Habitat Area, located southeast of the Drift River Facility in Cook Inlet	<ul style="list-style-type: none"> • Harbor seal haulout concentrations, at least two sites • Streams and lakes with

			<p>anadromous fish</p> <ul style="list-style-type: none"> • Waterfowl concentrations in spring and fall
3	HIGH	Trading Bay State Game Refuge, located north of Redoubt Bay Critical Habitat Area	<ul style="list-style-type: none"> • Waterfowl concentrations in spring, along the coast and up to three miles inland • Waterfowl concentrations in fall, throughout the refuge. • Waterfowl concentrations during molting, throughout the refuge. • Bear concentrations in spring, throughout the refuge • Streams and lakes with anadromous fish • Shorebird concentrations in spring and fall, throughout the refuge. • Beluga whales feeding in nearshore waters. • Seabird concentrations, McArthur Flats.
4	HIGH	Clam Gulch Critical Habitat Area, located across Cook Inlet from the Drift River Facility to the east	<ul style="list-style-type: none"> • Waterfowl concentrations in spring, in area between Clam Gulch and Kasilof. • Waterfowl concentrations in fall, in area north and west of Kasilof. • Waterfowl concentrations in winter, near Cape Starichkof • Streams and lakes with anadromous fish • Razor clam concentrations, along coast from Cape Kasilof south to Cape Starichkof. • Seabird concentrations near mouth of Kasilof River.
5	HIGH	Mouth of the Kenai River, located across Cook Inlet from the Drift River Facility to the east	<ul style="list-style-type: none"> • Waterfowl concentrations in spring and summer • Beluga whale concentrations in spring, summer and fall, at the mouth of the Kenai River and in the marine environment outside of the mouth. • Anadromous fish streams.

			<ul style="list-style-type: none"> • Shorebird concentrations in spring at the mouth of the Kenai River. • Seabird colonies are found at the mouth of the Kenai River.
--	--	--	--

Narrative

Other most environmentally sensitive areas in Cook Inlet, further from the Drift River Facility, but still situated in the path of a potential oil spill include:

- Barren Islands
- Chinik Head to Silver Beach (Kamishak Bay)
- Susitna Flats and Susitna Flats State Game Refuge
- Anchorage Flats and Anchorage Coastal Wildlife Refuge
- Goose Bay State Game Refuge
- Palmer Hay Flats State Game Refuge
- Kachemak Bay Critical Habitat Area and Fox River Critical Habitat Area

A map showing environmentally sensitive areas for spring (April – May) can be found at: <http://www.asgdc.state.ak.us/maps/cplans/cook/PDFS/SPRING.PDF>

Individual maps of most environmentally sensitive areas for Cook Inlet can be accessed at:

<http://www.asgdc.state.ak.us/maps/cplans/subareas.html#cook>

4. Archaeo-cultural and Socio-economic issues: No subsistence information has yet been compiled. Archaeo-cultural issues are being reported upon by ADNR.
5. Prepared by: Gayle Martin, ADF&G – Habitat, on March 26, 2009 at 5:00 pm.



Redoubt Bay
Critical Habitat Area

16.13 mi

Image © 2009 GeoEye
Image © 2009 TerraMetrics
Data SIO, NOAA, U.S. Navy, NGA, GEBCO
Image © 2009 DigitalGlobe
60° 42.510' N 152° 4.503' W

©2009 Google
Eye alt 55.45 mi