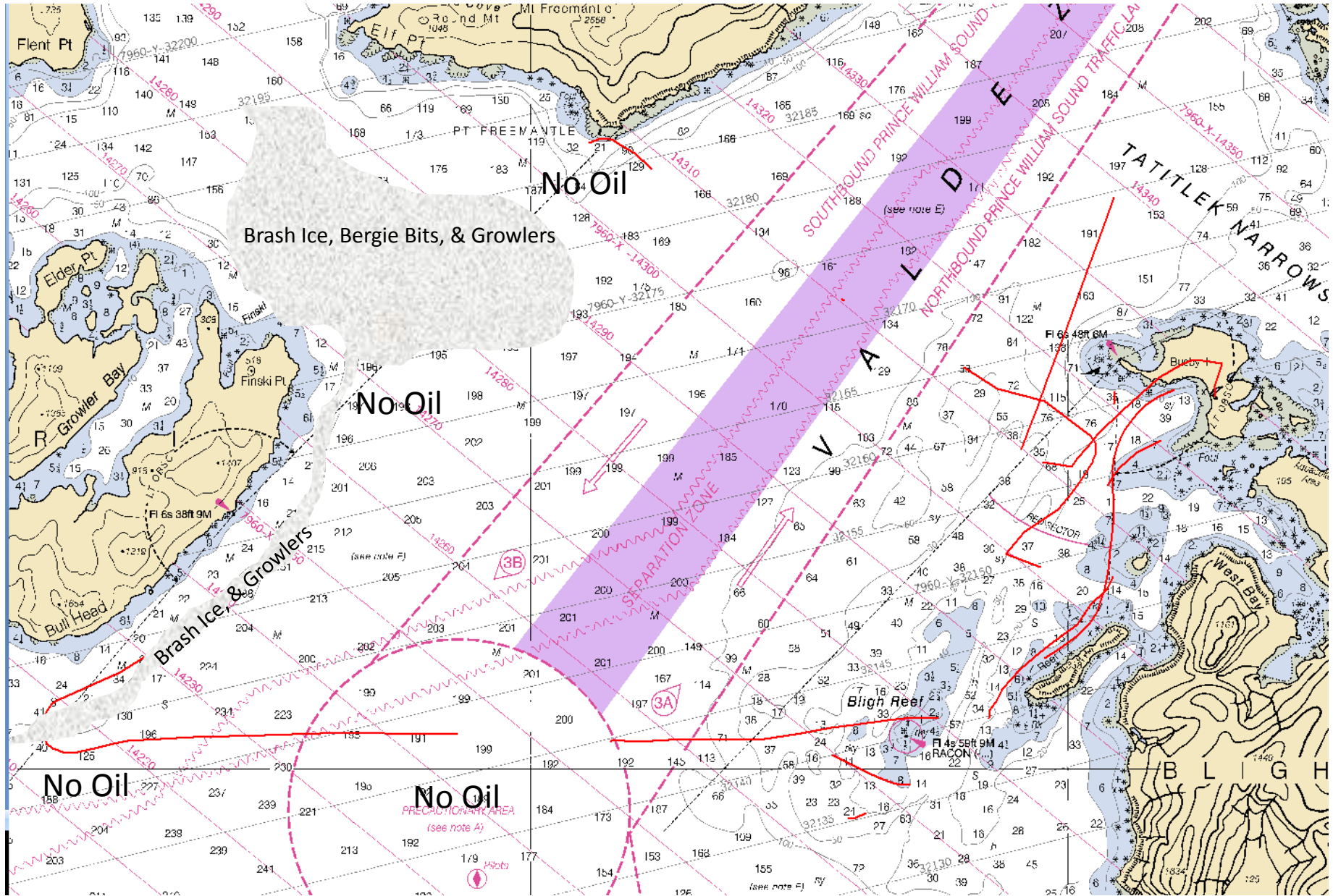
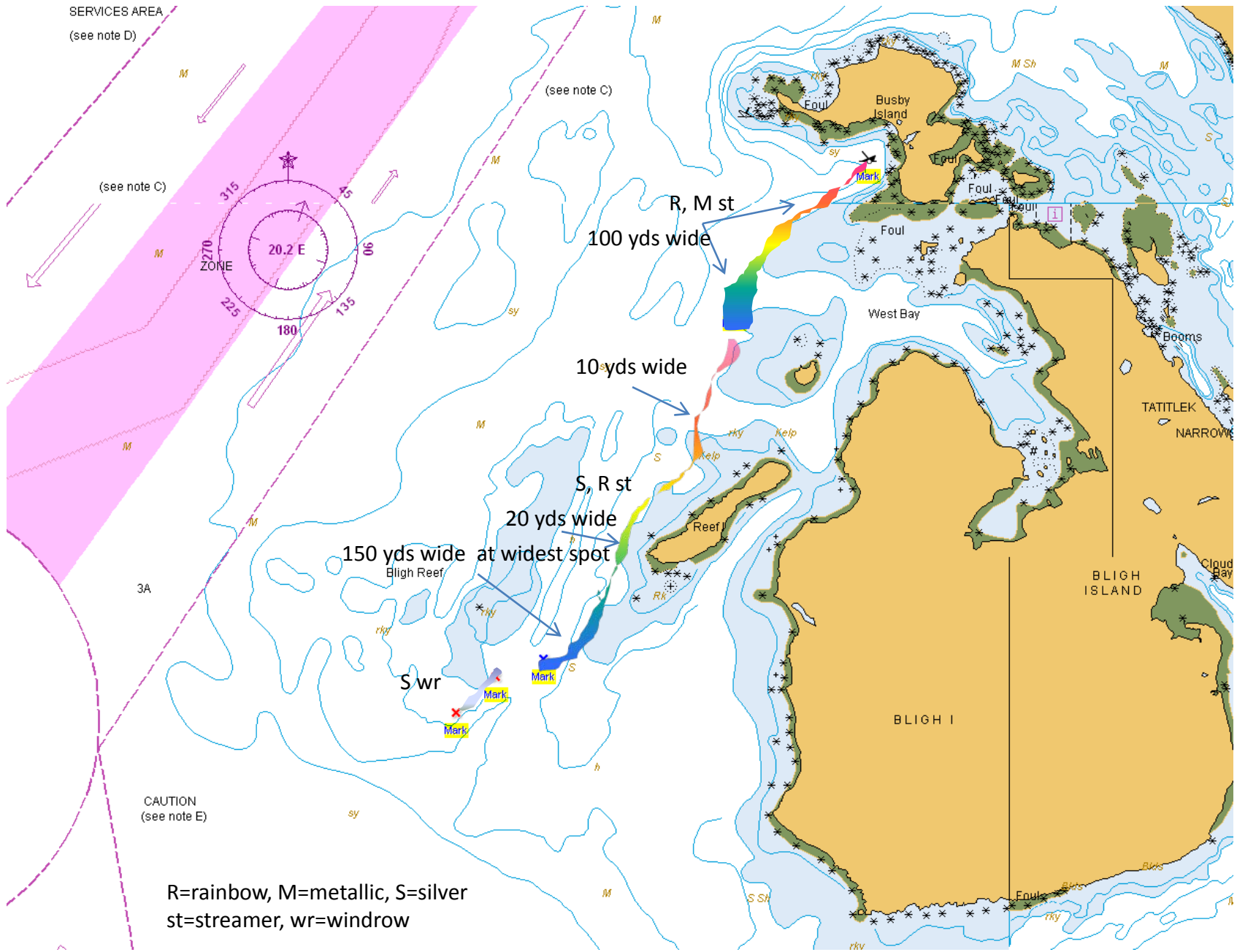


Helo Flight Track 12/25/09 1010 – 1426 local time



Helo Overflight 12/25/09 1010 – 1426 local time



SERVICES AREA
(see note D)

(see note C)

(see note C)

R, M st

100 yds wide

10 yds wide

S, R st

20 yds wide

150 yds wide at widest spot

CAUTION
(see note E)

R=rainbow, M=metallic, S=silver
st=streamer, wr=windrow