



ALASKA DEPARTMENT OF ENVIRONMENTAL CONSERVATION
Division of Spill Prevention and Response
Prevention, Preparedness and Response Program

SITUATION REPORT



CHANGES FROM PREVIOUS SITUATION REPORT DENOTED IN RED TEXT.

Pogo Mine Paste Backfill Line Rupture

SITREP # 1 (revised) and Final

SPILL #: 15309912701

TIME/DATE OF DISTRIBUTION: 10:00 a.m. on May 11, 2015

POTENTIAL RESPONSIBLE PARTY (PRP): Sumitomo Metal Mining Pogo, LLC. (Pogo)

INCIDENT LOCATION: The release occurred within the mine site from two different locations. The primary release point was an eight inch line used to inject the paste backfill underground. This release point is approx. 100 yards upgradient from the 1690 portal (Fig. 1). The secondary release occurred from a valve inside the Tank 32B Pump House (Fig. 1) located on the mill bench.

TIME/DATE OF SPILL: Pogo employees discovered the spill at 7:30 a.m. on May 7, 2015 and reported the spill to ADEC at 1:47pm.

TYPE/AMOUNT OF PRODUCT SPILLED: "Paste backfill" contains 1-3 parts-per-million weak acid dissociable cyanide (CAS # 57-12-5) and has a pH of 10-12. It consists of milled tailings mixed with cement to create a paste, and it is disposed by backfilling mined-out tunnels. When in place underground, the paste backfill cures forming concrete, which offers support to the underground workings. Pogo estimates a total spill volume of 90,000 gallons, of which an estimated 36,000 gallons **was released outside of impermeable secondary containment onto the 1690 portal bench (Fig. 2).**

CAUSE OF SPILL: Pogo believes a ruptured eight inch paste backfill line was the cause of the primary release.

SOURCE CONTROL: The paste backfill line was shut down and is partially filled with solidified paste (cement), thereby controlling the source.

RESPONSE ACTION: Due to the high viscosity of the paste, as well as its automatic solidifying mechanism, the spill is currently contained on a gravel pad and the likelihood of migration off-pad through naturally occurring processes is negligible. After the solidifying process is complete, Pogo personnel will remove the released product using heavy equipment and hand tools.

RESOURCES AFFECTED: Gravel pad adjacent to release point. **ADEC responders confirmed on May 8, 2015 that the nearby Liese Creek has not been impacted. During the initial response effort, gravel berms were erected to prevent any further migration of spilled product.**

FUTURE PLANS AND RECOMMENDATIONS: ADEC will continue to monitor the response actions and review plans being developed to clean up affected gravel outside the secondary containment. Pogo is conducting an investigation to identify the cause of the spill.

WEATHER: Today: Cloudy skies; highs around 57°F; west-southwest winds at 10-15 mph. Tomorrow: Partly cloudy skies; highs around 61°F; west-northwest winds at 5-10 mph.

UNIFIED COMMAND AND PERSONNEL:

Incident Commander: Keri DePalma, Sumitomo Metal Mining Pogo, LLC.

Deputy Incident Commander: Leif Christensen, Sumitomo Metal Mining Pogo, LLC

SOSC: Tom DeRuyter, ADEC

TIME/DATE OF THE NEXT REPORT DISTRIBUTION: This is the final report.

FOR ADDITIONAL INFORMATION CONTACT: Tom DeRuyter, SOSC, ADEC (907) 451-2145

https://dec.alaska.gov/spar/perp/response/sr_active.htm

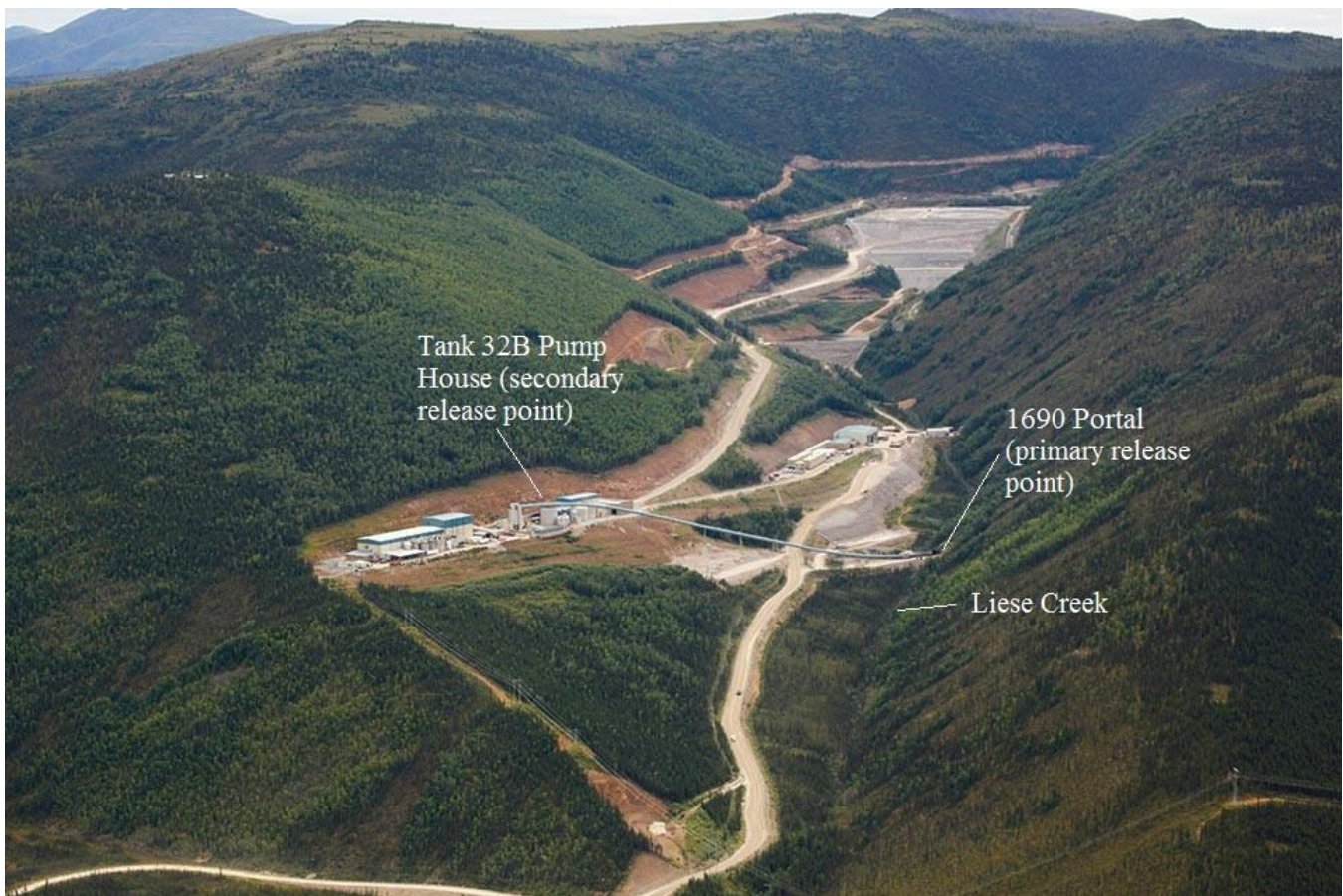


Figure 1. Aerial image of Pogo Mine, both release sites marked (Photo/maptek.com¹)

¹ http://www.maptek.com/images/forge/jun_2014/vulcan_custom_scripting_1.jpg



Figure 2. Backfill paste released inside and outside containment by 1690 portal module (Photo/ADEC)

AGENCY/STAKEHOLDER NOTIFICATION LIST: This situation report was distributed to the agencies listed on the standard distribution list, which includes the governor's office, Senator Sullivan's office, State Emergency Operations Center, U.S. Department of the Interior, National Marine Fisheries Service, U.S. Fish and Wildlife Service, and other state agencies. This situation report was also distributed to the following agencies and stakeholders:

AGENCY / STAKEHOLDER	NAME	SENT VIA	ADDITIONAL INFORMATION	TELEPHONE	FAX
Sumitomo Metal Mining Pogo, LLC.	Keri DePalma	Email	keri.depalma@smpogo.com	895-2879	
Senate C	Click Bishop	Email	Senator.click.bishop@akleg.gov Juneau (1/18-4/15) Fairbanks (4/20-1/15)	465-2327 456-8161	465-5241 456-8163
House 6	Dave Talerico	Email	Representative.dave.talerico@akleg.gov	465-4527	465-2197
Senate T	Donny Olson	Email	Senator.Donny.Olson@akleg.gov Juneau (1/18-4/15) Anchorage (4/20-1/15)	465-3707 269-0254	465-4821 269-2031
House 39	Neal Foster	Fax	Representative.neal.foster@akleg.gov Juneau (1/18-4/15) Nome (4/20-1/15)	465-3789 443-5036	465-3242 443-2162
Senate A	John Coghill	Email	Senator.john.coghill@akleg.gov Juneau (1/18-4/15) Fairbanks (4/20-1/15)	465-3719 451-2157	465-3258
House 1	Scott Kawasaki	Fax	Representative.scott.kawasaki@akleg.gov Juneau (1/18-4/15) Fairbanks (4/20-1/15)	465-3466 456-7423	465-2937 451-9293
Alaska State Troopers	Delta Junction	Fax		895-4800	895-4026
Alaska State Troopers	Tok	Fax		883-5111	883-4249
USCG-Sector /ANC	USCG-Anchorage	Fax		428-4100	428-4114 (24 hr)
US EPA	Bob Whittier	Email	Whittier.robert@epa.gov	206-553-1263 or 206-553-1264	271-3424
ADF&G	Al Ott / Jack Winters	Email	al.ott@alaska.gov jack.winters@alaska.gov	459-7289 or 459-7285	
Dept of Law Attorney General Office	Steven Mulder	Fax/Email	Steve.mulder@alaska.gov	269-5274	278-7022