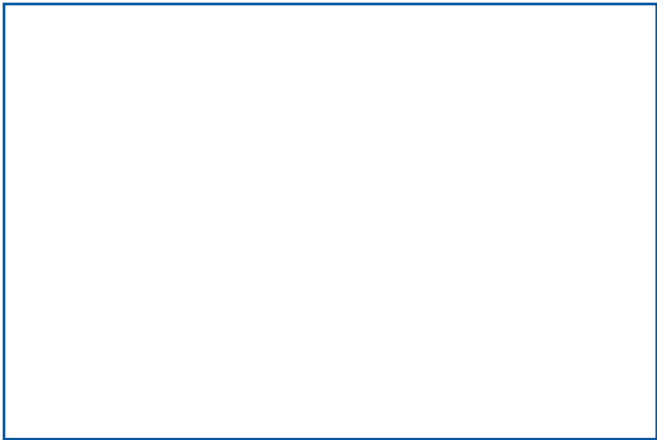




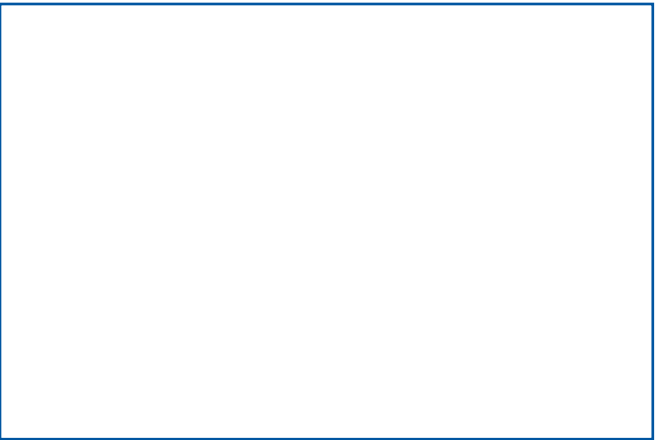
caption.



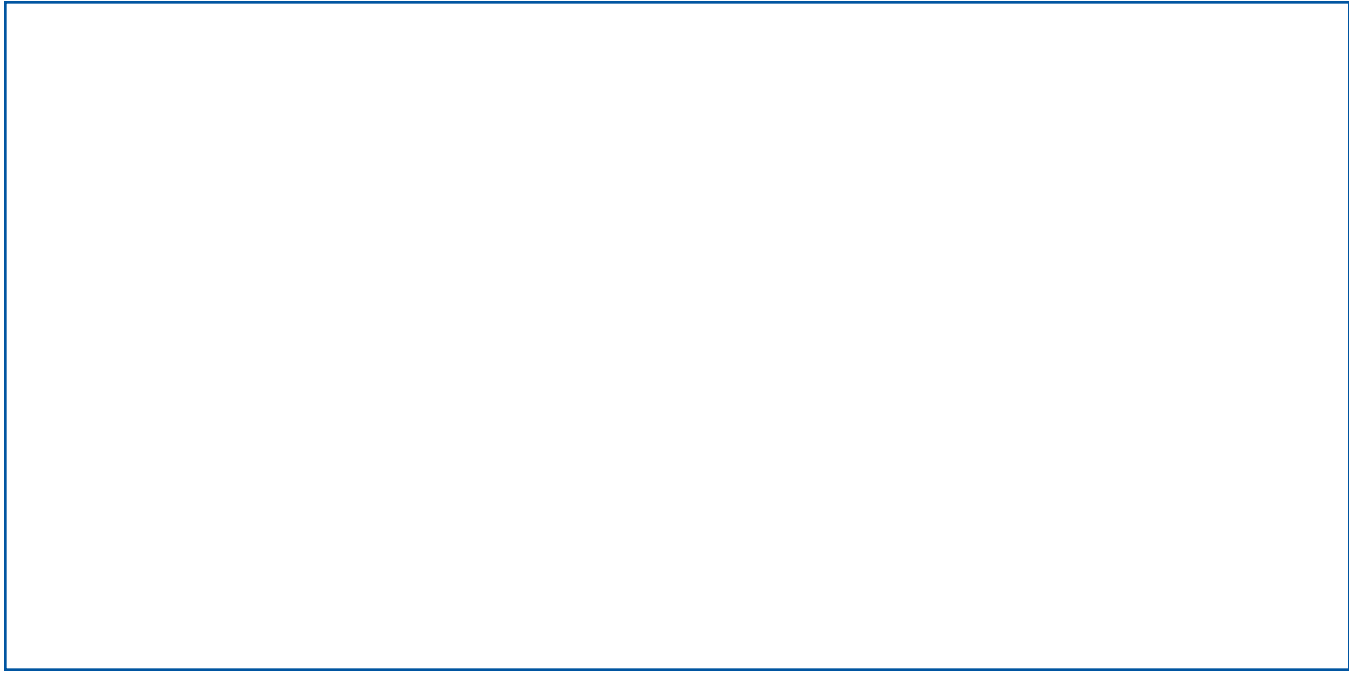
caption.



caption.

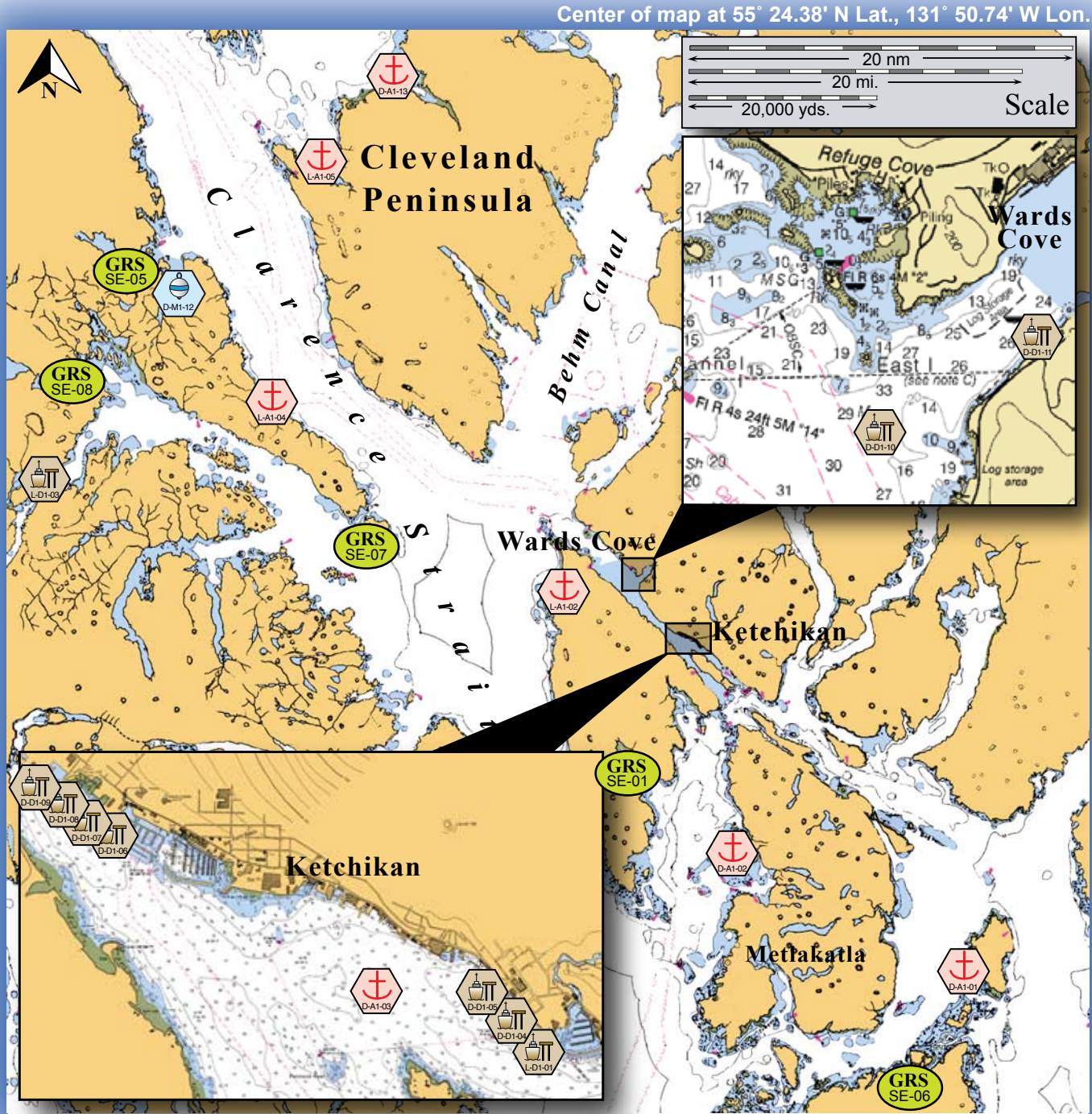


caption.



caption.

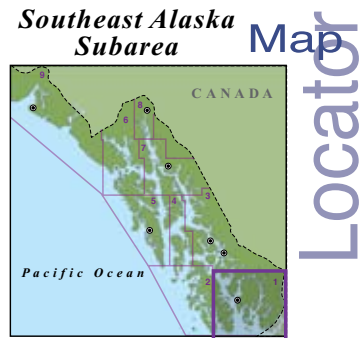
Potential Places of Refuge for Southeast Alaska Subarea



Center of map at 55° 24.38' N Lat., 131° 50.74' W Lon.

This is not intended for navigational use.

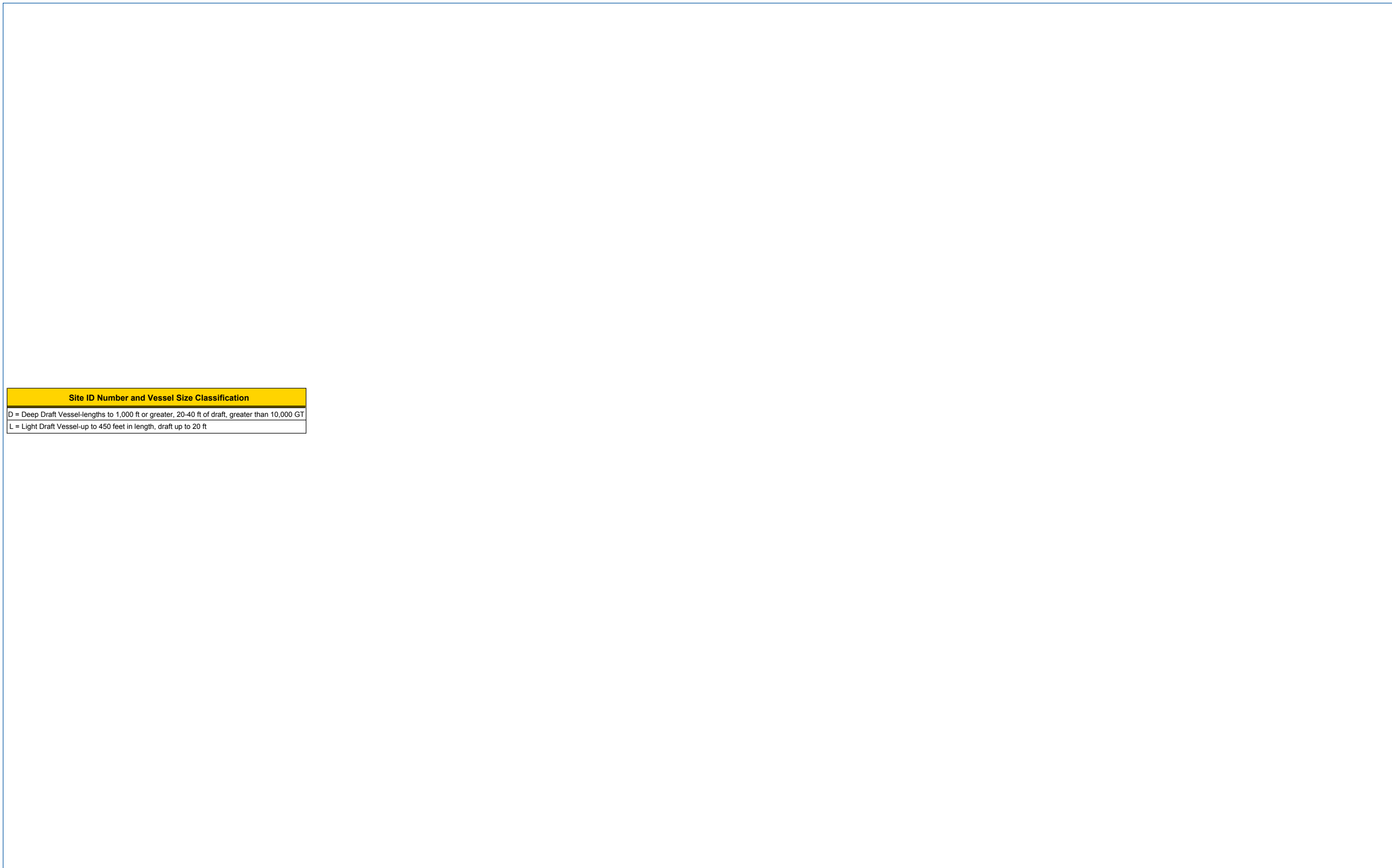
Soundings in fathoms



	Anchorage		Existing GRS
	Mooring		Fish Hatchery
	Dock/pier		Private Cabins
	Crane		Public Use Cabins
	Airport		Boat Harbor

# Southeast PPOR Map 01

USGS 1:229,376K Quadrangle Map Reference - Hecate Strait to Etolin Island 17420



Site ID Number and Vessel Size Classification
D = Deep Draft Vessel-lengths to 1,000 ft or greater, 20-40 ft of draft, greater than 10,000 GT
L = Light Draft Vessel-up to 450 feet in length, draft up to 20 ft