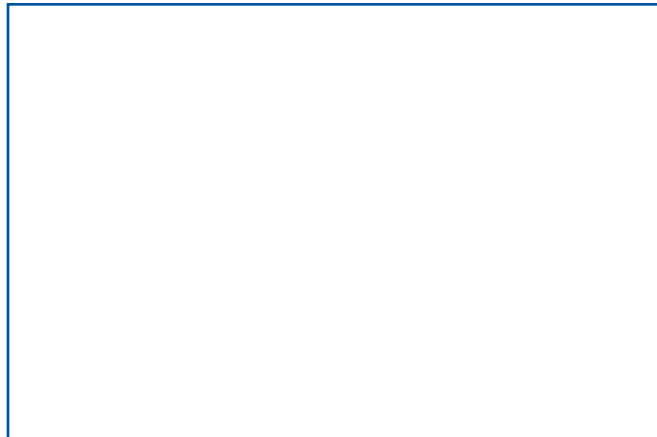
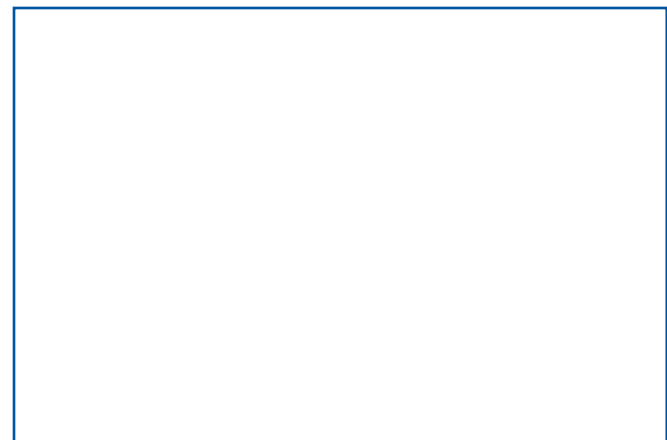


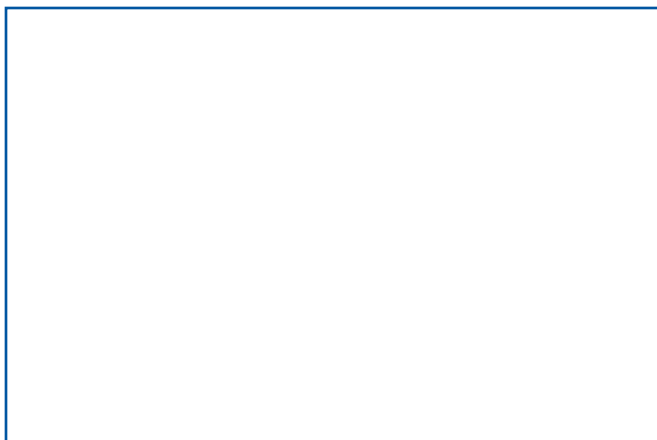
caption.



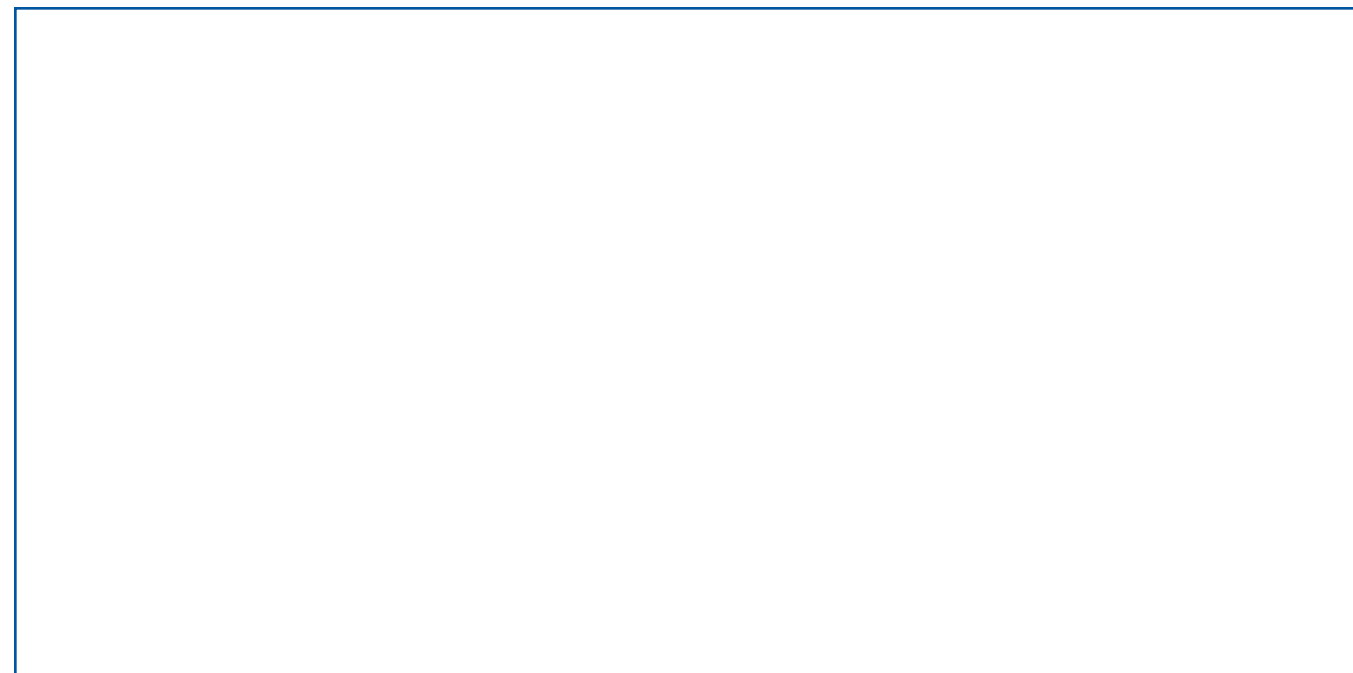
caption.



caption.



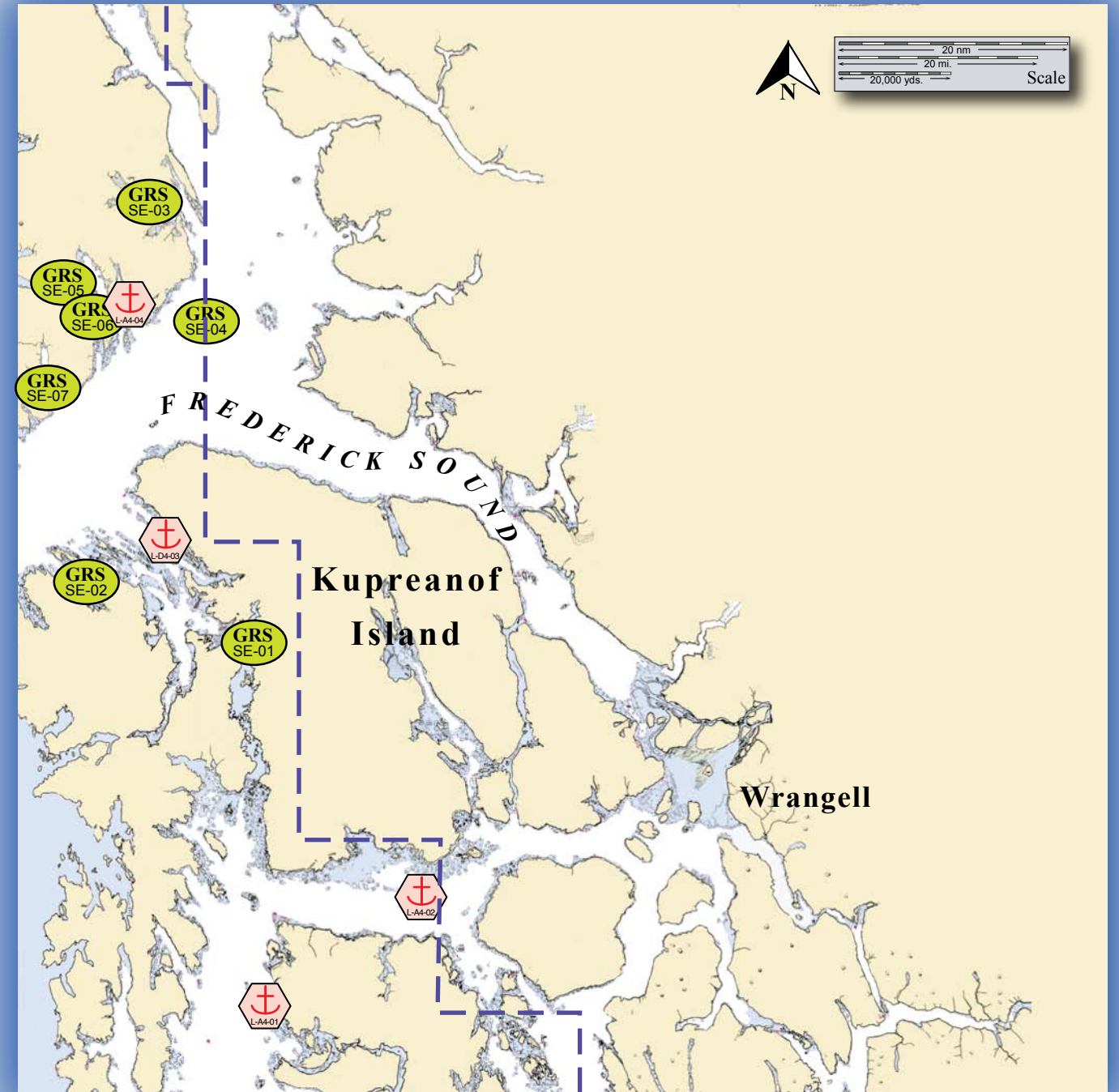
caption.



caption.

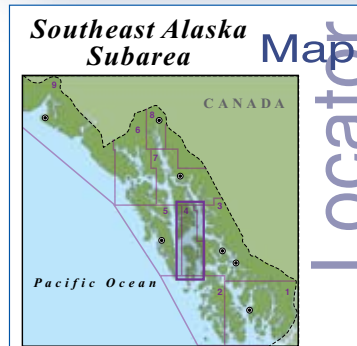
Potential Places of Refuge for Southeast Alaska Subarea

Center of map at 56° 54.75' N Lat., 132° 48.61' W Lon.



This is not intended for navigational use.

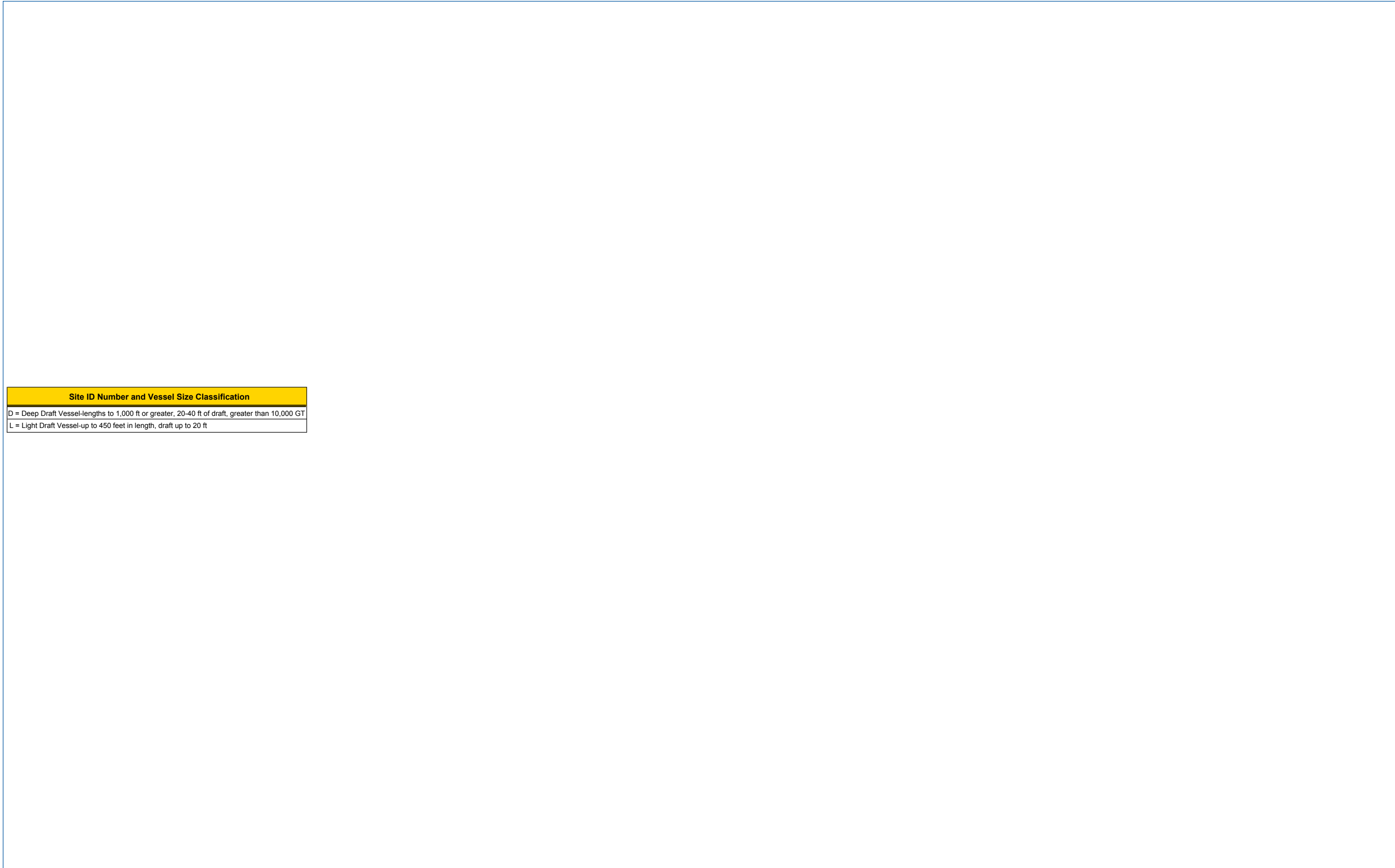
Soundings in fathoms



	Anchorage		Existing GRS
	Mooring		Fish Hatchery
	Dock/pier		Private Cabins
	Crane		Public Use Cabins
	Airport		Boat Harbor

Southeast PPOR Map 04

USGS 1:217,828K Quadrangle Map Reference - Etolin Isl to Midway Isl Including Sumner Strait 17360_1



Site ID Number and Vessel Size Classification
D = Deep Draft Vessel-lengths to 1,000 ft or greater, 20-40 ft of draft, greater than 10,000 GT
L = Light Draft Vessel-up to 450 feet in length, draft up to 20 ft