



Crab Bay, Klawock & Craig viewed from the north.



Admiralty Mine dock viewed from the north.



Craig viewed from the north.

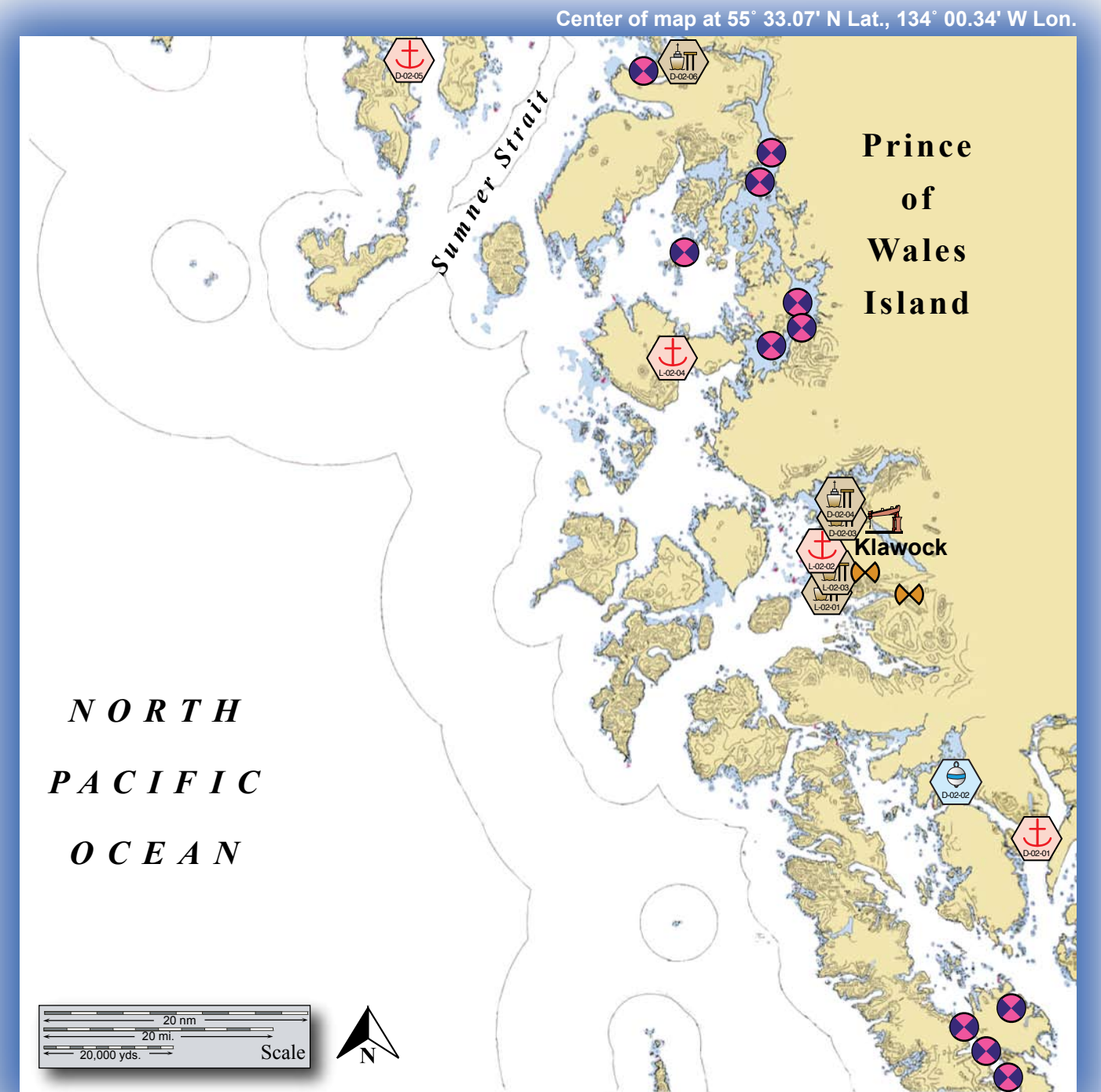


Saltery Point Moorage viewed from the north.



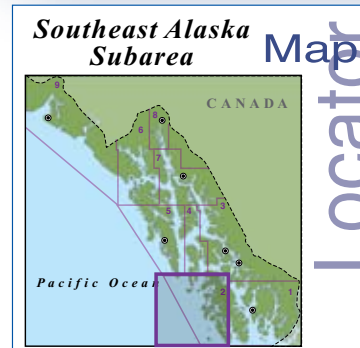
Klawock D-02-03, Mill Dock, & D-02-04, AML Dock viewed from the southwest.

Potential Places of Refuge for Southeast Alaska Subarea



This is not intended for navigational use.

Soundings in fathoms



	Anchorage		Existing GRS
	Mooring		Fish Hatchery
	Dock/pier		Aquatic Farms
	Crane		Private Cabins
	Airport		Public Use Cabins
			Boat Harbor

Southeast PPOR Map 02
 USGS 1:229,376K Quadrangle
 Map Reference - Dixon Entrance to Chatham Strait 17400_1

Site Considerations for PPOR Zone 02 of the Southeast Alaska Subarea										
	Alder Cove Anchorage	Saltery Point Moorage	Klawock Mill Dock	Klawock AML Dock	Kell Bay	Admiralty Mine Dock	Craig City Dock	Crab Bay Anchorage	Petro-Marine Dock	Warm Chuck Inlet
ID Number	D-02-01	D-02-02	D-02-03	D-02-04	D-02-05	D-02-06	L-2-01	L-2-02	L-2-03	L-2-04
Human Health & Safety										
Community-distance to (nm)	7 to Hydaburg	1.5 to Hydaburg	0 to Klawock	0 to Klawock	55 to Craig	63 to Craig	0 to Craig	0.3 to Craig	0 to Craig	22 to Craig
Health Care Facilities	Clinic Services in Hydaburg		Clinic Services in Klawock			Clinic services in Craig				
Natural Resources Considerations										
Fish & Wildlife	Spawning salmon & herring, seals, waterfowl	Spawning salmon, seals, waterfowl	Spawning salmon & herring, seals, waterfowl		Spawning salmon, seals, waterfowl		Spawning salmon & herring, seals, waterfowl		Spawning salmon, seals, waterfowl	
Threatened & Endangered Species	None (2010)									
Sensitive Areas	Not Designated	Saltery Point-Crab Trap Cove Area Meriting Special Attention	Not Designated				Adjacent area designated important habitat by Craig Coastal Management Program		Not Designated	
Other Stakeholder Considerations										
Fisheries	Salmon, Groundfish, Crab	Salmon, Groundfish, Crab	Salmon, Herring, Groundfish, Crab		Salmon, Groundfish, Crab		Salmon, Herring, Groundfish, Crab		Salmon, Groundfish, Crab	
Historic Properties	Historic Properties are present throughout the area.									
Mariculture*	None	None	Hatchery operations in the area.		None	Mariculture activities in the area	Hatchery operations in the area.		None	
Subsistence	Low level subsistence use		High local subsistence use			Low level subsistence use		High local subsistence use		Low level subsistence use
Tourism/Recreation	High level recreational use throughout the area-sport fishing, wildlife viewing, excursions, camping, cruise ships, hunting									
Waterfront Public Facilities/Parks	Tongass National Forest-No waterfront facilities	Small boat harbor and supporting services are present in Hydaburg. Tongass National Forest	Municipality owned small boat harbor and supporting services are present in Klawock. Tongass National Forest.		Tongass National Forest, no services available		Municipality owned small boat harbor and supporting services are present in Craig. Tongass National Forest.		Tongass National Forest, no services available.	
Waterfront Private Facilities	None present	Marine services docks and piers in Hydaburg.	Additional marine services docks and piers in Klawock.		None present		Additional marine services docks and piers in Craig.		None present	
Response and Salvage Resource Consideration										
Ability to Boom Vessel	No	Weather Dependent	Yes	Yes	No	Yes	Yes	Weather Dependent	Yes	Weather Dependent
Geographic Response Strategies	None (2010)									
Closest Alternative PPOR for a same sized vessel	7 to D-02-02	7 to D-02-01	.75 to D-02-04	.75 to D-02-03	27 to D-02-06	27 to D-02-05	.75 to L-02-03	.2 to L-02-03	.2 to L-02-02	22 to L-02-02

Site ID Number and Vessel Size Classification	
D = Deep Draft Vessel-lengths to 1,000 ft or greater, 20-40 ft of draft, greater than 10,000 GT	
L = Light Draft Vessel-up to 450 feet in length, draft up to 20 ft	
Stakeholders for PPOR Zone 02 of the Southeast Alaska Subarea	
Organization	Contact
Alaska Department of Fish & Game	Resource Manager
Alaska Department of Natural Resources	Resource Manager, State Historic Preservation Officer
Central Council Tlingit-Haida Tribal	President
City of Craig	Mayor
City of Klawock	Mayor
Klawock Heenya Corporation	President
Native Allotments	Dept of the Interior-Regional Environmental Officer
Sealaska Corporation	President
Shaan-Seet Inc.	President
Tongass National Forest	Forest Supervisor

*For current mariculture operations, ownership information and locations, consult the ADF&G mariculture website: <http://www.cf.adfg.state.ak.us/geninfo/enhance/maricult/maricult.php>

Physical and Operational Characteristics for PPOR Map 02 of the Southeast Alaska Subarea										
	Alder Cove Anchorage	Saltery Point Moorage	Klawock Mill Dock	Klawock Island Dock	Kell Bay	Admiralty Mine Dock	Craig City Dock	Crab Bay Anchorage	Petro-Marine Dock	Warm Chuck Inlet
ID Number	D-02-01	D-02-02	D-02-03	D-02-04	D-02-05	D-02-06	L-02-01	L-02-02	L-02-03	L-02-04
Location-(In the general area of)	55°06.84'N 132°38.58'W	55°11.10'N 132°48.24'W	55°32.40'N 133°06.42'W	55°33.24'N133°06.66'W	56°09.48'N134°06.36'W	56°09.60'N133°28.08'W	55°28.62'N133°09.24'W	55°29.04'N133°09.00'W	55°29.28'N133°08.52'W	55°45.36'N133°29.82'W
Maximum Vessel Size	Deep Draft Vessels- lengths up to 1000 feet, 20-40 feet of draft, greater than 10,000 GT						Light Draft Vessel - up to 450 feet in length, draft up to 20 feet			
Type of Berthing	Anchorage	Moorage	Dock		Anchorage	Dock		Anchorage	Dock	Anchorage
Contact	N/A	Sealaska Timber Corp. 907.225.9444	Viking Lumber Co. 907.755.8880	Office 907.225.9444	N/A	Select Resources Inc.1800.579.9314	Harbor master 907.826.3404	N/A	Plant Manager 907.826.3296	N/A
Navigational Approach	Approach from the SW	SE through Sukkwan Strait	Approach via marked channel from San Alberto Bay		Approach from the E via Affleck Canal	Approach via Shakan Strait	Approach via marked channel from San Alberto Bay			Approach from the SE
Minimum Water Depths (MLLW)	9 fathoms	6 fathoms	42 feet	37 feet	11 fathoms	34 feet	20 feet	9 fathoms	20 feet	18 fathoms
Maximum Vessel Draft	40 ft. +	30 ft.	35 ft.	30 ft.	40 ft. +	30 ft.	15 ft.	20 ft. +	15 ft.	20 ft. +
Swing Room or Dock Face (w/ dolphins)	3000 ft.	800 ft.	500 ft. face 900 ft. total	440 ft.	3000 ft.	250 ft.	72 ft.	1200 ft.	100 ft.	1800 ft.
Bottom Type	Mud, Shells	N/A		N/A	Mud	N/A	N/A	Mud	N/A	Rocky
Nearest Alternative Dock/Piers	73 nm to D-01-02 (Metlakatla)	80 nm to D-01-02 (Metlakatla)	0.75 nm to D-02-04	0.75 nm to D-02-03	28 nm to D-02-06	55 nm to D-02-03	0.75 nm to L-02-02	0.5 nm to L-02-01	0.75 nm to L-02-01	20 nm to L-02-01
Nearest Alternative Anchorage	7.5 nm to D-02-02	7.5 nm to D-02-01	50 nm to D-02-05	50 nm to D-02-05	53 nm to D-03-02	28 nm to D-02-05	0.5 nm to L-02-02	20 nm to L-02-04	0.5 nm to L-02-02	20 nm to L-02-02
Prevailing Winds	Strongest winds are usually out of the N, E, and SE. May through September NW winds dominate. E and SE winds blow more than 50 percent of the time from October through February									
Currents	Light currents in the Inlet. Minimal currents at the anchorages	The average maximum current is about 1.3 knots and sets NW with the flood and SE with the ebb.	Minimal currents at the docks.		Minimal currents at the anchorages	currents unreported at the dock.	Light currents. The flood current sets toward the wharf and the ebb current sets off the wharf.		Light currents in the Strait. Minimal currents at the anchorages	
Tides	Mean High 11.8 ft. (Higher 12.7) Mean Low 1.5 (Lower -4.0)	Mean High 12.0 ft. (Higher 12.9) Mean Low 1.5 (Lower -4.0)	Mean High 9.2 ft. (Higher 10) Mean Low 0.0 (Lower -4.0)		Mean High 10.4 ft. (Higher 11.2) Mean Low 1.4(Lower 0.0)	Mean High 10.9 ft. (Higher 11.7) Mean Low 1.3 (Lower -4.0)	Mean High 9.2ft. (Higher 10) Mean Low 0.0 (Lower -4.0)			Mean High 9.3ft. (Higher 10.2) Mean Low 0.0 (Lower -4.0)
Sea Conditions	Exposed to swells from the N & S	Sheltered		Sheltered	Sheltered	Sheltered	Sheltered			Exposed to swell from the SE
Shelter from Severe Storms	Sheltered from E & W storms	Sheltered		Sheltered	Sheltered	Sheltered	Sheltered			Sheltered from storms from the SW-SE
Fog	Frequent throughout the year. Heaviest from June-July.									
Ice	Ice can form in bays from November until May if colder conditions prevail.									

NOTE: Sensitive resource information can be found on other maps which can be accessed through the sensitive area section of the Southeast Alaska Subarea Contingency Plan: http://dec.alaska.gov/spar/perp/plans/scp_se.htm