



L-03-03, anchorage area near Salmon Bay viewed from the north.



Steamer Bay viewed from the south.



Wrangell Cruiseship Wharf, Ferry Dock and Woronkofski Anchorage viewed from the east.

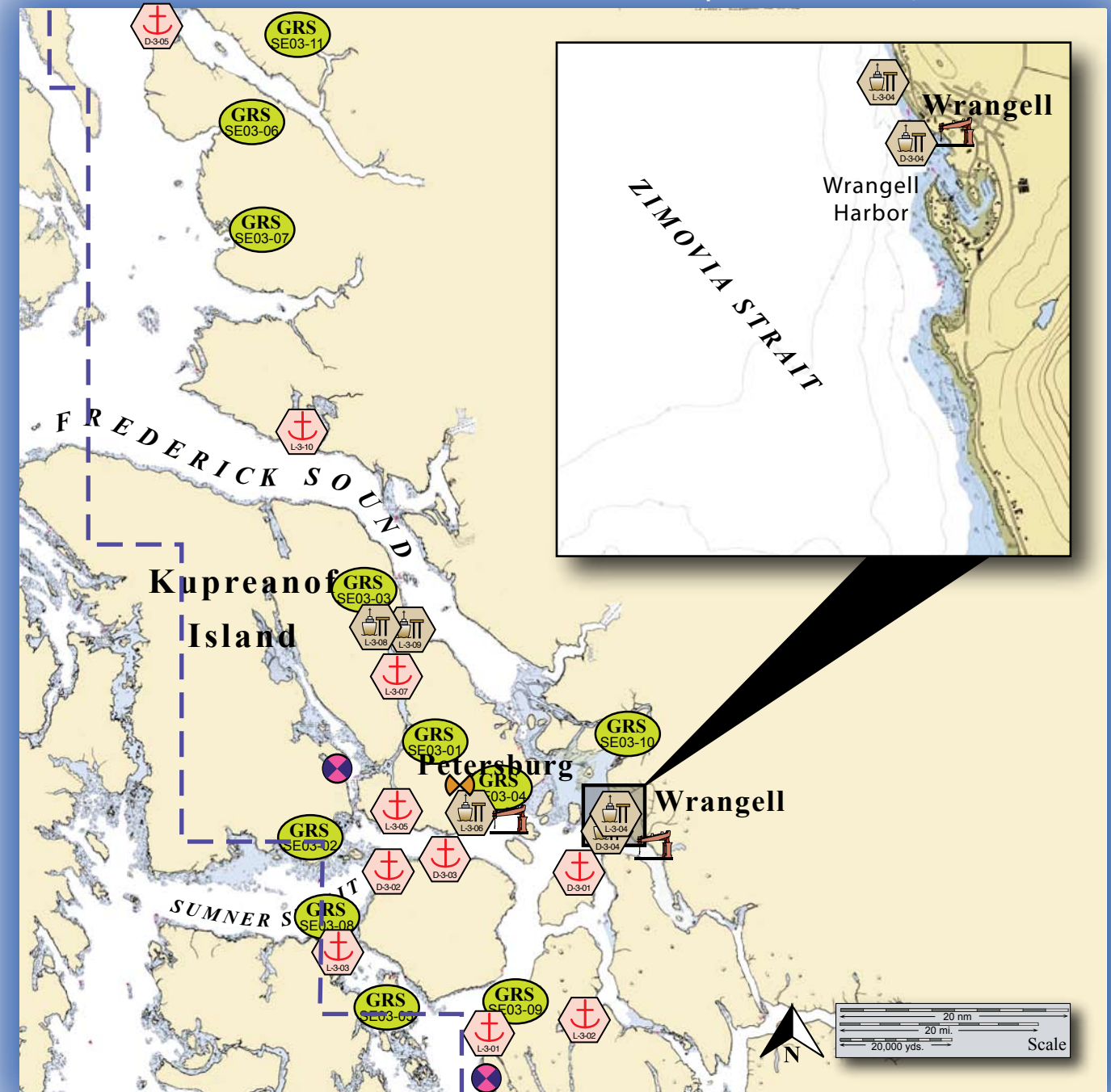


Petersburg Ferry Terminal and Scow Bay Anchorage viewed from the north.



Entrance to Farragut Bay, L-03-10, viewed from the northwest.

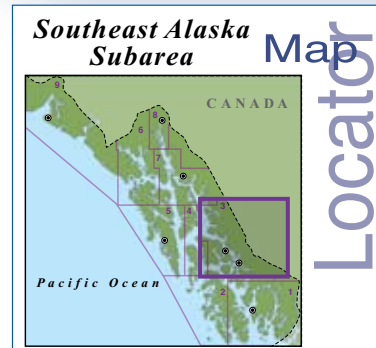
Potential Places of Refuge for Southeast Alaska Subarea



Center of map at 55° 24.38' N Lat., 131° 50.74' W Lon.

This is not intended for navigational use.

Soundings in fathoms



	Anchorage		Existing GRS
	Mooring		Fish Hatchery
	Dock/pier		Aquatic Farms
	Crane		Private Cabins
	Airport		Public Use Cabins
			Boat Harbor

**Southeast PPOR Map 03**  
 USGS 1:217,828K Quadrangle Map Reference - Etolin Isl to Midway Isl Including Sumner Strait 17360\_1

Site Considerations for PPOR Zone 03 of the Southeast Alaska Subarea															
	Woronkofski Island	St. John Harbor	Baht Harbor	Wrangell Cruise Vessel Wharf	Holkum Bay	Steamer Bay	Anita Bay	Near Salmon Bay	Wrangell Ferry Terminal	Point Alexander	South Mitkof Ferry Terminal	Scow Bay Anchorage	Petersburg Ferry Dock	Petersburg Ocean Beauty Dock	Farragut Bay
ID Number	D-3-01	D-3-02	D-3-03	D-3-04	D-3-05	L-3-01	L-3-02	L-3-03	L-3-04	L-3-05	L-3-06	L-3-07	L-3-08	L-3-09	L-03-10
<b>Human Health &amp; Safety</b>															
Community-distance to (nm)	2.5 to Wrangell	20 to Wrangell	14 to Wrangell	0 to Wrangell	40 to Juneau	24 to Wrangell	17 to Wrangell	30 to Wrangell	0 to Wrangell	20 to Wrangell	12 to Wrangell	2.5 to Petersburg	0 to Petersburg	0 to Petersburg	23 to Petersburg
Health Care Facilities	Clinic Services in Wrangell				Full Hospital Services in Juneau	Clinic Services in Wrangell						Clinic Services in Petersburg			
<b>Natural Resources Considerations</b>															
Fish & Wildlife	Spawning salmon & herring, seals, waterfowl														
Threatened & Endangered Species	None (2010)														
Sensitive Areas	MESA-63-Stikine River Flats nearby	Not Designated	MESA-63-Stikine River Flats nearby. Area designated sensitive by SE GRS Workgroup	Not Designated	Area designated sensitive by SE GRS Workgroup	Not Designated	Area designated sensitive by SE GRS Workgroup	MESA-63-Stikine River Flats nearby.	Area designated sensitive by SE GRS Workgroup	MESA-63-Stikine River Flats nearby. Area designated sensitive by SE GRS Workgroup.	Area designated sensitive by SE GRS Workgroup			Not Designated	
<b>Other Stakeholder Considerations</b>															
Fisheries	Salmon, Groundfish, Crab														
Historic Properties	Historic Properties are present throughout the area.														
Mariculture*	None														
Subsistence	High local subsistence use	Low level local subsistence use				High local subsistence use	Low level local subsistence use		High local subsistence use					Low level local subsistence use	
Tourism/Recreation	High level recreational use throughout the area-sport fishing, wildlife viewing, excursions, camping, cruise ships, hunting														
Waterfront Public Facilities/Parks	Municipality owned small boat harbor and supporting services are present in Wrangell. Tongass National Forest.	Tongass National Forest-no services available.	Municipality owned small boat harbor and supporting services are present in Wrangell. Tongass National Forest.	Tongass National Forest-no services available.	Tongass National Forest-no services available.	Tongass National Forest-no services available.	Tongass National Forest-no services available.	Municipality owned small boat harbor and supporting services are present in Wrangell. Tongass National Forest.	Tongass National Forest-no services available.	State Ferry Dock and small pier and road access to Petersburg. Tongass National Forest.	Municipality owned small boat harbor and supporting services are present in Petersburg. Tongass National Forest.			Tongass National Forest-no services available.	
Waterfront Private Facilities	Marine services docks and piers in Wrangell	None	Marine services docks and piers in Wrangell	None	Small private docks in the vicinity.	None	None	Marine services docks and piers in Wrangell	None	None	Marine services docks and piers in Petersburg		None		
<b>Response and Salvage Resource Consideration</b>															
Ability to Boom Vessel	Weather Dependent		No	Yes	Yes	Weather Dependent		Yes	Weather Dependent	Yes	Weather Dependent	Yes		Weather Dependent	
Geographic Response Strategies	SE01-06	None (2009)	SE01-01	None (2009)	SE03-09	SE03-08		SE03-02	SE03-04	SE03-03		None (2010)			
Closest Alternative PPOR for a same sized vessel	2.5 nm to D-03-04	6 nm to D-02-03	6 nm to D-02-02	2.5 nm to D-03-01	25 nm to D-07-02	16 nm to L-03-03	17 nm to L-03-04	6 nm to L-04-02	11 nm to L-03-06	11 nm L-03-06	11 nm L-03-05	.5 nm to L-03-09	.5 nm to L-03-09	.5 nm to L-03-08	27 nm to L-03-09

Stakeholders for PPOR Zone 03 of the Southeast Alaska Subarea	
Organization	Contact
Alaska Department of Fish & Game	Resource Manager
Alaska Department of Natural Resources	Resource Manager, State Historic Preservation Officer
City & Borough of Wrangell	Manager
City of Petersburg	Manager
Central Council Tlingit-Haida Tribal	President
Native Allotments	Dept of the Interior-Regional Environmental Officer
Petersburg Indian Association	President
Sealaska Corporation	President
Tongass National Forest	Forest Supervisor
Wrangell Cooperative Association	President

\*For current mariculture operations, ownership information and locations, consult the ADF&G mariculture website: <http://www.cf.adfg.state.ak.us/geninfo/enhance/maricult/maricult.php>

Physical and Operational Characteristics for PPOR Map 03 of the Southeast Alaska Subarea															
	Woronkofski Island	St. John Harbor	Baht Harbor	Wrangell Cruise Vessel Wharf	Holkum Bay	Steamer Bay	Anita Bay	Near Salmon Bay	Wrangell Ferry Terminal	Point Alexander	South Mitkof Ferry Terminal	Scow Bay Anchorage	Petersburg Ferry Dock	Petersburg Ocean Beauty Dock	Farragut Bay
ID Number	D-03-01	D-03-02	D-03-03	D-03-04	D-03-05	L-03-01	L-03-02	L-03-03	L-03-04	L-03-05	L-03-06	L-03-07	L-03-08	L-03-09	L-03-10
Location-(In the general area of)	56°26.16'N 132°25.91'W	56°26.76'N 133°00.06'W	56°27.21'N 132°48.56'W	56°28.20'N 132°23.28'W	57°45.28'N 133°39.38'W	56°10.52'N 132°42.49'W	56°12.00'N 132°25.14'W	56°17.54'N 133°06.74'W	56°28.44'N 132°23.46'W	56°31.04'N 132°57.85'W	56°31.92'N 132°42.71'W	56°46.00'N 132°58.47'W	56°48.54'N 132°58.56'W	56°48.90'N 132°57.54'W	57°07.29'N 133°14.58'W
Maximum Vessel Size	Deep Draft Vessels- lengths up to 1000 feet, 20-40 feet of draft, greater than 10,000 GT								Light Draft Vessel - up to 450 feet in length, draft up to 20 feet						
Type of Berthing	Anchorage			Dock	Anchorage				Dock	Anchorage	Dock	Anchorage	Dock		Anchorage
Contact	N/A			Harbormaster 907.874.3736	N/A				Harbormaster 907.874.3736	N/A	Terminal Operations Manager	N/A	Terminal Operations Manager	Plant Manager 206.285.6800 (Oct-March) 907.772.4242 (April-Sept)	N/A
Navigational Approach	N from Stikine Strait or SE from Chichagof Strait	Approach from the E or W in Sumner Strait		Approach from the W	Approach from the SW-NW	Approach from the N	Approach from E via Zimovia Strait	Approach from the W	Approach from the W	Approach from the S	Approach from the SE	Approach from the N or S	Approach from the NW or NE		Approach from the S
Minimum Water Depths (MLLW)	19 fathoms	4.5 fathoms	24 fathoms	35 ft.	26 fathoms	17 fathoms	25 fathoms	24 fathoms	24 ft.	11 fathoms	20 ft.	12 fathoms	28 ft.	20 ft.	25 fathoms
Maximum Vessel Draft	40 ft. +	20 ft.	40 ft. +	30 ft.	40 ft.	30 ft. +	20 ft. +	20 ft. +	20 ft.	20 ft. +	15 ft.	20 ft. +	20 ft. +	15 ft.	20 ft. +
Swing Room or Dock Face (w/ dolphins)	4000 ft.	2000 ft.	3000 ft.	720 ft.	3000 ft.	1800 ft.	2400 ft.	1200 ft.	626 ft.	1600 ft.	80 ft.	900 ft.	600 ft.	300 ft.	2500 ft.
Bottom Type	Mud	Sand, Mud, Gravel	Clay	N/A	Clay, Sand	Shells	Mud	Mud	N/A	Mud, Sand	N/A	Mud, Shells	N/A		Gravel, Rocky, Mud
Nearest Alternative Dock/Piers	2.5nm to D-03-04	21nm to D-03-04	19 nm to D-03-04	88 nm to Ketchikan Docks	41 nm to Juneau Docks	25 nm to Wrangell Docks	20 nm to Wrangell Docks	20 nm to L-03-06	0.3 nm to D-03-04	11 nm to L-03-06	12 nm to Wrangell Docks	2.5nm to Petersburg Docks	0.5nm to L-03-09	0.5nm to L-03-08	24 nm to L-03-09
Nearest Alternative Anchorage	12 nm to D-03-03	6 nm to D-03-04	6 nm to D-03-02	2.5nm to D-03-01	24 nm to D-07-02	16 nm to L-03-03	17 nm to D-03-01	6 nm to L-04-02	2.5nm to D-03-01	13 nm to L-04-02	11 nm L-03-05	16 nm L-03-05	2.5 nm to L-03-07	2.5 nm to L-03-07	26.5 nm to L-03-07
Prevailing Winds	Strongest winds are usually out of the N, E, and SE. May through September NW winds dominate. E and SE winds blow more than 50 percent of the time from October through February														
Currents	Tidal currents in the area are variable.	Currents up to 1.2 to 2 knots in the wide parts of the Strait. Significantly more current in constricted areas.		Tidal currents in the area are variable.	Minimal currents at the anchorage.	Currents up to 1.2 to 2 knots in the wide parts of the Strait. Minimal currents at the anchorage.	Minimal currents at the anchorage.	Currents in the bay are minimal. Nearby currents can approach 3 knots.	Tidal currents in the area are variable.	Currents up to 1 to 2 knots in the wide parts of the Strait. Significantly more current in constricted areas.	Currents in the bay are minimal. Nearby currents can approach 3 knots.	Current varies throughout the Narrows. Off Petersburg, the velocity of the current is 3.5 knots.			Currents in the bay are minimal.
Tides	Mean High 14.8 ft. (Higher 15.7) Mean Low 1.5 (Lower -5.5)	Mean High 13.8 ft. (Higher 14.6) Mean Low 0.0(Lower -1.5)	Mean High 14.8 ft. (Higher 15.7) Mean Low 1.5 (Lower -5.5)	Mean High 14.5 ft. (Higher 15.4 Mean Low 1.5 (Lower 0.0)	Mean High 15.4 ft. (Higher 16.3 Mean Low 1.4 (Lower -4.5)	Mean High 14.8 ft. (Higher 15.7) Mean Low 1.5 (Lower -5.5)	Mean High 13.7 ft. (Higher 14.6) Mean Low 1.6(Lower -4.5)	Mean High 14.8 ft. (Higher 15.7) Mean Low 1.5 (Lower -5.5)	Mean High 14.8 ft. (Higher 15.7) Mean Low 1.5 (Lower -5.5)	Mean High 14.8 ft. (Higher 15.7) Mean Low 1.5 (Lower -5.5)	Mean High 14.8 ft. (Higher 15.7) Mean Low 1.5 (Lower -5.5)	Mean High 14.8 ft. (Higher 15.7) Mean Low 1.4 (Lower -4.5)			Mean High 14.8ft. (Higher 15.4) Mean Low 1.5(Lower -5.0)
Sea Conditions	Exposed to swells from the NE-NW	Exposed to swells from the E & W		Exposed to swells from the W	Exposed to swells from the W	Exposed to swells from the NE	Sheltered	Exposed to swells from the N	Exposed to swells from the W	Exposed to swells from the SW	Sheltered	Sheltered	Sheltered	Sheltered	Exposed to swells from the S
Shelter from Severe Storms	Sheltered from E-W storms	Sheltered from N & S storms		Sheltered from N-S	Sheltered from W-E	Sheltered from N-E	Sheltered	Sheltered from N	Sheltered from N-S	Sheltered from W-S	Sheltered	Sheltered	Sheltered	Sheltered	Sheltered from W-E
Fog	Frequent throughout the year. Heaviest from June-July.														
Ice	Ice from nearby glaciers and outflow from rivers with ice in spring may present navigational hazards. Ice may form in bays from November until May if colder conditions prevail.														

NOTE: Sensitive resource information can be found on other maps which can be accessed through the sensitive area section of the Southeast Alaska Subarea Contingency Plan: [http://dec.alaska.gov/spar/perp/plans/scp\\_se.htm](http://dec.alaska.gov/spar/perp/plans/scp_se.htm)