



Excursion Inlet, L-06-05 & D-06-07, viewed from the north.



Excursion Inlet Dock viewed from the northwest.



Bartlett Cove Viewed from the south.

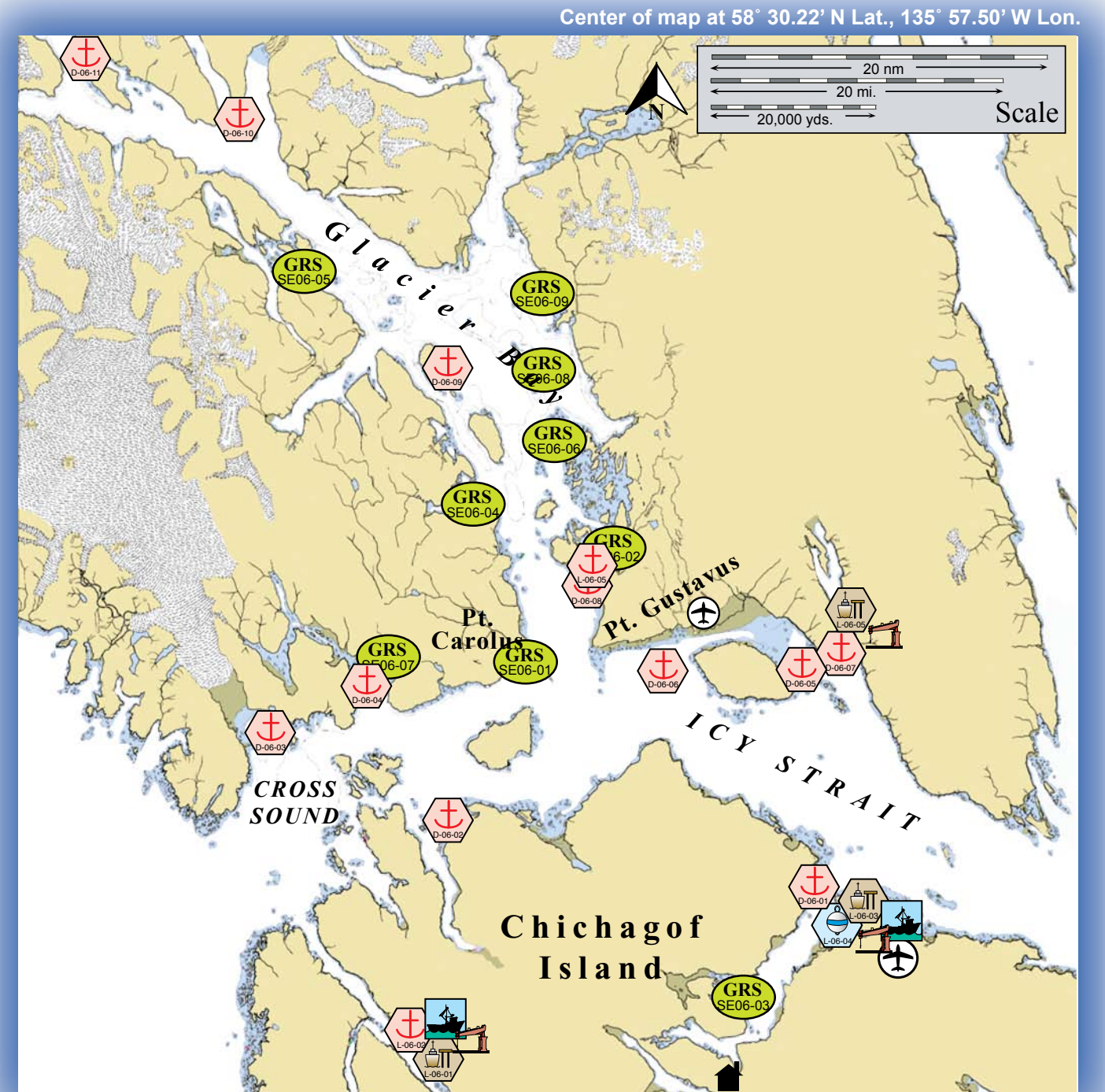


Viewed from the southwest, D-06-06 and uncompleted pier to service Gustavus (2010).

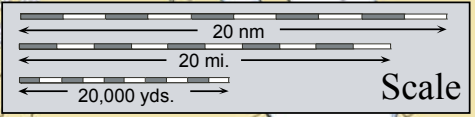


Dundas Bay viewed from the south.

Potential Places of Refuge for Southeast Alaska Subarea

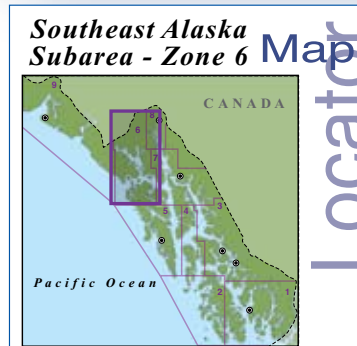


Center of map at 58° 30.22' N Lat., 135° 57.50' W Lon.



This is not intended for navigational use.

Soundings in fathoms



	Anchorage		Existing GRS
	Mooring		Fish Hatchery
	Dock/pier		Private Cabins
	Crane		Public Use Cabins
	Airport		Boat Harbor

Southeast PPOR Map 06

USGS 1:209,978K Quadrangle Map Reference - Stephens Passage to Cross Sound Including Lynn Canal 17300\_1

Site Considerations for PPOR Zone 06 of the Southeast Alaska Subarea																	
	Port Frederick Anchorage-Halibut Rock	Idaho Inlet	Taylor Bay	Dundas Bay	East Pleasant Island	West Pleasant Island	Excursion Inlet	Outer Bartlett Cove	Drake Island Anchorage	Composite Island	Russell Island	Pelican Ferry Terminal	Lisianski Inlet	Hoonah Ferry Terminal	Hoonah Moorage	Excursion Inlet Cannery Dock	Inner Bartlett Cove
ID Number	D-06-01	D-06-02	D-06-03	D-06-04	D-06-05	D-06-06	D-06-07	D-06-08	D-06-09	D-06-10	D-06-11	L-06-01	L-06-02	L-06-03	L-06-04	L-06-05	L-06-06
<b>Human Health &amp; Safety</b>																	
Community-distance to (nm)	2.25 to Hoonah	19 to Gustavus	28 to Gustavus	21 to Gustavus	7 to Gustavus	2.5 to Gustavus	3.5 to Gustavus	1.5 to Gustavus	20 to Gustavus	38 to Gustavus	44 to Gustavus	0 to Pelican	1.5 to Pelican	.25 to Hoonah	2.25 to Hoonah	12 to Gustavus	.5 to Gustavus
Health Care Facilities	Community Clinic at Hoonah with limited emergency services	Community Clinic at Gustavus with limited emergency services										Community Clinic at Pelican with limited emergency services	Community Clinic at Hoonah with limited emergency services	Community Clinic at Gustavus with limited emergency services			
<b>Natural Resources Considerations</b>																	
Fish & Wildlife	Spawning salmon, seals, otters, seabird concentrations	Spawning salmon, seals, otters, seabird concentrations			Spawning salmon, seals, otters			Spawning salmon, seals, otters, seabird & waterfowl concentrations			Spawning salmon and herring, seals, otters, waterfowl concentrations		Spawning salmon, seals, otters, seabird concentrations		Spawning salmon, seals, otters	Spawning salmon, seals, otters, seabird & waterfowl concentrations	
Threatened & Endangered Species	No listed species present in the immediate area. Stellers sea lion (threatened) feed throughout the area.																
Sensitive Areas	Not Designated			Area designated as sensitive by SE GRS Workgroup	Not Designated	Area designated as sensitive by SE GRS Workgroup	Not Designated	Area designated as sensitive by SE GRS Workgroup				Not Designated		Area designated as sensitive by SE GRS Workgroup	Not Designated	Area designated high priority by SE GRS Workgroup.	
<b>Other Stakeholder Considerations</b>																	
Fisheries	Salmon, Groundfish, Crab																
Historic Properties	Historic properties are present throughout the area.																
Mariculture*	None	Nearby in Port Althrop				None											
Subsistence	High level of subsistence use-salmon, intertidal	Lowlevel local subsistence use								High level of subsistence use-salmon, intertidal				Low level of subsistence use			
Tourism/Recreation	High Recreational Use-Sport fishing, wildlife viewing, camping, excursion vessels and cruise ships																
Waterfront Public Facilities/Parks	Municipality owned small boat harbor and supporting services are present. Tongass National Forest	Glacier Bay National Park-No public waterfront facilities			Tongass National Forest and Glacier Bay National Park-No waterfront facilities			Glacier Bay National Park-Public Small Boat Dock in Bartlett Cove			Municipality owned small boat harbor and supporting services are present. Tongass National Forest		Tongass National Forest-Small Boat facilities available in Hoonah		Tongass National Forest-No public waterfront facilities	Glacier Bay National Park Public Small Boat Dock in Bartlett Cove	
Waterfront Private Facilities	Private docks and cargo services nearby	None present				Active Cannery Facility	Glacier Bay Lodge and Visitors Center			Private docks and cargo services nearby				Active cannery facility	Glacier Bay Lodge and Visitors Center		
<b>Response and Salvage Resource Consideration</b>																	
Ability to Boom Vessel	Weather Dependent											Yes	Weather Dependent	Yes	Weather Dependent	Yes	Weather Dependent
Geographic Response Strategies	SE06-03	None (2009)			SE06-06,07	None (2009)	SE06-01	None (2009)	SE06-02	SE06-04,06,08	SE06-08,09	SE06-05	None (2009)		SE06-03	None (2009)	SE06-02
Closest Alternative Place of Refuge for same sized vessel	14 to D-06-05	9.5 to D-06-03	9.5 to D-06-02	9.5 to D-06-02	2.5 to D-06-06	2.5 to D-06-05	2.5 to D-06-05	10 to D-06-07	17 to D-06-08	11 to D-06-11	11 to D-06-10	1.5 to L-06-02	1.5 to L-06-01	2 to L-06-04	2 to L-06-03	18 to L-05-03	26 to L-06-03

Site ID Number and Vessel Size Classification
D = Deep Draft Vessel-lengths to 1,000 ft or greater, 20-40 ft of draft, greater than 10,000 GT
L = Light Draft Vessel-up to 450 feet in length, draft up to 20 ft

Stakeholders for PPOR Zone 06 of the Southeast Alaska Subarea											
Organization		Contact		Organization		Contact		Organization		Contact	
Alaska Department of Fish & Game	Resource Manager	City of Gustavus	Mayor	Glacier Bay National Park	Dept of the Interior-Regional Environmental Officer	Native Allotments	Dept of the Interior-Regional Environmental Officer				
Alaska Department of Natural Resources	Resource Manager, State Historic Preservation Officer	City of Hoonah	President	Hoonah Indian Association (IRA)	Mayor	Sealaska Corporation	President				
Central Council Tlingit-Haida Tribal	President	City of Pelican	Mayor	Huna Totem Corporation	President	Tongass National Forest	Forest Supervisor				

\*For current mariculture operations, ownership information and locations, consult the ADF&G mariculture website: <http://www.cf.adfg.state.ak.us/geninfo/enhance/maricult/maricult.php>

Physical and Operational Characteristics for PPOR Map 06 of the Southeast Alaska Subarea																			
	Port Frederick Anchorage-Halibut Rock	Idaho Inlet	Taylor Bay	Dundas Bay	East Pleasant Island	West Pleasant Island	Excursion Inlet	Outer Bartlett Cove	Drake Island Anchorage	Composite Island	Russell Island	Pelican Ferry Terminal	Lisianski Inlet	Hoonah Ferry Terminal	Hoonah Moorage	Excursion Inlet Cannery Dock	Inner Bartlett Cove		
ID Number	D-06-01	D-06-02	D-06-03	D-06-04	D-06-05	D-06-06	D-06-07	D-06-08	D-06-09	D-06-10	D-06-11	L-06-01	L-06-02	L-06-03	L-06-04	L-06-05	L-06-06		
Location (in the general area)	58°07.88'N 135°30.39'W	58°12.51'N 136°11.48'W	58°17.45'N 136°32.70'W	58°20.36'N 136°20.31'W	58°21.50'N 135°31.59'W	58°21.56'N 135°47.09'W	58°22.45'N 135°27.24'W	58°26.42'N 135°55.70'W	58°39.27'N 136°11.52'W	58°53.79'N 136°35.14'W	58°57.28'N 136°52.66'W	57°57.46'N 136°13.65'W	57°58.72'N 136°15.01'W	58°06.99'N 135°27.38'W	58°06.16'N 135°28.14'W	58°24.97'N 135°26.82'W	58°27.13'N 135°54.97'W		
Maximum Vessel Size	Deep Draft Vessels- lengths to 1000 feet or greater, 20-40 feet of draft, greater than 10,000 GT											Light Draft Vessel - up to 450 feet in length, draft up to 20 feet							
Type of Berthing	Anchorage											Dock	Anchorage	Mooring	Dock	Anchorage			
Contact	N/A											907.735.2212 Harbor Master	N/A	907.945.3292 Ferry Office	907.945.3670 Harbor Master	907.586.4244- Operations Mgr.	N/A		
Navigational Approach	N from South Passage	N from South Passage	Approach from the S	Approach from the S	Approach from the SE	Approach from the S-W	Approach from the S	Approach from the W	Approach from the N-SE	Approach from the S	Approach from the SW	Approach from the NW	Approach from the NW	Approach from the W	Approach from the NW	Approach from the S	Approach from the W		
Minimum Water Depths (MLLW)	13 fathoms	20 fathoms	32 Fathoms	12 Fathoms	23 Fathoms	31 Fathoms	14 Fathoms	21 fathoms	14 fathoms	24 fathoms	30 fathoms	20 ft.	20 fathoms	25 ft.	28 fathoms	25 ft.	28 fathoms		
Maximum Vessel Draft	40 ft. +		40 ft.	40 ft. +		40 ft.	40 ft. +	40 ft.	40 ft. +	40 ft.	40 ft.	20 ft. (tidal dependent)	20 ft.						
Swing Room or Dock Face (w/ dolphins)	3600 ft.	3600 ft.	3000 ft.	3000 ft.	4200 ft.	6000 ft.	3000 ft.	3600 ft.	3600 ft.	2400 ft.	2000 ft.	185 ft.	1200 ft.	400 ft.	1200 ft.	130 ft.	2800 ft.		
Bottom Type	Rocky	Mud	Shells	Mud, Rocky	Mud			Rocky	Mud, Sand	Mud	N/A	Gravel	N/A	N/A	N/A	N/A	Mud		
Nearest Alternative Dock/Piers	65 nm to Juneau Docks	95 nm to dock in Sitka	97 nm to dock in Sitka	104 nm to dock in Sitka	75 nm to Juneau Docks	85 nm to Juneau Docks	88 nm to Juneau Docks	107 nm to Juneau Docks	120 nm to Juneau Docks	140 nm to Juneau Docks	150 nm to Juneau Docks	45 nm to L-06-03	1.5 nm to L-06-01	45 nm to L-06-01	1 nm to L-05-03	25 to L-05-03	27 nm to L-05-03		
Nearest Alternative Anchorage	14 to D-06-05	9 nm to D-06-04	7 nm to D-06-04	9 nm to D-06-03	3 nm to D-06-07	13 nm to D-06-05	3 nm to D-06-05	10 nm to D-06-06	16 nm to D-06-08	11 nm to D-06-09	10 nm to D-06-10	1.5 to L-06-02	37 nm to L-06-06	1.5nm to L-06-04	16 to L-07-01	19 nm to D-06-04	25 to L-06-04		
Prevailing Winds	Strongest winds are usually out of the N, E, and SE. May through September NW winds dominate. E and SE winds blow more than 50 percent of the time from October through February																		
Currents	Cross Sound has currents up to 1.2 to 2 knots in the wide parts. Significantly more current in constricted areas.		Cross Sound has currents up to 1.2 to 2 knots in the wide parts. Significantly more current in constricted areas.			Light currents in the Strait. Minimal currents at the anchorages			Currents in the channel are significant.		Current has little velocity			Little current at dock face	Light current	Little current at dock face	Light current	Light current at dock face.	Currents in the channel are significant.
Tides	Mean High 9.6 ft. (Higher 10.4) Mean Low 1.5 (Lower -0.0)	Mean High 9.6 ft. (Higher 10.4) Mean Low 1.5 (Lower -0.0)			Mean High 13.5 ft. (Higher 14.5) Mean Low 1.5 (Lower 0.0)			Mean High 13.7 ft. (Higher 14.6) Mean Low 1.6(Lower -4.5)	Mean High 15.1ft. (Higher 16) Mean Low 1.7 (Lower -4.5)	Mean High 15.6ft. (Higher 16.5) Mean Low 1.7 (Lower -4.5)	Mean High 9.5 ft. (Higher 10.4) Mean Low 1.4 (Lower -4.0)	Mean High 9.5 ft. (Higher 10.4) Mean Low 1.4 (Lower -4.0)	Mean High 13.4 ft. (Higher 14.8) Mean Low 1.5 (Lower 0.0)	Mean High 13.4 ft. (Higher 14.8) Mean Low 1.5 (Lower 0.0)	Mean High 13.5 ft. (Higher 14.5) Mean Low 1.5 (Lower 0.0)	Mean High 13.7 ft. (Higher 14.6) Mean Low 1.6(Lower -4.5)			
Sea Conditions	Exposed to swells from the N	Exposed to swells from the N	Exposed to swells from the S	Exposed to swells from the S	Exposed to swells from the S-W	Exposed to swells from the SE	Exposed to swells from the S	Exposed to swells from the SW	Exposed to swells from the N	Sheltered							Exposed to swells from S	Exposed to swells from W	
Shelter from Severe Storms	Sheltered from E-W storms	Sheltered from E-W storms	Sheltered from W-E storms		Sheltered from W-E	Sheltered from N-S storms	Sheltered from W-E storms	Sheltered from N-S	Sheltered from E-W	Strong winds may funnel out of the inlets			Sheltered			Sheltered from N,E,W	Sheltered from N-S		
Fog	Frequent throughout the year. Heaviest from June-July.																		
Ice	Ice can form in bays from November until May if colder conditions prevail.																		

NOTE: Sensitive resource information can be found on other maps which can be accessed through the sensitive area section of the Southeast Alaska Subarea Contingency Plan: [http://dec.alaska.gov/spar/perp/plans/scp\\_se.htm](http://dec.alaska.gov/spar/perp/plans/scp_se.htm)