





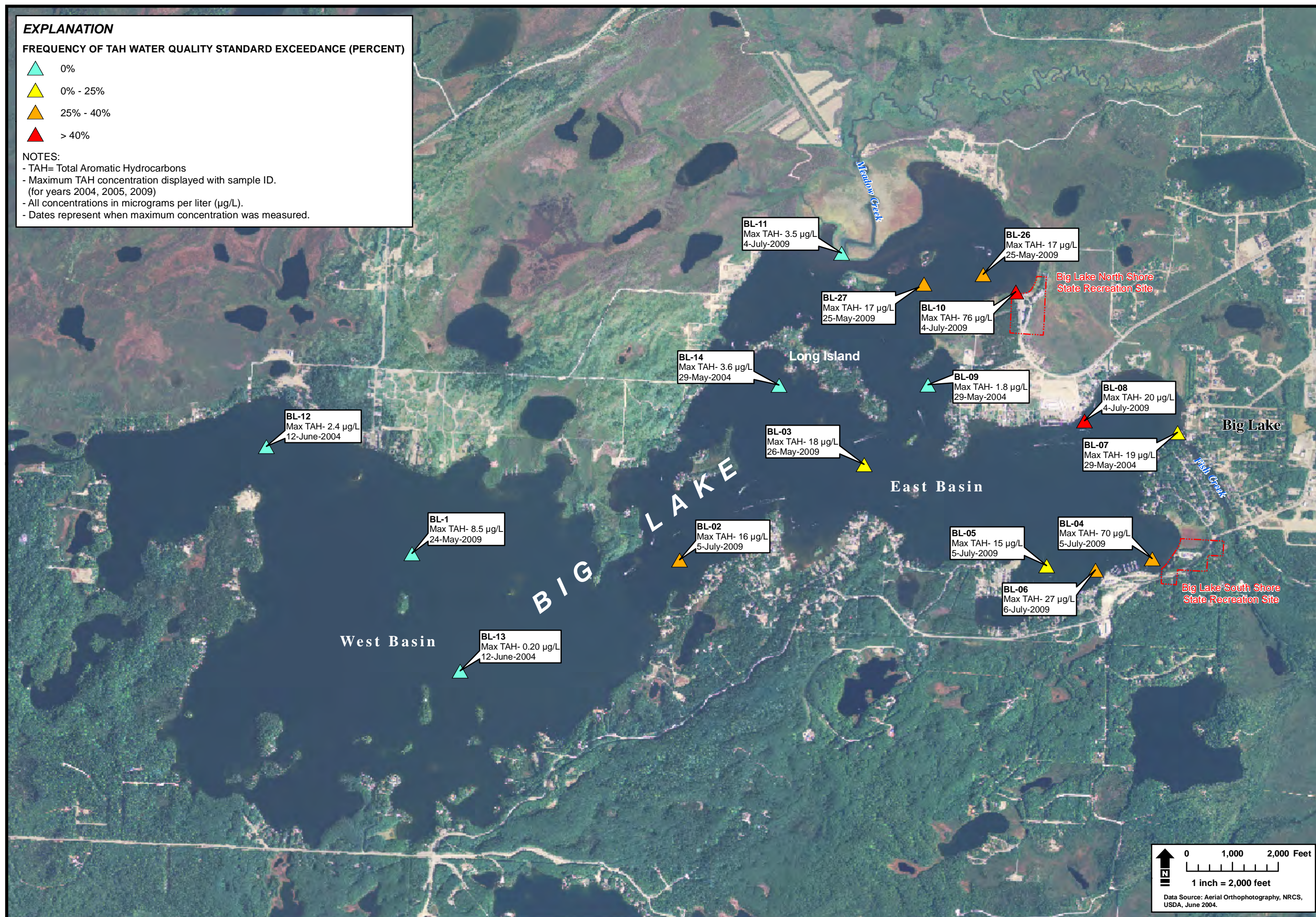
**EXPLANATION**

**FREQUENCY OF TAH WATER QUALITY STANDARD EXCEEDANCE (PERCENT)**

-  0%
-  0% - 25%
-  25% - 40%
-  > 40%

**NOTES:**

- TAH= Total Aromatic Hydrocarbons
- Maximum TAH concentration displayed with sample ID. (for years 2004, 2005, 2009)
- All concentrations in micrograms per liter (µg/L).
- Dates represent when maximum concentration was measured.



**SAMPLE SITE EXCEEDANCES OF WATER QUALITY STANDARD**  
ALASKA DEPARTMENT OF ENVIRONMENTAL CONSERVATION  
BIG LAKE WATER QUALITY MONITORING  
BIG LAKE, ALASKA

DATE: 033110  
CHKD: BM  
DRWN: CS  
PROJ: 14-154  
825 W. 8th Ave., Anchorage,  
AK 99501, (907) 258-4880

