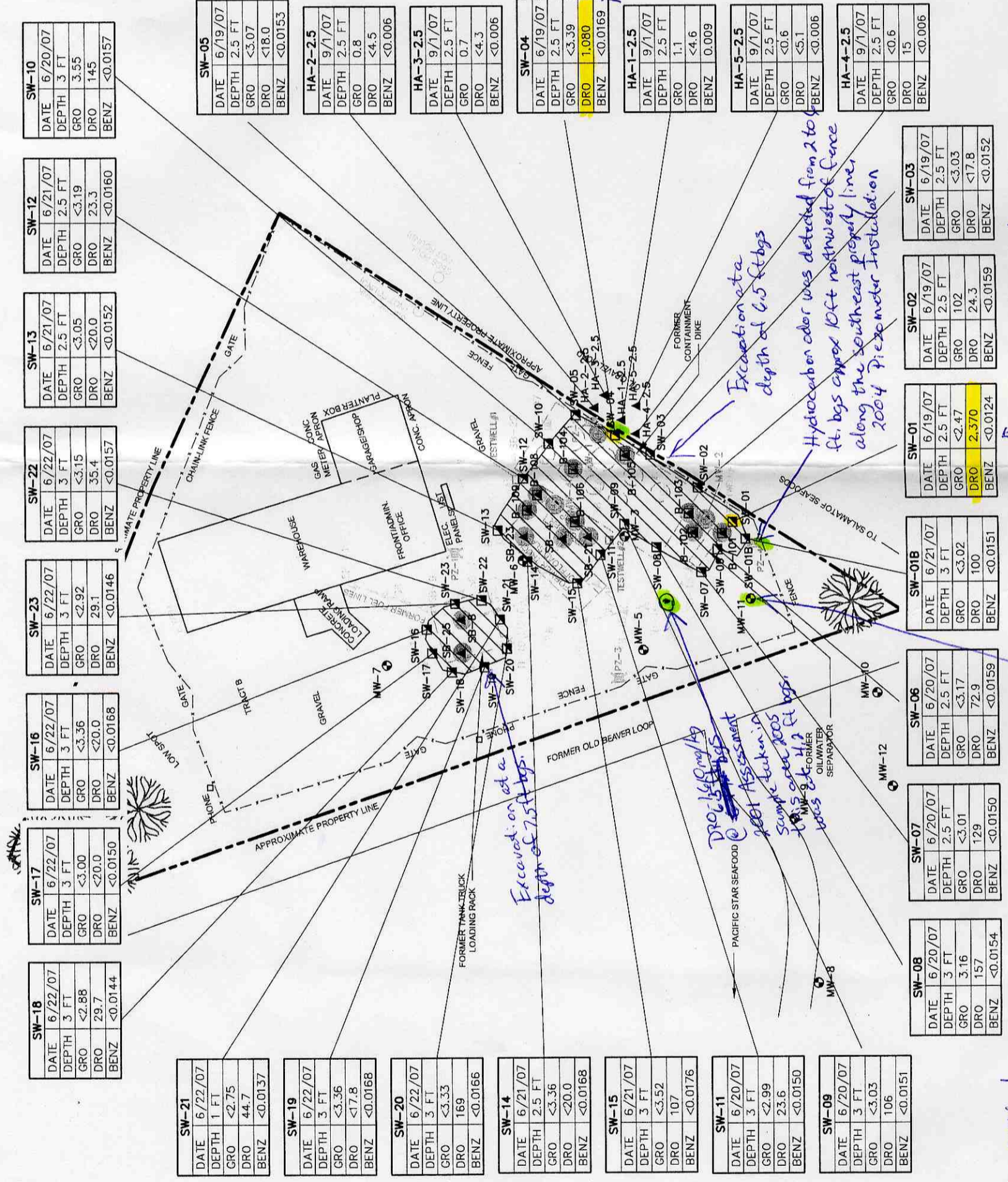
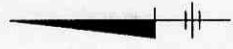


2007 Excavation Limits and Sampling Results

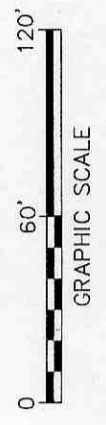


- LEGEND
- MONITORING WELL
 - ABANDONED MONITORING WELL
 - DESTROYED PIEZOMETER
 - TEST WELL
 - SOIL BORING
 - 2006 SOIL BORING
 - 2007 SOIL SAMPLE
 - SOIL DRO AND/OR GRO CONCENTRATION ABOVE APPLICABLE STANDARDS PRIOR TO JUNE 2007 EXCAVATION ACTIVITIES
 - EXCAVATION AREA

SAMPLE LOCATION	
DATE	SAMPLE DATE
DEPTH	SAMPLE DEPTH
GRO	GASOLINE RANGE ORGANICS
DRO	DIESEL RANGE ORGANICS
RRO	RESIDUAL RANGE ORGANICS
BENZ	BENZENE

RESULTS ARE REPORTED IN MILLIGRAMS PER KILOGRAM (mg/kg)

HIGHLIGHTED CONCENTRATIONS ARE GREATER THAN THE ADEC SOIL CLEANUP LEVEL FOR MIGRATION TO GROUNDWATER, UNDER 40-INCH ZONE.



FORMER CHEVRON BULK PLANT 305154
608 BRIDGE ACCESS ROAD, KENAI, ALASKA

GROUNDEWATER MONITORING REPORT

SAMPLING LOCATION AND HYDROCARBON CONCENTRATIONS IN SOIL (JUNE & SEPTEMBER, 2007)

ARCADIS BBL
Infrastructure, environment, facilities

FIGURE 5

Area around this sample could not be over excavated

Excavation to a depth of 6.5 ft bgs

Hydrocarbon odor was detected from 2 to 4 ft. bgs approx 10ft northwest of fence along the southeast property line, 2004 Piezometer installation

Excavated on site a depth of 7.5 ft bgs

DRO 1.080 mg/kg

2007 Assessment

Sample taken in 2005

1.1 mg/g at 1.2 ft bgs

2005

Areas were residual contamination remains

MW-11 Benzene @ 0.02 mg/kg @ 3.5 ft bgs

Area around this soil sample was over excavated. Additional soil sample was taken to confirm that contamination was no longer present.