

WELL SYSTEM DATA SHEET

Owner of Well City of Cold Bay Well #1

Drilling Company S&S Drilling

Pump setter S&S Drilling

Engineer Hurt Egelhofer

Pump Grundfos 40S20-7

Size 2 HP

Serial No. _____

Volts 200

Cycle 60

Phase Serial No. of Motor 3PH 2343059204

Date Pump Warrantee Begins _____

Drop Pipe(s) 8 168 ft Diameter 2"

Material galv. Steel Length 21'

Pitless Adaptor Brand and Type Martinson ST-70

Electrical Work and Controls 10/3 PVC Twisted Sub.
Cable W.G.

Comments INSTALLED PUMP & DROP PIPE OCT 13 1994.

CHECK VALVE INSTALLED 105 FT BELOW
PITLESS ADAPTER.

PITLESS ADAPTER INSTALLED 8 FT BELOW T.O.C.

WELL SYSTEM DATA SHEET

Owner of Well City of Cold Bay Well # 2

Drilling Company S&S Drilling

Pump setter S&S Drilling

Engineer Hurt Egghofer

Pump Grundfos 40S20-7

Size 2 HP Serial No. _____

Volts 200 Cycle 60

Phase Serial No. of Motor 3 PH 2343059215

Date Pump Warrantee Begins _____

Drop Pipe(s) 9 189 ft Diameter 2"

Material Galv Steel Length 21'

Pitless Adaptor Brand and Type Mattiasen St-70

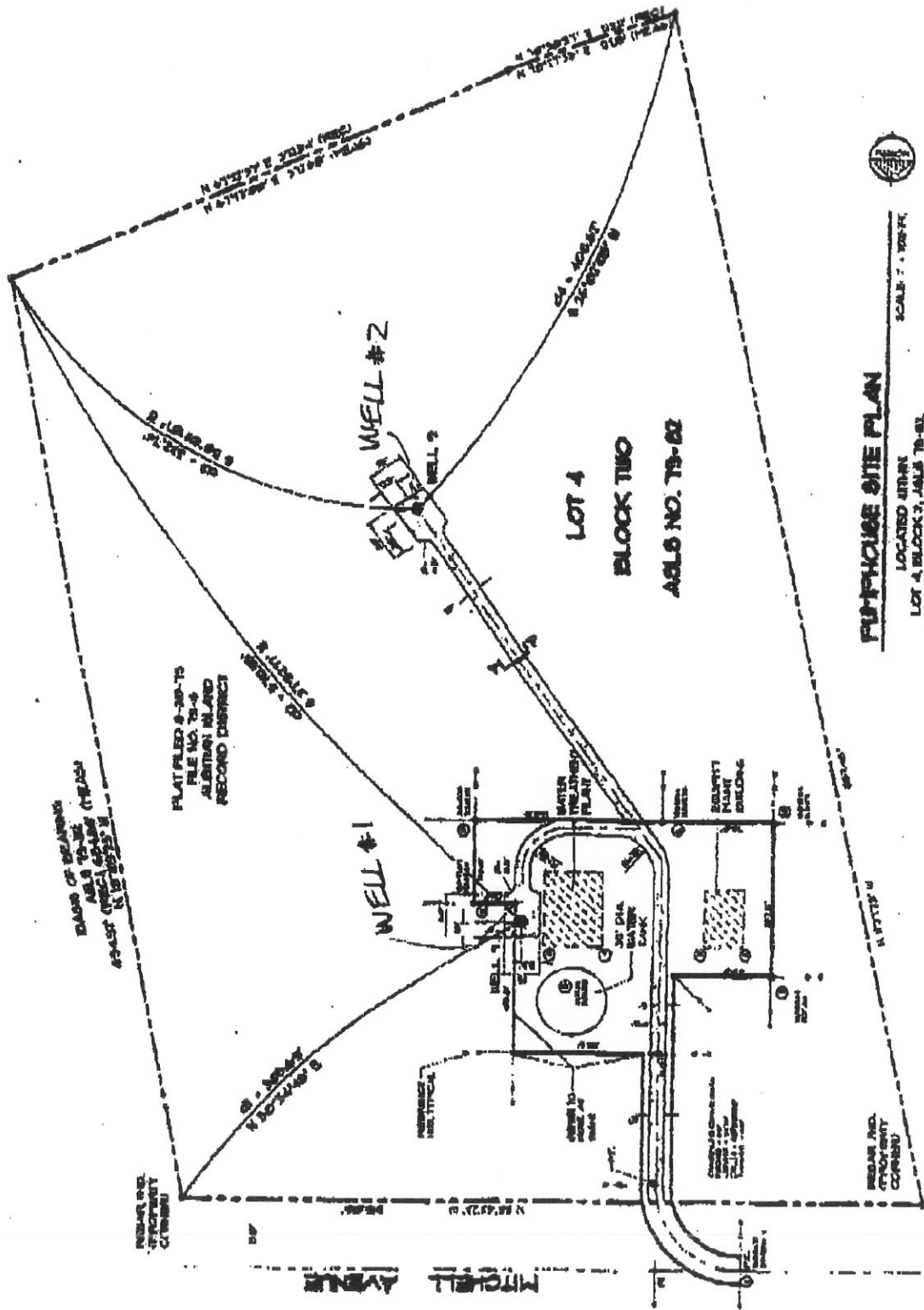
Electrical Work and Controls 10/3 PVC Twstd. Sub. Cable W/G

Comments INSTALLED PUMP & DROP PIPE OCT 14, 1994.

CHECK VALVE INSTALLED 105 FT BELOW

PITLESS ADAPTER.

PITLESS ADAPTER INSTALLED 84 BELOW T.D.C.



PUPHOUSE SITE PLAN
 LOCATED WITHIN
 LOT 4, BLOCK 2, ADLS 79-02
 BEING PROTRACTED SEC. 34,
 T 71 S, R 02 W, SEWARD TERRITORY

SCALE: 7" = 100'

PLAT FILED 8-20-75
 FILE NO. 79-0
 ALASKA ISLAND
 SECOND DISTRICT

BASED ON MEASUREMENTS
 ADLS 79-02
 ADLS 79-02 (17-18)
 ADLS 79-02 (17-18)

REGULAR AND
 PROPERTY
 CORNER

10:42 AM 010 P.02

NOV 21 95

10:51 AM 010 P.03

10:51 AM 010 P.04

DAILY DRILLING LOG
S & S DRILLING

HC01 6761

Palmer, Alaska 99645

(907) 746-0606

OWNER OF LAND City of Cold Bay

ADDRESS Cold Bay, Alaska

WELL SITE # 2

DATE - STARTED 10.10.94

DATE - ENDED 10.12.94

KIND OF FORMATION:

DEPTH OF WELL 220'

STATIC LEVEL OF WATER FT. 55'

DRAW DOWN FT. 58' AT 36 GPM PER MIN

GALS. PER HOUR 50+ GPM PER MIN

KIND OF CASING 1/2" STEEL CASING TO 210'
10' of 1 1/2" SUT & SCREWS TO 220'

FROM 0	FT. TO 3	FT. GRAVEL FILL	FROM	FT. TO	FT.
FROM 3	FT. TO 50	FT. SANDY GRAVEL	FROM	FT. TO	FT.
FROM 50	FT. TO 55	FT. CLAY	FROM	FT. TO	FT.
FROM 55	FT. TO 190	FT. RUNNING SAND, GRAVEL	FROM	FT. TO	FT.
FROM	FT. TO	FT. ACB. WATER	FROM	FT. TO	FT.
FROM 190	FT. TO 220	FT. GRAVEL, SAND, S&S	FROM	FT. TO	FT.
FROM	FT. TO	FT. MUD WATER (50+ GPM)	FROM	FT. TO	FT.
FROM	FT. TO	FT.	FROM	FT. TO	FT.
FROM	FT. TO	FT.	FROM	FT. TO	FT.
FROM	FT. TO	FT.	FROM	FT. TO	FT.
FROM	FT. TO	FT.	FROM	FT. TO	FT.
FROM	FT. TO	FT.	FROM	FT. TO	FT.

MISC. INFORMATION:

DRILLER'S NAME Stephen Saper

DAILY DRILLING LOG

S & S DRILLING

HCOI 6761

Palmer, Alaska 99645

(907) 746-0606

OWNER OF LAND CITY of Cold Bay

ADDRESS COLD BAY ALASKA

WELL SITE LABEL # 1

DATE STARTED 10.7.94

DATE ENDED 10.6.94

KIND OF FORMATION:

DEPTH OF WELL 320'

STATIC LEVEL OF WATER FT. 53'

DRAW DOWN FT. 42' AT 35 gpm PER MIN.

GALS PER HOUR TESTED AT 35 gpm PER MIN.

KIND OF CASING 4" STEEL CASING TO 320'

added

FROM 3	FT. TO 3	FT. 1/2 SANDY FILL	FROM	FT. TO	FT.
FROM 3	FT. TO 40	FT. SILTY SANDY GRAVEL	FROM	FT. TO	FT.
FROM 40	FT. TO 50	FT. WET SAND AND GRAVEL	FROM	FT. TO	FT.
FROM 50	FT. TO 90	FT. RUNNING SILTY SAND	FROM	FT. TO	FT.
FROM 90	FT. TO 165	FT. HEAVING SAND & WATER FROM	FROM	FT. TO	FT.
FROM 145	FT. TO 145	FT. SAND GRAVEL & WATER (10 gpm)	FROM	FT. TO	FT.
FROM 185	FT. TO 185	FT. HEAVING SAND GRAVEL FROM	FROM	FT. TO	FT.
FROM	FT. TO	FT. AND WATER	FROM	FT. TO	FT.
FROM 300	FT. TO 312	FT. GRAVEL & WATER (50 gpm)	FROM	FT. TO	FT.
FROM 312	FT. TO 320	FT. TIGHT GRAY GRAVEL & WATER	FROM	FT. TO	FT.
FROM	FT. TO	FT. WATER (50 gpm)	FROM	FT. TO	FT.
FROM	FT. TO	FT.	FROM	FT. TO	FT.

MISC. INFORMATION:

DRILLER'S NAME STEPHEN D. SYREDA

