

DP98000756 – DP98000763

File: DP98

Category 1.20

Document Date: Sep 1, 2000

---

**RCRA RELEASE ASSESSMENT AND CORRECTIVE  
ACTION  
TECHNICAL MEMORANDUM**

**SITE 29 – Elephant Cage Site**

**ELMENDORF AIR FORCE BASE  
ALASKA**

**AFCEE Contract No. F41624-95-D-8004  
Delivery Order 0056  
FXSB007601**

**September 2000**

**DP98000756**

## 1.0 INTRODUCTION

This technical memorandum is prepared in accordance with the requirements of U.S. Air Force Contract Number F41624-95-D-8004, Delivery Order 0056, FXSB007601, for a RCRA release assessment and corrective action site investigation at Elmendorf AFB, Alaska. This summary presents the findings of the field investigation at Site 29 - Elephant Cage Site.

### 1.1 LOCATION AND BACKGROUND

Site 29 - Elephant Cage Site is located at the 381<sup>st</sup> IS on Fairchild Avenue (Figure 1). Approximately 15 drums and containers were identified scattered in the woods north of the Elephant Cage access road extending west from Fairchild Avenue and east of the sewage lagoon access road (Figure 2).

## 2.0 SITE INVESTIGATION

Field investigation activities at Site 29 - Elephant Cage Site consisted of a site reconnaissance, and soil headspace screening. The following sections give more detail about the field investigation activities.

### 2.1 SITE RECONNAISSANCE

The site reconnaissance was conducted on August 28, 2000. 15 assorted drums, paint cans, and containers were observed scattered in the wooded area north of the Elephant Cage access road off of Fairchild Avenue. Photos are in Attachment A - Photo Log. Access to the drum location was by a foot trail approximately 75 feet north east of the juncture at the Elephant Cage access road and the Sewage Lagoon access road (Figure 2). The foot trail extended approximately 50 feet southeast of the Sewage Lagoon access road and into the wooded area south of the antennae field.

The drums were located throughout a section of the wooded area extending approximately 225 feet east from the sewage access road and extending approximately 120 feet south of antennae field. Drum BSI0029-01DR was an empty 55-gallon closed top drum located approximately 20 feet southeast of the entrance point into the wooded area. Drum BSI0029-02DR was an empty 55-gallon closed top

DP98000757

# Site 29 - Elephant Cage Site drum location

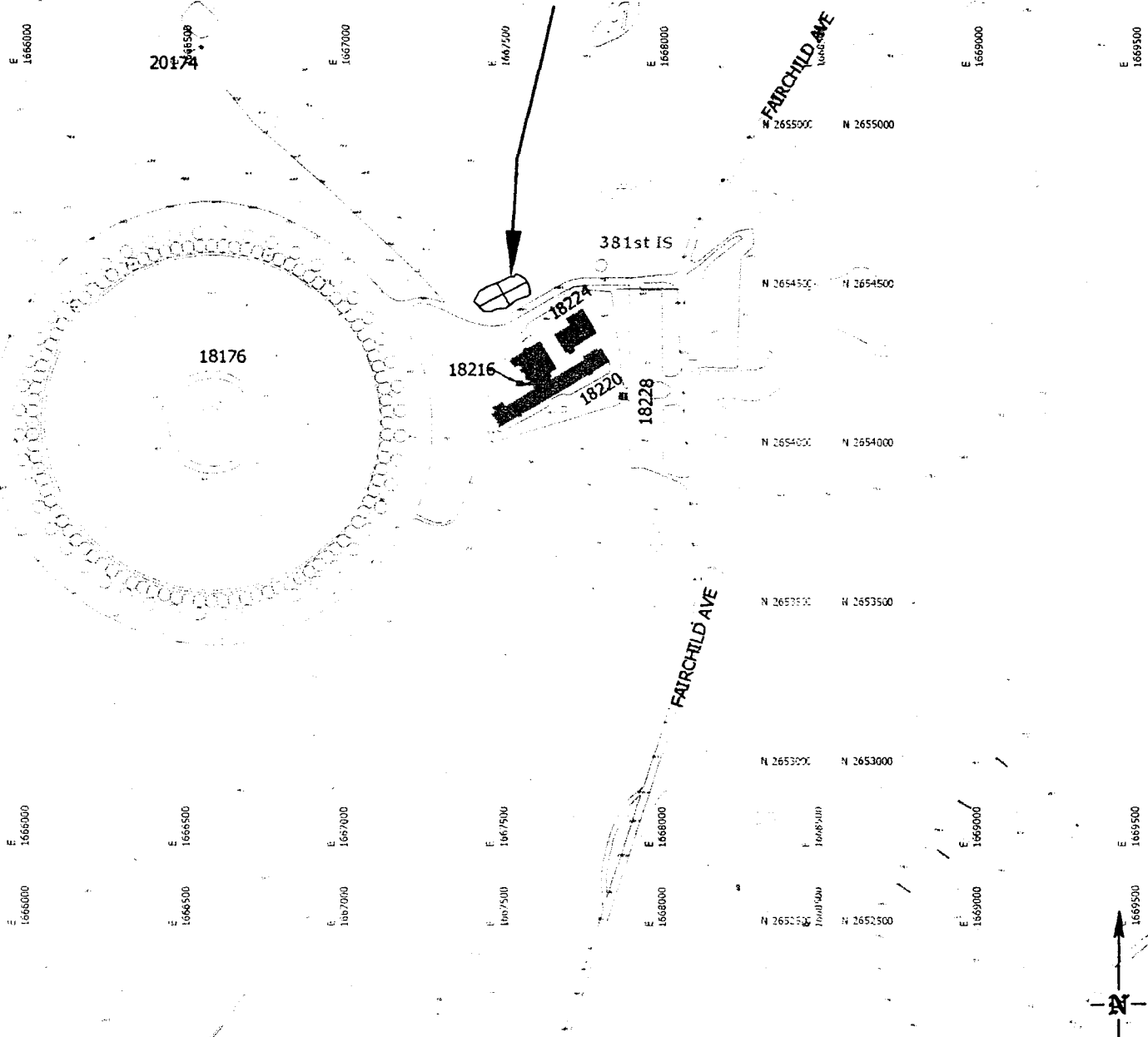


Figure 1 Site 29 - Elephant Cage Site Location Map

ELMENDORF AIR FORCE BASE

DP98000758

DRAWN BY:  
LMW

DATE:  
08-30-00

95-300(PATH)/FILENAME DATE (MM)

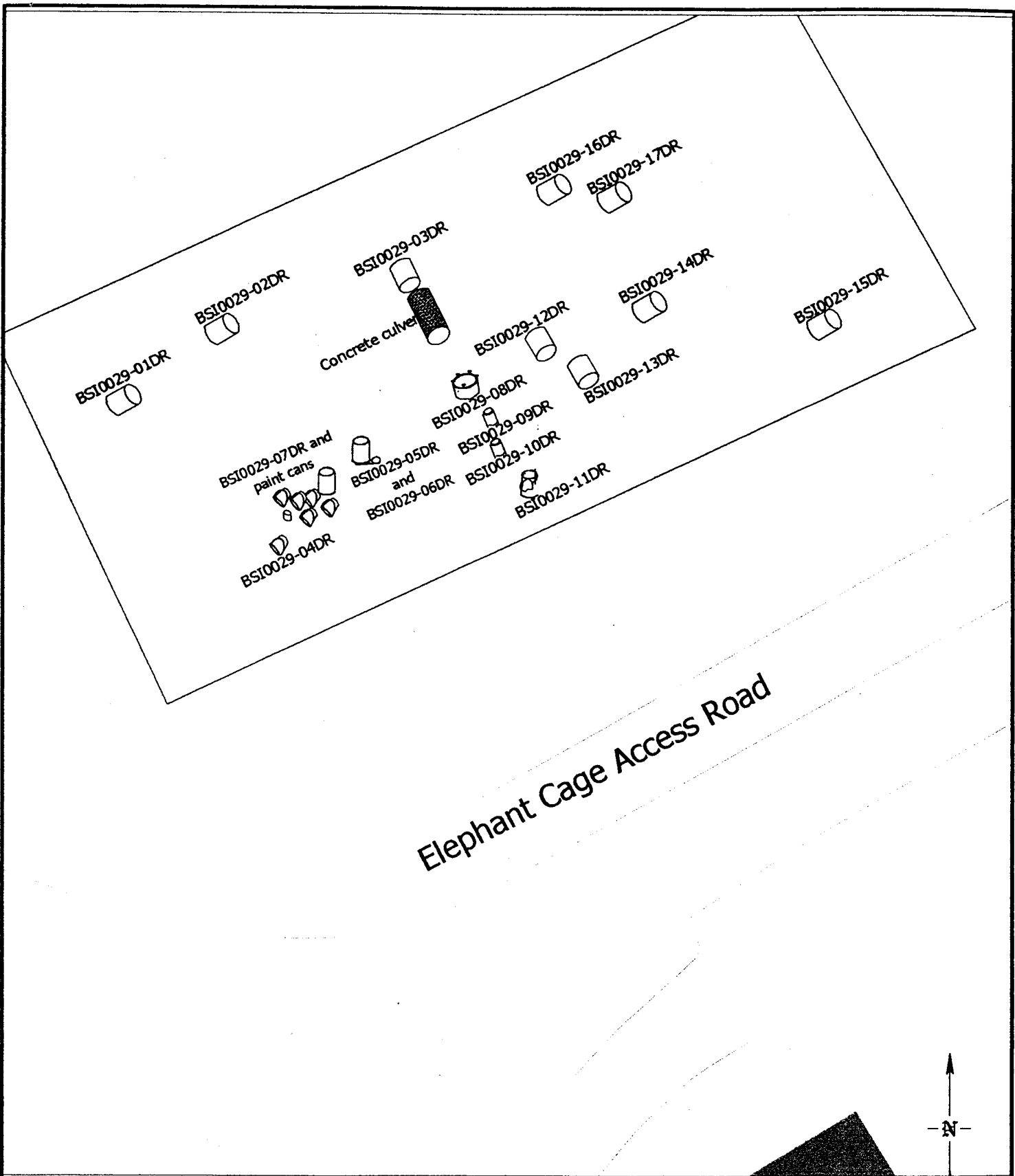


FIGURE 2 Site 29 - Elephant Cage Site Layout Map

DP98000759

ELMENDORF AIR FORCE BASE

DRAWN BY:  
LMW

DATE:  
08-30-00

95-0001747(PLATE) DATE (R2)

drum located approximately 30 feet east of drum BSI0029-01DR. Drum BSI0029-03DR was an estimated 50 feet east of BSI0029-02DR. Drum BSI0029-03DR was a crushed 55-gallon closed top drum with the southernmost end cut away from the drum. The drum appeared to be partially filled with dirt and leaves. Directly north of drum BSI0029-03DR was an empty cement culvert.

Approximately 15 feet north, and between BSI0029-03DR and BSI0029-02DR, was container BSI0029-07DR, a 5-gallon metal container with "Floor Wax" and "Avoid Freezing" on the partially legible label. Directly adjacent to container BSI0029-07DR five 1-gallon paint cans and one coffee can, all containing a thin layer of dried blue material inside. A sixth empty 1-gallon paint can, BSI0029-04DR was located approximately 10 feet south west of BSI0029-07DR. Other than small amounts of dirt and leaves, the five paint cans and the coffee can were empty and did not have lids. BSI0029-05DR and BSI0029-06DR were located approximately 6 feet east of the paint cans. Both containers were empty. BSI0029-06DR was located directly under BSI0029-05DR. Most of container BSI0029-06DR had corroded and fallen apart. Container BSI0029-08DR appeared to part of a machine, no labels or contents were observed and the container had no bottom. BSI0029-09DR was located approximately four feet directly south of BSI0029-08DR and appeared to be a piece of hollow stovepipe.

BSI0029-10DR, a 1-gallon empty paint can without a lid, was located approximately 15 feet south of BSI0029-08, at the beginning of a slight rise. BSI0029-11DR, was located 5 feet south of BSI0029-10DR it was a 5-gallon torn and rusted metal paint can containing approximately 3 inches of a solid material with a layer of mold.

BSI0029-12DR and BSI0029-13DR were parts of what appeared to be two different 55-gallon drums. They were flattened, torn, and consisted of several different pieces spread over a 15-foot area approximately 10 feet east of BSI0029-08DR and BSI0029-09DR. Drum BSI0029-14DR was an empty 55-gallon closed top drum labeled Fort Richardson Dry Cleaning Solvent "SD" and was located an estimated 15 feet east of BSI0029-12DR and BSI0029-13DR.

DF98000760

Drum BSI0029-15DR was a 55-gallon drum located approximately 100 feet south east of BSI0029-14DR. The drum was upside down and partially buried in dirt and roots near the top of the ridge.

## **2.2 FIELD SCREENING AND SAMPLING**

Field screening and sampling was conducted on August 29, 2000. Two empty 55-gallon drums, BSI0029-16DR and BSI0029-17DR, were found in addition to the 15 drums located on August 28, 2000. BSI0029-16DR was 55-gallon RCRA empty open top drum containing a small amount of residue similar in appearance to latex adhesive.

Reconnaissance and investigation of a ridged area extending east-west approximately 50 feet north of the Elephant Cage access road (Figure 2) indicates that the area may have been used as a building debris dump site. Corroded metal, paint chips, crumbled tile, broken cement blocks, "2 by 4's" and other assorted building debris was buried in the "ridged" area. Assorted rebar, sheet metal, cable spools and pieces of discarded machinery and rubbish were found sticking out of the surface throughout the wooded area. Research was conducted at the Elmendorf History Office and at the Corps of Engineer map vault. The area where the ridge is now located was not vegetated and no buildings can be seen in aerial photos from 1968.

The site was further investigated for possible drums or containers by prodding other mounds with a shovel. No other drums or containers were located during the investigation at Site 29 - Elephant Cage Site.

Soil headspace screening samples were collected beneath drums and containers and placed in Ziplock™ bags. The soils were allowed to warm for a minimum of 15 minutes under the heater in the field vehicle. Soils were field screened with a PID. The results of soils screening are in Table 1.

DP98000761

Table 1: Drum Screening Results

Drum	Headspace Reading (ppm)
BSI0028-01DR	0.3
BSI0028-02DR	0.1
BSI0028-03DR	0.1
BSI0028-04DR	0.1
BSI0028-05DR	0.0
BSI0028-06DR	0.0
BSI0028-07DR	0.1
BSI0028-08DR	0.1
BSI0028-09DR	0.0
BSI0028-10DR	0.0
BSI0028-11DR	0.2
BSI0028-12DR	0.0
BSI0028-13DR	0.0
BSI0028-14DR	0.2
BSI0028-15DR	0.0
BSI0028-16DR	0.0
BSI0028-17DR	0.0

ppm = parts per million

No headspace screenings were collected beneath BSI0029-08DR and BSI0029-09DR, these two items were building debris, not containers, PID results were less than 1 ppm, and no evidence of contamination was observed. BSI0029-12DR and BSI0029-13DR consisted of several flattened and torn pieces of two or more 55-gallon drums. No headspace screening was collected from the soil beneath these pieces due to drum PID results of 0 ppm for each of the pieces. No evidence of contamination was observed in the soils beneath the pieces of the drums. No soil samples were collected for laboratory analysis.

DP98000762

### **3.0 SUMMARY AND RECOMMENDATIONS**

The field investigation at Site 29 - Elephant Cage Site indicates that no contamination of the soil is present. Headspace screening samples collected from beneath the drums were below 10 ppm, and no visual evidence of contamination was observed. Based on the results of this investigation, no further action is recommended at Site 29 - Elephant Cage Site.

### **4.0 REFERENCES**

United States Air Force (USAF), 2000, Draft RCRA Release Assessment and Corrective Action Work Plan, July.

DP98000763